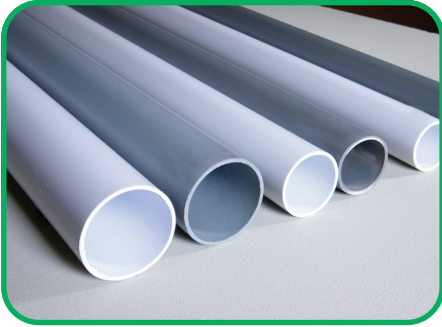


Step by step installation guide - 32/40/50mm ABS Solvent Weld



WARNING

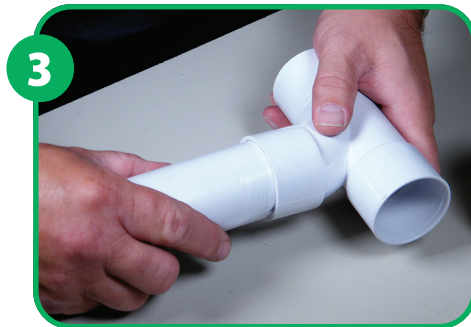
Ensure you purchase the correct pipe for your chosen system.



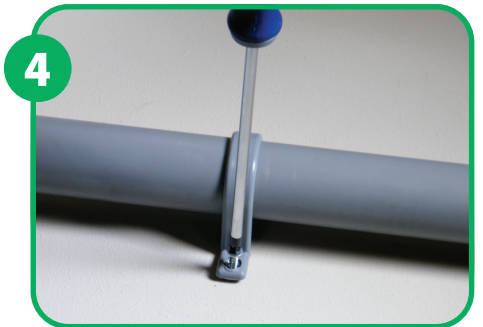
1 Measure and cut the pipe to size.



2 Apply solvent cement to the outside of the pipe and inside of the socket. Leave for 2 or 3 seconds for the cement to work on the plastic.



3 In one swift movement, push the pipe into the socket. Allow 5 minutes for the solvent to bond before handling.



4 All pipes must be supported both vertically and horizontally.

Pipework support (BS EN 12056:2000) Maximum distances for support

Pipe Size	Vertical	Horizontal
32mm	1.2m	0.5m
40mm	1.2m	0.5m
50mm	1.2m	0.6m



Roofline, Window and Cladding Systems



Rainwater Systems



Soil & Waste Systems



Underground Drainage Systems



MDPE Systems



Hot & Cold Plumbing Systems