

Use this sheet to help draw out the shape and fixed contents of your kitchen or bathroom. Be sure to measure in cm or mm.

You may find it helpful to write the dimensions in the notes section below as a sort of key for the drawing or explain any parts of the drawing such as any sloped ceilings.

Notes:



Door

B

Boiler



Electrical Sockets

W

Water Stop Tap



Fuse box



Window



Radiator/
Towel Rail

S

Sink

G

Gas Mains

W

Waste Pipe

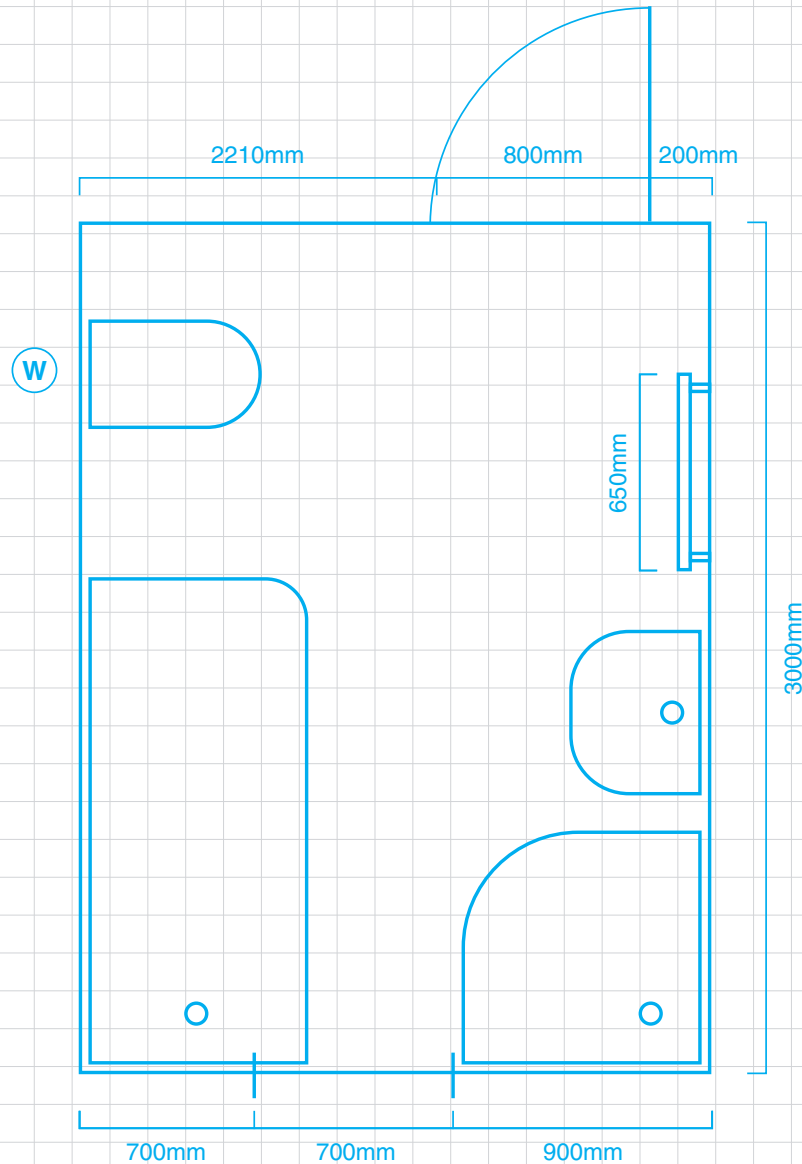
Here's an example of a completed floor plan for a bathroom



Checklist

Have you made a note of where these are?

- Radiators
- Pipes
- Vents
- Switches
- Plug points
- Power outlets
- Drains
- Water and gas supplies



Ceiling height: 2400mm
Window sill height: 1050mm

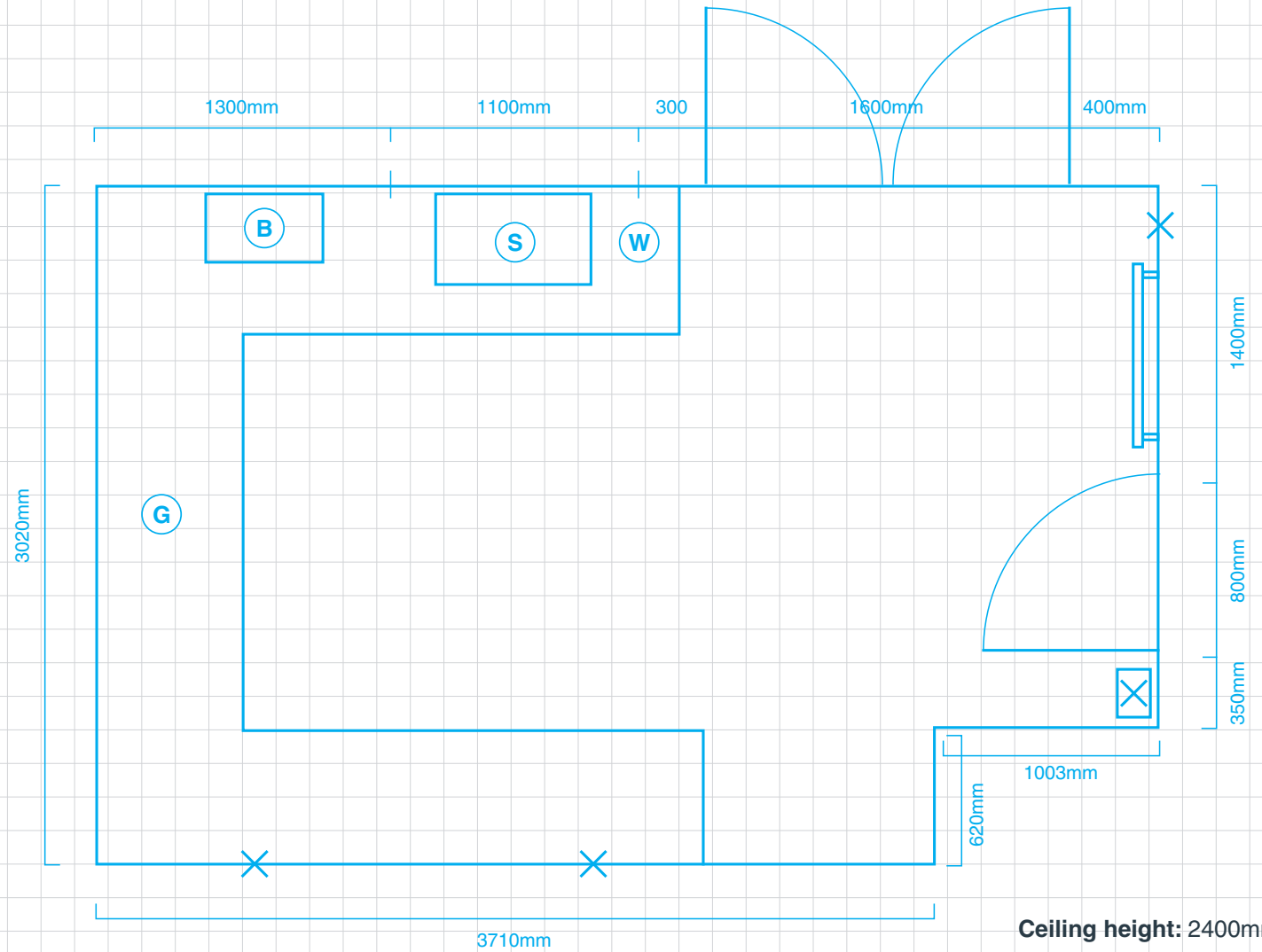
Here's an example of a completed floor plan for a kitchen



Checklist

Have you made a note of where these are?

- Radiators
- Pipes
- Vents
- Switches
- Plug points
- Power outlets
- Drains
- Water and gas supplies



Ceiling height: 2400mm
Window sill height: 1050mm