



# AQUAPANEL® Cement Board Indoor Masonry installation

TECHNICAL LEAFLET

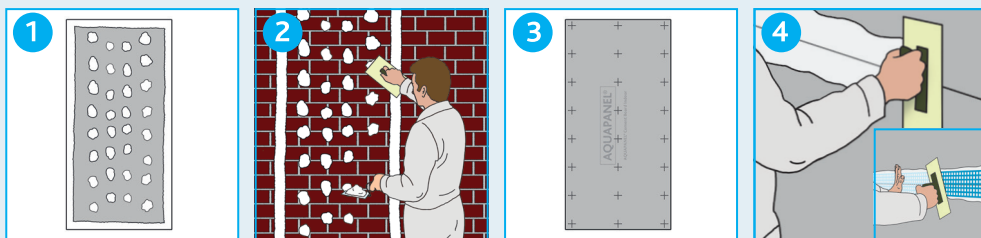
Be certain,  
choose **AQUAPANEL®**

**AQUAPANEL®**

# AQUAPANEL® Cement Board Indoor Masonry installation



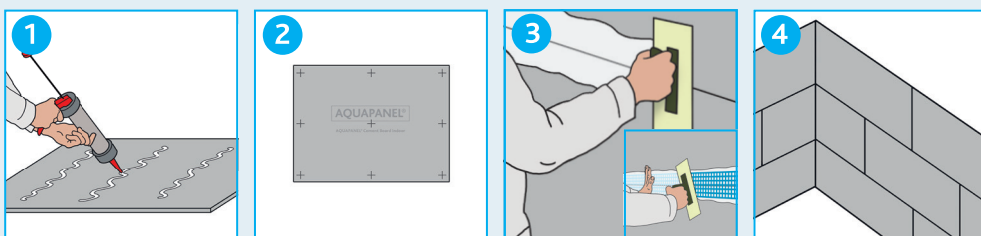
## Adhesive dab method



## AQUAPANEL® Cement Board Indoor

Designed for excellent performance in wet areas, AQUAPANEL® Cement Board Indoor has always met high expectations. Manufactured from inorganic materials and highly resistant to water, the board delivers exceptional stability in the most challenging wet conditions.

## Gluing method using adhesive



## MASONRY INSTALLATION

### Preparing the substrate

The substrate must be clean, dry, free of dust and frost. You must ensure sufficient bearing capacity – loose parts, old paints and pollutants must be removed. If using the adhesive dab method, the maximum allowable unevenness of your substrate is 20mm. If you want to use the cartridge adhesive method the maximum evenness tolerance is 5mm.

### Wall cladding

If a direct application to the wall using adhesive dabs or gluing isn't possible – because the surface is too uneven or old plaster that should not be removed, or to create space for thermal or sound insulation – AQUAPANEL® Cement Board Indoor can be fixed by using a treated timber or metal substructure.

### Adhesive dab method

This method is for fixing large format AQUAPANEL® Cement Board Indoor panels vertically and to full room height without horizontal joints, by using flexible tile adhesive and dowels.

- The boards should be 15 mm short of the floor and ceiling - cut or install as necessary.
  - Wipe down the backside of the board to remove dust.
- 1 Apply a 50 – 75mm wide tile adhesive band around the board edge. Then apply dabs on the surface of AQUAPANEL® Cement Board Indoor. Aside the board edges closer than the middle.

- 2 Alternatively you can apply the band and dabs directly to the wall. To do this you need to mark the wall, for example with a chalk line, along the board edges.
  - Board cut-offs should be used as packing strips against which to rest the bottom edge of the board.
  - Position the reverse side of the board against the wall.
  - Tap along the board sides and surface firmly until the board is aligned and levelled.
  - Repeat the process with the next board and leaving 3 to 5 mm gap between all board joints.
- 3 When the adhesive begins to dry (after 1 - 2 hours), you should fasten the AQUAPANEL® Cement Board Indoor with 9 stainless steel screws per m<sup>2</sup> (min. 6x70mm) along the edges and the middle using wall plugs. For this purpose you should pre-drill the board before setting the dowels. Ensure these are embedded by at least 50mm into the wall. Ensure the wall plug has a collar so it can't slip through the board while fastening. Be cautious and do not overdrive fasteners!
- 4 Fill the board joints with tile adhesive and embed the AQUAPANEL® Tape (10cm).
  - As soon as the boards are completely fixed, you can remove the board cut-off packing strips from the bottom edges of your board.

### Gluing method using cartridge adhesive

This method is used for fixing small size AQUAPANEL® Cement Board Indoor panels (1200 x 900mm) horizontally to masonry using a high strength gap-filling cartridge adhesive.

- Wipe down the backside of the Aquapanel board to remove dust.
- 1 Place 3 vertical 10-12mm beads of high-strength, single part, gap-filling adhesive down the back of AQUAPANEL® Cement Board Indoor panel.
    - Press the board firmly against the wall until it is levelled and correctly positioned.
  - 2 Fasten the board with 9 stainless steel screws (countersunk head screws, min. 6x60mm) per m<sup>2</sup> into wall plugs with collar. For this purpose you should pre-drill the boards before setting the dowels. Screws should remain 100mm from the top and bottom edges and 50mm from the left and right edges. Ensure these are embedded by at least 50mm into the wall. Be cautious and do not overdrive fasteners.
  - 3 Fill the board joints with tile adhesive and embed AQUAPANEL® Tape (10cm).
  - 4 While continuing the board installation, avoid cross-joints!

\* All fixings by others.