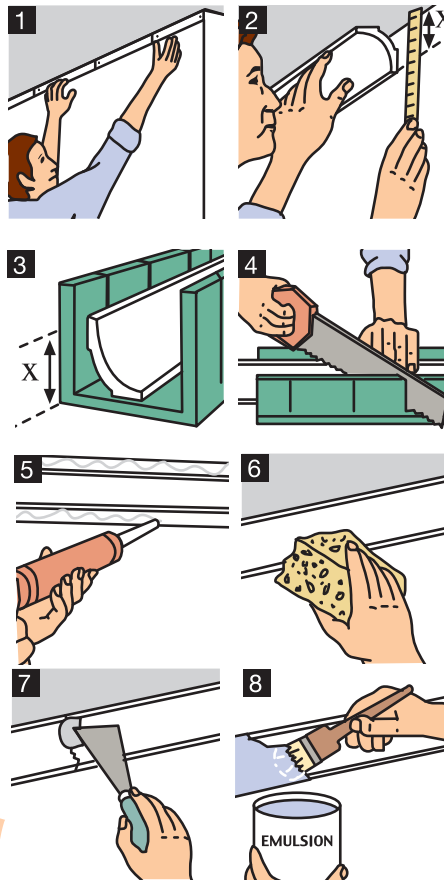


# HOW TO...

## *install coving*



### PREPARATION

- 1 Cut a small piece of coving and line up between the wall and ceiling.
- 2 Mark the top and bottom of the coving and repeat at regular interval around the room. Join up the marks with a straight line, taking into consideration the variations of the ceiling.

Clean the area between the drawn lines, ensuring that the surfaces are dry and free from any loose plaster or wallpaper. If the surfaces are painted or sealed apply a coating of PVA adhesive and leave to dry. This will ensure that the coving has a secure base to bond to.

- 3 Cut the coving ends so that they will slot together. For any corners or other 90 degree angles use pre cut Internal and External Corners.
- 4 For all other angles you should use a variable mitre box.

### INSTALLATION

- 5 Apply a 5mm wide, wavy line of Solvent Free Adhesive to the bonding surfaces of the coving.
- 6 Starting in a corner, simply place coving between previously drawn lines and gently press into place. Remove any excess adhesive from the wall and ceiling using a spatula and damp sponge.

Install the next coving length in the same manner and continue around the room. NB - Ensure that you place a line of adhesive on the ends to affix to the previous length.

- 7 Any gaps and butt joints should be filled with adhesive and the excess wiped away.

**WARNING**  
Do not use solvent based adhesives

### DECORATION

Allow to dry for a minimum of 24 hours before decoration

- 8 The coving is pre-primed, if required, it may be painted with a good quality emulsion paint  
Do not use solvent based paints

### What you will need:

- Ruler
- Pencil
- Saw
- Mitre block
- Solvent free instant adhesive
- Scraper
- Cleaning sponge
- Emulsion paint (if needed)

*Top Tip*  
Always measure  
and cut all the  
pieces first!