



P89 60mm Backset Deadlocking Nightlatch Fitting Instructions

Tools Required



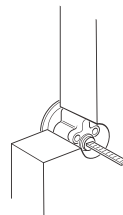
1. At the height you want your lock, use a pencil to mark a spot exactly 60mm from the edge of the door. At that spot, drill a 32mm diameter hole through the door.
2. With the key removed, insert the cylinder through the brass ring and place it in the hole. Hold the mounting plate against the inside of the door. If necessary, use a fine-toothed hacksaw to shorten the flat connecting bar so that it projects 12mm beyond the surface of the mounting plate.
3. With the key removed, replace the cylinder in the door ensuring that the Yale logo is uppermost and, from the inside, secure the backplate to the cylinder using the two flat headed connecting screws supplied. (Step 3)

For doors less than 45mm thick, the connecting screws may need to be shortened to ensure that they can be tightened against the backplate.

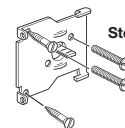
4. Secure the cylinder to the mounting plate using the flat-ended connecting screws provided, inserted through the top pair of holes in the centre of the mounting plate. For doors less than 45mm thick, you will need to shorten the connecting screws to make sure that they fit tight onto the mounting plate.
5. Secure the mounting plate to the door with two woodscrews supplied. Make sure that the projection on the front of the mounting plate is 1.5mm from the edge of the door.
6. Use the button on the front of the lock case to latch back the lock in the open position. Align the arrow on the back of the case with the arrow on the rotatable slot. Place the lock case over the mounting plate, making sure that the flat connecting bar is inside the slot on the lock case.
7. Push the lock case down firmly onto the mounting plate. Then slide the lock case sideward to its final position, flush with the edge of the door. Secure the lock case to the mounting plate with the two small screws supplied.
8. Close the door and, using the lock case as a guide, mark the position of the remaining component – the 'staple' – on the door frame. Chisel out a recess in the door frame to hold the staple flush with the frame and fix it with the screws provided.

The fitting of your new Yale lock is now complete and guaranteed for 2 years.

NOTE: A reverse turn of the key from the outside deadlocks the handle inside, so it won't turn even if a thief smashes glass to reach it.



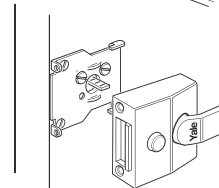
Step 2a



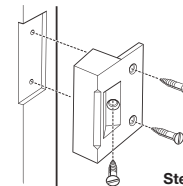
Step 3 & 4



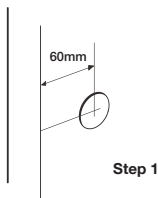
Detail



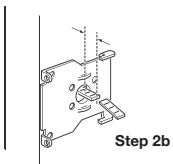
Step 5



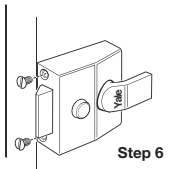
Step 7b



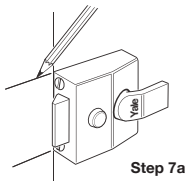
Step 1



Step 2b



Step 6



Step 7a

CAUTION:

This lock is not designed for use with outward opening doors.
Do not attempt to modify it.

DOOR THICKNESS: This lock is suitable for doors up to 57mm thick or 54mm where a doorpull is fitted.

CARE OF YOUR CYLINDER RIM LOCK: Never take your cylinder apart. Never oil or paint the cylinder. To lubricate, use a Teflon based solution.

LOCK: Moving parts may be greased.

FOR MAXIMUM SECURITY:

The gap between the lock body and the 'staple' should be kept to a minimum and must never exceed 5mm.



The world's favourite lock since 1843

School Street, Willenhall, West Midlands WV13 3PW
www.yale.co.uk Tel: +44 (0) 1902 364647 E-mail: info@yale.co.uk

Issue No: 01-2012

