

PEDESTAL INSTALLATION (OPTIONAL)

Please note that fixing kit and installation instructions below are just an example. Parts shown must be purchased separately should you decide to affix pedestal to floor.

Please read these instructions prior to installation

These instructions must be carried out in order.

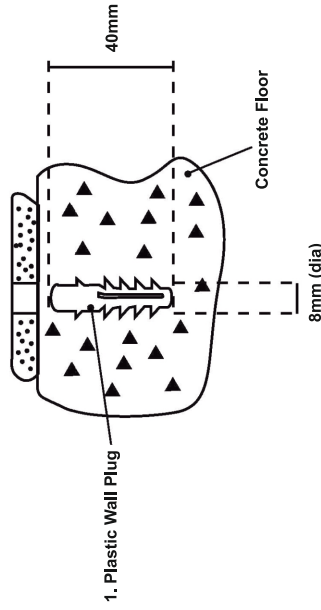
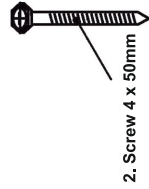
The use of a residual current device (RCD) or cordless drill is recommended. Always double-check the position and your measurements before drilling holes. Protective eye wear should be used when drilling and handling sanitary ware.

Fixing Tip: A piece of insulating tape or a couple of layers of masking tape applied to the wall before marking out the fixing holes will help stop the drill from wandering on tiled surfaces.

- 1) Use this checklist to ensure all parts are accounted for and not damaged. Under no circumstances should this product be installed if any of the parts are damaged or missing. In the unlikely case that there are any installation issues please contact your nearest store.

Item	Description	Qty
1	Plastic Wall Plug	2
2	Screws 4 x 50mm	2

CAUTION - TAKE GREAT CARE WHEN DRILLING FLOORS TO AVOID WIRES AND PIPES WHICH MAY RUN BENEATH



- 2) The Pedestal must be installed onto a flat surface.
- 3) Position Pedestal in its installed place and mark the floor through the holes in the Pedestal.
- 4) If installing on a concrete floor, drill 2 x 8mm holes approximately 40mm deep. If installing on a wooden floor, drill 2 x 4mm pilot holes approximately 30mm deep.
- 5) If installing the Pedestal onto a wooden floor go to line 6. If installing on a concrete floor push the plastic Plug (1) into the holes to be flush with the floor surface.
- 6) Pull Screw (2) through the Pedestal holes into the Wall Plug (1)

Caution: Do not over tighten, as this may damage the ceramic.

ATTACHING THE BASIN TO THE WALL

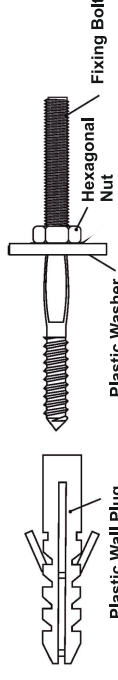
Please read these instructions prior to installation

These instructions must be carried out in order.

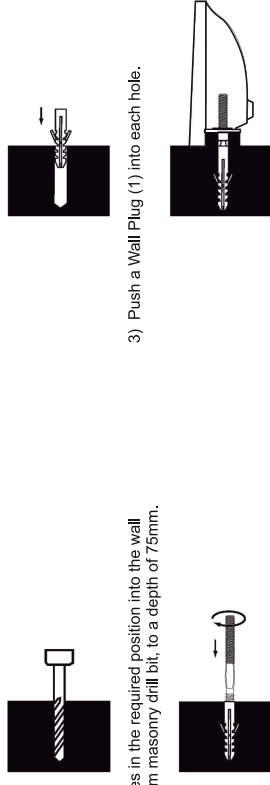
- 1) Use this checklist to ensure all parts are accounted for and not damaged. Under no circumstances should this product be installed if any of the parts are damaged or missing. In the unlikely case that there are any installation issues please contact your nearest store.

Item	Description	Qty
1	Plastic Wall Plug	2
2	Fixing Bolt	2
3	Plastic Washer	2
4	Hexagonal Nut	2

CAUTION - TAKE GREAT CARE WHEN DRILLING WALLS TO AVOID WIRES AND PIPES WHICH MAY RUN BENEATH



Note: Due to continuous product development fixing kit may differ from the one shown above. These fixings are suitable for solid walls only. Plasterboard or stud walls may require specialised fixings (not supplied).



- 2) Drill two holes in the required position into the wall using a 14mm masonry drill bit, to a depth of 75mm.
- 3) Push a Wall Plug (1) into each hole.
- 4) Screw a Fixing Bolt (2) into each Wall Plug (1) using an 8mm spanner around the centre of the Fixing Bolt (2) until the spanner comes into contact with the wall.
- 5) Place the basin in position against the wall, putting the Fixing Bolts (2) through the holes in the rear of the basin. Push a Plastic Washer (3) and Hexagonal Nut(4) onto each Fixing Bolt (2) and secure the basin.



Caution: Do not over tighten as this may damage the ceramic.

We have taken great care to ensure that this product reaches you in perfect condition. However should any parts be damaged or missing please contact your point of purchase. This does not affect your statutory rights. In addition if you require replacement parts your point of purchase will be happy to assist.

BASIN AND PEDESTAL

INSTRUCTION MANUAL

TOOLS REQUIRED (but not supplied)

Spanner

Cordless Drill

Silicone Sealant

Spirit Level

Please note: Product shown is for illustration purposes only.
*This does not affect your statutory rights.
Terms & Conditions Apply.