

AD1030## L-Shaped Telescopic Rod

Before drilling, check for hidden cables or pipes. The use of a residual current device (RCD) is recommended when working with power tools.

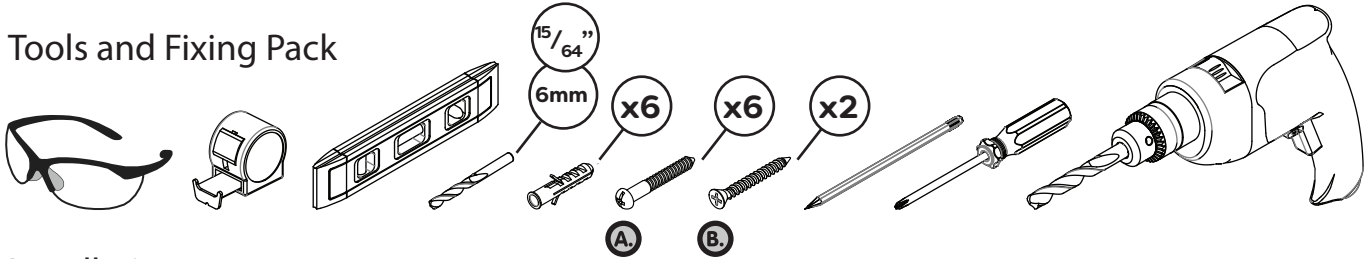
If the product is to be fitted on a ceramic tiled wall, a ceramic drill bit should be used. Always ensure that the drill hole passes through the central tiled area rather than the grouted area. To prevent damage to the tile, mask the area around the hole with tape before drilling.

Clean surfaces with a damp cloth and wipe dry using a soft cloth. Do not use detergents or abrasive cleaners as these may damage the surface of the fitting.

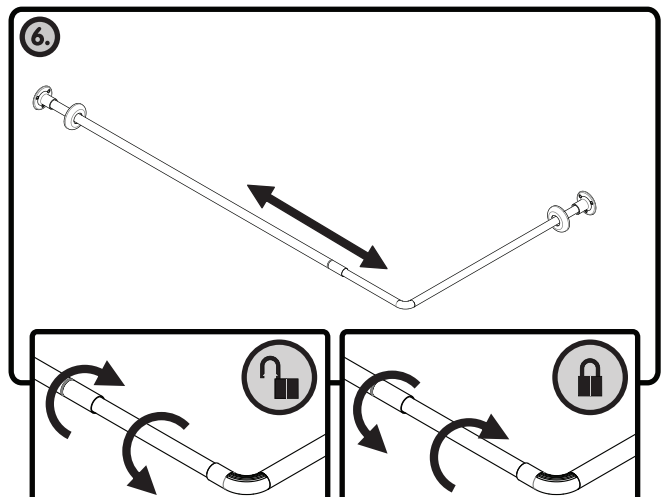
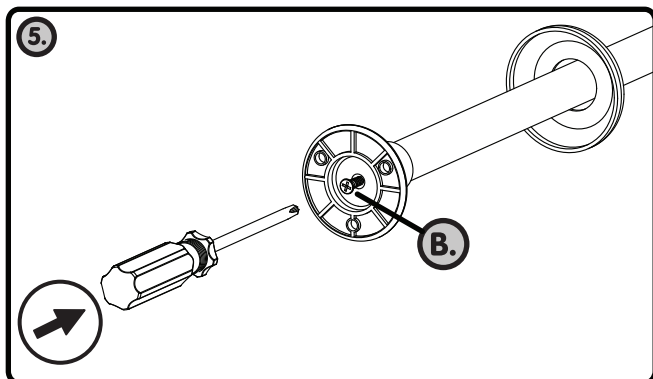
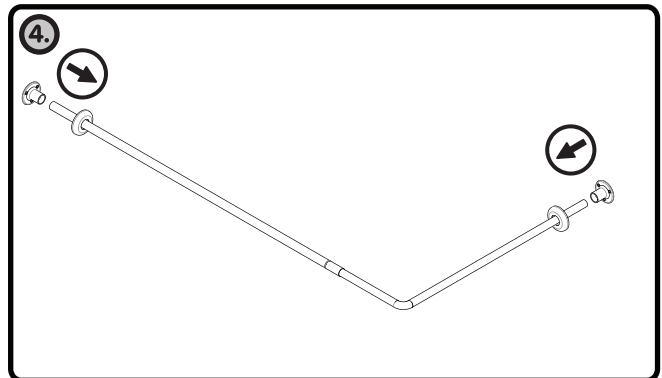
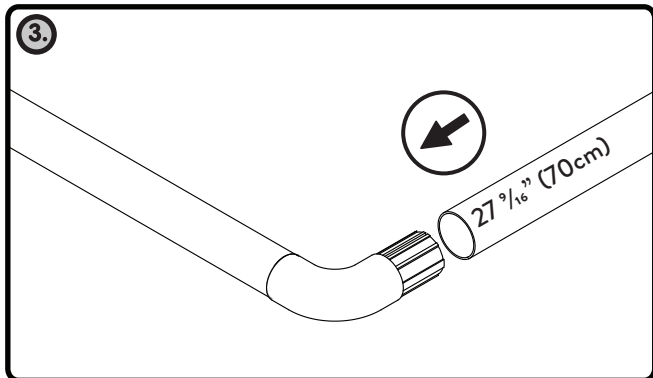
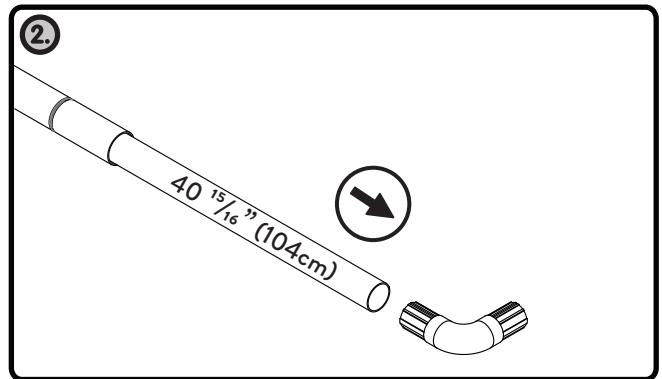
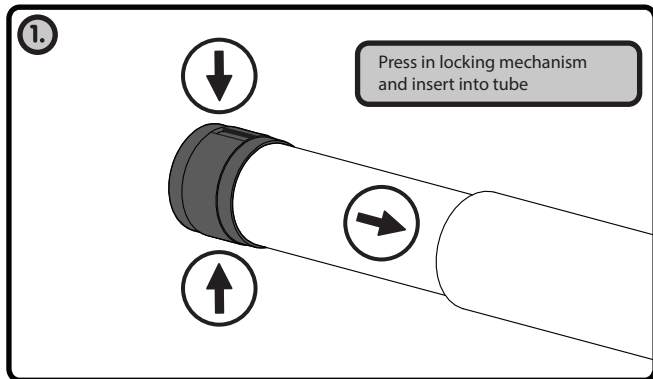
Rod Components

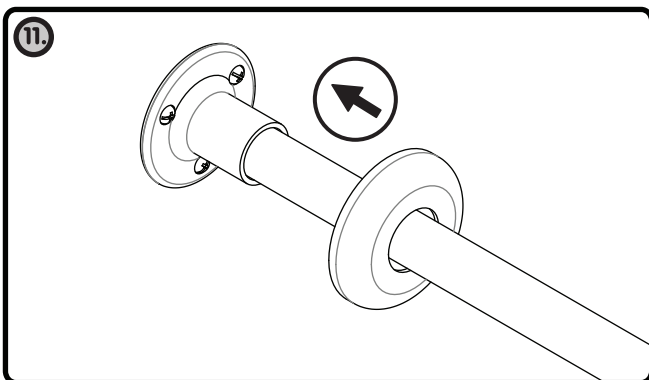
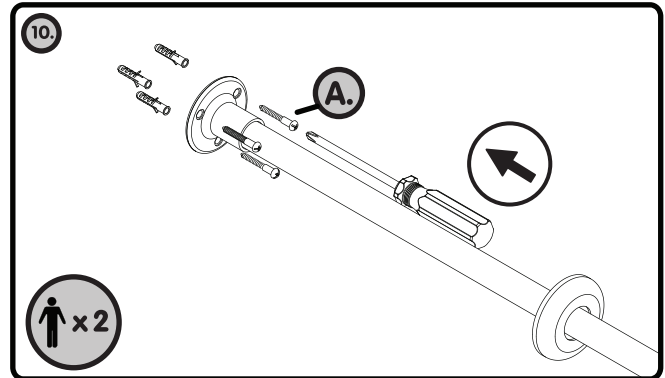
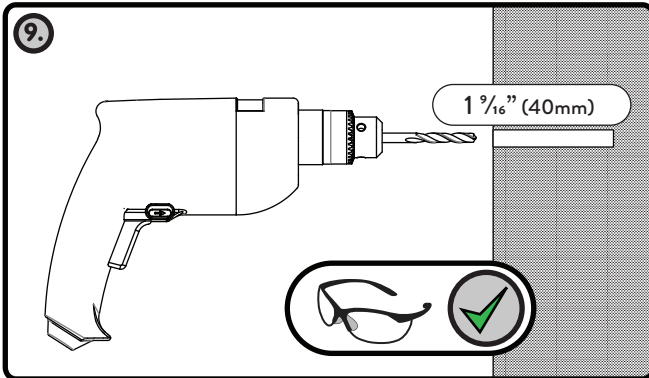
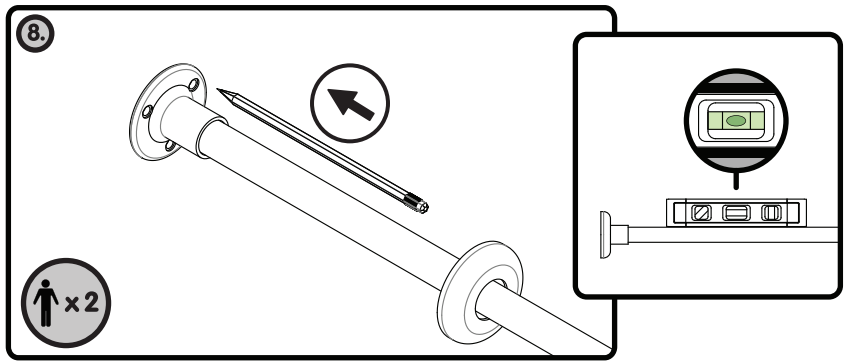
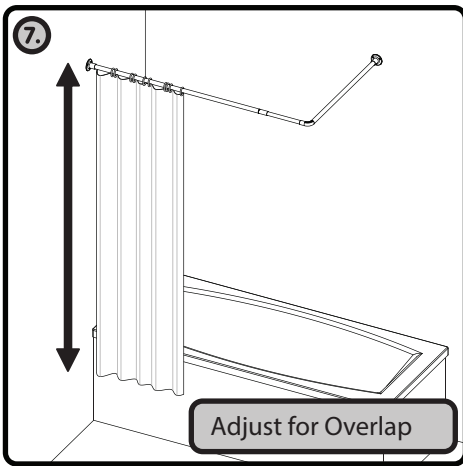
Telescopic Rod Assembly, 27 9/16" (70cm) Tube, Elbow Joint x 1, Wall Bracket x 2, Wall Bracket Cover x 2,

Tools and Fixing Pack



Installation





DO NOT OVERTIGHTEN 5.5lb (2.5Kg) MAX

UK: Croydex, Central Way, Andover, Hampshire, SP10 5AW, UK

EU: MIL, Unit 8 Purcellsinch Ind Est, Dublin Road, Kilkenny, R95 HP71, Ireland

Tel: +44 (0)1264 365881

Email: info@croydex.co.uk

www.croydex.com

R&R 045 R04