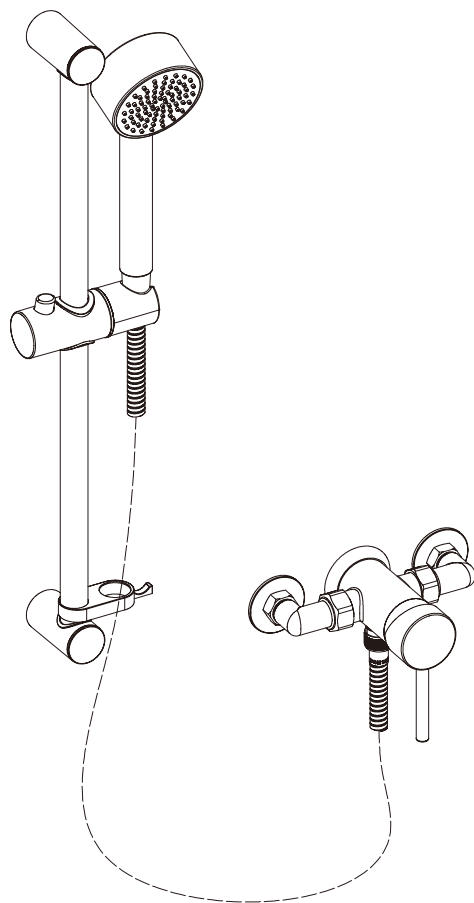


Manual Mixer Shower

Fitting instructions

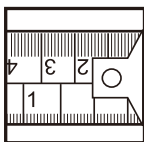
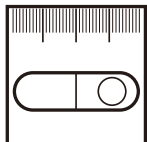
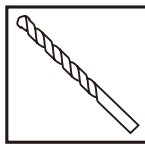
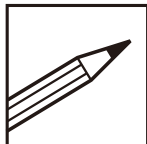


**Please note: Tap head shown is for illustration purposes only.
Please keep these instructions for future reference and request of replacement parts.**

We have taken great care to ensure that this product reaches you in perfect condition. However should any parts be damaged or missing please contact your point of purchase. This does not affect your statutory rights. In addition if you require replacement parts your point of purchase will be happy to assist.

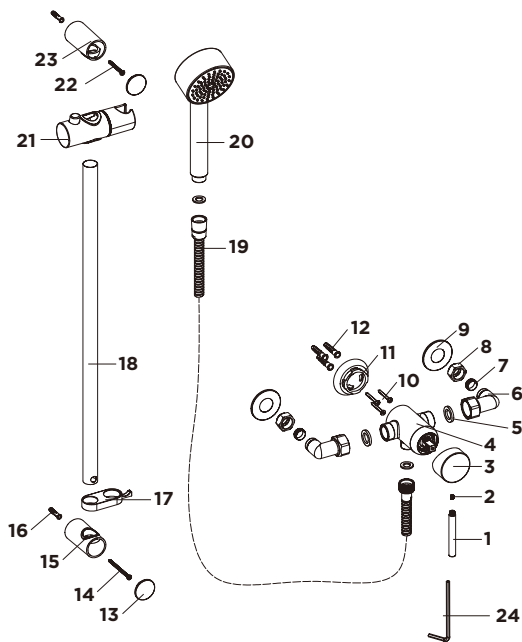
Contents	Page
1. Tools Required	3
2. Parts Supplied	3
3. Before You Start	4
4. Specification	4
5. Installation	5-8
6. Aftercare	8

Tools Required (Tools not supplied)



Parts Supplied

NO.	Descriptions	Qty
1	Lever	1
2	Grub screw	1
3	Handle seat	1
4	Mixer body	1
5	Sealing washer	2
6	Elbows	2
7	Copper olive	2
8	Fixing nuts	2
9	Flange	2
10	Wall screws	3
11	Mounting bracket	1
12	Wall plugs	3
13	Cap	2
14	Long wall screw	1
15	Lower riser rail bracket	1
16	Wall plugs	2
17	Hose retainer	1
18	Riser rail	1
19	Shower hose	1
20	Handset	1
21	Slider	1
22	Short wall screw	1
23	Upper riser rail bracket	1
24	Allen key	1



Before You Start

Hot water should be stored and distributed at a temperature of not less than 60°C which will help minimise the build-up of limescale.

For further details contact your Local Water Authority.

This shower should be installed in compliance with the Water Regulations.

(a) Identify all components and check pack contents.

(b) Turn off water mains supply.

Specification:

Operating Pressure:

Minimum: 0.2 Bar

Maximum: 5.0 Bar

Hot Water Supply- Max 75 °c

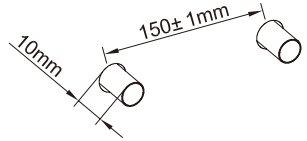
Recommended 60-65 °c

Operating pressures on both hot and cold lines should be as even as possible in order to ensure the maximum efficiency of the mixer.

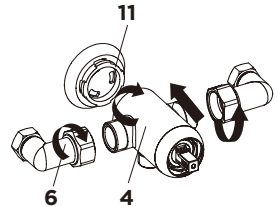
Installation

-Fitting the mixer shower

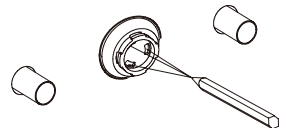
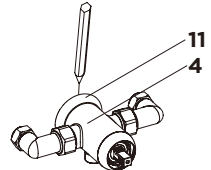
1. Flush pipe work prior to installation to remove debris from the system.
2. Turn off water supply following system flushing.
3. Prepare hot and cold inlet pipes (15mm) with centres 150mm apart, cold supply to the right. For water inlet pipes, leave a minimum of 10mm exposed.



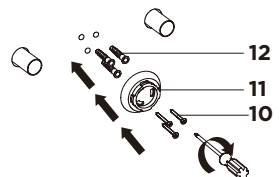
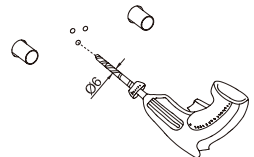
4. The valve will normally ship with the water outlet to the bottom and the cold inlet to the right (indicated by a blue dot).
5. Fit elbows(6) with sealing washer loosely to the mixer body(4). Fit mounting bracket(11) to mixer body.



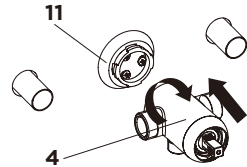
6. Place mixer body against the wall with elbows over the pipe tails and mark around the mounting bracket where it sits on the wall. Remove mixer body, place mounting bracket in centre of the outlined bracket position and mark points for fixing holes.
7. Remove the elbows from the mixer body.



8. Important - Use appropriate fixings suitable for wall type/construction. Drill holes to suit required fixings (Use wall plugs[12] supplied if suitable).
9. Secure mounting bracket to the wall using the wall screws[10] supplied (if suitable), but not fully tighten.



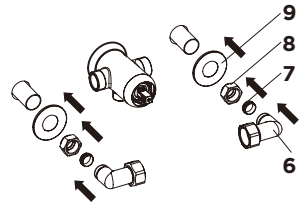
10. Push mixer body(4) onto the mounting bracket(11) and twist to engage lugs. It may require some manoeuvring to ensure vertical alignment of the mixer body(4).



Note: if you need to readjust the position of the mounting bracket, follow these steps:

Remove mixer body(4) from mounting bracket(11) and realign as marked. Then tighten screws holding mounting bracket(11) and refit mixer body.

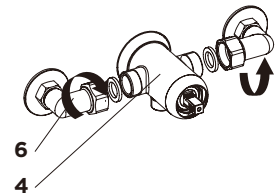
11. Fit flange(9) to inlet pipe ends, secure elbows(6) to inlet pipe ends using fixing nuts(8) and copper olive(7), but do not tighten for this step.



12. Connect elbows(6) to mixer body, ensure that the sealing washer is fitted in the nuts.

13. Tighten all the nuts.

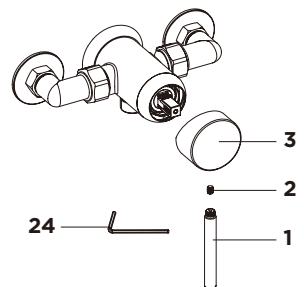
14. Turn on the water supplies and check for leaks.



15. Unscrew the grub screw(2) from the handle seat(3).

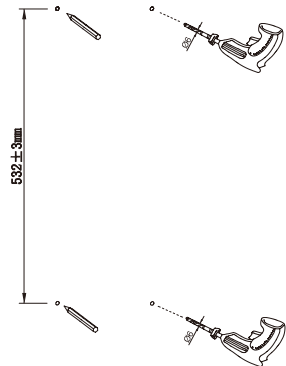
Place the handle seat(3) onto the cartridge, to check that it moves freely left and right. When satisfied, tighten the grub screw(2) using an allen key(24).

16. Refit lever(1) to handle seat(3).

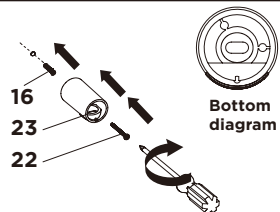


-Fitting the Shower Kit

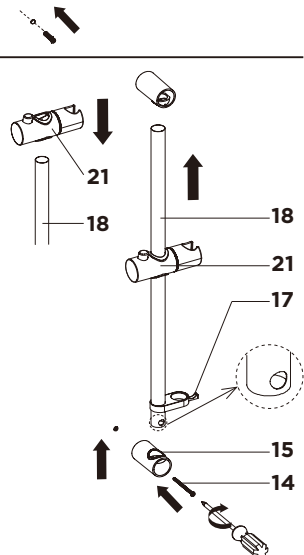
1. Mark and drill 2 holes (the centre of two holes are $532\pm 3\text{mm}$) on the wall, ensure that the shower hose(19) will not be over extended when the slider(21) is in its highest position.



2. Once holes are drilled , insert wall plugs(16) to wall.
3. Fit upper riser rail bracket(23) to the wall using the short wall screw(22).



4. Press the button of the slider and push it to the riser rail(18).
5. Fit hose retainer(17) to riser rail(18), then fit lower riser rail bracket(15) to riser rail(18).
Note: The large hole in the riser rail must be facing forward the installer.
6. Fit this assembly to upper riser rail bracket(21) through the hole of the upper riser rail bracket.
Tighten the lower riser rail bracket(15) using the long wall screws(14).



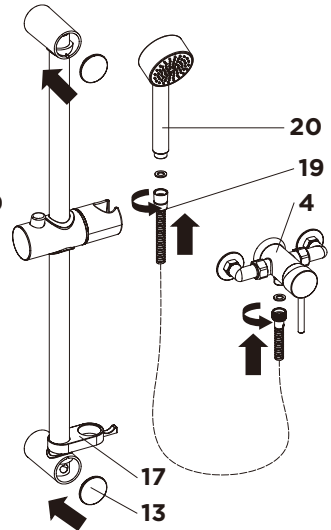
7. Fit cap(13) to the riser rail brackets.

8. Insert hose seal to cone end provided in pack and connect to handset(20) and tighten.

DO NOT OVER TIGHTEN.

Insert second seal into opposite end of shower hose(20) and connect to outlet of the mixer valve(4) through the hose retainer(17).

DO NOT OVER TIGHTEN.



Aftercare

Cleaning the cartridge (if water dripping from tap)

Before carrying out any maintenance, turn off the mains water supply. If you are unsure contact a qualified plumber.

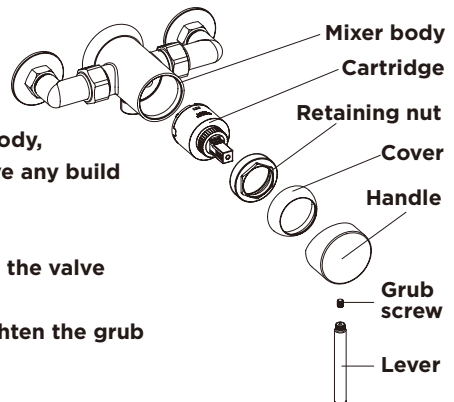
Remove the lever, grub screw, handle and cover.

Remove the retaining nut using a suitable spanner, pull the cartridge from the mixer body, clean thoroughly under cold water to remove any build up of limescale or debris.

If necessary replace the cartridge.

Replace the cartridge into the body, tighten the valve using a suitable spanner.

Replace retaining nut, cover and handle, tighten the grub screw and re-fit lever to handle.



General cleaning

Whilst modern plating techniques are used in the manufacture of these fittings, the plating will wear if not cleaned properly. The safest way to clean your product is to wipe with a soft damp cloth. Stains can be removed using washing up liquid.

All cleaning powders and liquids will damage the surface of your fitting even the non-scratch cleaners.