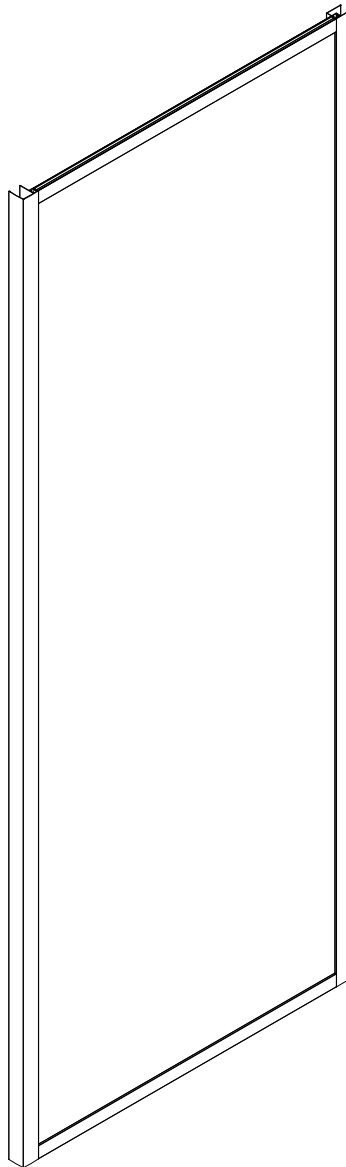


Installation Instructions

Side panel

161392

Side Panel shown in Right Hand fitment.
For Left Hand fitment - please mirror the
installation process.



Important Note on Safety Glass

In order to comply with European Regulatory Requirements, all of our shower enclosures/bath screens undergo a thermal toughening process.

This process makes the glass significantly stronger compared to standard glass, however in the unlikely event the glass should break during use, the glass in its entirety will shatter into small manageable fragments, the intention of this ensures avoiding large dangerously sharp shards of glass

Important - Please Read

- Important: The wall plugs included in this pack are for solid walls only. If the product is to be mounted on a partition or stud wall, specialised fixings should be purchased separately-your local building merchant should be able to ensure you have the correct fixings for intended wall type.
- CAUTION!
Before drilling into any walls check that there are no hidden cables or pipes. Exercise great care when using power tools near water. The use of a residual current device (RCD) or cordless drill is recommended. Always double check the positioning and measurements before drilling holes.
- This product is heavy and requires two people during lifting and installation.
- Glass is delicate, support on cardboard to minimise the risk of damage.

Product Information

- 161392 Side panel =760mm adjustment ⇒725-745mm

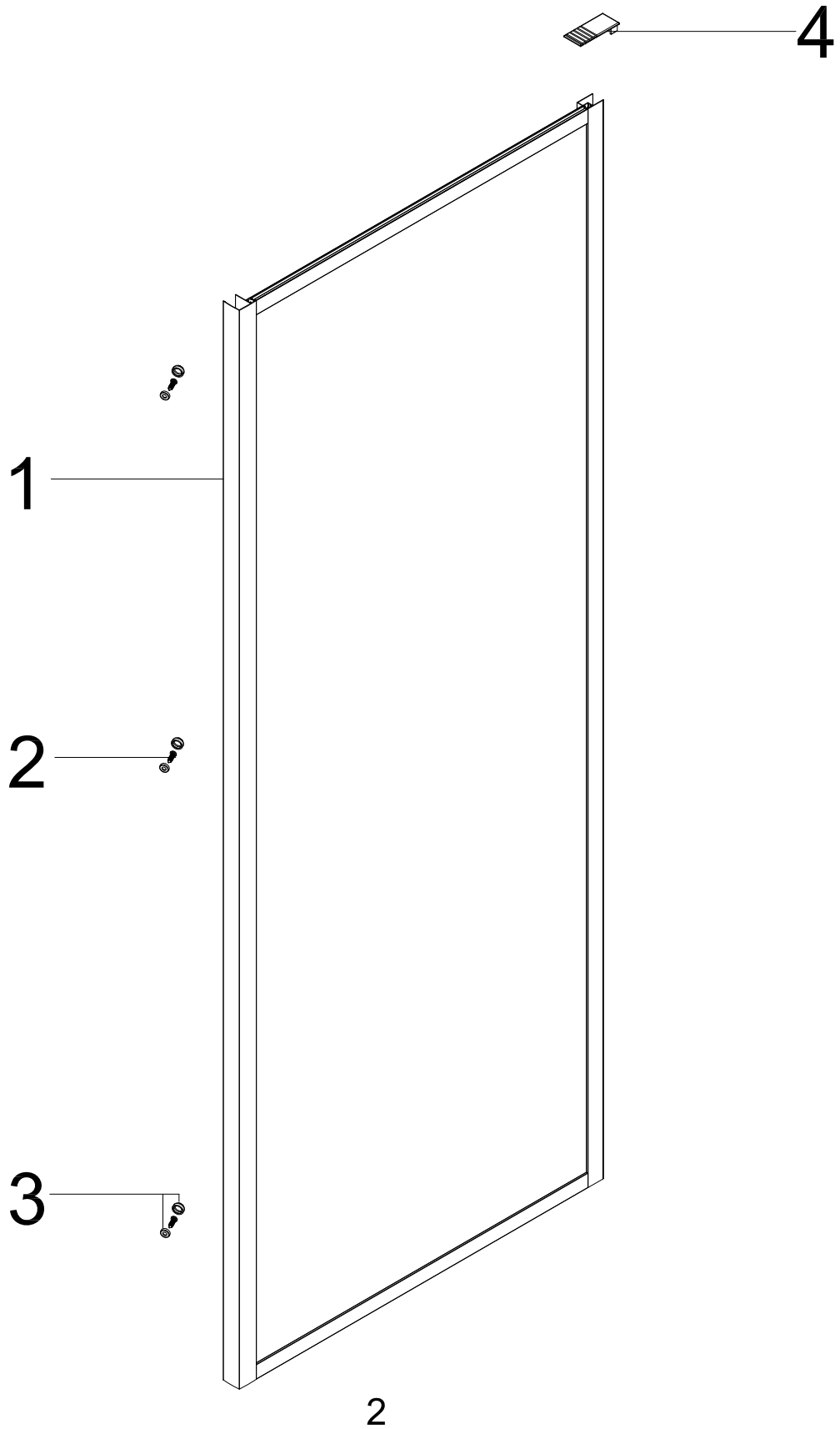
Installation Tips

- Fixing tips; A piece of insulating tape or a couple of layers of masking tape applied to the wall before marking out the fixing holes will help stop the drill from wandering, particularly on tiled surfaces.
- When working near a basin or bath insert the plug into the waste, this will help you avoid losing small parts. Also take care not to drop accessories or tools onto the bath or basin, use a towel or bathmat to protect delicate surfaces.
- Do not fix the wall profile to newly plastered,painted or papered walls as chemical reaction may cause discolouration to surface finish.
- Check that the tray has been installed to the manufacturer's instructions.
Please note-All product is supplied without a tray.
- Ensure that a silicone-based bathroom sealant is used to prevent any leaks.


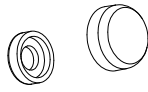

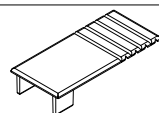
Legal statement

- We have taken great care to ensure that this product reaches you in perfect condition. However should any parts be damaged or missing please contact your point of purchase. This does not affect your statutory rights. In addition if you require replacement parts your point of purchase will be happy to assist.

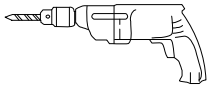

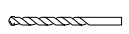
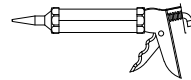
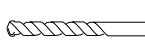

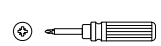

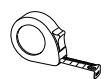
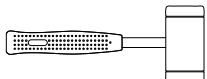
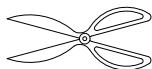


IDENTIFICATION OF PARTS



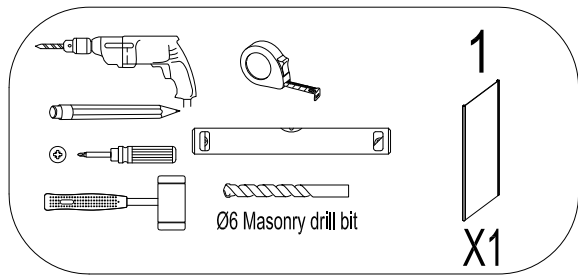
Fixings & fittings supplied

Item No.:	Part	Quantity	Item No.:	Part	Quantity
1	 Side Panel	x1	3	 Screw cover caps	x3
2	 ST3.5X10 Profile Screws	x3	4	 Profile cover	x1

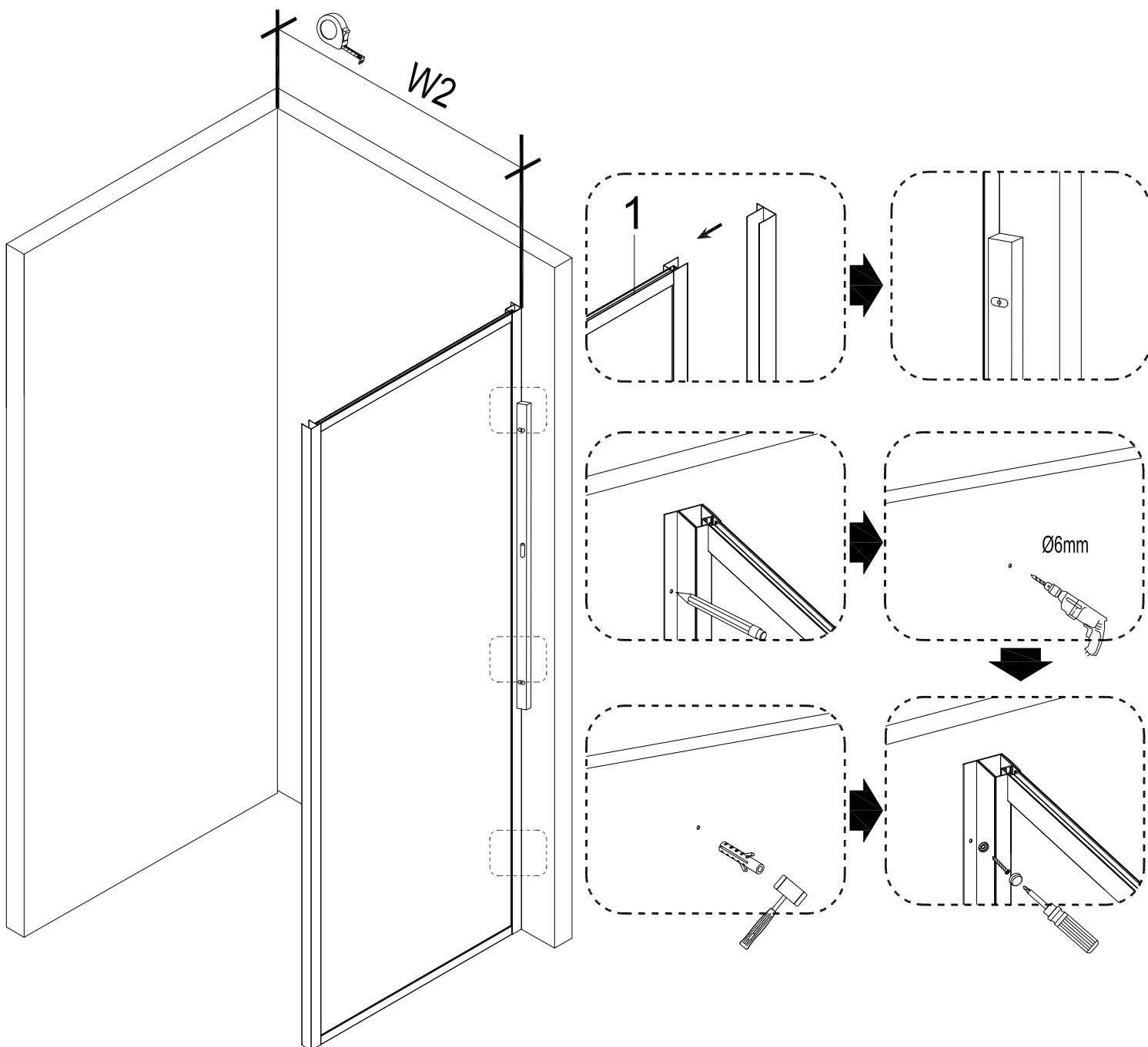
Tools required(not supplied)

Electric Drill		pencil	
Ø3 HSS drill bit		Silicone sealant gun	
Ø6Masonry drill bit		Silicone sealant	
Cross-Head screwdriver		Spirit level	
Tape Measure		Rubber mallet	
Scissors		Gloves	
Eye Protection			

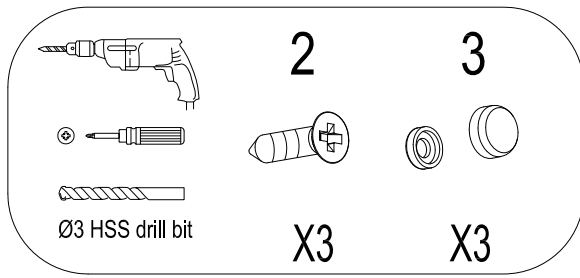
① ASSEMBLY INSTRUCTIONS



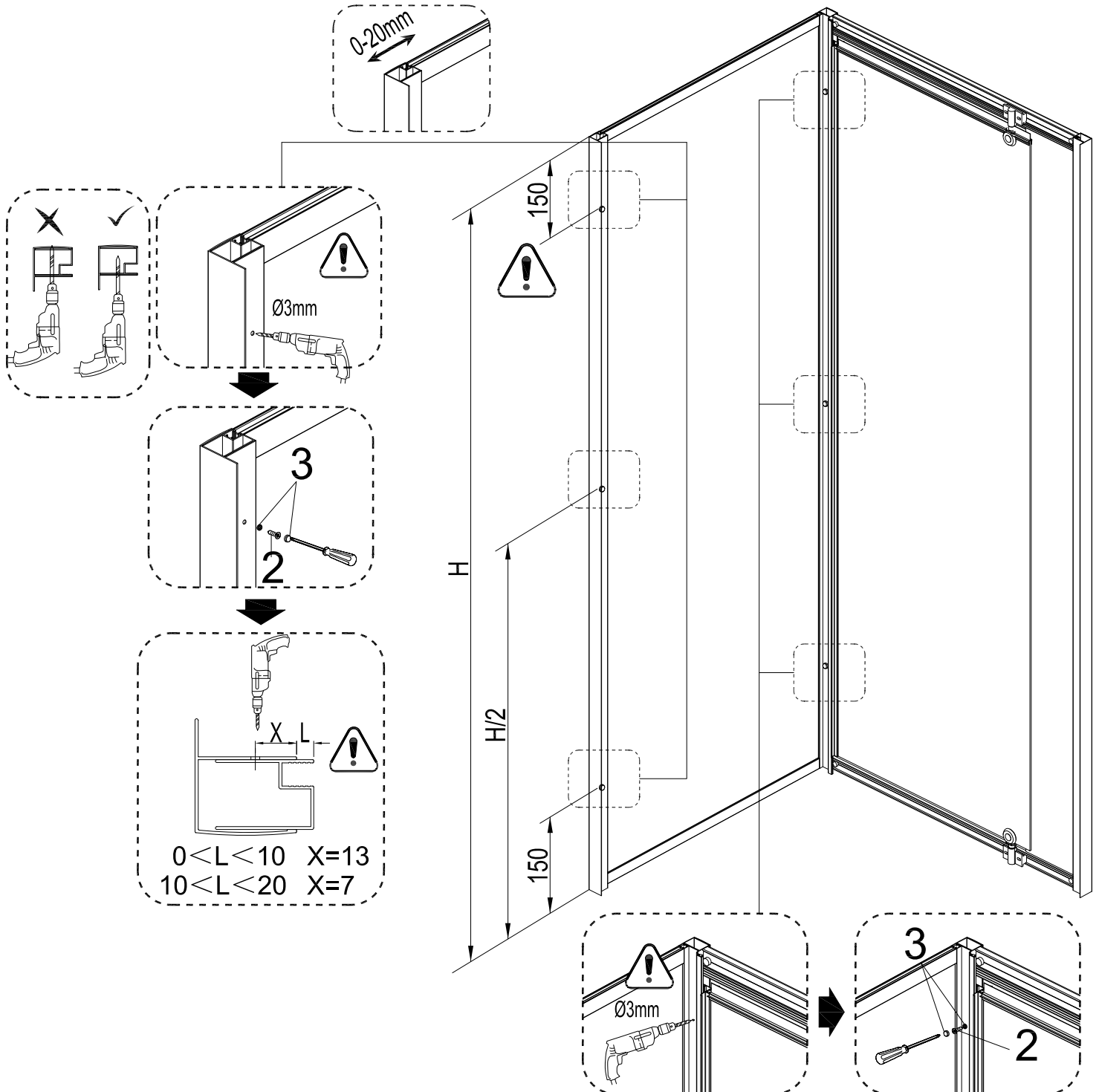
- Insert wall profile onto frame(1)
- Position wall profile with spirit level to ensure the W2 size same with the width of matching shower doors.
- Using a pencil to mark the positions of the pre-drilled fixing holes on the wall profile against the wall.
- Drill the marked holes using a 6mm masonry drill bit.
- Using rubber hammer to Install supplied wall plugs.
- Using screws and caps to fix wall profile against the wall.
- Note:the wall profile、 wall plugs、 screws and caps are included in the package of matching shower doors.



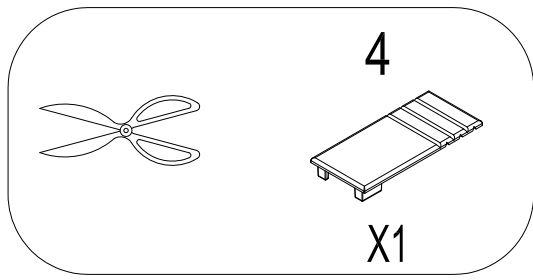
② ASSEMBLY INSTRUCTIONS



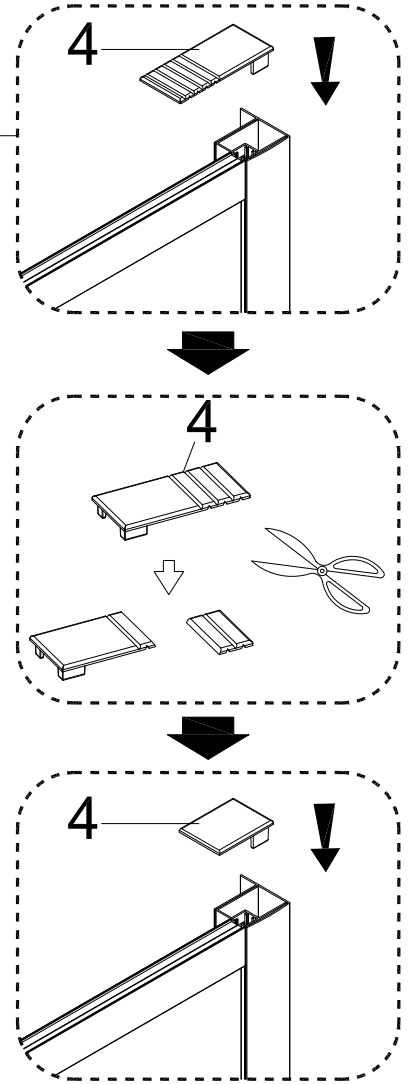
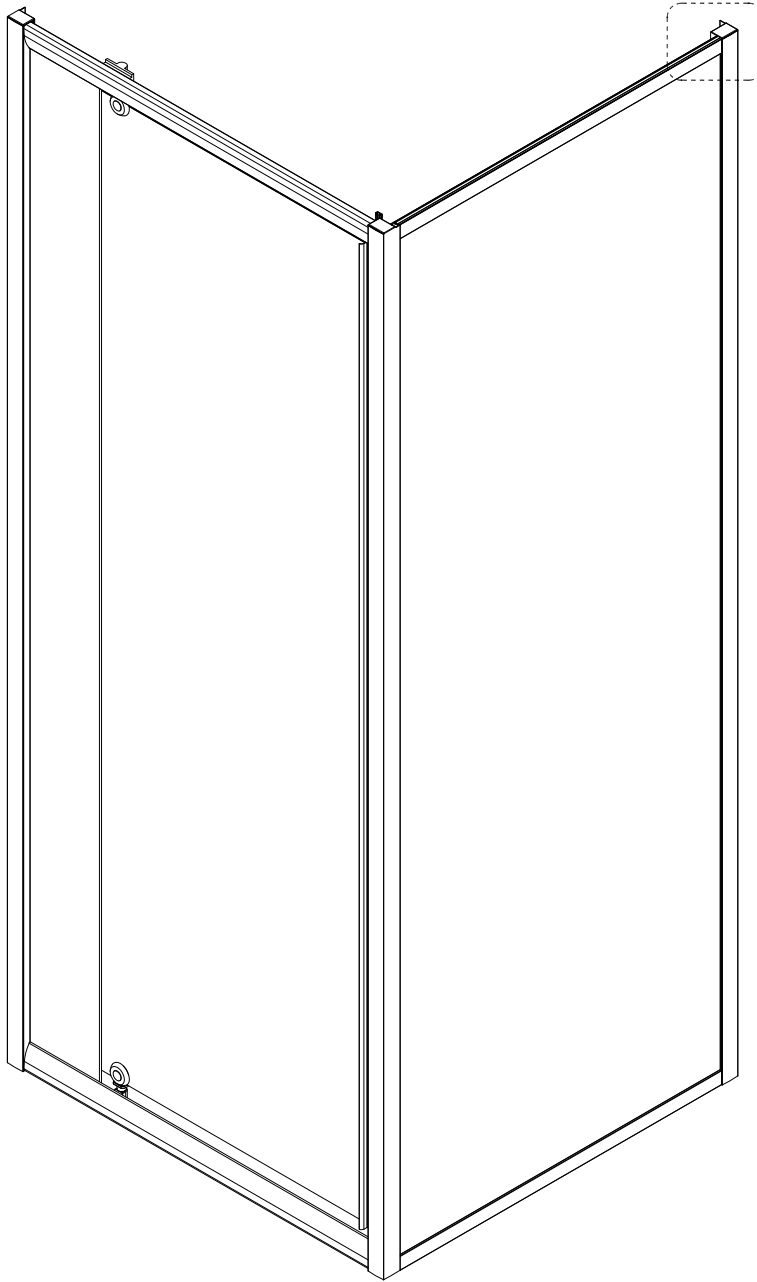
- There is 20mm of adjustment on the wall profile, allowing for the square positioning of the frame (1) .
- Once positioned, using a 3mm HSS drill bit to drill holes (referring to the mark on the picture below) on the wall profiles . **CAREFUL**-Do not drill all the way through the wall profile only enough to insert the screws(2)
- Using screws(2) and cap (3) to fix the frame (1) to the wall profile, and also using screws and caps to fix the frame (1) onto the matching shower doors.



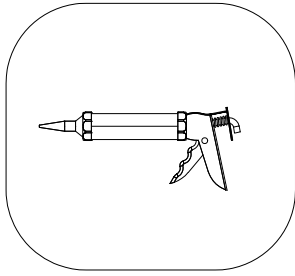
③ ASSEMBLY INSTRUCTIONS



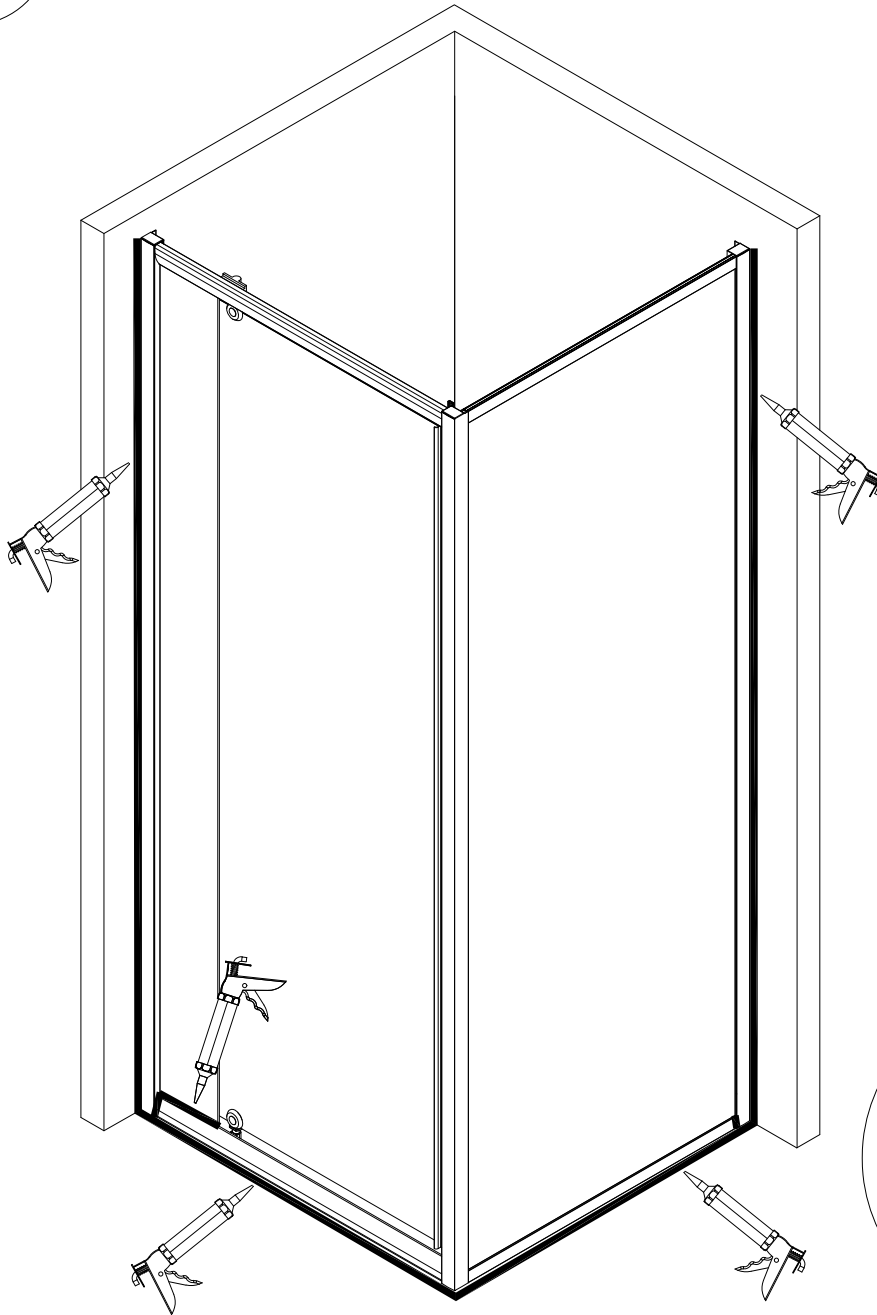
-Using a scissor to cut reasonable size of the profile cover cap (4) to fix on the top of wall profile.



④ ASSEMBLY INSTRUCTIONS



- Apply silicone sealant to the outside of the shower doors.
- Please note: Do not apply silicone sealant to the inside of the shower doors.



CLEANING -general

Use only warm soapy water and damp cloth/sponge on a regular basis. Do not use abrasive scouring powders, chemicals or aerosol cleaners-these may result in damage to the surfaces, in particular, the plated component parts.

sealant drying times may vary in cold damp conditions and will be extended where thicker beads of sealant are applied. Allow sealant to dry completely before exposing to water.

We have taken great care to ensure that this product reaches you in perfect condition. However should any parts be damaged or missing please contact your point of purchase. This does not affect your statutory rights. In addition if you require replacement parts your point of purchase will be happy to assist.