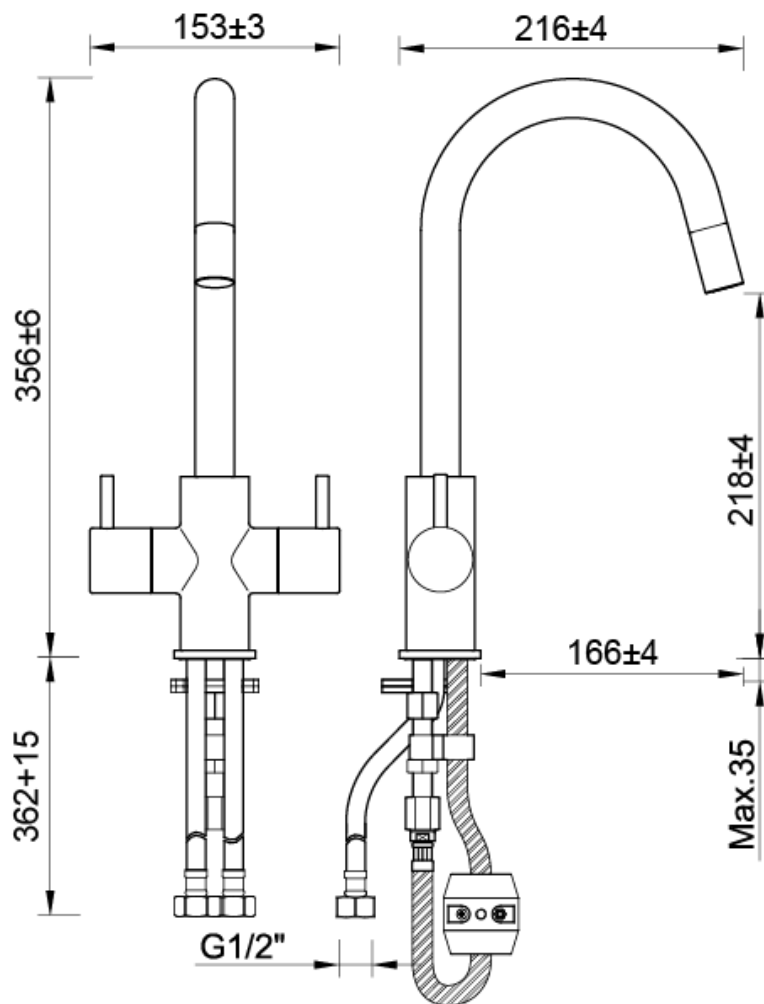


170099 - Kisdon Mono mixer

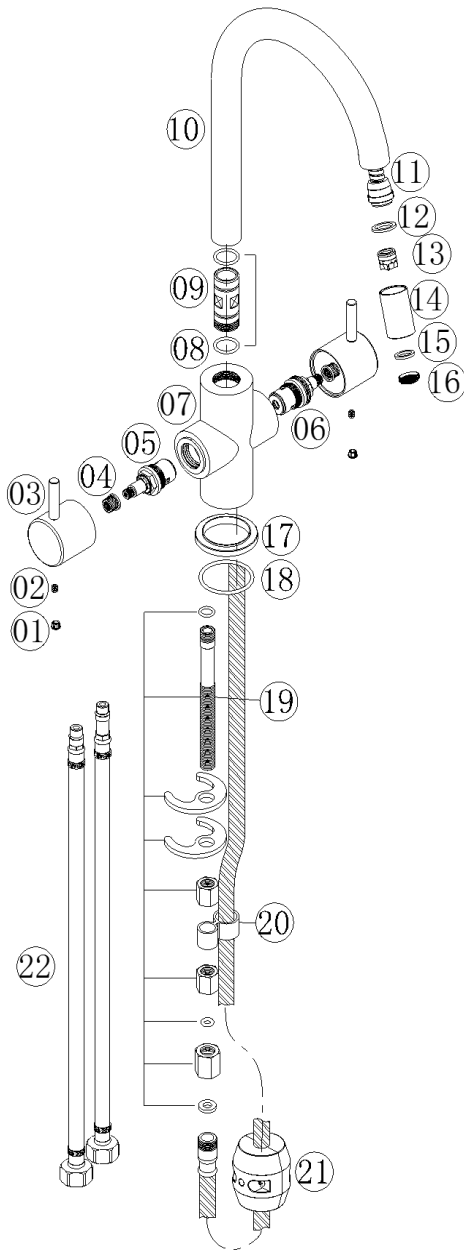
Useful Information	
Minimum operating pressure	0.3 bar
Maximum operating pressure	5 bar
Guarantee length	5 years



Technical Diagram



Exploded Diagram



Component no.	Part Code	Component	Quantity	Material	Spares Available
1	P67	Indice	2	ABS	YES
2	SC5-4SN	Screw	2	Stainless Steel	YES
3	907016-H1	Handle	2	ZINC	YES
4	SA03	Spline Adaptor	2	POM	YES
5	VS01-H118	1/2" CD Valve	1	CW617N+NBR+Ceramic Disc	YES
6	VS01-C118	1/2" CD Valve	1	CW617N+NBR+Ceramic Disc	YES
7	907015Z-01	Tap Body	1	CC757S	NO

8	OR065	O ring	2	NBR	NO
9	907015-N4	Adaptor	1	Brass	NO
10	907015-02S	Spout	1	Stainless Steel	NO
11	SH22*1-M15*1-1500S-B-EP	Shower Hose	1	Stainless Steel+CW617N+ NBR	NO
12	A14-01	Washer	1	NBR	NO
13	DN15	Check Valve	1	POM	NO
14	907015-N7	Aerator Shell	1	CW617N	NO
15	102301-N	Washer	1	NBR	YES
16	01.5501.0.0001	Aerator	1	POM	YES
17	907016-N	Flange	1	ZINC	YES
18	OR111	O ring	1	NBR	YES
19	907015-N5-PP	Fixing kit	1	Steel+NBR+Brass+CW617N	YES
20	N297-B06	Washer	1	ABS	NO
21	907015-N	Aggravation Piece	1	Steel+PP+Stainless Steel	NO
22	BZG-09-01-400-001	Braided Connectors	1	Stainless Steel+BRASS+EPDM	YES

Flow Rates

Pressure (Bar)	Flow rate matrix		
	Hot	Cold	Mixer
	With aerator		
0.1	1.1	1.1	1.7
0.2	2.5	2.5	3.2
0.3	3.5	3.4	4.3
0.4	4.2	4.1	5.2
0.5	4.8	4.7	6.0
0.6	5.4	5.2	6.7
0.7	5.8	5.7	7.3
0.8	6.3	6.2	8.0
0.9	6.8	6.6	8.6
1	7.2	7.0	9.1
2	10.5	10.3	13.7
3	13.2	12.8	17.6

FAQ

What should I do if my tap is dripping/leaking?

Cleaning the valve (if water dripping from tap)

Before carrying out any maintenance, turn off the mains water supply.

Unscrew the cap, loosen the grub screw.

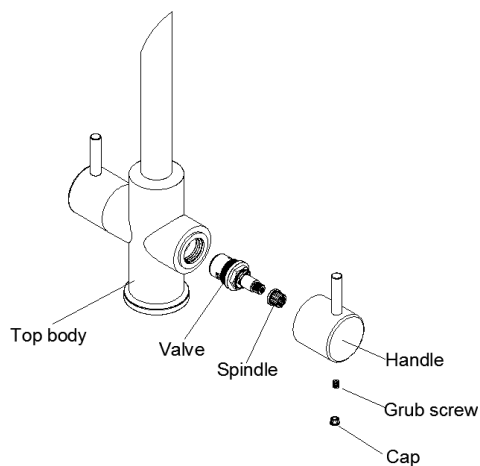
Remove the handle and spindle.

Remove the valve using a suitable spanner, clean thoroughly under cold water to remove any build up of limescale or debris.

If necessary replace the valve.

Replace the valve into the body, tighten the valve using a suitable spanner.

Replace the handle and spindle, tighten the grub screw and re-fit cap to handle .



What does the Guarantee Cover?

The Guarantee Covering leakage, manufacturing defects and Cr pilling

The guarantee does not cover:

- Damage or defects caused by:
 - general wear and tear (including special non-chrome finishes; components such as filters, seals, 'O'rings and washers)
 - incorrect installation
 - repair using non- PPI parts
 - accidental or wilful misuse
 - corrosion and the use of inappropriate cleaning products.
 - system debris including the build up of limescale (which can be controlled through regular servicing and maintenance).
- Compensation for loss of use of the product or consequential loss of any kind.