

STS Professional Tile Backing Board

The first tile backing system with a lifetime guarantee

**QUICK
& EASY**



**HIGH
INSULATION**



**STRONGER
BUILD**



**WATER
RESISTANT**



**LIFETIME
GUARANTEE**



**QUICK
& EASY****HIGH
INSULATION****STRONGER
BUILD****WATER
RESISTANT****LIFETIME
GUARANTEE**

Why professionals choose STS Professional Tile Backing Board

The STS Professional Tile Backing Board is the perfect tile backing system for use on solid floors, providing the ideal foundation on which to lay electric underfloor heating. It is the right choice for kitchens, bathrooms and wetrooms, and comes highly recommended by professional tilers.

- **Quick and easy** to handle, cut and lay
- **High insulation properties**, perfect for solid floors and when using electric underfloor heating
- **Strong**, therefore ideal for large and heavy tiles
- **Water resistant**, unlike plywood which weakens when damp
- **A lifetime guarantee**, providing complete peace of mind

Follow the guidance in this leaflet to learn best practice on installing the STS Professional Tile Backing Board system.

To Install This Product You Will Need:



Drill



Cloth



Level /
Straight Edge



Tape Measure



Fixings (STS Strews
and Washers)



MEGA Strength
Adhesive



Skeleton Gun



Utility Knife

If fixing onto solid floors and walls...



Flexible Tile
Adhesive



SBR Primer



Roller and Tray



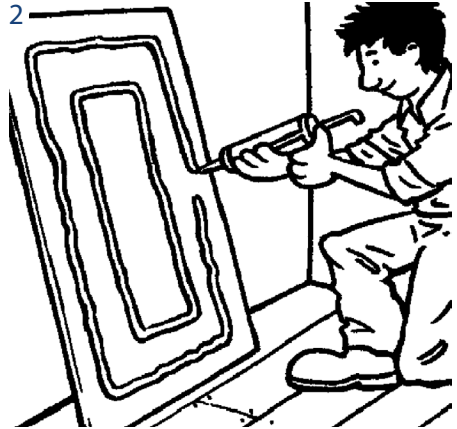
Over Boarding Timber Floors with STS Professional Tile Backing Board



Step 1

Remove any old existing floor coverings, screw down floorboards firmly (timber or chipboard) and sweep clean.

You are now ready for STS Professional Tile Backing Board.



Step 2

STS Professional Tile Backing Boards are lightweight and easy to handle.

Run two small beads of MEGA Strength around the back of the board.

Always wear gloves!

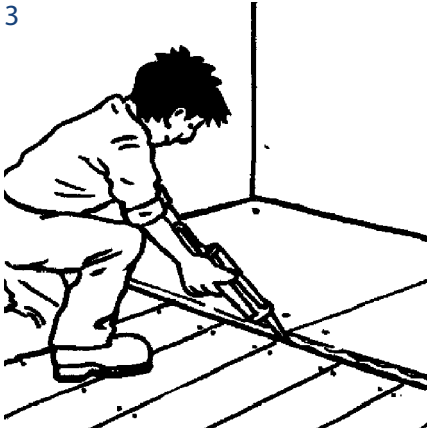
STS Professional Tile Backing Board dimensions:

1200mm x 600mm x 10mm (which covers 0.72 square metres)

Cutting Boards: STS Professional Tile Backing Boards can be easily cut using a utility knife. We always recommend using the STS Stainless Steel Washers to ensure the screws do not pull through the board.



3



Step 3

Lay the boards down onto the timber floor and screw down firmly using a minimum of 6 STS Stainless Steel Screws and Washers per board.

Apply a small bead of MEGA Strength to the edge of each board to seal and reinforce the joints. Stagger the joints where possible.

4



Step 4

Wipe off all excess MEGA Strength adhesive using a damp cloth and use solvent in case of spillage.

Now you're ready to tile!

For sales or advice on installation
Call: 0800 0094 354 or Visit: sts-uk.com

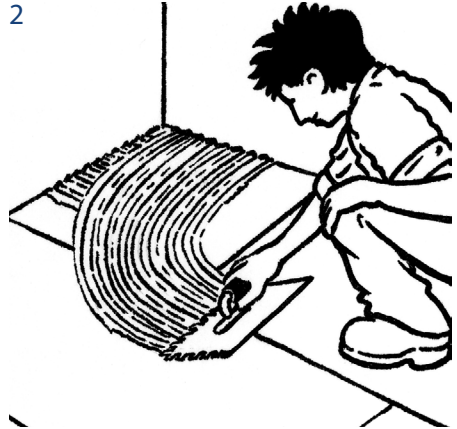
Over Boarding Solid Floors with STS Professional Tile Backing Board



Step 1

Sweep clean, then prime the floor to improve tile adhesion using a sponge to apply SBR (mixed 1 part SBR to 3 parts water).

You are now ready for STS Professional Tile Backing Board.



Step 2

For best results, lay STS Professional Tile Backing Board on single part flexible, rapid set adhesive.

Apply a small bead of MEGA Strength onto the edges of each board to seal and reinforce the joints.

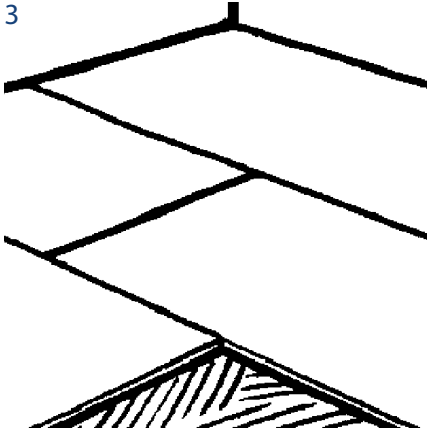
STS Professional Tile Backing Board dimensions:

1200mm x 600mm x 10mm (which covers 0.72 square metres)

Cutting Boards: STS Professional Tile Backing Boards can be easily cut using a utility knife. We always recommend using the STS Stainless Steel Washers to ensure the screws do not pull through the board.



3



Step 3

Stagger the boards where possible.

Roll out the electric underfloor heating directly onto the STS Professional Tile Backing Boards following instructions provided by the manufacturer.

4



Step 4

Use rapid set self-levelling floor compound over the electric underfloor heating.

Once set, lay tiles using a single part flexible tile adhesive.

For sales or advice on installation

Call: 0800 0094 354 or Visit: sts-uk.com

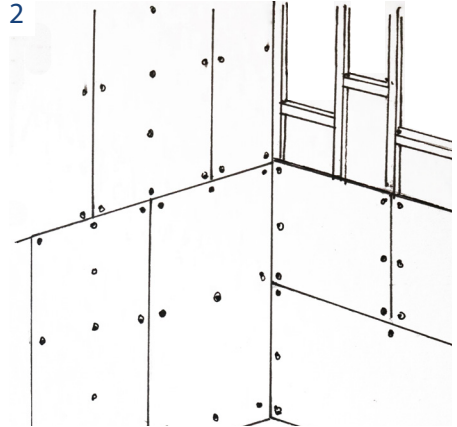
Over Boarding Stud Walls with STS Professional Tile Backing Board



Step 1

Run a bead of MEGA Strength on all vertical and horizontal joints before fixing the board.

Ensure all edges of the board are supported by studwork or noggins.



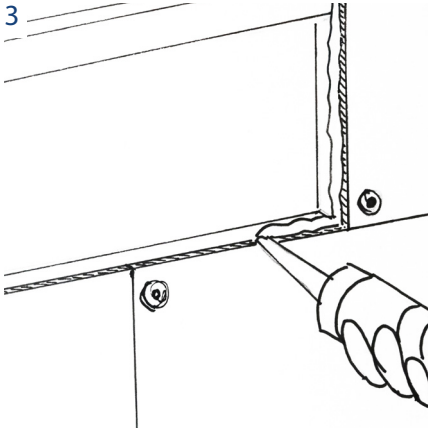
Step 2

Fix the boards onto studwork and screw using a minimum of 6 STS Stainless Steel Screws and Washers per board.

STS Professional Tile Backing Board dimensions:

1200mm x 600mm x 10mm (which covers 0.72 square metres)

Cutting Boards: STS Professional Tile Backing Boards can be easily cut using a utility knife. We always recommend using the STS Stainless Steel Washers to ensure the screws do not pull through the board.



Step 3

Run a bead of Mega Strength around the edge of the board before offering up the next board. This reinforces and waterproofs the joint, eliminating the need to tape the joints.

Stagger the boards where possible.

Wipe off excess adhesive using a cloth and use solvent in case of spillage.

PRO TIP - Studs to be max 600mm centres with cross noggins on board joints.



Step 4

You're now ready to tile onto the wall with your preferred tile adhesive. We would always recommend using a single part flexible bag adhesive.



Over Boarding Solid Walls with STS Professional Tile Backing Board



Step 1

Always start by priming the wall with 1 coat of SBR primer (mix 1 part SBR to 3 parts water).



Step 2

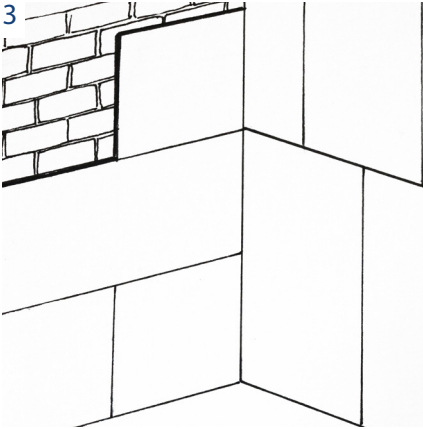
For best results, simply 'dot and dab' using a single part flexible adhesive. The dab depth should be a maximum of 25mm. 5kg of cement powder adhesive should be used per board and this will equate to approximately 30 dabs.

Apply the boards directly to the wall keeping them level, plumb and flat.

STS Professional Tile Backing Board dimensions:

1200mm x 600mm x 10mm (which covers 0.72 square metres)

Cutting Boards: STS Professional Tile Backing Boards can be easily cut using a utility knife. We always recommend using the STS Stainless Steel Washers to ensure the screws do not pull through the board.

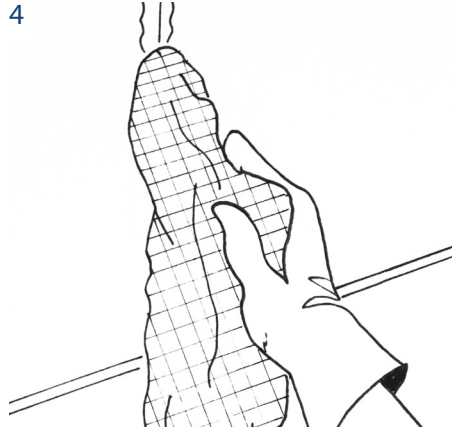


Step 3

Secure with a minimum of 6 STS Stainless Steel Screws and Washers. Ensure the solid wall is drilled and plugged appropriately to take the fixing.

Apply a small bead of MEGA Strength onto the edges of each board to achieve a waterproof seal.

PRO TIP - MEGA Strength Adhesive will achieve a waterproof seal, so there's no need for tape.



Step 4

Wipe off excess MEGA Strength using a damp cloth and use solvent in case of spillage.

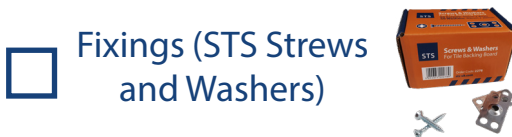
Stagger the boards where possible, using a straight edge to keep the boards plumb.

Now you're ready to tile!




Installation Checklist

Overboarding Timber Floors and Walls



Installation Checklist

Overboarding Solid Floors and Walls

- Drill 
- Skeleton Gun 
- Cloth 
- Utility Knife 
- Level / Straight Edge 
- Flexible Tile Adhesive 
- Tape Measure 
- SBR Primer 
- Fixings (STS Screws and Washers) 

- Roller and Tray 
- MEGA Strength Adhesive 

'Lots of customers are asking for electric underfloor heating. I choose STS Professional Tile Backing Board to guarantee the job'

Craig Sellars

Professional tiler since 1984



STS Professional Tile Backing Board - Guarantee and guidance

Lifetime Guarantee Terms

The STS Professional Tile Backing Board lifetime guarantee only applies when the correct installation procedures, as set out in our Installation Guide, have been followed and the recommended STS essentials used during installation.

LIFETIME
GUARANTEE



For guidance only

As conditions of use and any labour involved are beyond our control, the end user must satisfy himself by prior testing that the product is suitable for his specific application. No responsibility can be accepted or any warranty given by our representatives, agents or distributors.



Tested and Approved

Tested and approved: STS Professional Tile Backing Boards with CE approval and low in emissions.



For sales or advice on installation

Call: **0800 0094 354** or Visit: **sts-uk.com**

Lines open: Monday-Friday **7am-5pm**

STS