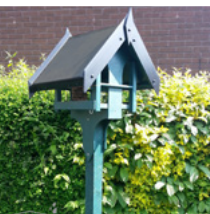
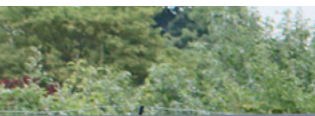




**Sky
Guard**[®]

Roofs designed to last a lifetime



LONG LASTING | EASY TO FIT
Never replace your shed roof again!

Fitting Instructions for Shed Roofs



Remove the old roof covering and any nails. Re-board if the roof is rotten or if the roofing felt wont come off cleanly.



Apply a bead of edge sealant and press the membrane onto it. Once dried this will hold the membrane securely.



Relax the rubber membrane by laying it in position on the roof for 20 minutes. Fold membrane back to centre of roof for adhesive when ready.



Re-install any existing timber barge boards to help secure the membrane perimeter. Replace if rotten.



Apply the adhesive working IN STAGES towards the edge of the roof. Roll membrane onto adhesive whilst wet. Re-apply more if necessary.



Trim the membrane using a pair of scissors and the underside of the trim as a guide.

Find out more and watch the video at:
www.skyguard50.co.uk