

Wickes

PADDLE MIXER

1220W



PDN122
223738

CONTENTS

GENERAL POWER TOOL SAFETY WARNINGS 3

COMPONENT LIST 5

ACCESSORIES 5

SYMBOLS 6

TECHNICAL DATA 6

NOISE INFORMATION 7

OPERATING INSTRUCTIONS 8

WORKING HINTS FOR YOUR MIXER 9

TROUBLESHOOTING 9

MAINTENANCE 10


ENVIRONMENTAL PROTECTION 10

PLUG REPLACEMENT (ONLY FOR REWIRABLE PLUG OF UK & IRELAND) 10

DECLARATION OF CONFORMITY 11

ORIGINAL INSTRUCTION

GENERAL POWER TOOL SAFETY WARNINGS

 **WARNING!** Read all safety warnings, instructions, illustrations and specifications provided with this power tool. Failure to follow all instructions listed below may result in electric shock, fire and/or serious injury.

SAVE ALL WARNINGS AND INSTRUCTIONS FOR FUTURE REFERENCE.

The term "power tool" in the warnings refers to your mains-operated (corded) power tool or battery-operated (cordless) power tool.

1. WORK AREA SAFETY

- a) **Keep work area clean and well lit.** Cluttered or dark areas invite accidents.
- b) **Do not operate power tools in explosive atmospheres, such as in the presence of flammable liquids, gases or dust.** Power tools create sparks which may ignite the dust or fumes.
- c) **Keep children and bystanders away while operating a power tool.** Distractions can cause you to lose control.

2. ELECTRICAL SAFETY

- a) **Power tool plugs must match the outlet. Never modify the plug in any way. Do not use any adapter plugs with earthed (grounded) power tools.** Unmodified plugs and matching outlets will reduce risk of electric shock.
- b) **Avoid body contact with earthed or grounded surfaces, such as pipes, radiators, ranges and refrigerators.** There is an increased risk of electric shock if your body is earthed or grounded.
- c) **Do not expose power tools to rain or wet conditions.** Water entering a power tool will increase the risk of electric shock.
- d) **Do not abuse the cord. Never use the cord for carrying, pulling or unplugging the power tool. Keep cord away from heat, oil, sharp edges or moving parts.** Damaged or entangled cords increase the risk of electric shock.
- e) **When operating a power tool outdoors, use an extension cord suitable for outdoor use.** Use of a cord suitable for outdoor use reduces the risk of electric shock.
- f) **If operating a power tool in a damp location is unavoidable, use a residual current device (RCD) protected supply.** Use of an RCD reduces the risk of electric shock.

3. PERSONAL SAFETY

- a) **Stay alert, watch what you are doing and use common sense when operating a power tool. Do not use a power tool while you are tired or under the influence of drugs, alcohol or medication.** A moment of inattention while operating power tools may result in serious personal injury.
- b) **Use personal protective equipment. Always wear eye protection.** Protective equipment such as dust mask, non-skid safety shoes, hard hat, or hearing protection used for appropriate conditions will reduce personal injuries.
- c) **Prevent unintentional starting. Ensure the switch is in the off-position before connecting to power source and/or battery pack, picking up or carrying the tool.** Carrying power tools with your finger on the switch or energising power tools that have the switch on invites accidents.
- d) **Remove any adjusting key or wrench before turning the power tool on.** A wrench or a key left attached to a rotating part of the power tool may result in personal injury.
- e) **Do not overreach. Keep proper footing and balance at all times.** This enables better control of the power tool in unexpected situations.
- f) **Dress properly. Do not wear loose clothing or jewellery. Keep your hair and clothing away from moving parts.** Loose clothes, jewellery or long hair can be caught in moving parts.
- g) **If devices are provided for the connection of dust extraction and collection facilities, ensure these are connected and properly used.** Use of dust collection can reduce dust-related hazards.
- h) **Do not let familiarity gained from frequent use of tools allow you to become complacent and ignore tool safety principles.** A careless action can cause severe injury within a fraction of a second.

4. POWER TOOL USE AND CARE

- a) **Do not force the power tool. Use the correct power tool for your application.** The correct power tool will do the job better and safer at the rate for which it was designed.
- b) **Do not use the power tool if the switch does not turn it on and off.** Any power tool that cannot be controlled with the switch is dangerous and must be repaired.
- c) **Disconnect the plug from the power source and/or remove the battery pack, if detachable, from**

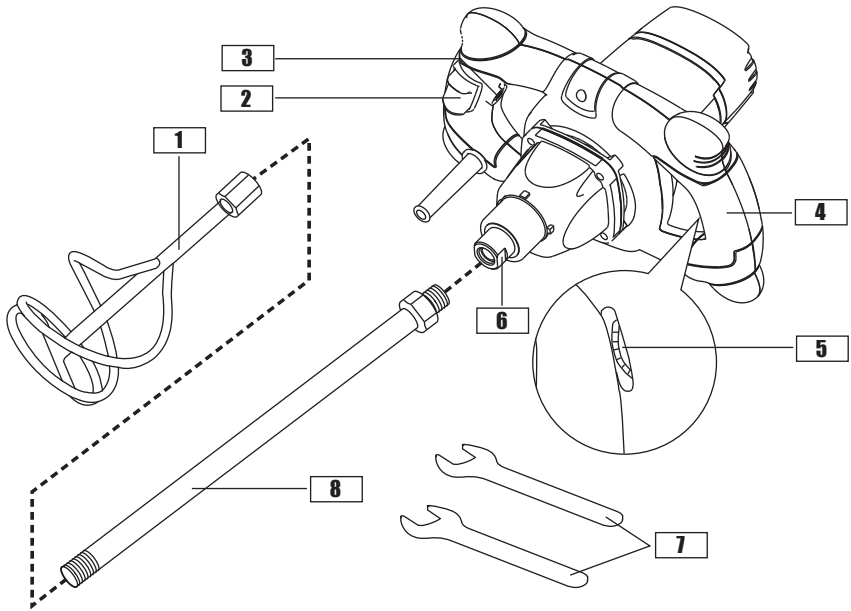
GENERAL POWER TOOL SAFETY WARNINGS

- the power tool before making any adjustments, changing accessories, or storing power tools.** Such preventive safety measures reduce the risk of starting the power tool accidentally.
- d) Store idle power tools out of the reach of children and do not allow persons unfamiliar with the power tool or these instructions to operate the power tool.** Power tools are dangerous in the hands of untrained users.
 - e) Maintain power tools and accessories. Check for misalignment or binding of moving parts, breakage of parts and any other condition that may affect the power tool's operation. If damaged, have the power tool repaired before use.** Many accidents are caused by poorly maintained power tools.
 - f) Keep cutting tools sharp and clean.** Properly maintained cutting tools with sharp cutting edges are less likely to bind and are easier to control.
 - g) Use the power tool, accessories and tool bits etc. in accordance with these instructions, taking into account the working conditions and the work to be performed.** Use of the power tool for operations different from those intended could result in a hazardous situation.
 - h) Keep handles and grasping surfaces dry, clean and free from oil and grease.** Slippery handles and grasping surfaces do not allow for safe handling and control of the tool in unexpected situations.
- 5. SERVICE**
- a) Have your power tool serviced by a qualified repair person using only identical replacement parts.** This will ensure that the safety of the power tool is maintained.

MIXER SAFETY INSTRUCTIONS

- a) Hold the tool with both hands at the intended handles.** Loss of control can cause personal injury.
- b) Ensure sufficient ventilation when mixing flammable materials to avoid a hazardous atmosphere.** Developing vapour may be inhaled or be ignited by the sparks the power tool produces.
- c) Do not mix food.** Power tools and their accessories are not designed for processing food.
- d) Keep the cord away from the working area.** The cord may be entangled by the mixer basket.
- e) Ensure that the mixing container is placed in a firm and secure position.** A container that is not properly secured may move unexpectedly.
- f) Ensure that no liquid splashes against the housing of the power tool.** Liquid that has penetrated the power tool can cause damage and lead to electric shock.
- g) Follow the instructions and warnings for the material to be mixed.** Material to be mixed may be harmful.
- h) If the power tool falls into the material to be mixed, unplug the tool immediately and have the power tool checked by a qualified repair person.** Reaching into the bucket with the tool still plugged in can lead to electric shock.
- i) Do not reach into the mixing container with your hands or insert any other objects into it while mixing.** Contact with the mixer basket may lead to serious personal injury.
- j) Start up and run down the tool in the mixing container only.** The mixer basket may bend or spin in an uncontrolled manner.

COMPONENT LIST



- 1** Mixing paddle
- 2** On/off switch
- 3** Lock button
- 4** Hand grip areas

- 5** Variable speed control
- 6** Drive spindle
- 7** Spanner
- 8** Extension tube

ACCESSORIES

- Spanner
- Mixing paddle

2
1

We recommend that you purchase your accessories from the same store that sold you the tool. Use good quality accessories marked with a well-known brand name. Choose the type according to the work you intend to undertake. Refer to the accessory packaging for further details. Store personnel can assist you and offer advice.

SYMBOLS



To reduce the risk of injury, read all of this instruction manual



Warning



Wear ear protection



Wear eye protection



Wear dust mask



Double insulated



Waste electrical products must not be disposed of with household waste. Please recycle where facilities exist. Check with your local authorities or retailer for recycling advice.

TECHNICAL DATA

Rated Voltage	230-240V~50Hz
Rated Power	1220W
Rated No-load speed	0-800 /min
Mixing volume	60-80L
Spindle thread	M14
Machine weight	4.37 Kg
Protection class	□ / II

NOISE INFORMATION

A weighted sound pressure

A weighted sound power

K_{pA} & K_{wA}

Wear ear protection.

L_{pA} : 84 dB(A)

L_{wA} : 95 dB(A)

3.0dB(A)

VIBRATION INFORMATION

Vibration total values (triax vector sum) determined according to EN 62841:
Vibration emission value $a_{h,D} = 4.24 \text{ m/s}^2$
Uncertainty $K = 1.5 \text{ m/s}^2$

The declared vibration total value and the declared noise emission value have been measured in accordance with a standard test method and may be used for comparing one tool with another.

The declared vibration total value and the declared noise emission value may also be used in a preliminary assessment of exposure.

! WARNING! The vibration and noise emissions during actual use of the power tool can differ from the declared value depending on the ways in which the tool is used especially what kind of workpiece is processed dependant on the following examples and other variations on how the tool is used:

How the tool is used and the materials being cut or drilled.

The tool being in good condition and well maintained.

The use of the correct accessory for the tool and ensuring it is sharp and in good condition.

The tightness of the grip on the handles and if any anti vibration and noise accessories are used.

And the tool is being used as intended by its design and these instructions.

This tool may cause hand-arm vibration syndrome if its use is not adequately managed.

! WARNING! To be accurate, an estimation of exposure level in the actual conditions of use should also take account of all parts of the operating cycle such as the times when the tool is switched off and when it is running idle but not actually doing the job. This may significantly reduce the exposure level over the total working period, helping to minimize your vibration exposure risk.

Always use sharp chisels, drills and blades.

Maintain this tool in accordance with these instructions and keep well lubricated (where appropriate).

If the tool is to be used regularly then invest in anti vibration and noise accessories.

Plan your work schedule to spread any high vibration tool use across a number of days.

OPERATING INSTRUCTIONS



NOTE: Before using the tool, read the instruction book carefully.

Intended Use

This machine is designed to mix liquid and powdery building materials such as paint, mortar, adhesive, plaster and similar substances. It must be fitted with the correct mixing tool for the consistency and quantity of material in question in order to achieve the required mixing effect.

1. INSTALL / REPLACE THE MIXING PADDLE

(See Fig. A1,A2)

Assemble the paddle and extension bar, tighten the joint using the two spanners supplied. Applying some lubricant to the threads when you assemble will help disassembly when you need to store the machine or change the paddle.

Fit the paddle with extension to the mixer head. Again, tighten using the two spanners provided.

To remove the mixing paddle, loosen it in reverse direction with the spanners.

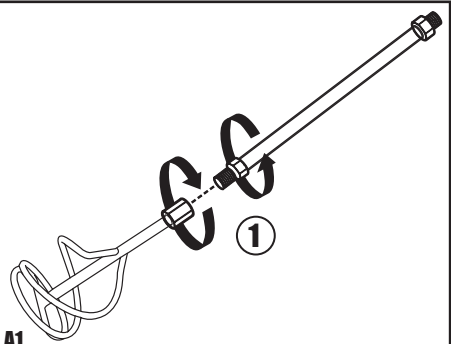


Fig. A1

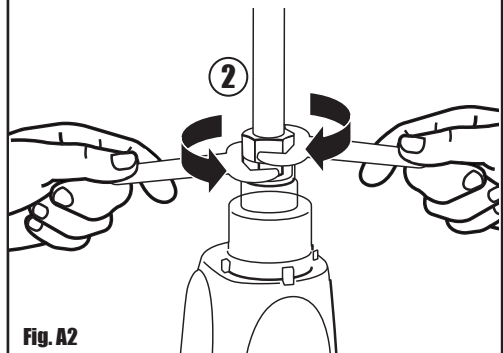


Fig. A2

2. ON/OFF SWITCH (See Fig. B)

Depress the lock button (3) then on/off switch (2), release the on/off switch (2) then lock button (3). Your switch is now locked on for continuous use. To switch off your tool just depress and release on/off switch.

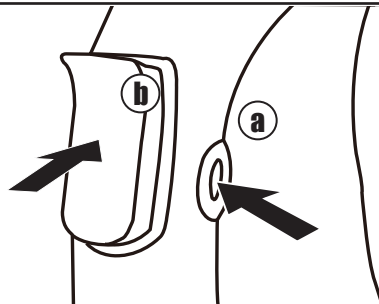
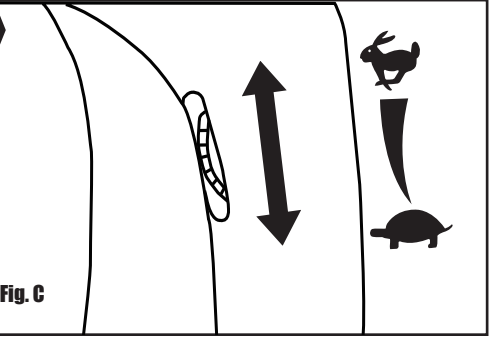


Fig. B

3. VARIABLE SPEED CONTROL (See Fig. C)

The variable speed control (5) allows you to vary the speed of the mixer. The speed increases as you turn the switch towards high speed symbol direction and decreases for the low speed symbol direction. Just turn variable speed control to adjust speed.

Fig. C



4. HAND GRIP AREAS

Always hold your tool firmly with both hands when operating and take a secure stance.

WORKING HINTS FOR YOUR MIXER

1. Keep connection nut clean, and apply some lubrication on thread when you install the mixing paddle (1).
2. Guide the machine through the mixing vessel. Continue mixing the material until it is fully homogenized.
3. When you insert the mixer into the material to be mixed or take it out, reduce the speed.
4. When you have finished the mixing work, clean the mixer.
5. If your power tool becomes hot, set the speed to maximum and run with no load for 2-3 minutes to cool the motor.

TROUBLESHOOTING

1. If your power tool does not start, check the plug on the power supply first.
2. If there is difficulty loosening the mixing paddle (1), apply lubrication.
3. If a fault can not be rectified, return the tool to an authorized dealer for repair.

MAINTENANCE

Remove the plug from the socket before carrying out any adjustment, servicing or maintenance.

There are no user serviceable parts in your power tool. Never use water or chemical cleaners to clean your power tool. Wipe clean with a dry cloth. Always store your power tool in a dry place. Keep the motor ventilation slots clean. Keep all working controls free of dust. Occasionally you may see sparks through the ventilation slots. This is normal and will not damage your power tool.

If the supply cord is damaged, it must be replaced by the manufacturer, its service agent or similarly qualified persons in order to avoid a hazard.

ENVIRONMENTAL PROTECTION



Waste electrical products must not be disposed of with household waste. Please recycle where facilities exist. Check with your local authorities or retailer for recycling advice.

PLUG REPLACEMENT (ONLY FOR REWIRABLE PLUG OF UK & IRELAND)

If you need to replace the fitted plug then follow the instructions below.

IMPORTANT

The wires in the mains lead are colored in accordance with the following code:

Blue = Neutral

Brown = Live

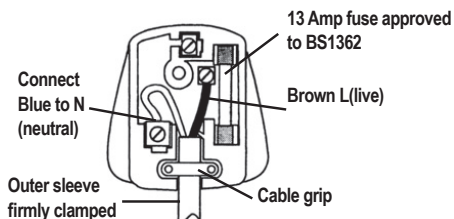
As the colors of the wires in the mains lead of this appliance may not correspond with the colored markings identifying the terminals in your plug, proceed as follows. The wire which is colored blue must be connected to the terminal which is marked with N. The wire which is colored brown must be connected to the terminal which is marked with L.



WARNING:

Never connect live or neutral wires to the earth terminal of the plug. Only fit an approved 13A BS1363/A plug and the correct rated fuse.

Note: If a moulded plug is fitted and has to be removed take great care in disposing of the plug and severed cable, it must be destroyed to prevent engaging into a socket.



DECLARATION OF CONFORMITY

We,
Wickes Building Supplies Limited

Declare that this product: PADDLE MIXER

Description and SKU code: 223738

Complies with the following Directives and Regulations:

2006/42/EC, Machinery Directive

2014/30/EU, Electromagnetic Compatibility Directive

2011/65/EU & (EU)2015/863 (RoHS), Restriction of Hazardous Substances Directive

and conforms to the following standards:

Standards specific to this product:

EN 62841-1

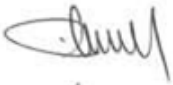
EN 62841-2-10

EN 55014-1

EN 55014-2

EN 61000-3-2

EN 61000-3-3



28th January, 2021
Philip Ansell
Category Technical Manager
Wickes
Vision House
19 Colonial Way
Watford
WD24 4JL"

Customer Helpline 0345 2005409