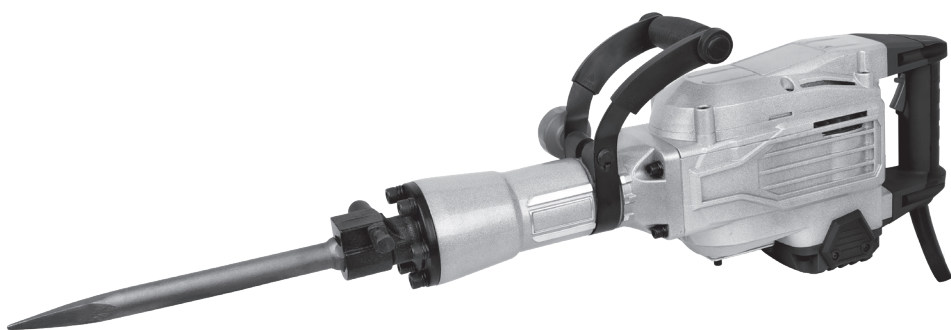


Wickes

BREAKER

1700W



PDH170DS
223725

CONTENTS

GENERAL POWER TOOL SAFETY WARNINGS 3

COMPONENT LIST 5

ACCESSORIES 6

SYMBOLS 6

TECHNICAL DATA 6

NOISE INFORMATION 7

OPERATING INSTRUCTIONS 8

WORKING HINTS FOR YOUR TOOL 11

TROUBLESHOOTING 11

MAINTENANCE 11


ENVIRONMENTAL PROTECTION 11


PLUG REPLACEMENT (ONLY FOR REWIRABLE PLUG OF UK & IRELAND) 12

DECLARATION OF CONFORMITY 13

ORIGINAL INSTRUCTION

GENERAL POWER TOOL SAFETY WARNINGS

 **WARNING!** This machine is capable of generating significant forces, strict adherence to safety guidance in this booklet is essential as is the use of appropriate personal protective equipment.

 **WARNING!** Read all safety warnings, instructions, illustrations and specifications provided with this power tool. Failure to follow all instructions listed below may result in electric shock, fire and/or serious injury.

SAVE ALL WARNINGS AND INSTRUCTIONS FOR FUTURE REFERENCE.

The term "power tool" in the warnings refers to your mains-operated (corded) power tool or battery-operated (cordless) power tool.

1. WORK AREA SAFETY

- a) **Keep work area clean and well lit.** Cluttered or dark areas invite accidents.
- b) **Do not operate power tools in explosive atmospheres, such as in the presence of flammable liquids, gases or dust.** Power tools create sparks which may ignite the dust or fumes.
- c) **Keep children and bystanders away while operating a power tool.** Distractions can cause you to lose control.

2. ELECTRICAL SAFETY

- a) **Power tool plugs must match the outlet. Never modify the plug in any way. Do not use any adapter plugs with earthed (grounded) power tools.**
Unmodified plugs and matching outlets will reduce risk of electric shock.
- b) **Avoid body contact with earthed or grounded surfaces, such as pipes, radiators, ranges and refrigerators.** There is an increased risk of electric shock if your body is earthed or grounded.
- c) **Do not expose power tools to rain or wet conditions.** Water entering a power tool will increase the risk of electric shock.
- d) **Do not abuse the cord. Never use the cord for carrying, pulling or unplugging the power tool. Keep cord away from heat, oil, sharp edges or moving parts.** Damaged or entangled cords increase the risk of electric shock.
- e) **When operating a power tool outdoors, use an extension cord suitable for outdoor use.** Use of a cord suitable for outdoor use reduces the risk of electric shock.

- f) **If operating a power tool in a damp location is unavoidable, use a residual current device (RCD) protected supply.** Use of an RCD reduces the risk of electric shock.

3. PERSONAL SAFETY

- a) **Stay alert, watch what you are doing and use common sense when operating a power tool. Do not use a power tool while you are tired or under the influence of drugs, alcohol or medication.** A moment of inattention while operating power tools may result in serious personal injury.
- b) **Use personal protective equipment. Always wear eye protection.** Protective equipment such as dust mask, non-skid safety shoes, hard hat, or hearing protection used for appropriate conditions will reduce personal injuries.
- c) **Prevent unintentional starting. Ensure the switch is in the off-position before connecting to power source and/or battery pack, picking up or carrying the tool.** Carrying power tools with your finger on the switch or energising power tools that have the switch on invites accidents.
- d) **Remove any adjusting key or wrench before turning the power tool on.** A wrench or a key left attached to a rotating part of the power tool may result in personal injury.
- e) **Do not overreach. Keep proper footing and balance at all times.** This enables better control of the power tool in unexpected situations.
- f) **Dress properly. Do not wear loose clothing or jewellery. Keep your hair and clothing away from moving parts.** Loose clothes, jewellery or long hair can be caught in moving parts.
- g) **If devices are provided for the connection of dust extraction and collection facilities, ensure these are connected and properly used.** Use of dust collection can reduce dust-related hazards.

4. POWER TOOL USE AND CARE

- a) **Do not force the power tool. Use the correct power tool for your application.** The correct power tool will do the job better and safer at the rate for which it was designed.
- b) **Do not use the power tool if the switch does not turn it on and off.** Any power tool that cannot be controlled with the switch is dangerous and must be repaired.
- c) **Disconnect the plug from the power source and/**

GENERAL POWER TOOL SAFETY WARNINGS

or remove the battery pack, if detachable, from the power tool before making any adjustments, changing accessories, or storing power tools. Such preventive safety measures reduce the risk of starting the power tool accidentally.

- d) Store idle power tools out of the reach of children and do not allow persons unfamiliar with the power tool or these instructions to operate the power tool.** Power tools are dangerous in the hands of untrained users.
- e) Maintain power tools and accessories. Check for misalignment or binding of moving parts, breakage of parts and any other condition that may affect the power tool's operation. If damaged, have the power tool repaired before use.** Many accidents are

caused by poorly maintained power tools.

- f) Keep cutting tools sharp and clean.** Properly maintained cutting tools with sharp cutting edges are less likely to bind and are easier to control.
 - g) Use the power tool, accessories and tool bits etc. in accordance with these instructions, taking into account the working conditions and the work to be performed.** Use of the power tool for operations different from those intended could result in a hazardous situation.
- 5. SERVICE**
- a) Have your power tool serviced by a qualified repair person using only identical replacement parts.** This will ensure that the safety of the power tool is maintained.

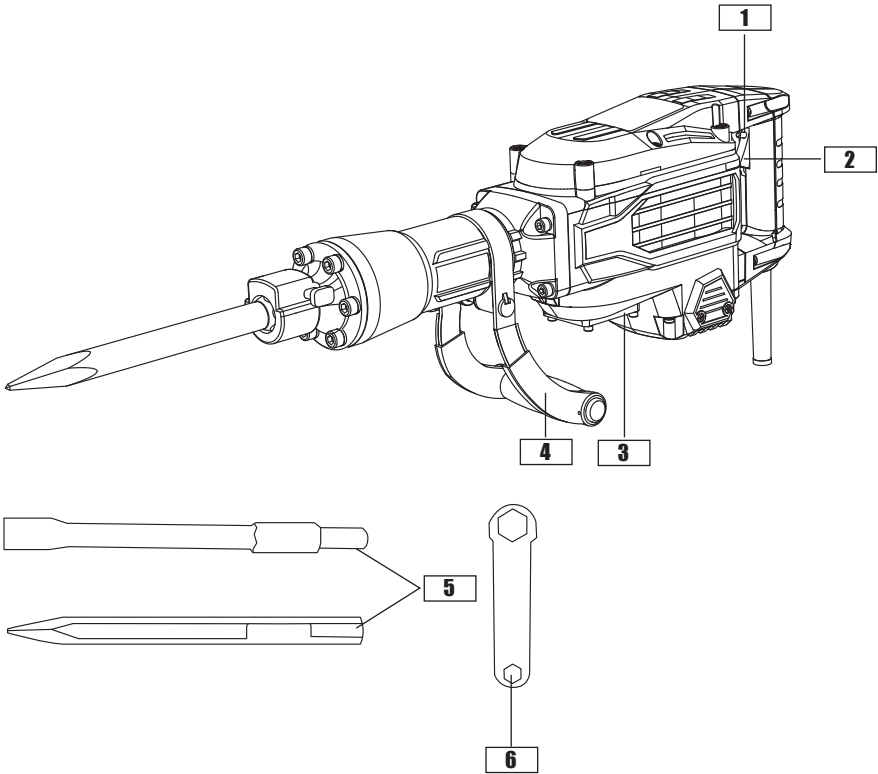
HAMMER SAFETY WARNINGS

- 1. Wear ear protectors.** Exposure to noise can cause hearing loss.
- 2. Use auxiliary handle(s), if supplied with the tool.** Loss of control can cause personal injury.
- 3. Hold power tool by insulated gripping surfaces, when performing an operation where the cutting accessory may contact hidden wiring or its own cord.** Cutting accessory contacting a "live" wire may make exposed metal parts of the power tool "live" and could give the operator an electric shock.

ADDITIONAL SAFETY RULES FOR HAMMER

- 1. Always wear a dust mask.

COMPONENT LIST



- 1** Lock-on button
- 2** On/off switch
- 3** Grease box cover

- 4** Auxiliary handle
- 5** Point chisel and flat chisel
- 6** Spanner

ACCESSORIES

Auxiliary handle	1
Flat Chisel	1
Point Chisel	1
Wrench	1

We recommend that you purchase your accessories from the same store that sold you the tool. Use good quality accessories marked with a well-known brand name. Choose the type according to the work you intend to undertake. Refer to the accessory packaging for further details. Store personnel can assist you and offer advice.

SYMBOLS



To reduce the risk of injury, read all of this instruction manual



Wear protective footwear



Warning



Wear dust mask



Wear ear protection



Double insulated



Wear eye protection



Waste electrical products must not be disposed of with household waste. Please recycle where facilities exist. Check with your local authorities or retailer for recycling advice.



Wear protective gloves

TECHNICAL DATA

Rated Voltage	230~50Hz
Rated Power	1700W
HEX chuck size	30mm
Impact rate	1400 /min
Charger Protection class	□/II
Impact energy	50J
Lubricant volume	70ml
Grease number	7188
Machine weight	16kg

NOISE INFORMATION

A weighted sound pressure

A weighted sound power

K_{PA} & K_{WA}

Wear ear protection.

L_{PA} : 92.87dB(A)

L_{WA} : 103.87dB(A)


3.0dB(A)

VIBRATION INFORMATION

Vibration total values (triax vector sum) determined according to EN 60745:

chiseling	Vibration emission value $a_{hB} = 18.575 \text{ m/s}^2$
	Uncertainty $K = 1.52 \text{ m/s}^2$

The declared vibration total value may be used for comparing one tool with another, and may also be used in a preliminary assessment of exposure.

 **WARNING!** The vibration emission value during actual use of the power tool can differ from the declared value depending on the ways in which the tool is used dependant on the following examples and other variations on how the tool is used:

How the tool is used and the materials being cut or drilled.


The tool being in good condition and well maintained

The use the correct accessory for the tool and ensuring it is sharp and in good condition.

The tightness of the grip on the handles and if any anti vibration accessories are used.

And the tool is being used as intended by its design and these instructions.

This tool may cause hand-arm vibration syndrome if its use is not adequately managed

 **WARNING!** To be accurate, an estimation of exposure level in the actual conditions of use should also take account of all parts of the operating cycle such as the times when the tool is switched off and when it is running idle but not actually doing the job. This may significantly reduce the exposure level over the total working period, helping to minimize your vibration exposure risk.

ALWAYS use sharp chisels, drills and blades

Maintain this tool in accordance with these instructions and keep well lubricated (where appropriate)

If the tool is to be used regularly then invest in anti vibration accessories.

Plan your work schedule to spread any high vibration tool use across a number of days.

OPERATING INSTRUCTIONS



NOTE: Before using the tool, read the instruction book carefully.

Intended Use

This machine is suitable for gouging on concrete, bricks, stone and asphalt. After appropriate accessories are installed, it can also be used for squeezing and tamping.

For low temperatures, new power tool or long-time storage, the machine reaches the full impact rate only after a certain time. This start-up time can be shortened by striking the chisel in the machine against the floor one time.

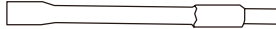
Point chisel (For gravel)



Total length: 410 mm

Standard size: 30mm (Hexagon)

Flat chisel (For crushing asphalt, grooving and squaring)



Total length: 410 mm

Standard size: 30mm (Hexagon)

1. LUBRICATION MACHINE (See Fig. A)

WARNING! The lubricant oil is already filled into the tank before use, check the oil tank regularly. Refill oil if you cannot see any oil through the sight glass.

CHECKING THE OIL LEVEL

The lubricant filler screw (a) on the bottom of the machine is fitted with a sight glass. Hold the machine in the upright position so that the chisel tip points downwards.

Use the sight glass on the lubricant filler screw (a) to check the oil level.

Refill oil if you cannot see any oil through the sight glass.

FILL LUBRICATING OIL

Open the lubricant filler screw (a) on the bottom of the machine using the included spanner (6). Make sure not to damage the gasket.

Top-up with oil. See technical data on page 6.

Close the lubricant filler screw (a) to check the oil level.

If the lubrication oil is in the middle of the sight glass, you filled enough oil.

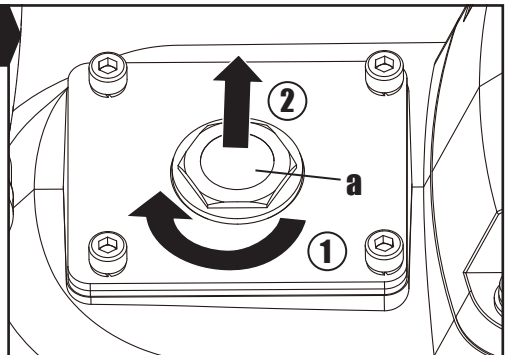


Fig. A

2. FITTING THE AUXILIARY HANDLE (See Fig. B1,B2)

For your personal safety we recommend using the auxiliary handle (4) at all times.

To adjust the handle (4), loosen the knob on the auxiliary handle.

Rotate the handle (4) around the handle collar and/or rotate the handle bar to the desired position.

Tighten the knob fully.

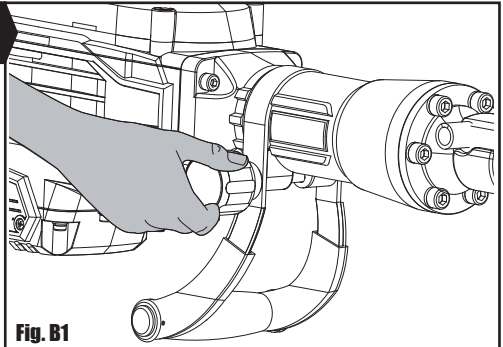


Fig. B1

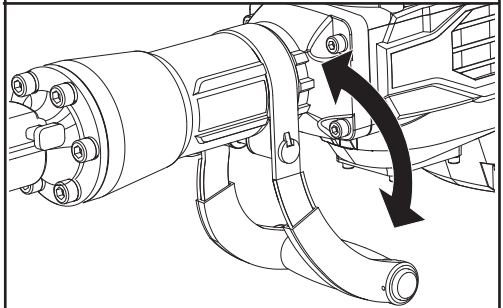


Fig. B2

3. FITTING AND REMOVING THE CHISEL (See Fig. C1,C2)

WARNING! Remove the plug from the socket before carrying out any adjustment, servicing or maintenance.

FITTING THE CHISEL (SEE FIG. C1)

Clean and lightly oil the bit before inserting.

Pull the stop lever and rotate it to "Unlock" position.

Insert the chisel (5) into the chuck.

Pull the stop lever and rotate it to "Lock" position.

REMOVING THE CHISEL (SEE FIG. C2)

Pull the stop lever and rotate it to "Unlock" position.

Remove the chisel (5).

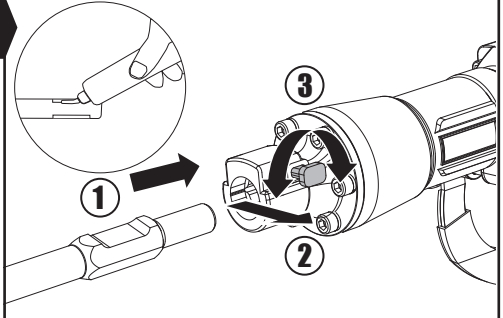


Fig. C1

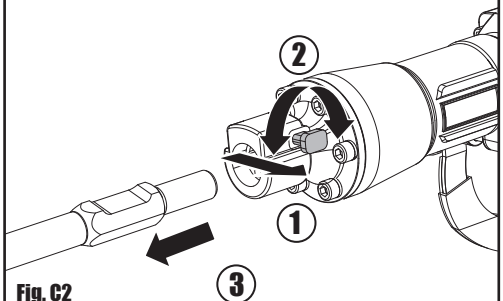


Fig. C2

4. OPERATING THE ON/OFF SWITCH (See Fig. D)

ON/OFF SWITCH

Depress the on/off switch (2) to start the tool and release it to stop your tool.

CONTINUOUS USE

Depress on/off switch (2) then lock-on button (1), release on/off switch (2) first and lock-on button (1) second. Your switch is now locked on for continuous use. To switch off your tool just depress and release the on/off switch (2).

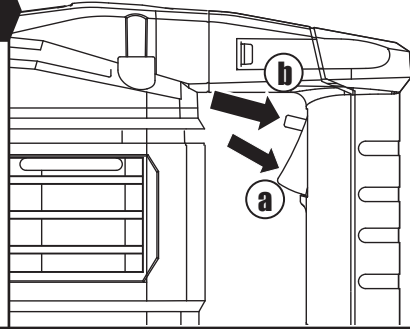


Fig. D

5. CHANGE THE CARBON BRUSH (See Fig. E1, E2)

WARNING! Remove the mains plug from socket before changing the carbon brushes.

REPLACE THE CARBON BRUSH AS FOLLOWS:

- 1) Unscrew the outer brush cover with a Phillips screwdriver (not provided). (See Fig. E1)
- 2) Remove the outer brush cover and unscrew the inner brush cover with a flat screwdriver (not provided). (See Fig. E2)
- 3) If the carbon on either one or both brushes has worn down to 6mm or less, it should be replaced. Always replace both brushes at the same time.
- 4) Insert the new brush (not provided) and replace the brush cap.

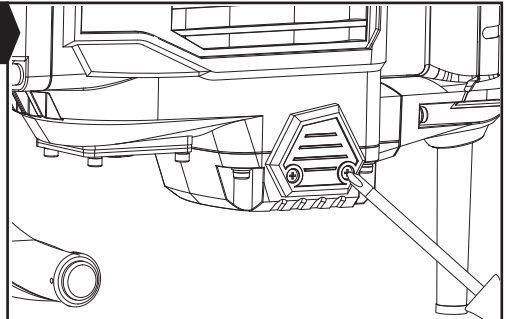


Fig. E1

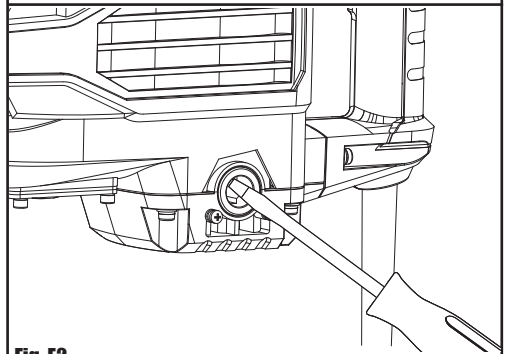


Fig. E2

WORKING HINTS FOR YOUR TOOL

Always use sharp good quality chisels. The performance of the chisel is dependent on the quality of the bits used.

1. Reduce pressure on the bit when it is about to break through.
2. Always operate tool using both the handle and the front handle.
3. Make sure that you wear all necessary personal protective equipment.
4. Do not apply excessive pressure to the tool. Expressive force does not speed up the work.

TROUBLESHOOTING

1. If your power tool does not start, check the plug on the power supply first.
2. If your power tool work efficiency is reduced, check the lubricant level.
3. If your power tool work efficiency is reduced, check whether the chisel is blunt.

MAINTENANCE



WARNING! Remove the plug from the socket before carrying out any adjustment, servicing or maintenance.

There are no user serviceable parts in your power tool. Never use water or chemical cleaners to clean your power tool. Wipe clean with a dry cloth. Always store your power tool in a dry place. Keep the motor ventilation slots clean. Keep all working controls free of dust. Occasionally you may see sparks through the ventilation slots. This is normal and will not damage your power tool.

If the supply cord is damaged, it must be replaced by the manufacturer, its service agent or similarly qualified persons in order to avoid a hazard.

ENVIRONMENTAL PROTECTION



Waste electrical products must not be disposed of with household waste. Please recycle where facilities exist. Check with your local authorities or retailer for recycling advice.

PLUG REPLACEMENT (ONLY FOR REWIRABLE PLUG OF UK & IRELAND)

If you need to replace the fitted plug then follow the instructions below.

IMPORTANT

The wires in the mains lead are colored in accordance with the following code:

Blue = Neutral

Brown = Live

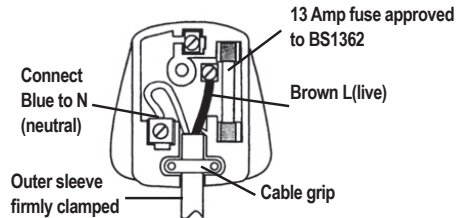
As the colors of the wires in the mains lead of this appliance may not correspond with the colored markings identifying the terminals in your plug, proceed as follows. The wire which is colored blue must be connected to the terminal which is marked with N. The wire which is colored brown must be connected to the terminal which is marked with L.



WARNING:

Never connect live or neutral wires to the earth terminal of the plug. Only fit an approved 13A BS1363/A plug and the correct rated fuse.

Note: If a moulded plug is fitted and has to be removed take great care in disposing of the plug and severed cable, it must be destroyed to prevent engaging into a socket.



DECLARATION OF CONFORMITY

We,
Wickes Building Supplies Limited

Declare that this product: BREAKER

Description and SKU code: 223725

Complies with the following Directives and Regulations:

2006/42/EC, Machinery Directive

2014/30/EU, Electromagnetic Compatibility Directive

2011/65/EU & (EU)2015/863 (RoHS), Restriction of Hazardous Substances Directive

2000/14/EC amended by 2005/88/EC:

- Conformity Assessment Procedure as per

- Measured Sound Power Level

- Declared Guaranteed Sound Power Level

Annex VI

103.87 dB

105 dB

and conforms to the following standards:

Standards specific to this product:

EN 60745-1

EN 60745-2-6

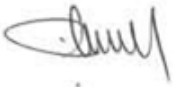
EN ISO 3744

EN 55014-1

EN 55014-2

EN 61000-3-2

EN 61000-3-3



28th January, 2021

Philip Ansell

Category Technical Manager

Wickes

Vision House

19 Colonial Way

Watford

WD24 4JL"

Customer Helpline 0345 2005409