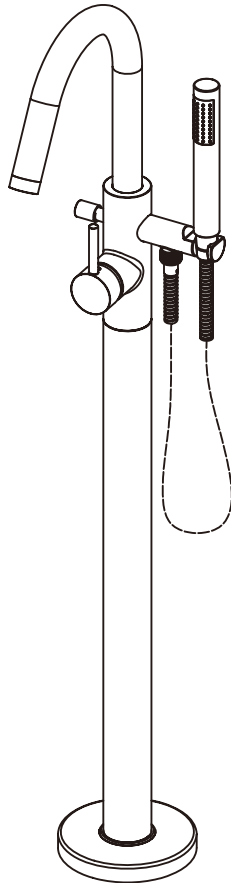


Free stand Bath Shower Mixer

Fitting instructions

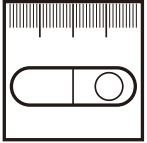
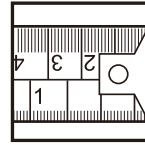
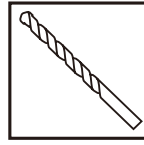


**Please note: Tap head shown is for illustration purposes only.
Please keep these instructions for future reference and request of replacement parts.**

We have taken great care to ensure that this product reaches you in perfect condition. However should any parts be damaged or missing please contact your point of purchase. This does not affect your statutory rights. In addition if you require replacement parts your point of purchase will be happy to assist.

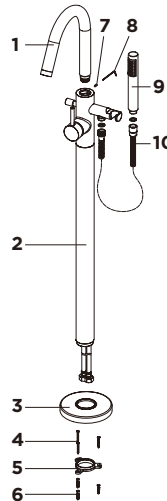
Contents	Page
1. Tools required	3
2. Parts Supplied	3
3. Specifications	3
4. Installation	4-7
5. Aftercare	8

Tools required (Tools not supplied)



Parts Supplied

NO.	Description	Qty
1	Spout	1
2	tap assembly	1
3	Cover	1
4	Wall screw	3
5	Rail bracket	1
6	Wall plug	3
7	Grub screw	1
8	Allen key	1
9	Handset	1
10	Shower hose	1



Specifications

The taps is suitable for use at water supply pressures of 0.5 bar (min.) to 5 bar (max.).

This pressure rating is determined by the manufacturer using soft water under test house conditions and may differ to the retailer's recommendation.

BS 8558 recommends hot water should be stored and distributed at a temperature of not less than 60°C which will help minimise the build-up of limescale.

For further details contact your Local Water Authority.

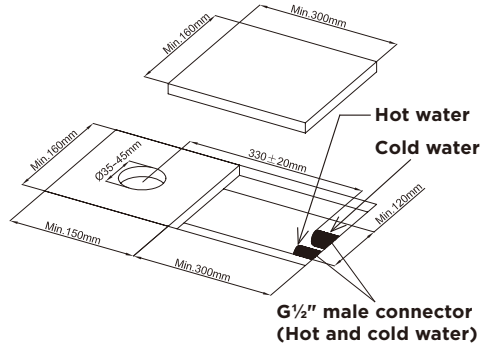
This taps should be installed in compliance with the UK Water Regulations.

(a) Identify all components and check pack contents.

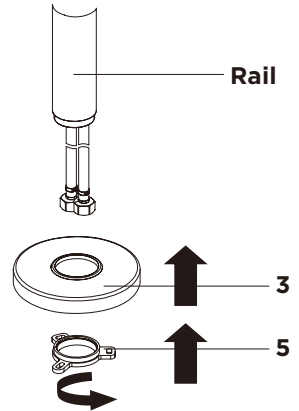
(b) Turn off water mains supply.

Installation

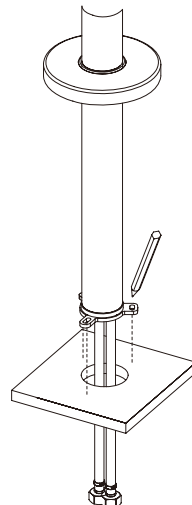
1. Prepare the recess and pipework on the floor. Please refer to the dimension drawing on the right.
2. Prepare 2 boards for fixing mixer body and pipework. Please refer to the dimension drawing on the right.



3. Place the cover(3) to the rail of the tap assembly, screw the rail bracket(5) to the thread of the rail until securely.

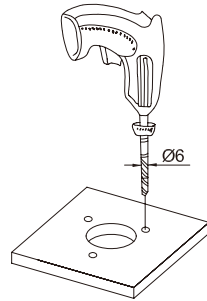


4. Fit this assembly to board and mark screw holes.



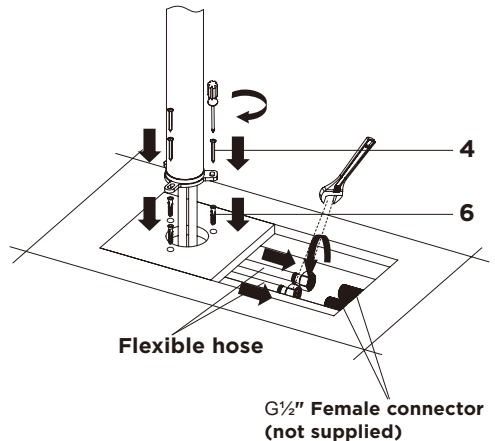
5. Drilling 3 holes on the board.

Note: Only one of the board is need to drill.



6. Secure this assembly to board using wall screw (4, if suitable) and wall plug (6, if suitable).

7. Connect the flexible hose to hot and cold supplies. Do not over tighten.

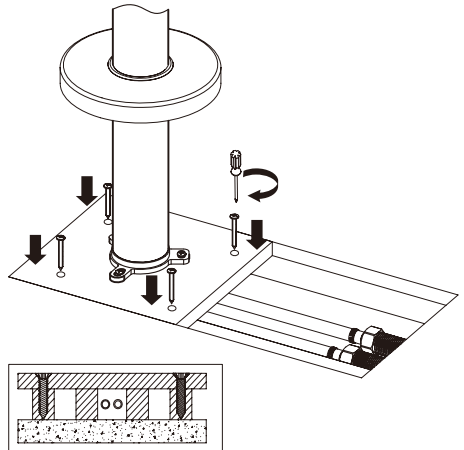


8. Secure board to the floor.

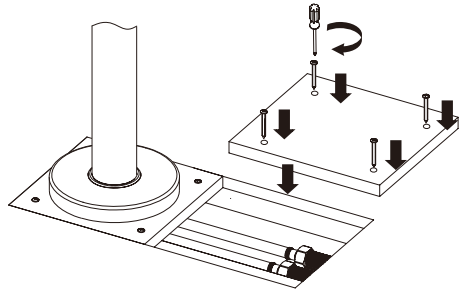
Important - Use appropriate fixings suitable for floor type/construction. Drill holes to suit required fixings (Use wall plugs if suitable).

Note: do not overbend the flexible hose during installation.

9. Turn on the water supply and check for leaks on connection points.

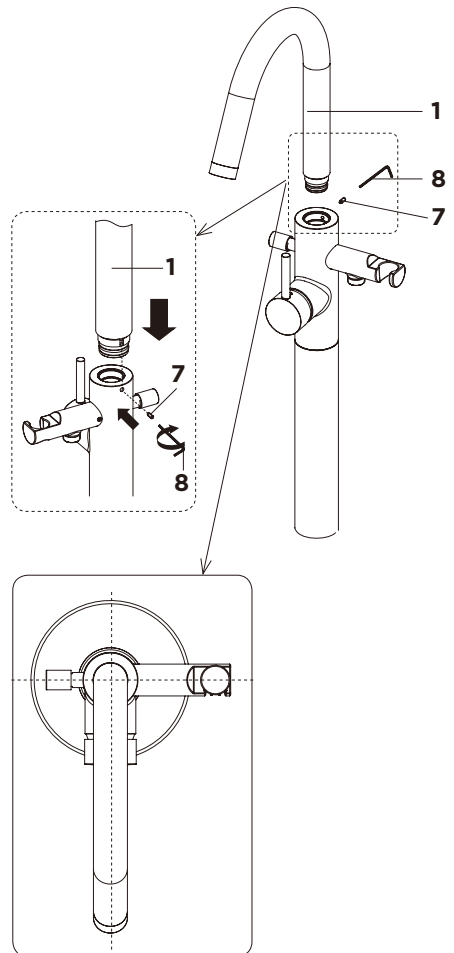


10. If watertight, Secure other board to the floor.

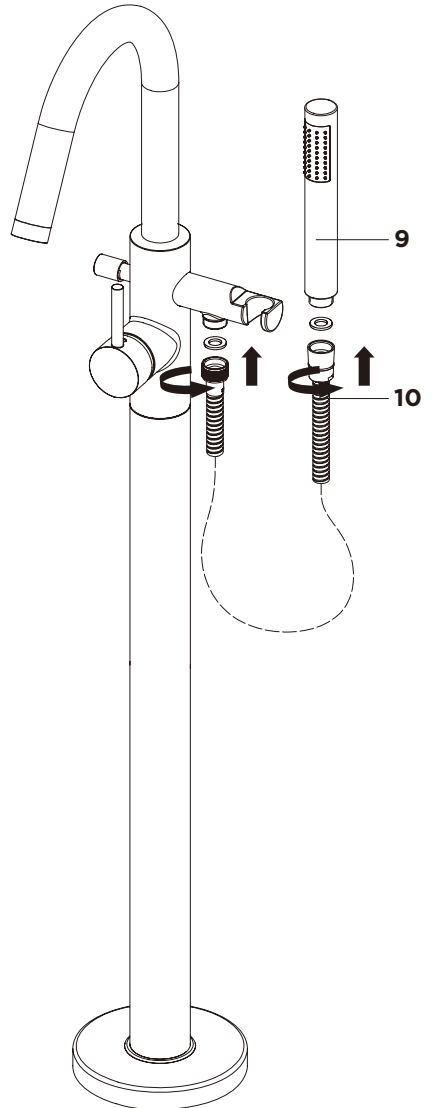


11. Gently push the spout(1) into the mixer body. See diagram on the right.

12. Screw the grub screw(7) to mixer body and tighten using an allen key(8).



13. Ensuring the hose washer is in position, attach the conical end of the shower hose(10) to handset(9) and tighten.
DO NOT OVER TIGHTEN.
Ensuring the hose washer is in position, attach the non-conical end of the shower hose(10) to outlet of the mixer body.
Then place the shower hose(10) in the handset holder.



Aftercare

Cleaning the cartridge (if water dripping from tap)

Before carrying out any maintenance, turn off the mains water supply. If unsure contact a qualified tradesman.

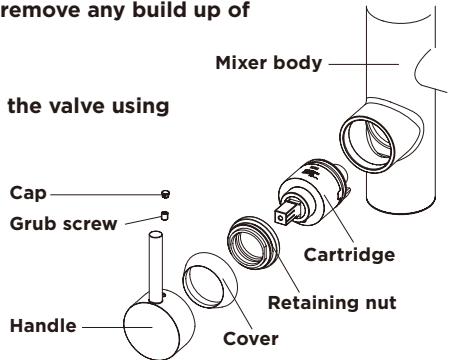
Remove the cap, grub screw, handle and cover.

Remove the retaining nut using a suitable spanner, pull the cartridge from the mixer body, clean thoroughly under cold water to remove any build up of limescale or debris.

If necessary replace the cartridge.

Replace the cartridge into the body, tighten the valve using a suitable spanner.

Replace retaining nut, cover and handle, tighten the grub screw and re-fit cap to handle.

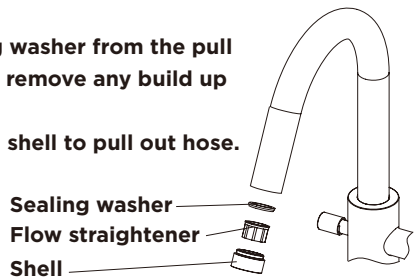


Cleaning the flow straightener (if no flow or low flow rate)

Before carrying out any maintenance, turn off the mains water supply. If unsure contact a qualified tradesman.

Remove the shell, flow straightener and sealing washer from the pull out hose, clean thoroughly under cold water to remove any build up of limescale or debris.

Re-fit the flow straightener, sealing washer and shell to pull out hose.



General cleaning

Whilst modern plating techniques are used in the manufacture of these fittings, the plating will wear if not cleaned properly. The safest way to clean your product is to wipe with a soft damp cloth. Stains can be removed using washing up liquid.

All cleaning powders and liquids will damage the surface of your fitting even the non-scratch cleaners.