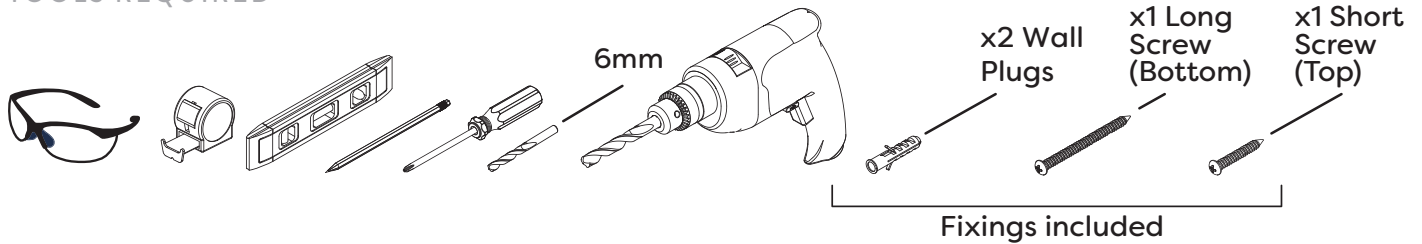


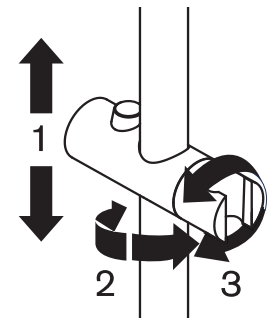
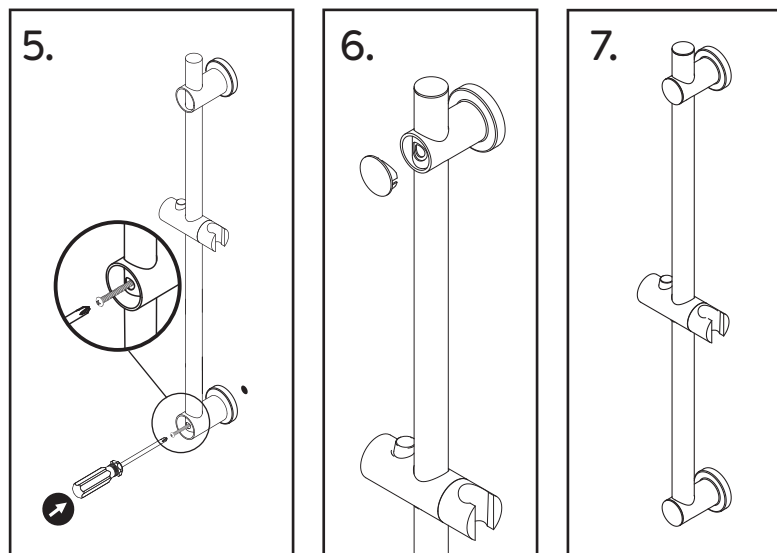
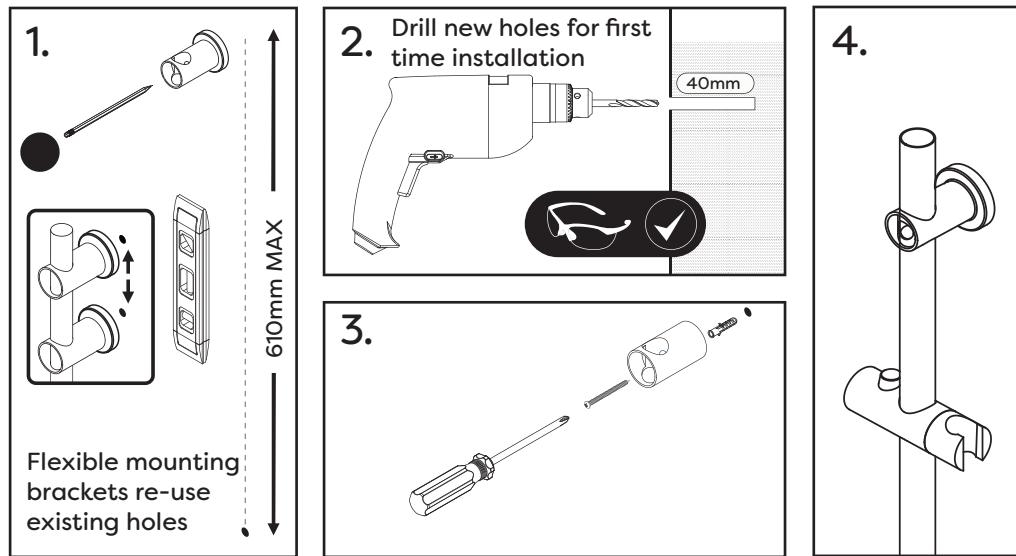
229464 | INSTRUCTION LEAFLET

AM400541WKK - ONE FUNCTION SHOWER KIT & RISER RAIL

TOOLS REQUIRED



INSTALLATION - RISER RAIL



EASY TO ADJUST

1. Compress the button on the riser bracket to adjust the height of the shower handset.
2. Compress the button on the riser bracket to move the shower handset to face right, left or to the centre.
3. Adjust the angle of the shower handset once positioned in the riser rail.

INSTALLATION - SHOWER HOSE & HANDSET


1. Ensure threads on shower and shower handset are clean.
2. Position the washers supplied into the connectors of the shower hose and attach it to the shower head and shower unit. Do not over tighten; finger tight only.

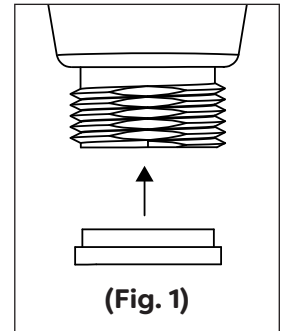
WATER SAVING FEATURE

• This shower handset is supplied with an optional water saving device which reduces water usage. The water saving device saves 50% of water usage. Flow rate reduction calculated is based on comparing water usage with and without the flow regulator at 3 bar water pressure. By reducing water volume but not water pressure, an invigorating shower can still be enjoyed. Simply insert the water saving device supplied into the handset connector during installation. This device can be removed at any time if required.

• **This shower handset can be used in high pressure systems but must have the flow limiter fitted above 1 bar.**

• **Ensure the device is fitted into the handset in the correct orientation (Fig. 1).**

 **• IMPORTANT: DO NOT use the water saving device with electric showers as this may cause overheating, damage and scalding.**



EASY CLEAN

• This shower handset features rub clean nozzles which are easy to unblock helping to keep limescale build up to a minimum. To clean, simply rub the surface of the shower handset gently in a clockwise direction with your thumb to break away any hard water deposits which could affect the shower's performance.

GENERAL SAFETY ADVICE

- Always take care when using hot water, especially with children, and NEVER leave a child unattended in the bathroom.
- Do not use with water above 65°C or with excessively high water pressure (max 50psi/3.5bar).
- Always check the water temperature before using the shower to avoid the risk of scalding.
- Always take care when using power tools, particularly if there is any water in the working area.
- Always use eye protection when using power tools.
- Always check for hidden cables and pipework before drilling.
- When drilling into a tiled surface do not use a hammer drill.
- Always use a drill bit that is suitable for the surface that is being drilled.
- Do not use this product as a grab bar.

GENERAL CLEANING

• Do not use aggressive cleaning products or polishes or those which contain bleach, acids or alcohol as this may damage the surface of the product. Whilst modern plating techniques are used in the manufacture of these fittings, the plating will wear if not cleaned properly. The safest way to clean your product is to wipe with a soft damp cloth. Stains can be removed using washing up liquid.

GUARANTEE TERMS: In the unlikely event that this product does not meet your expectations or a quality issue arises, please contact your point of purchase with the details and your proof of purchase. We reserve the right to carry out a product inspection prior to validating a claim. The product carries a 1 year guarantee which covers against manufacturing defects. The guarantee does not cover deterioration through normal wear and tear, deterioration due to infestation, wilful damage, accident, improper or negligent use, unauthorised modification or repair, or incorrect storage. During the guarantee period for the product, we will, at our discretion, repair or replace the product, or the defective part, subject to the guarantee exclusions set out above and your claim being validated.