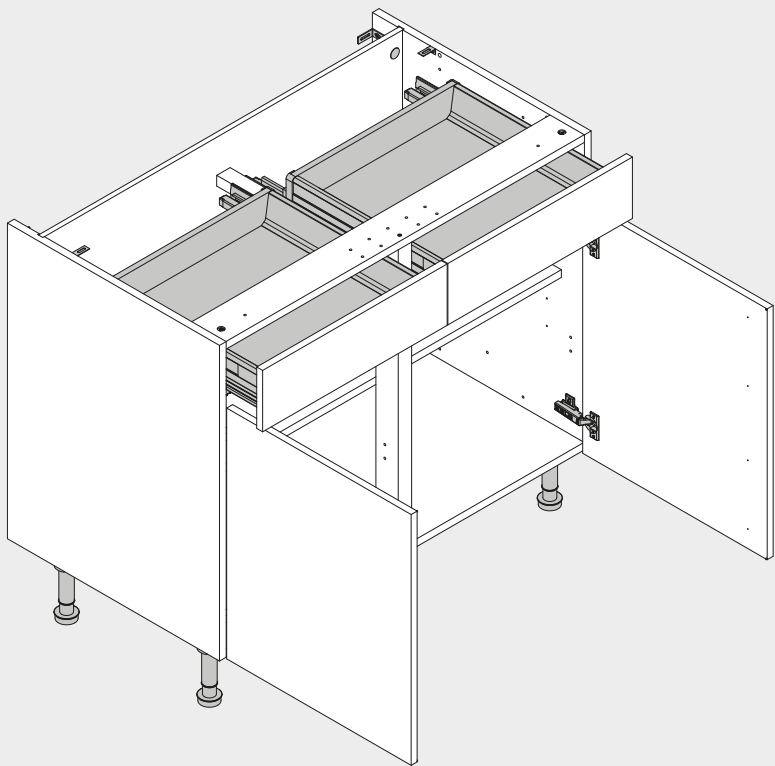
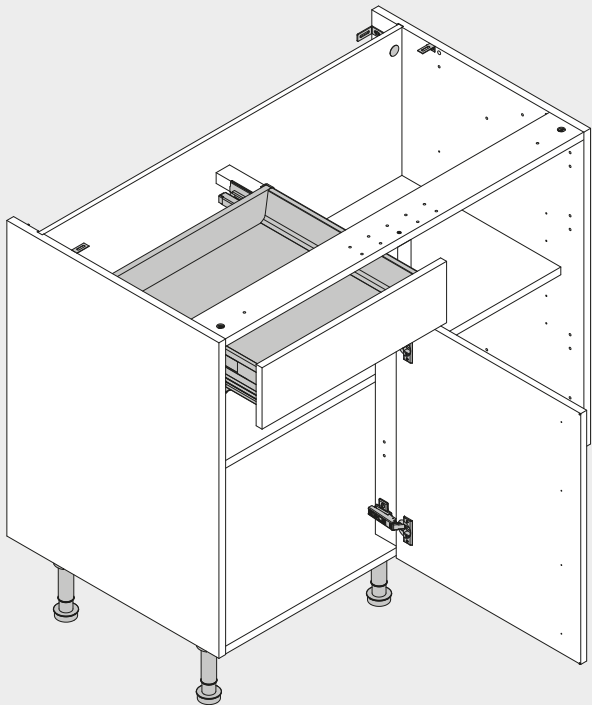
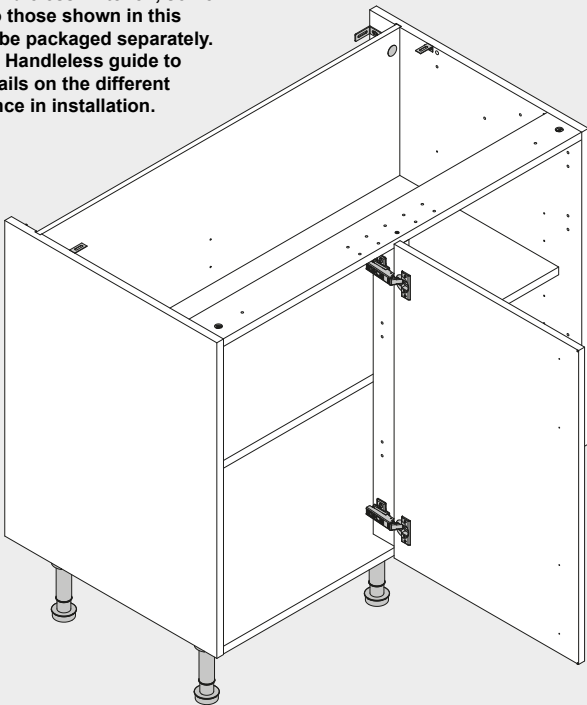
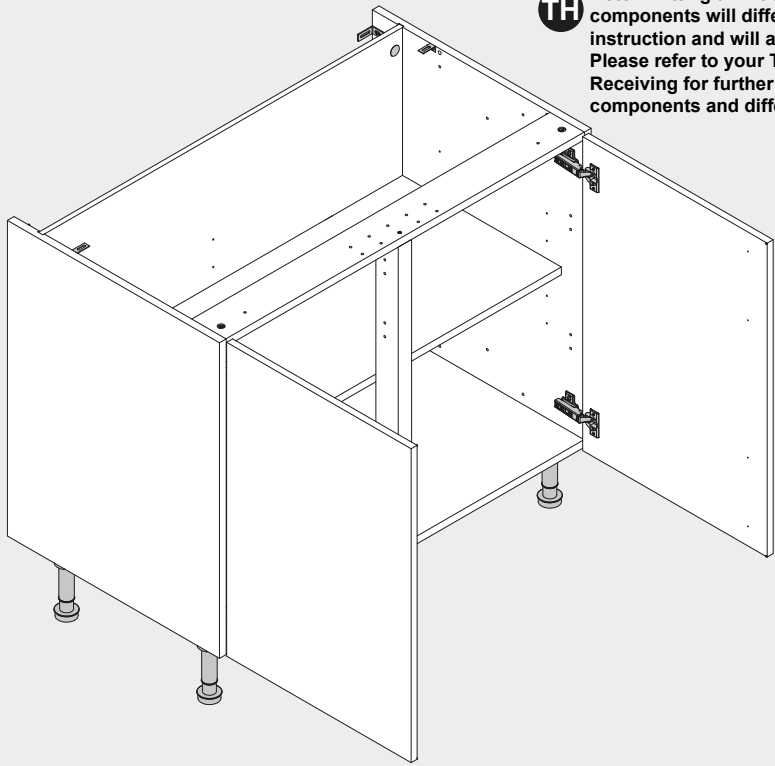


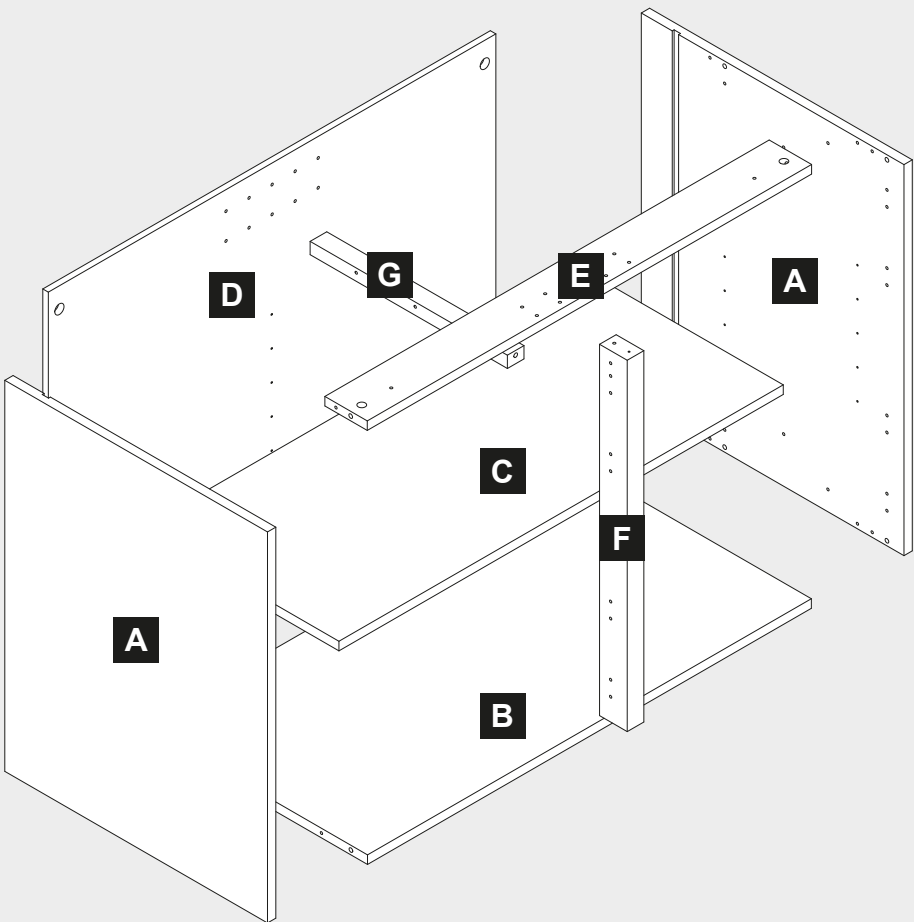
800, 900 and 1000 Base and Corner Base Unit Assembly



Note: If fitting a “True Handleless” kitchen, some components will differ to those shown in this instruction and will also be packaged separately. Please refer to your True Handleless guide to Receiving for further details on the different components and difference in installation.



Components



Important Information - True Handleless Kitchens Installers: See Note Above

Caution: Some pieces of hardware could be hazardous to small children. Keep all these items out of reach and do not leave children unattended in the assembly area.

Please read these instructions carefully before proceeding. Refer to the Guide to Receiving and Installing your Kitchen booklet for further information.

Note: Due to variation in wall conditions no screws are supplied for fixing the units to the wall. If in doubt consult an expert. Assemble the unit on a clean solid work surface.

In the interest of continuing improvements we reserve the right to amend or adjust the specifications without prior notice. Errors and omissions excepted.

These units may be fitted with a drawer system. The drawers are supplied separately. These instructions show the runner positions for the drawer system.

Follow the instructions supplied with the drawers for drawerbox assembly.

Every effort has been made to ensure that this product leaves the factory in perfect condition. In the unlikely event that an item is damaged or incorrect, please contact the customer services department.

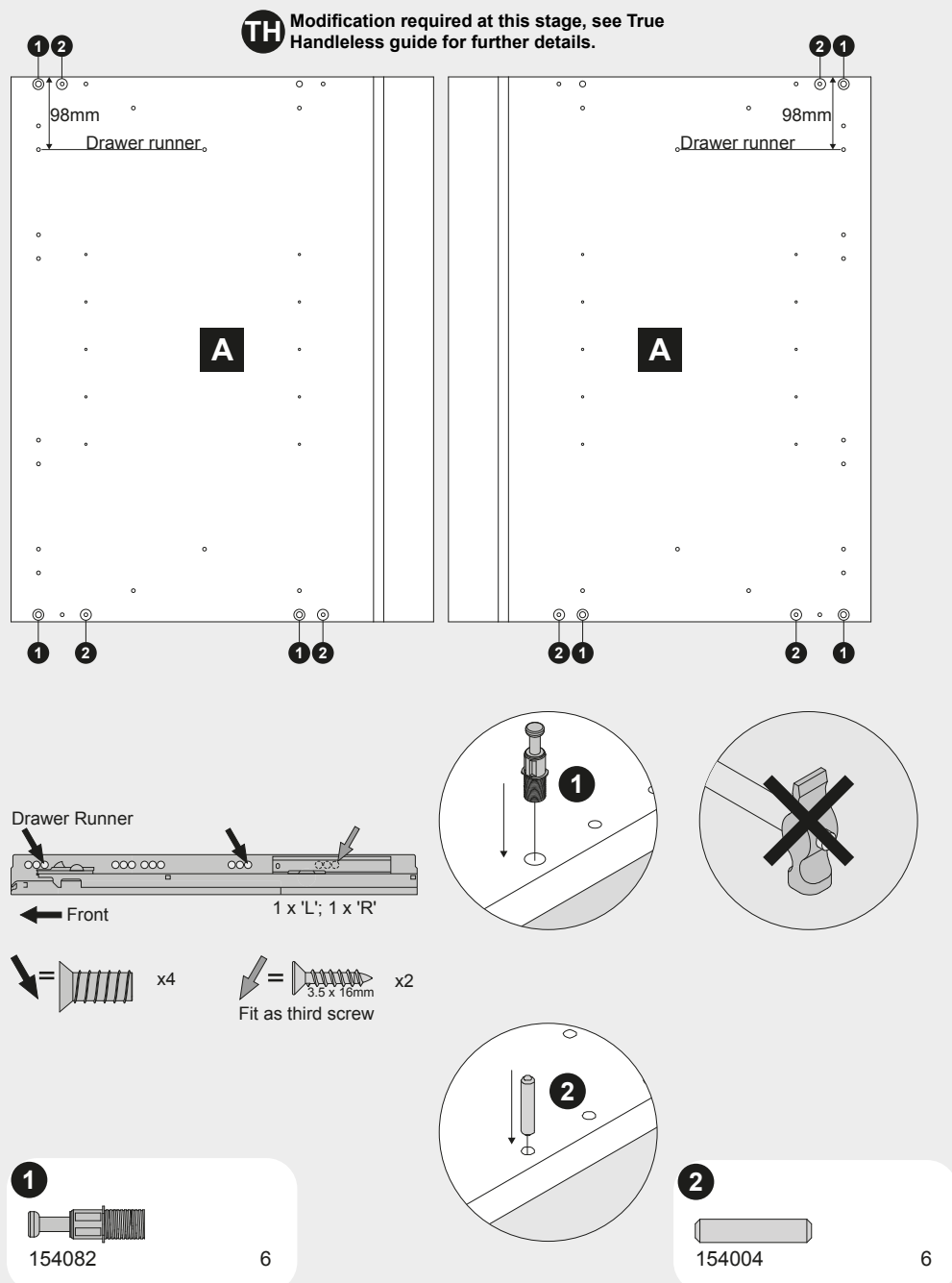


FM 665131

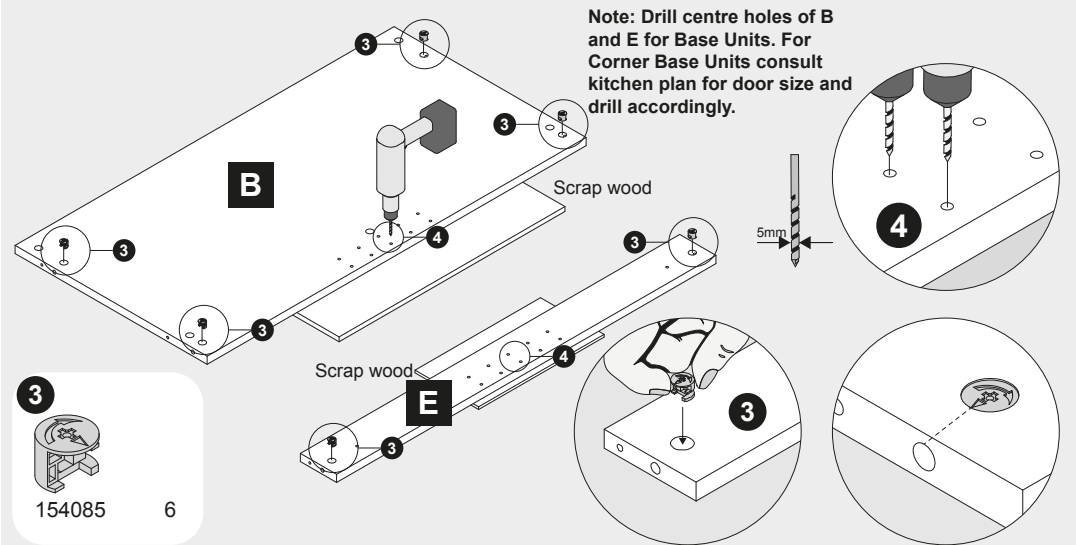
Note - Fitting Handles: (1) Decide where you are going to position each handle to maintain symmetry around your kitchen. (2) Measure the handle centres and mark off each door/drawer position. (3) Drill through the door/drawer using a fine drill (<2.5mm), then drill back from the rear face using a 4.5mm drill. (4) Attach with the fixings provided with your handle.

Ref. No.	Item	Quantity	Ref. No.	Item	Quantity	Ref. No.	Item	Quantity	Tools Required	
150101	3.5x12mm	14	154027		6	152401		4/5		Drill
150202	4x12mm	16	154068		8	152418		4/5		G-Clamp (pair)
150201	4x15mm	16/20	154047		2	152402		2		Medium Crosshead Screwdriver
150199	4.5x45mm	4	152181		4	152148		4		Hammer
150198	55mm Carcase Screw	3	152162		4	151999		12		Large Flathead Screwdriver
154082		6	150308		2	151500		2		Tape Measure
154084		1	150309		2					Spirit Level
154085		7								Bradawl
154004		8								

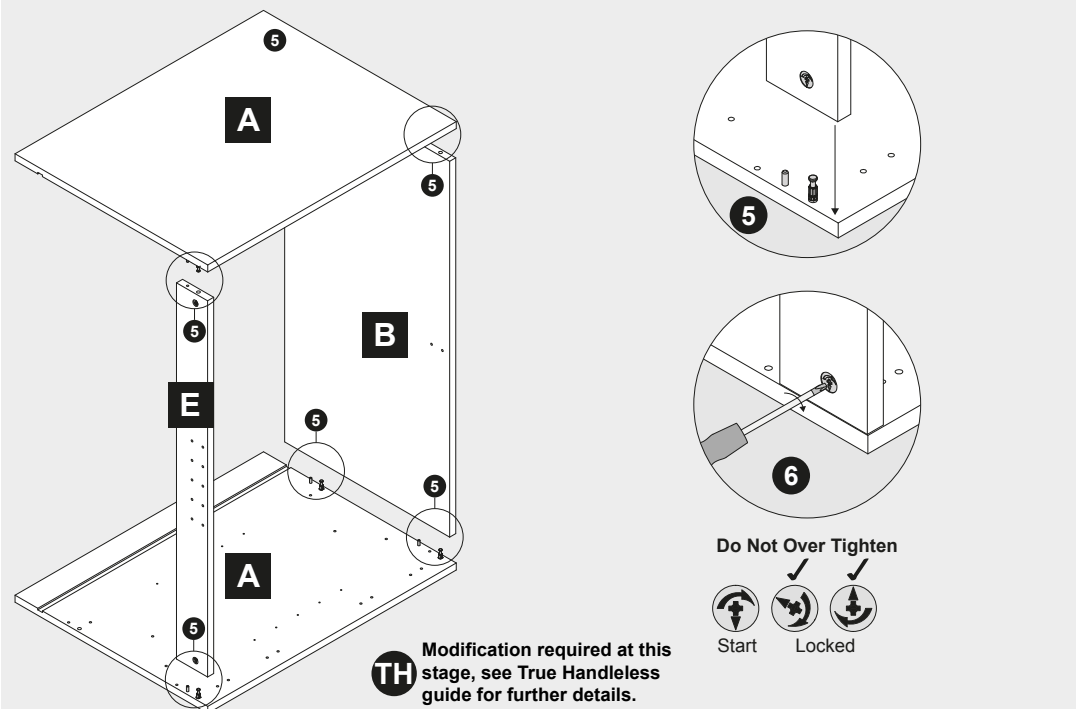
1—2 Assembly Instructions



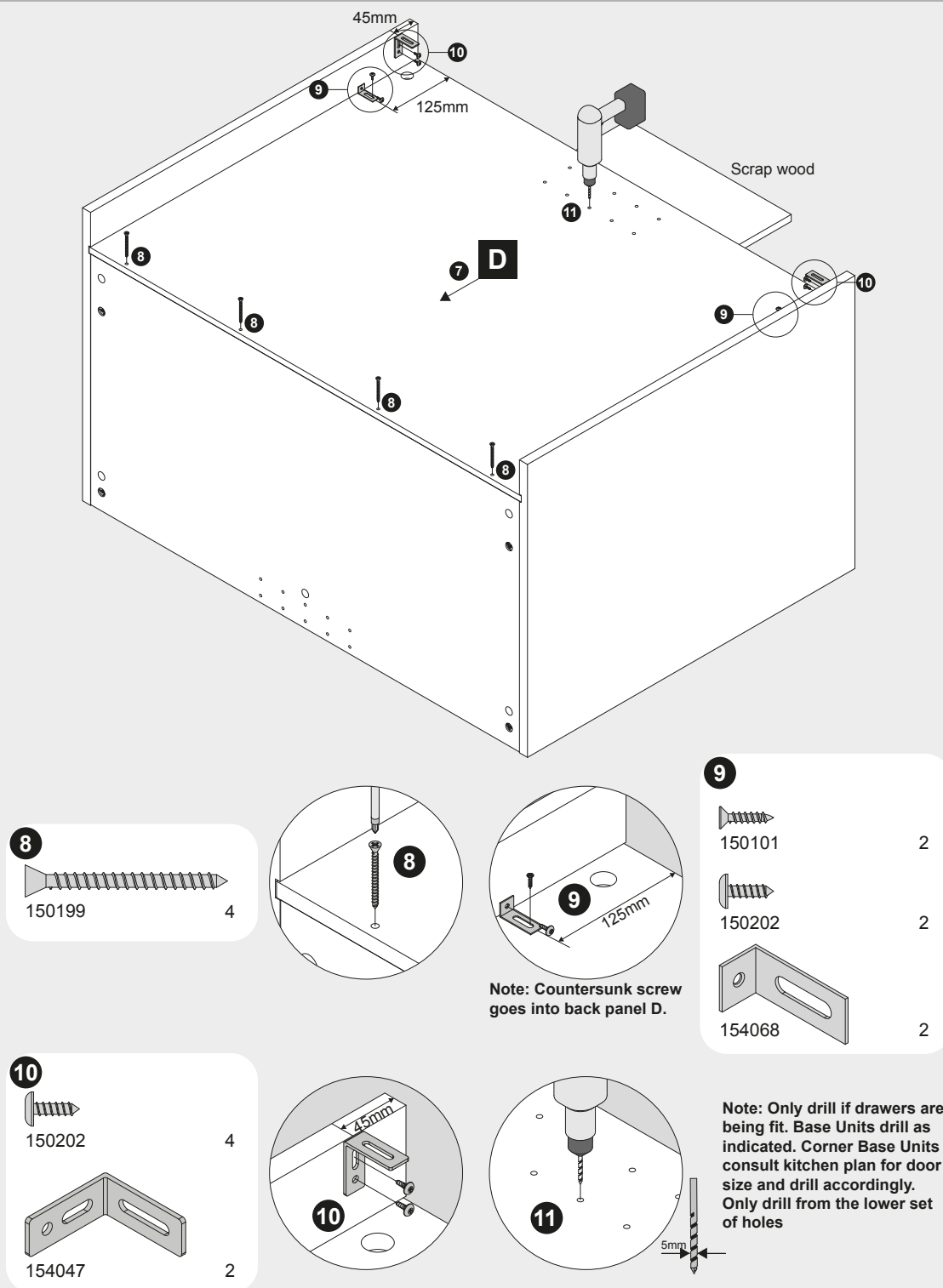
3 — 4



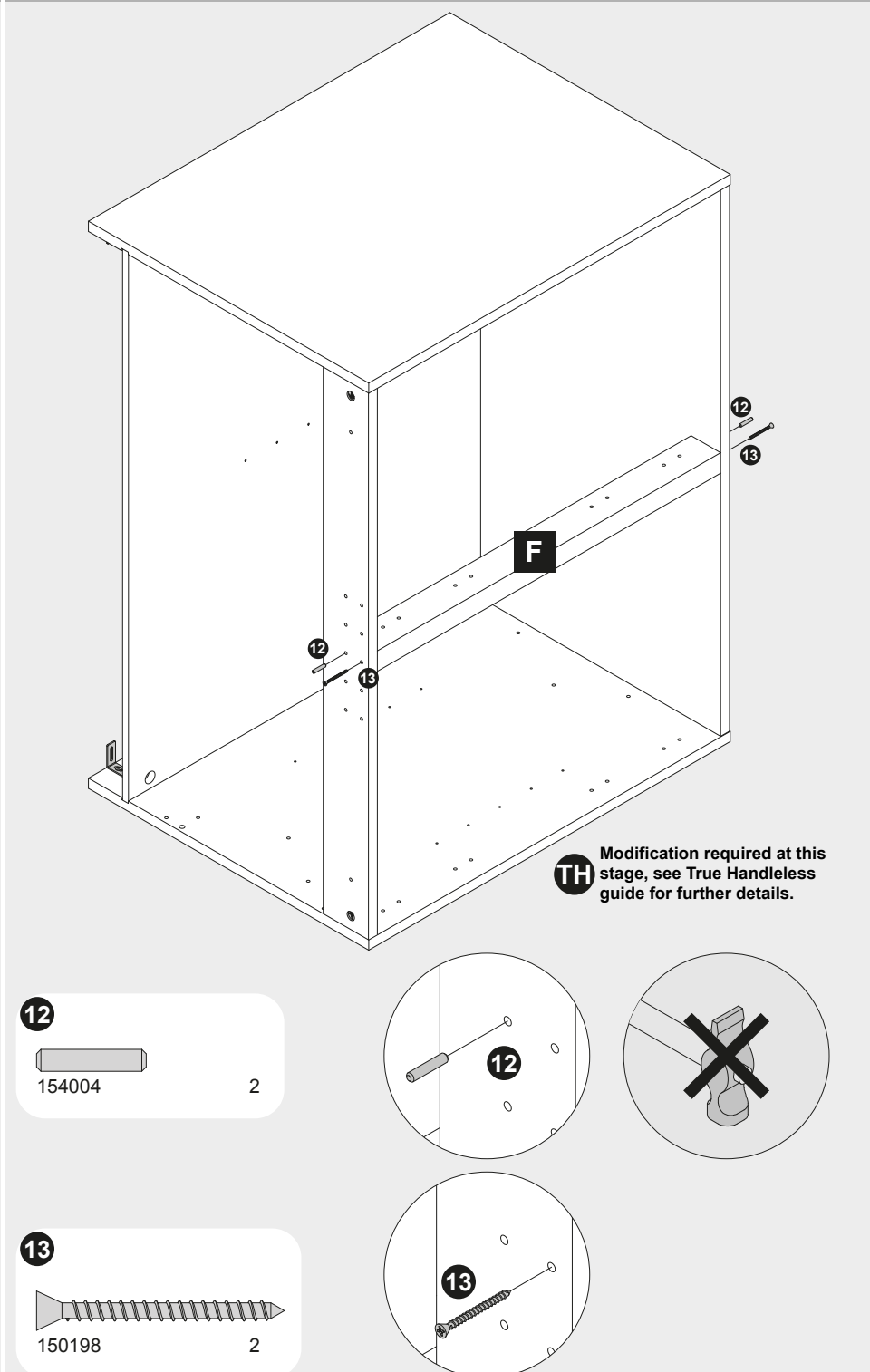
5 — 6



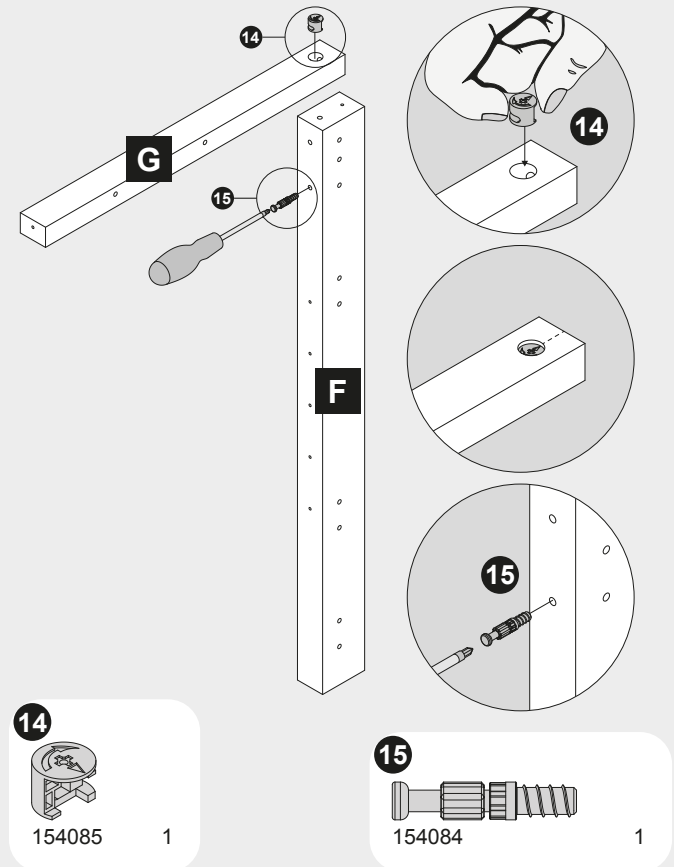
7 — 11



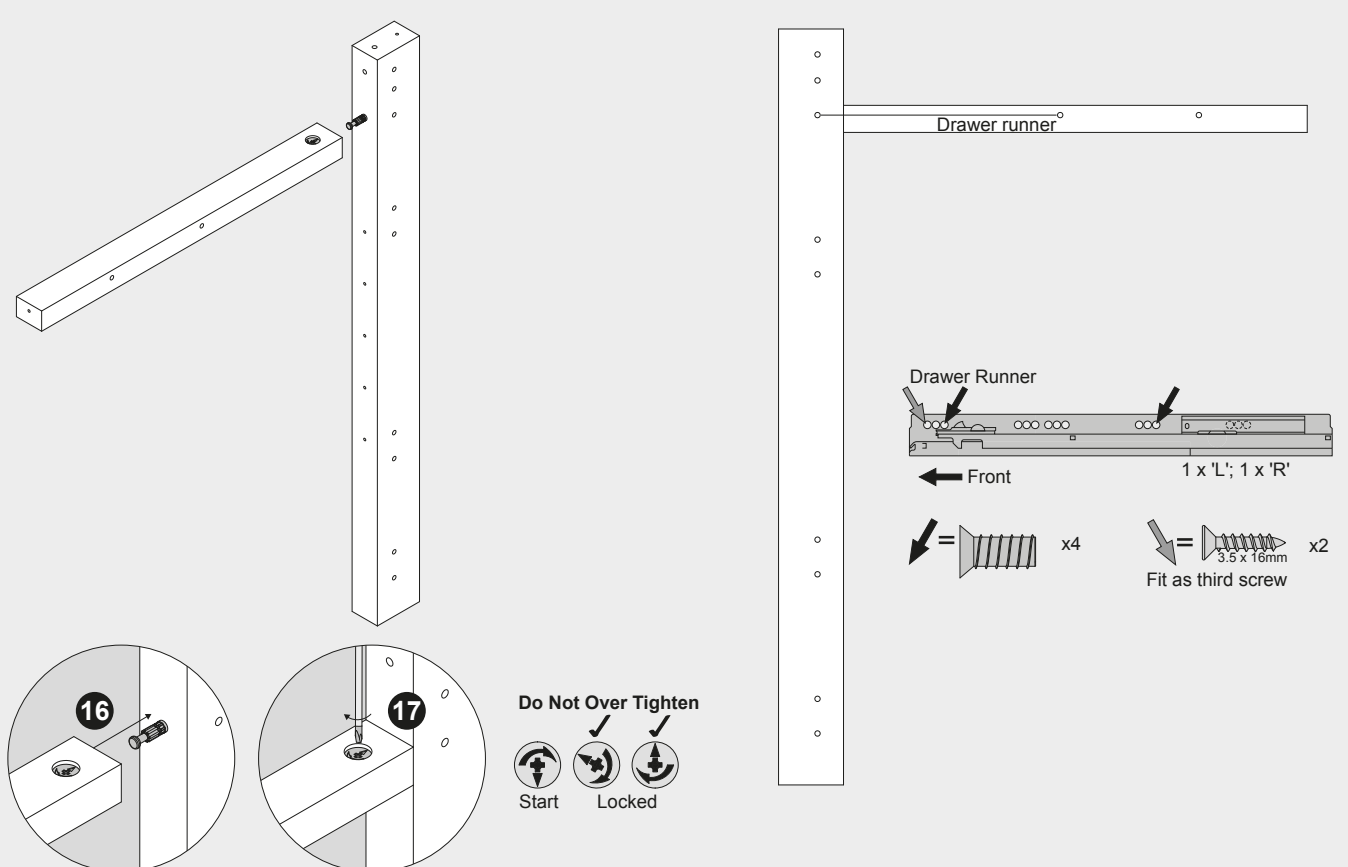
12—13 Without Drawers



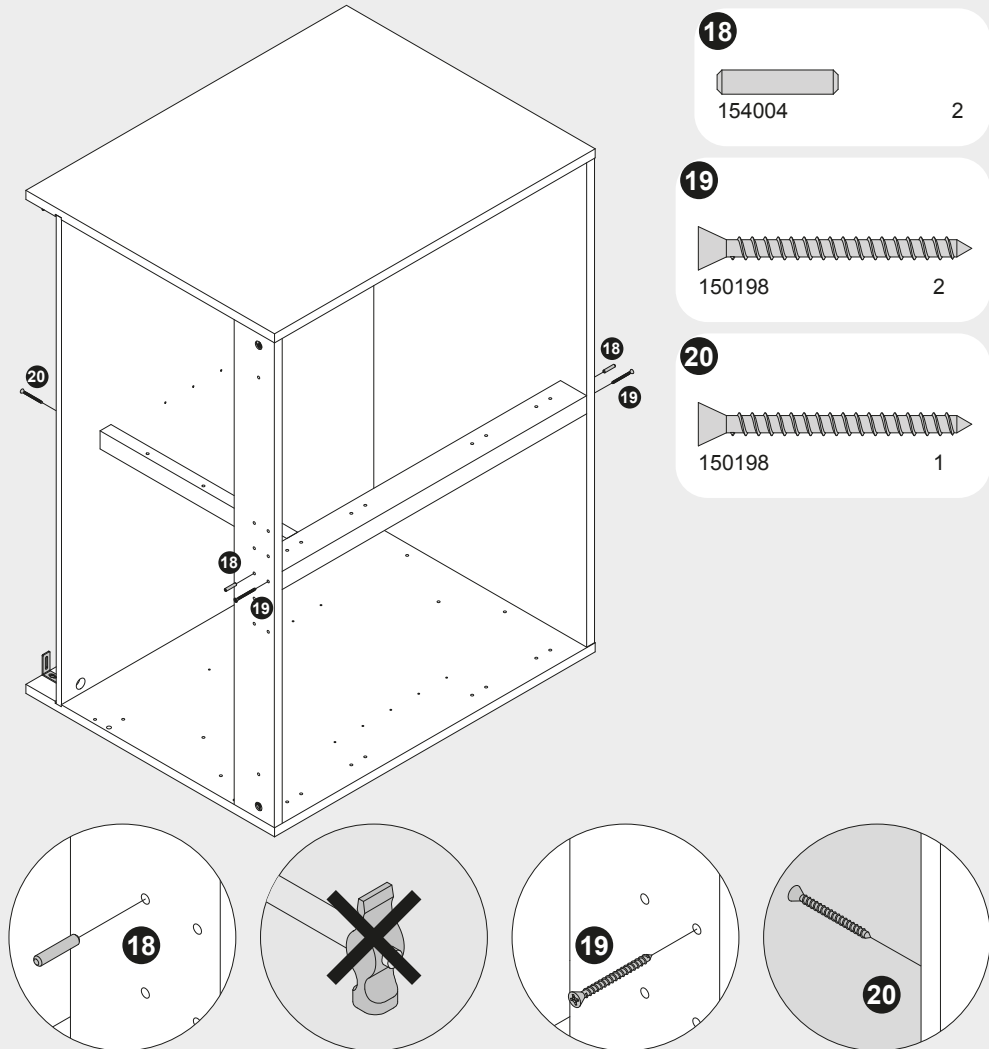
14 — 15 With Drawers



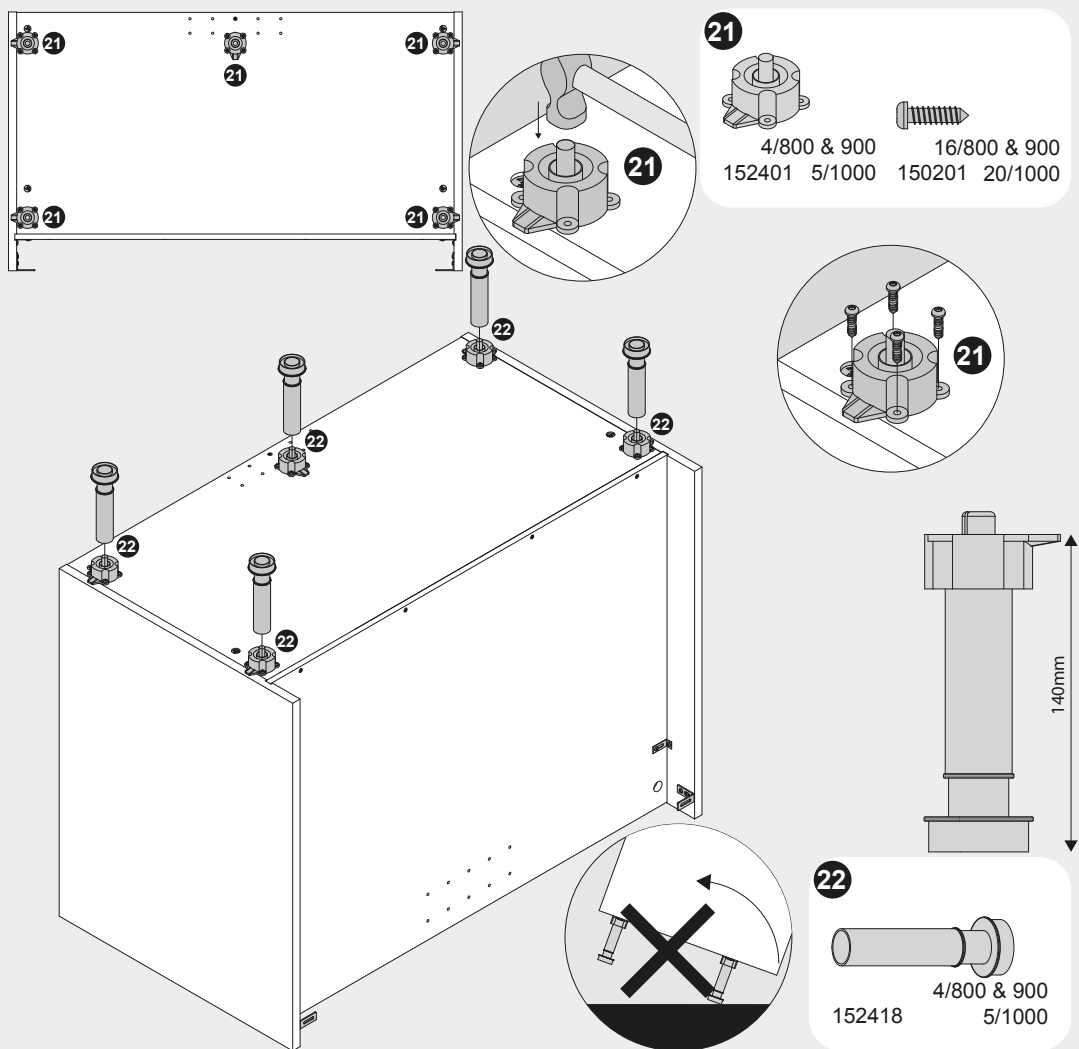
16 — 17 With Drawers



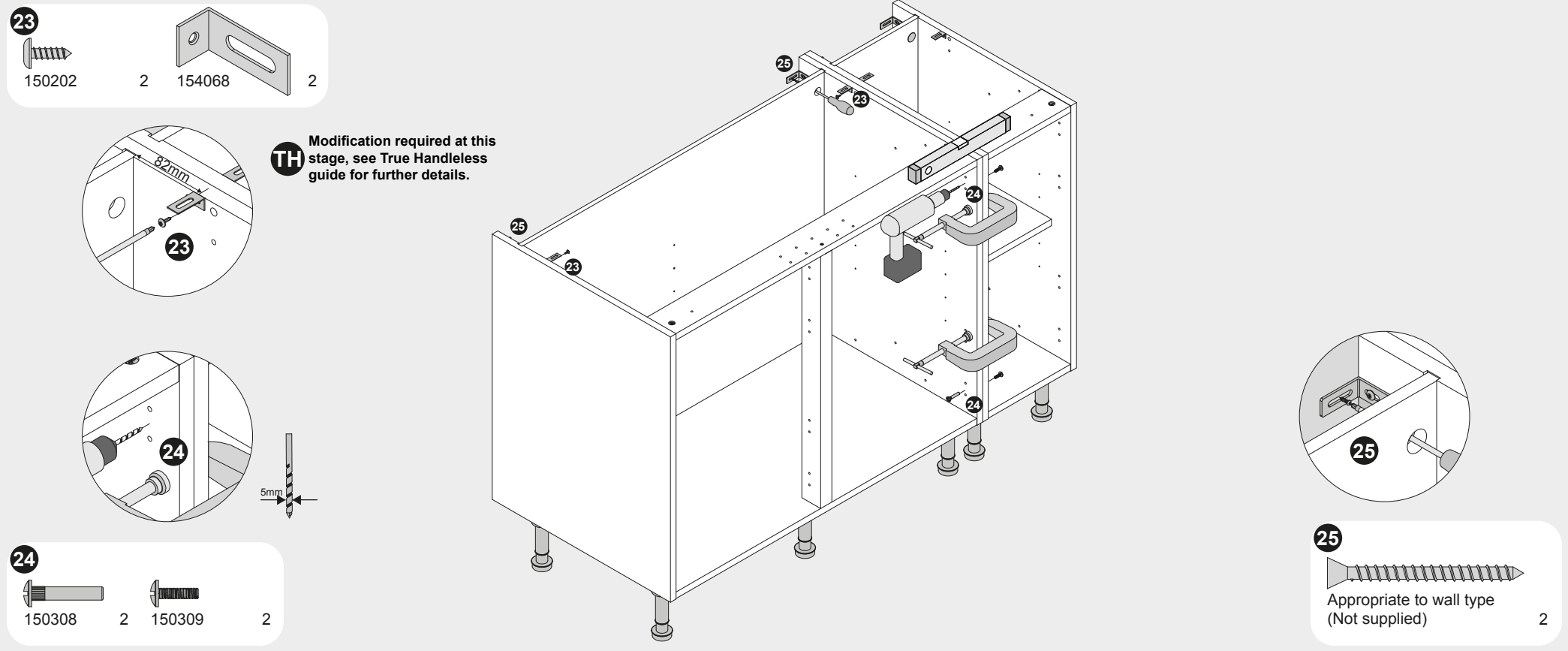
18 — 20 With Drawers



21 — 22



23 — 25 Installation Instructions



26

29

26

151500

2

27

152402

2

150101

4

28

154027

6

30

31

Note: Do not over tighten screws or use a power screwdriver.

31

150101

8

32

35

34

151999

4

35

152148

4

32

33

34

33

34

33

34

33

34

36

37

Fixed Fascia Fitting

36

150202

2/4

154068

2/4

151999

4/8

37

150202

2/4

38

Corner Post Fitting

Note: Fittings are packed with the Corner Post.

38

150124

12

154081

6

39

41

Corner Post Fitting

Modification required at this stage, see True Handleless guide for further details.

Note: Fit corner post to adjacent unit, then fit optional blanking panel to corner base unit, finally attached corner post to corner base unit mullion. Use appropriate number of screws (not supplied). Any excess/hangover does not need to be trimmed as it will be concealed in the void.

40

Not Supplied

6-10

39 41

150124

6

Unit Size (mm)	Required Door Size (mm)	Total Length in Plan (mm)	Void "x" (mm)
800mm	300	925	125
800mm	400	1025	225
800mm	500	1125	325
1000mm	400	1025	25
1000mm	500	1125	125
1000mm	600	1225	225