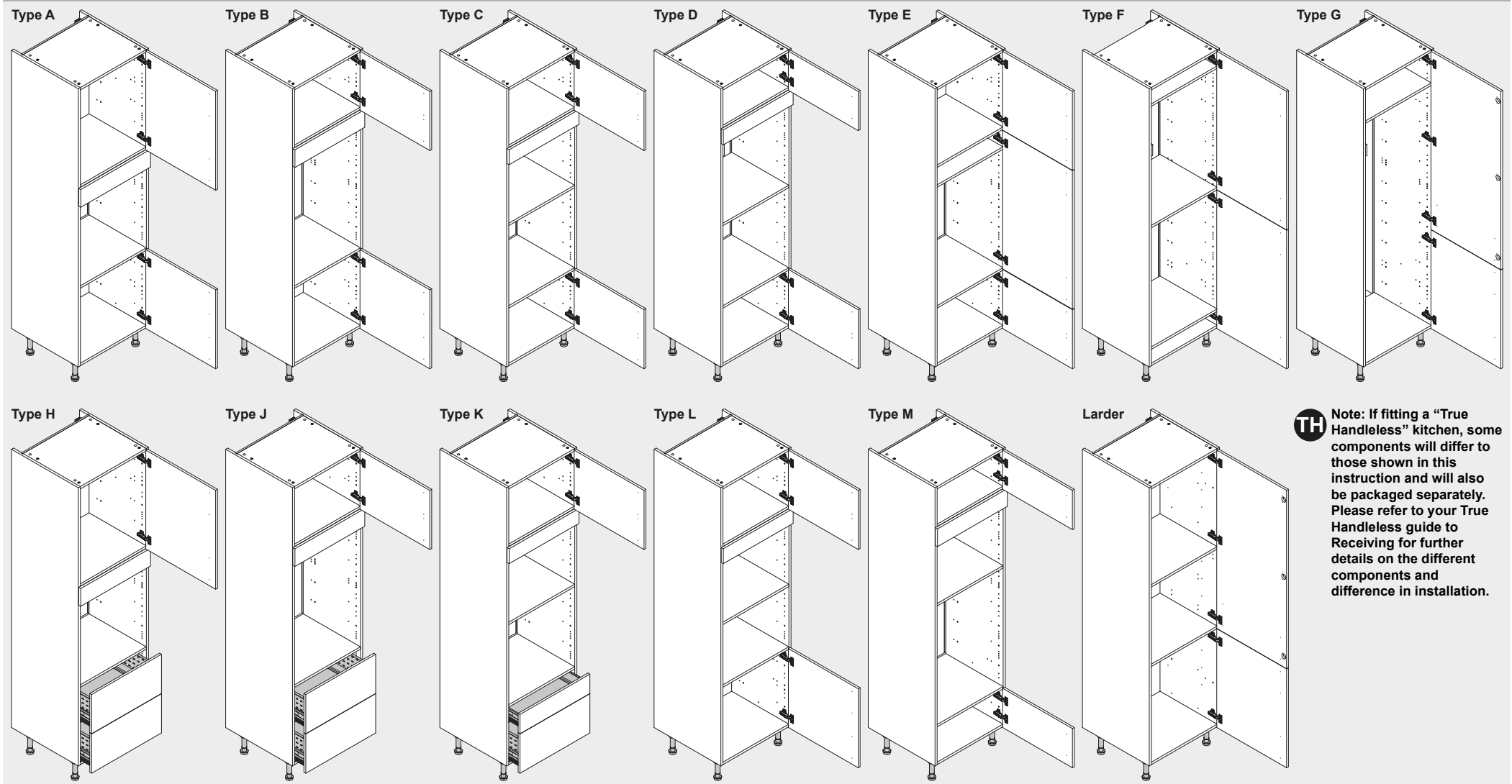


600 Appliance Housings and Larder Unit Assembly



Important Information - True Handleless Kitchens Installers: See Note Above **TH**

Caution: Some pieces of hardware could be hazardous to small children. Keep all these items out of reach and do not leave children unattended in the assembly area. Please read these instructions carefully before proceeding. Refer to the Guide to Receiving and Installing your Kitchen booklet for further information.

Note: Due to variation in wall conditions no screws are supplied for fixing the units to the wall. If in doubt consult an expert. Assemble the unit on a clean solid work surface. In the interest of continuing improvements we reserve the right to amend or adjust the specifications without prior notice. Errors and omissions excepted. These units may be fitted with a drawer system. The drawers are supplied separately. These instructions show the runner positions for the drawer system. Follow the instructions supplied with the drawers for drawerbox assembly. Every effort has been made to ensure that this product leaves the factory in perfect condition. In the unlikely event that an item is damaged or incorrect, please contact the customer services department.

Note - Fitting Handles: (1) Decide where you are going to position each handle to maintain symmetry around your kitchen. (2) Measure the handle centres and mark off each door/drawer position. (3) Drill through the door/drawer using a fine drill (<2.5mm), then drill back from the rear face using a 4.5mm drill. (4) Attach with the fixings provided with your handle.



Components

Housing Type	A	B	C	D	E	F	G	H	J	K	L	M	Larder
A	2	2	2	2	2	2	2	2	2	2	2	2	2
B	4	4	5	5	5	5	3	4	4	5	5	4	4
C	2	2	2	1	2	0	0	1	1	1	2	0	3
D	1	1	1	1	1	0	1	1	1	1	1	1	1
E	0	0	0	0	0	0	0	0	0	0	0	0	1
F	1	1	1	1	1	0	1	1	1	1	1	1	1
G	1	1	1	1	1	1	1	1	1	1	1	1	0
H	2	2	4	4	2	4	0	2	2	4	4	4	0

Tools Required

Ref. No.	Item	Quantity by Housing Type	A	B	C	D	E	F	G	H	J	K	L	M	Larder
150101	3.5x12mm		14	12	12	12	16	12	14	10	8	8	8	12	16
150202	4x12mm		6	4	4	4	4	4	4	6	4	4	4	4	6
150201	4x15mm		22	22	22	22	16	16	16	22	22	22	22	22	16
150124	4x25mm		8	8	16	16	8	16	0	8	8	8	16	16	0
150199	4.5x45mm		4	8	8	8	8	8	8	4	8	8	8	8	4
154082			16	16	20	20	20	20	12	16	16	20	20	16	16
154084			2	2	2	2	2	2	2	2	2	2	2	2	2
154085			18	18	22	22	22	22	14	18	18	22	22	18	18
154004			18	18	22	22	22	22	14	18	18	22	22	18	16
154027			0	0	0	0	0	0	0	0	0	0	0	0	12
154024			8	8	8	4	8	0	0	4	4	4	8	0	0
154014			2	2	2	2	0	0	0	2	2	2	2	2	0
154015			2	2	2	2	0	0	0	2	2	2	2	2	0

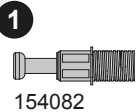
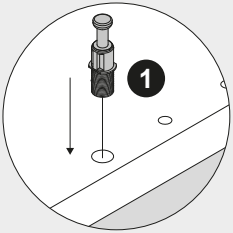
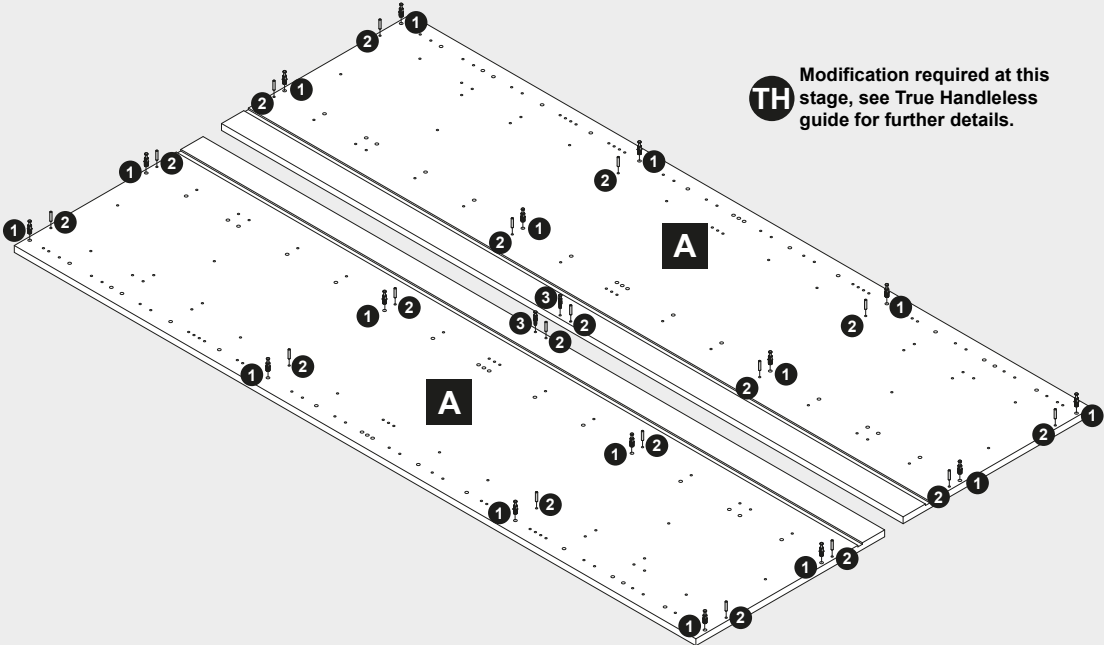
Ref. No.	Item	Quantity
152181		152162
152119		152120
152148		
151999		
154068		
151500		

Ref. No.	Item	Quantity
150308		4
150309		4
154047		2
152418		4

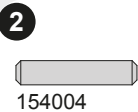
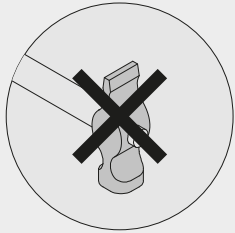
Ref. No.	Item	Quantity
152401		4
152402		2

1 — 3 Assembly Instructions

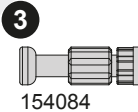
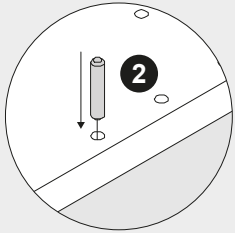
Note: Refer to specific housing type below and overleaf for exact information on shelf quantities and position. Instruction shows assembly for general appliance housing or larder, construction is same for all units unless stated.



See later

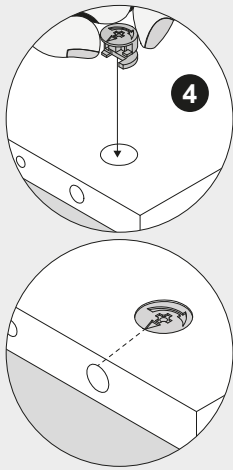
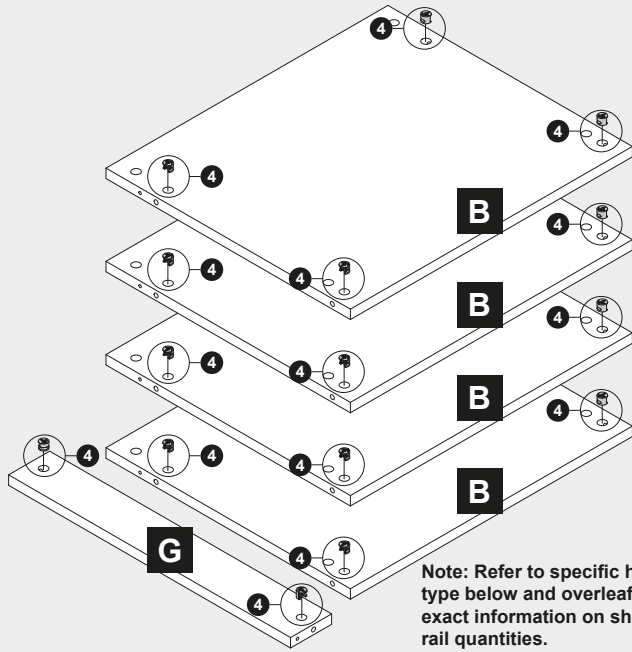


See later



See later

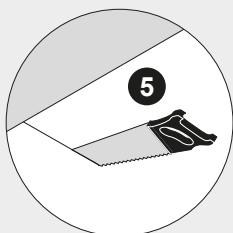
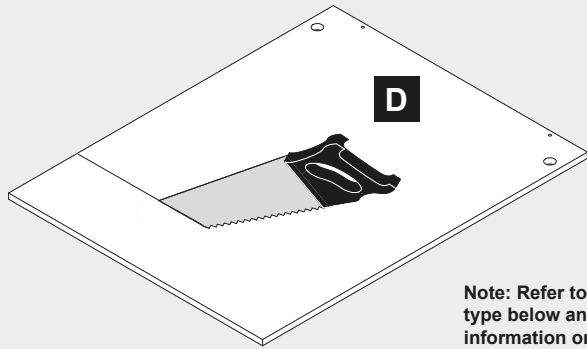
4



Note: Refer to specific housing type below and overleaf for exact information on shelf and rail quantities.

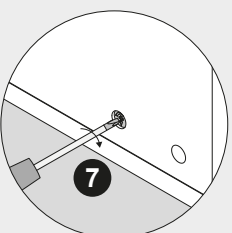
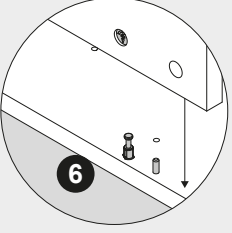
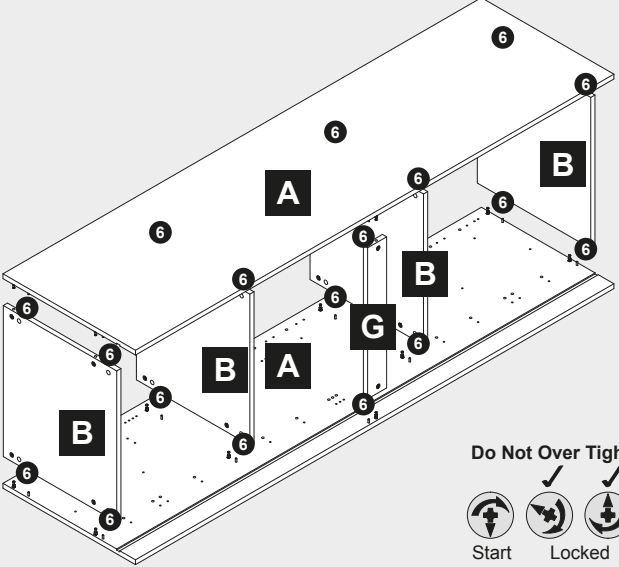
154085 See later

5



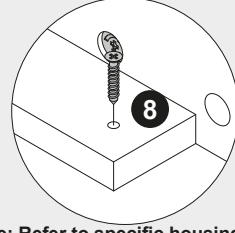
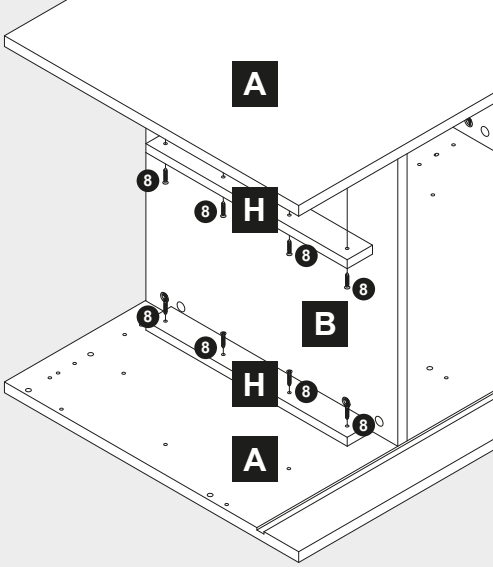
Note: Refer to specific housing type below and overleaf for exact information on back panel sizes.

6 — 7

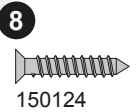


Do Not Over Tighten
Start Locked

8



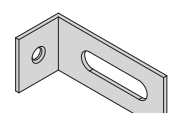
Note: Refer to specific housing type below and overleaf for exact information batten required. In some instances battens may not be possible to fit, use brackets instead.



4/Batten

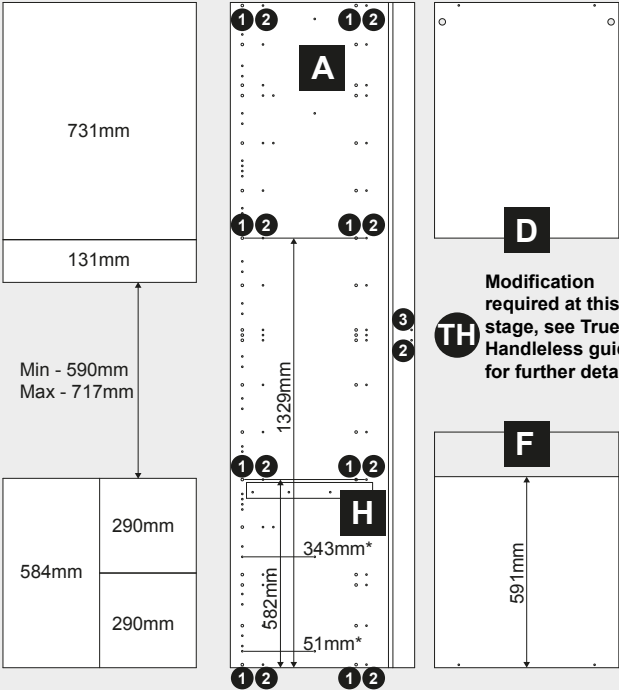


8/Shelf

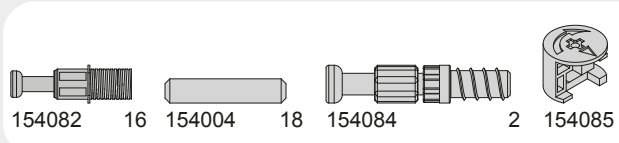
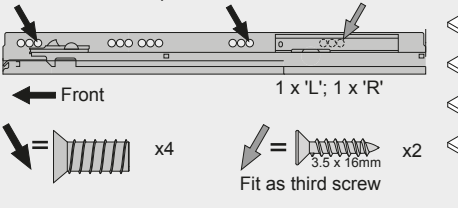


154068 4/Shelf

Housing Types A and H



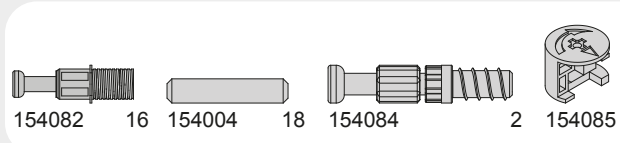
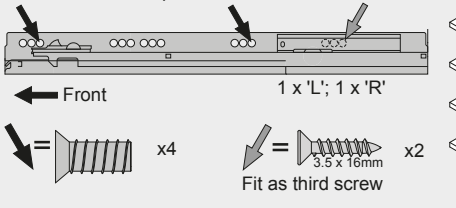
*Drawer Runners are positioned 51mm and 343mm up from bottom of the panel.



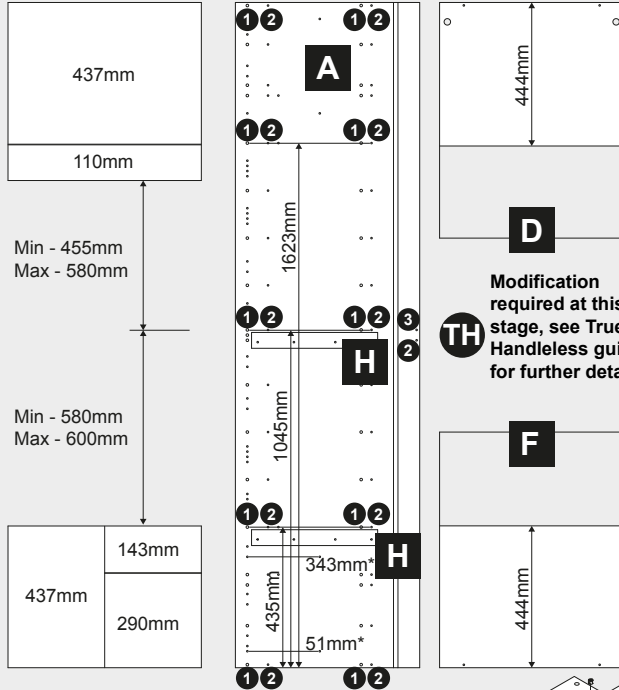
Housing Types B and J



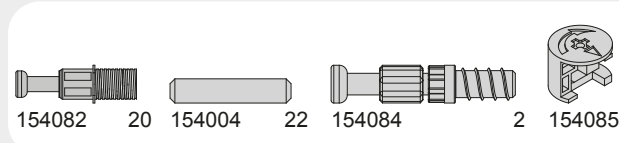
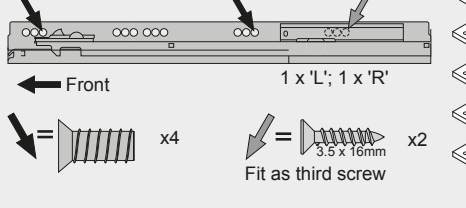
*Drawer Runners are positioned 51mm and 343mm up from bottom of the panel.



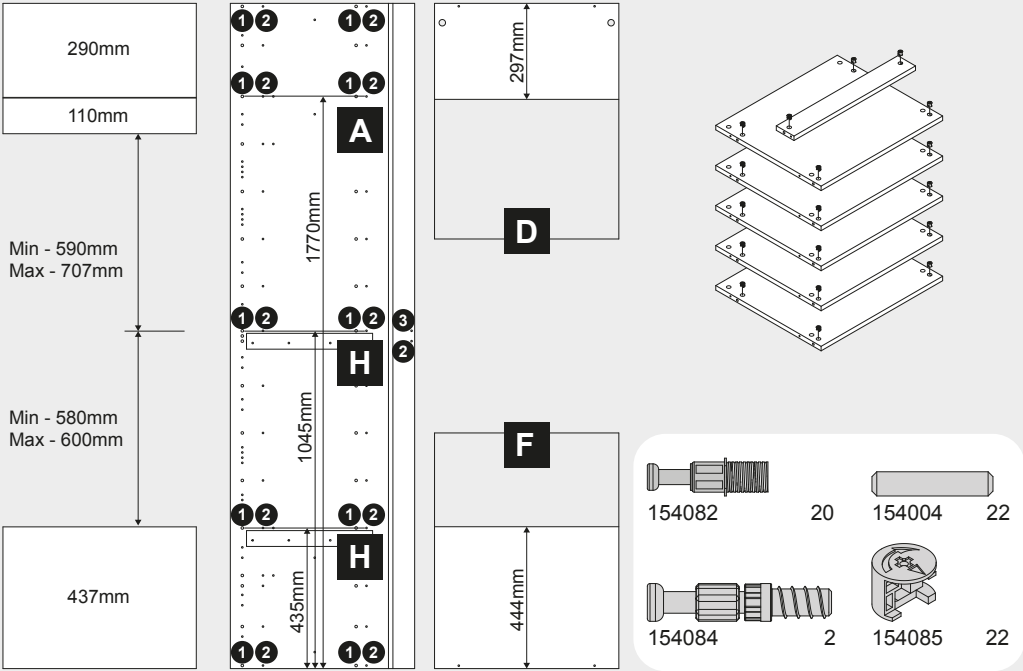
Housing Types C and K



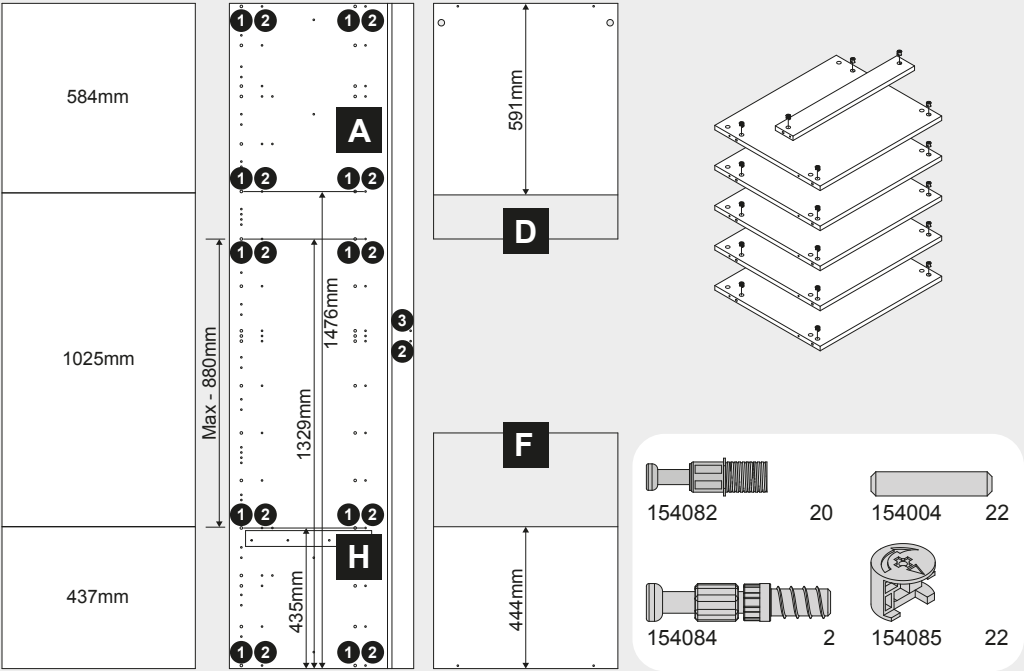
*Drawer Runners are positioned 51mm and 343mm up from bottom of the panel.



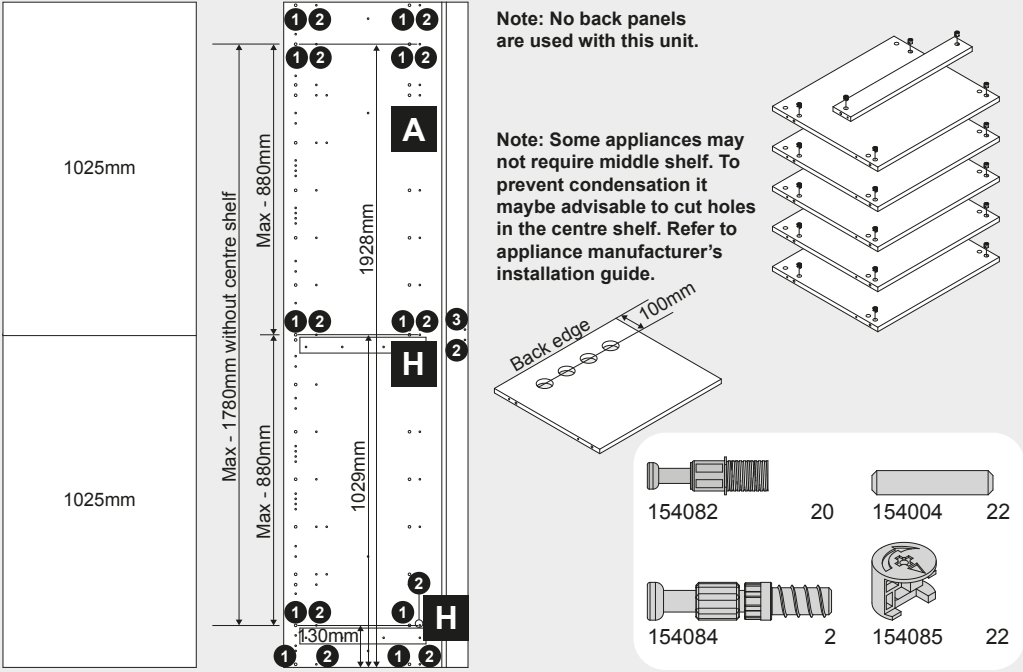
Housing Type D



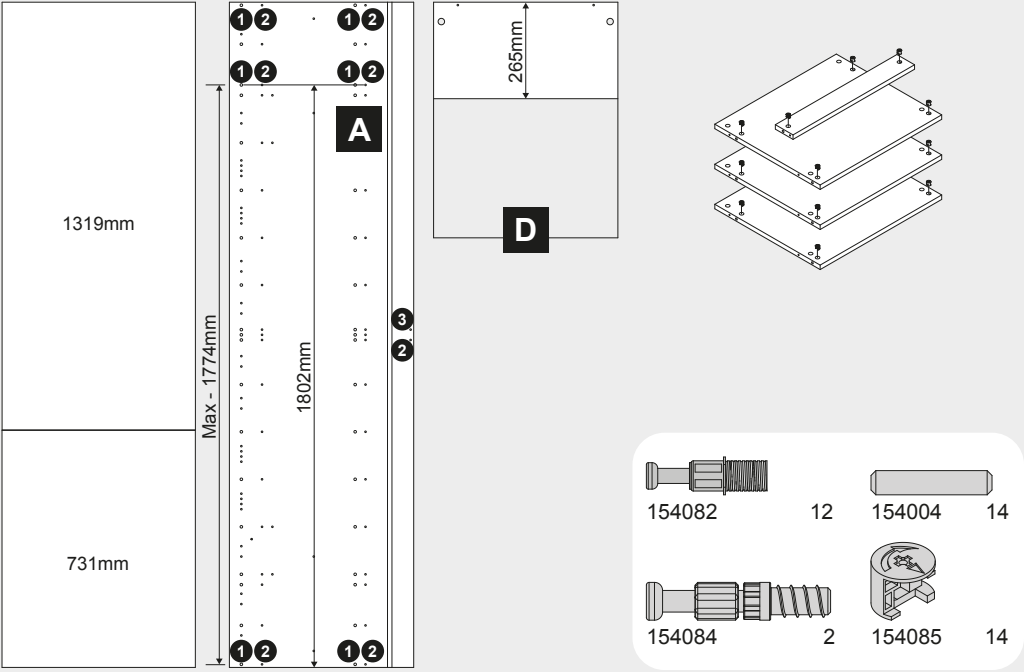
Housing Type E



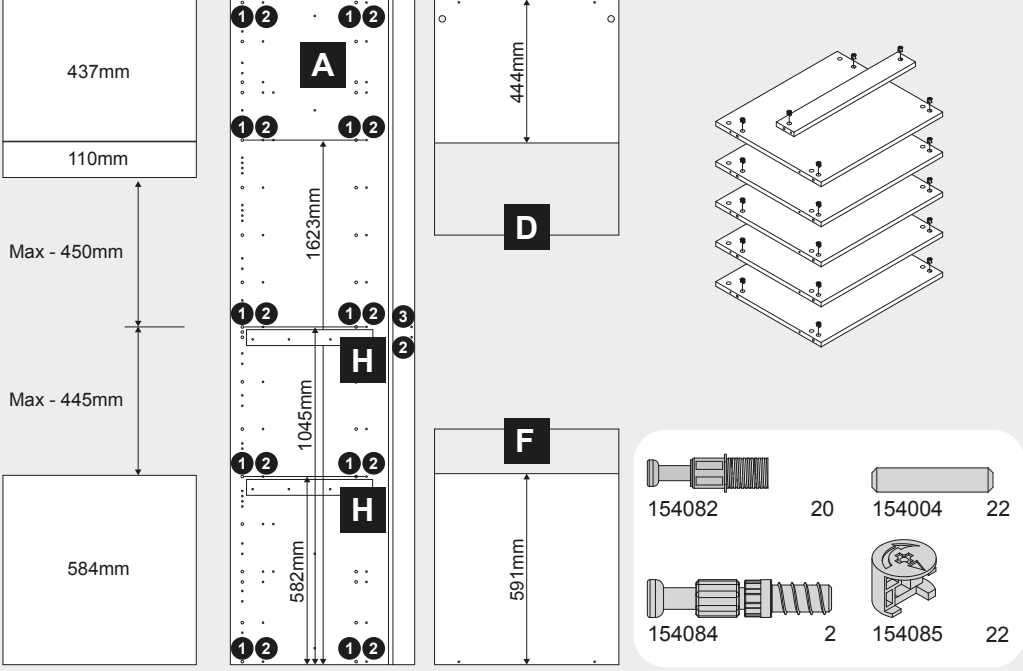
Housing Type F



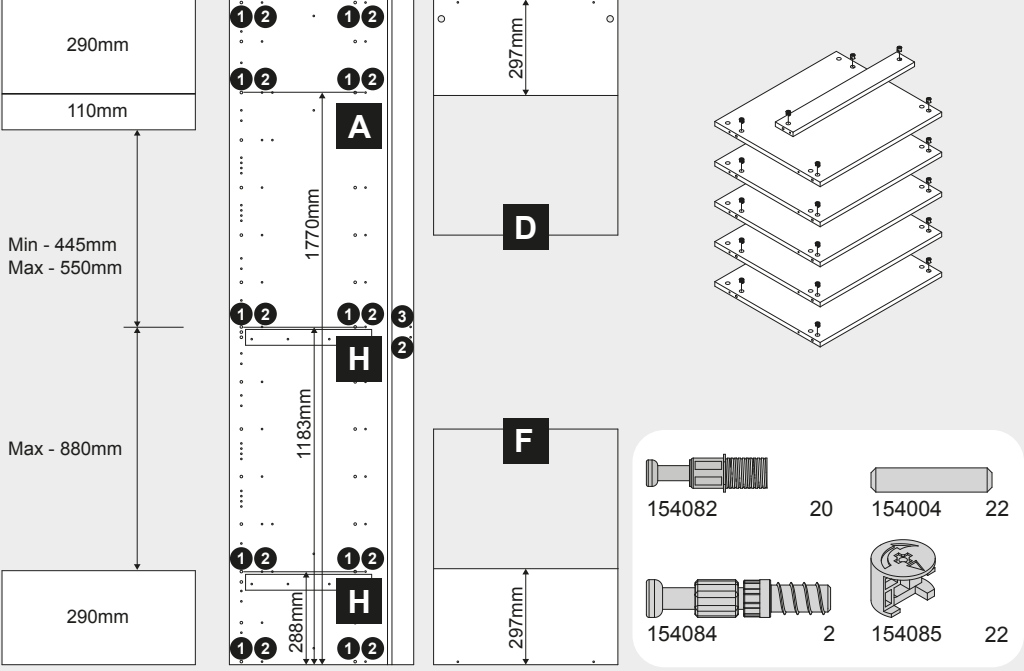
Housing Type G



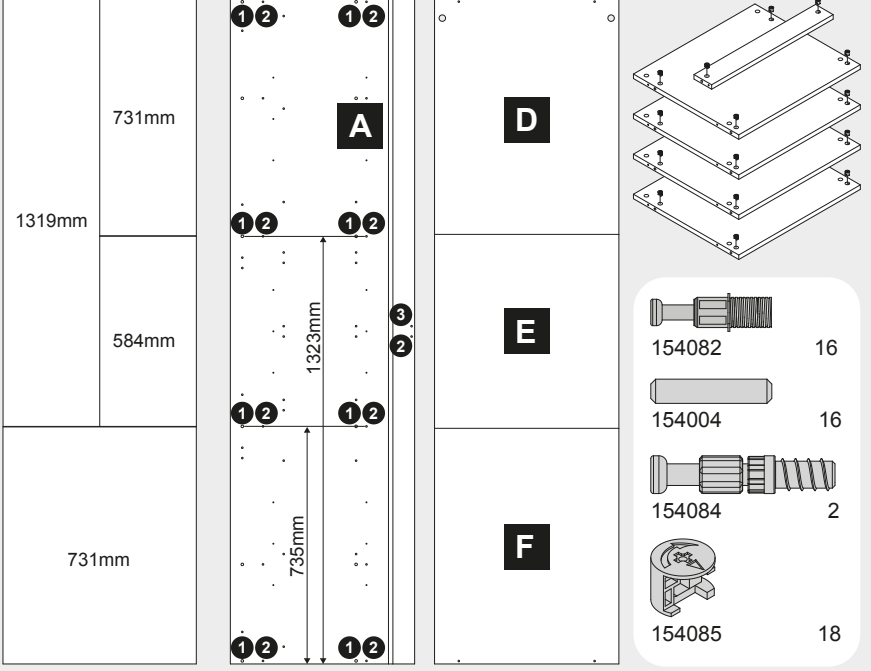
Housing Type L



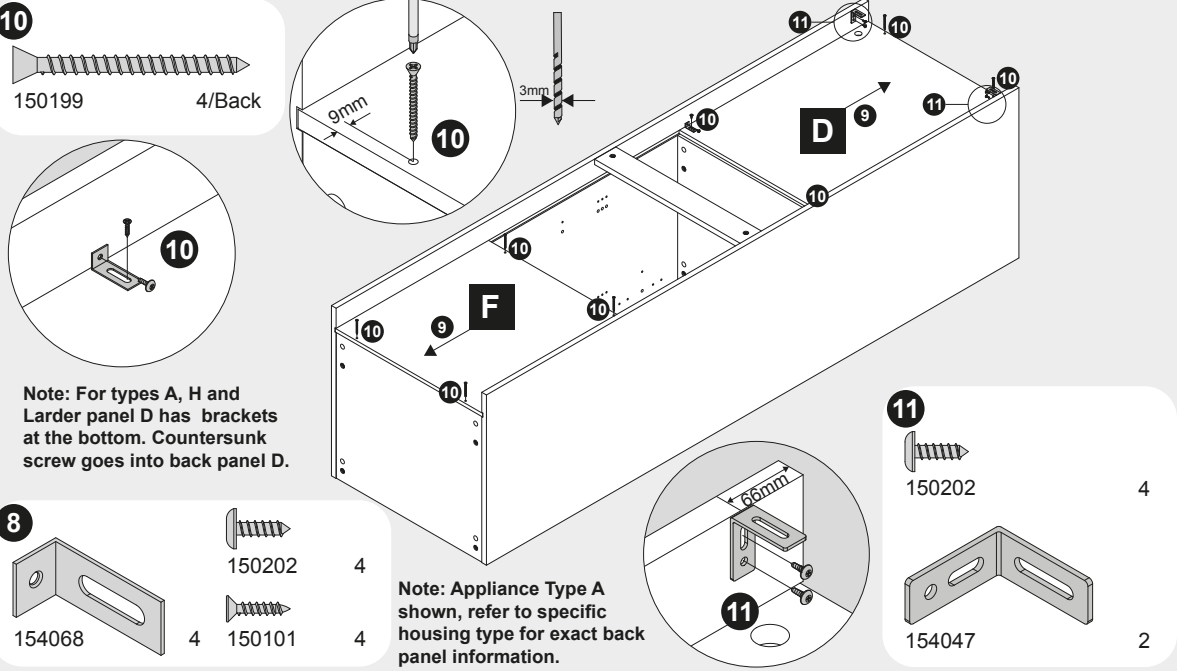
Housing Type M



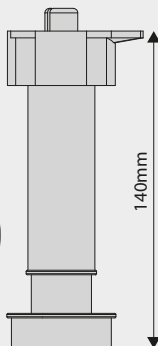
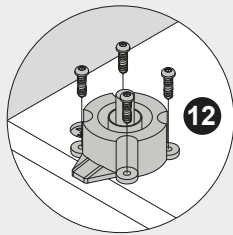
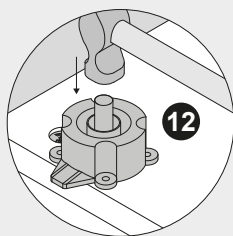
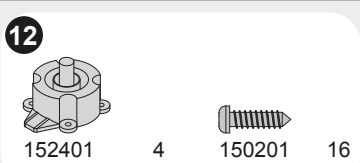
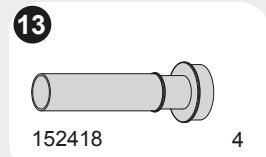
Larder



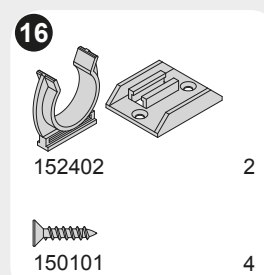
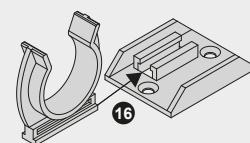
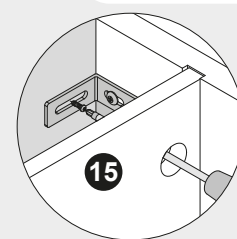
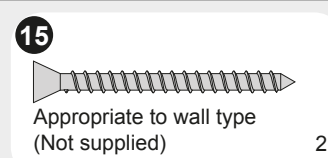
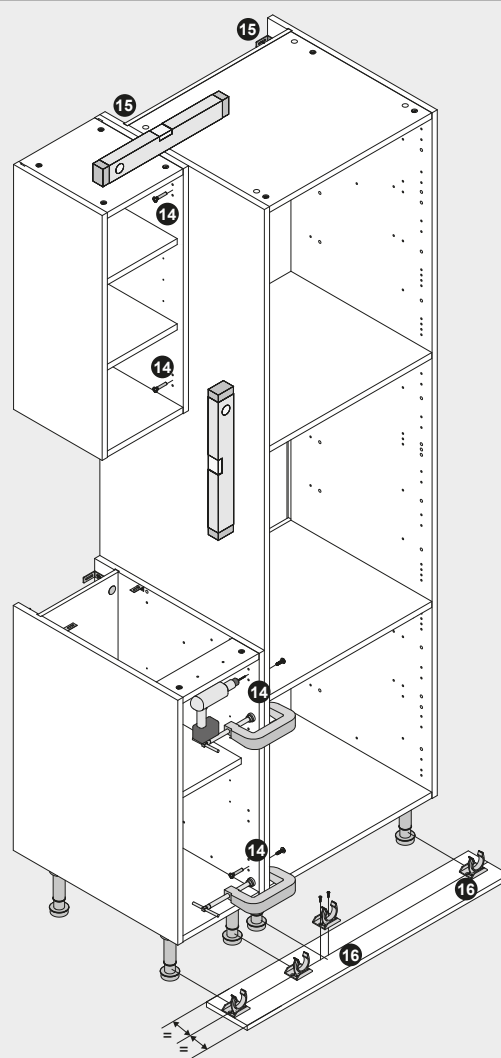
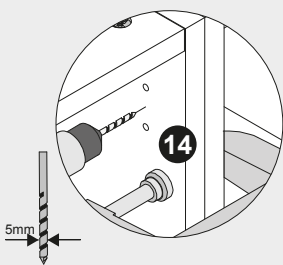
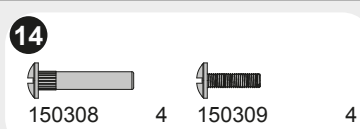
9 — 11 Assembly Instructions (continued)



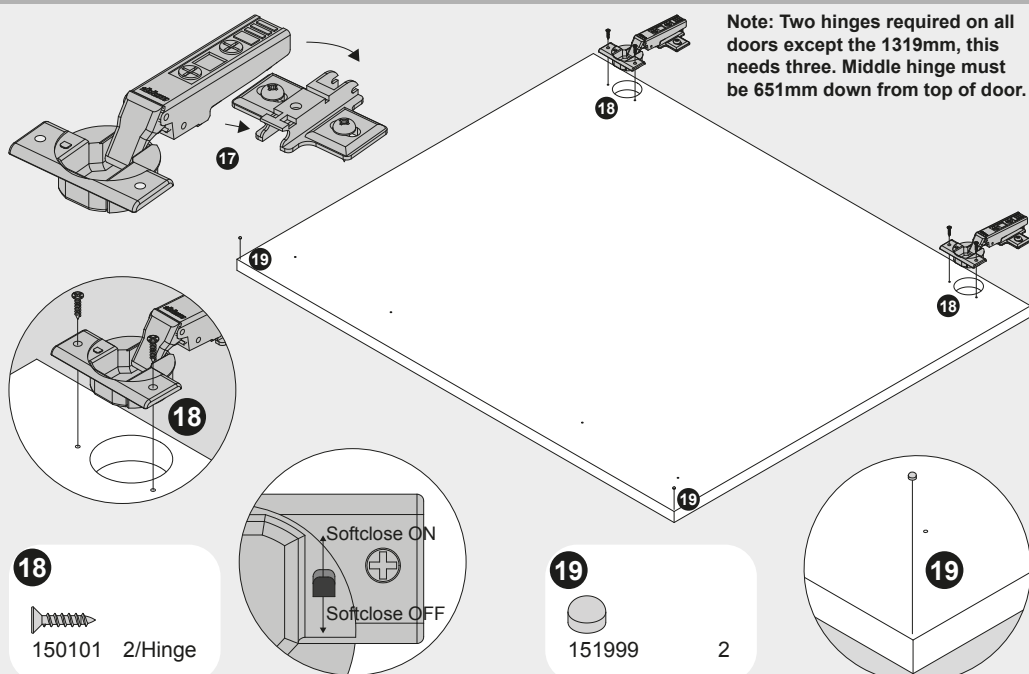
12 — 13



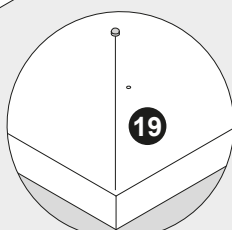
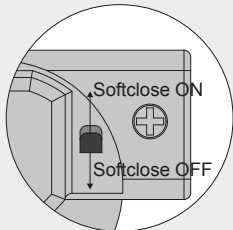
14—16 Installation Instructions



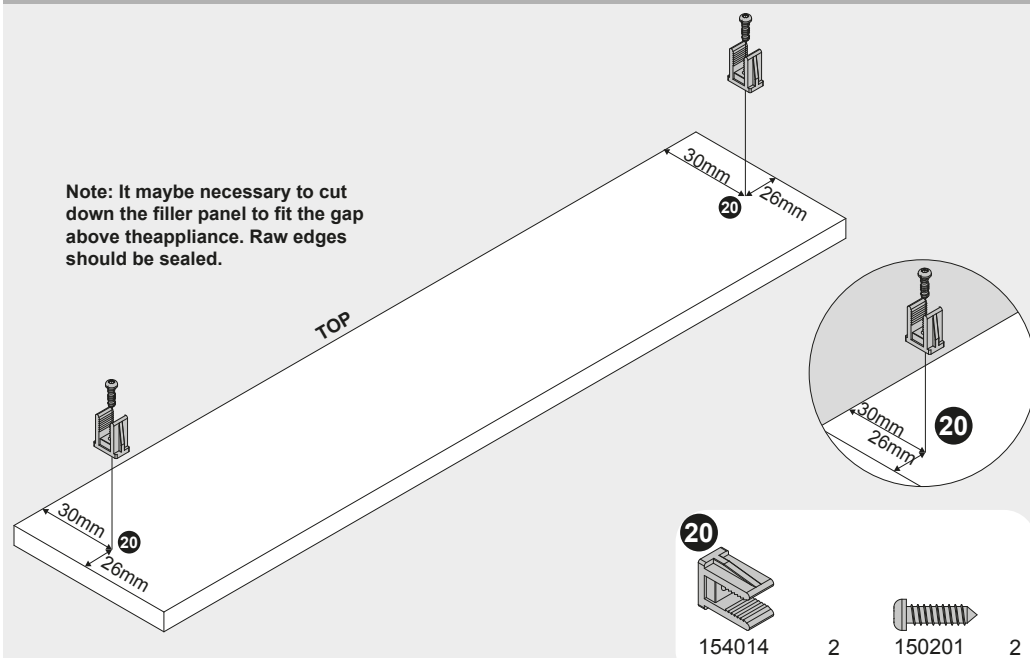
17 — 19



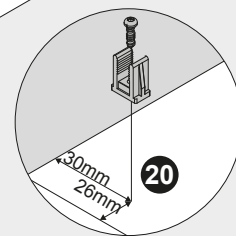
Note: Two hinges required on all doors except the 1319mm, this needs three. Middle hinge must be 651mm down from top of door.



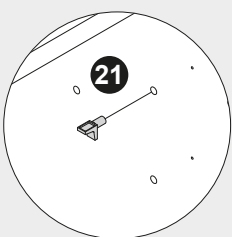
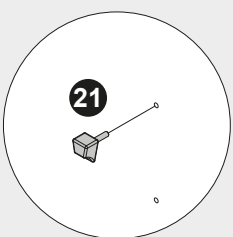
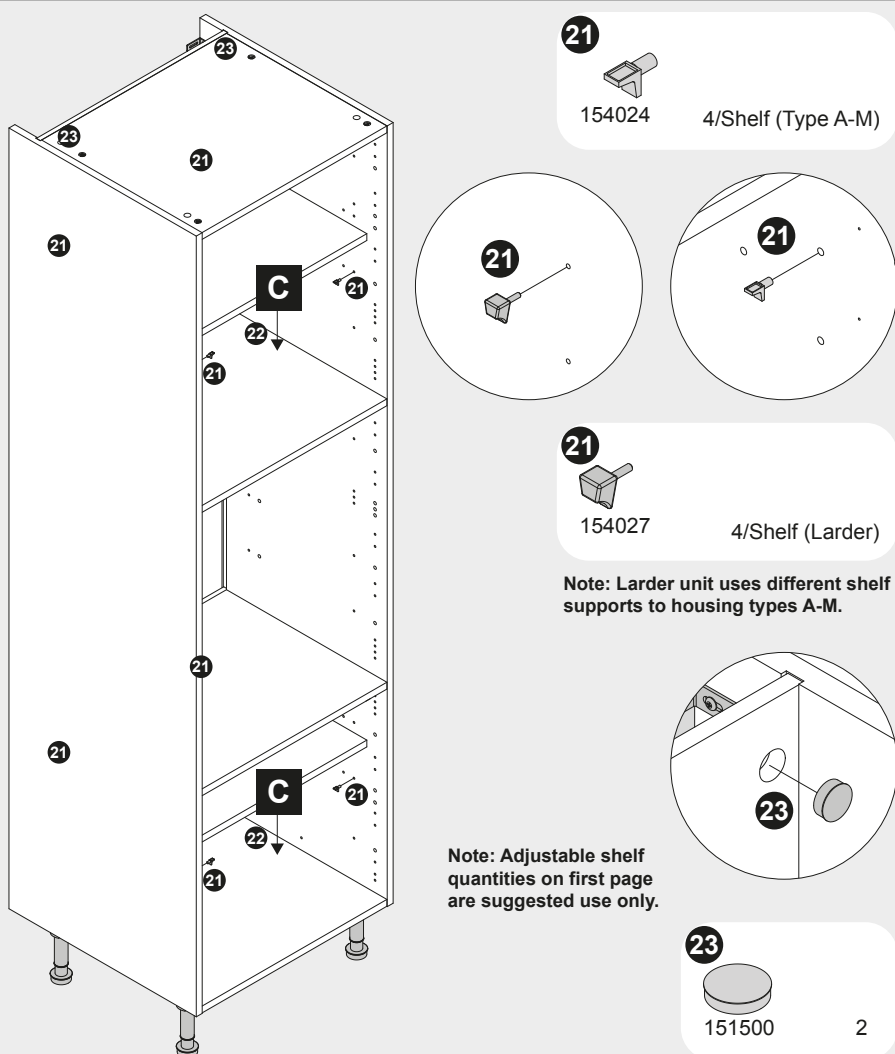
20



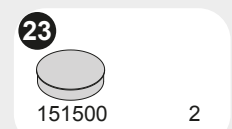
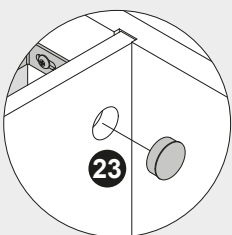
Note: It maybe necessary to cut down the filler panel to fit the gap above theappliance. Raw edges should be sealed.



21 — 23



Note: Larder unit uses different shelf supports to housing types A-M.



24 — 28

