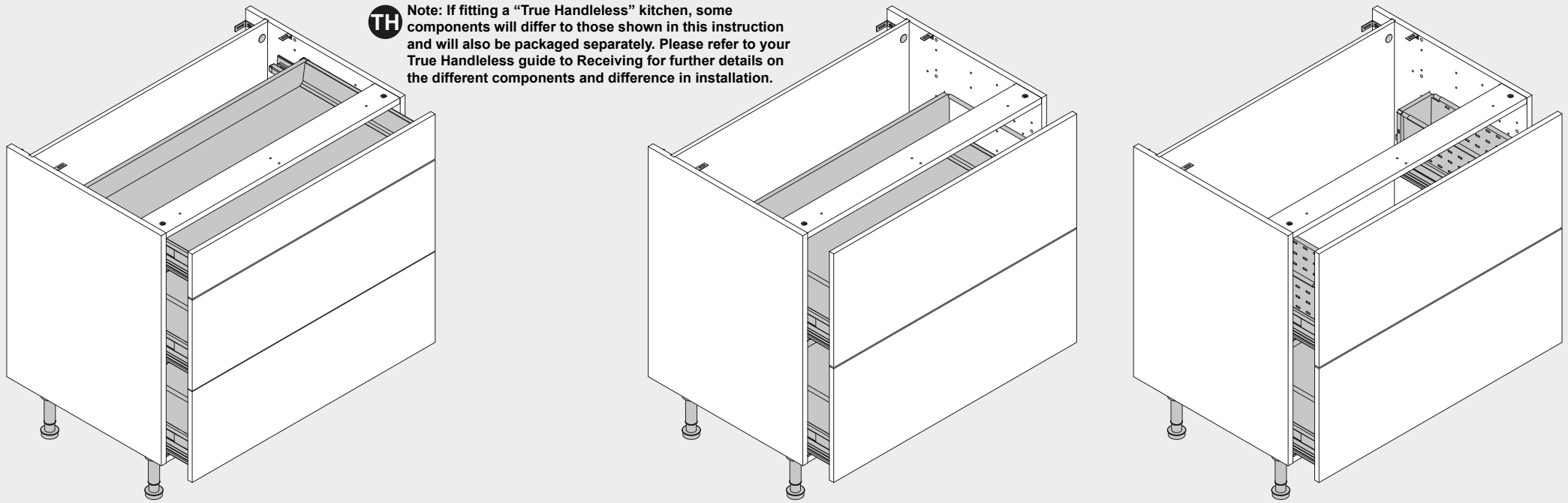


900 Drawer Unit Assembly



Important Information

Caution: Some pieces of hardware could be hazardous to small children. Keep all these items out of reach and do not leave children unattended in the assembly area.

Please read these instructions carefully before proceeding. Refer to the Guide to Receiving and Installing your Kitchen booklet for further information.

Note: Due to variation in wall conditions no screws are supplied for fixing the units to the wall. If in doubt consult an expert. Assemble the unit on a clean solid work surface.

In the interest of continuing improvements we reserve the right to amend or adjust the specifications without prior notice. Errors and omissions excepted.

These units are fitted with a drawer system. The drawers are supplied separately. These instructions show the runner positions for the drawer system.

Follow the instructions supplied with the drawers for drawerbox assembly.

Every effort has been made to ensure that this product leaves the factory in perfect condition. In the unlikely event that an item is damaged or incorrect, please contact the customer services department.

Note - Fitting Handles: (1) Decide where you are going to position each handle to maintain symmetry around your kitchen. (2) Measure the handle centres and mark off each door/drawer position. (3) Drill through the door/drawer using a fine drill (<2.5mm), then drill back from the rear face using a 4.5mm drill. (4) Attach with the fixings provided with your handle.

True Handleless Kitchens

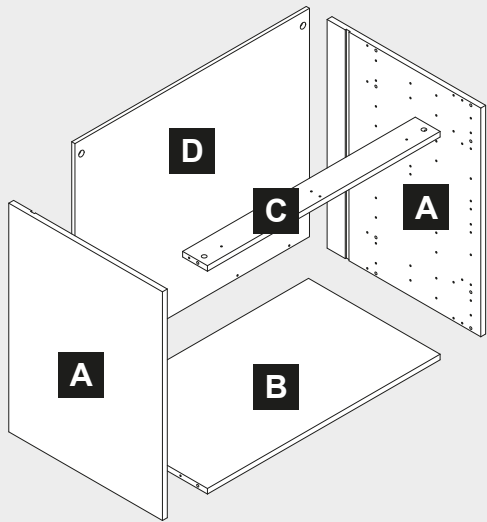
Installers: See Note Above

TH



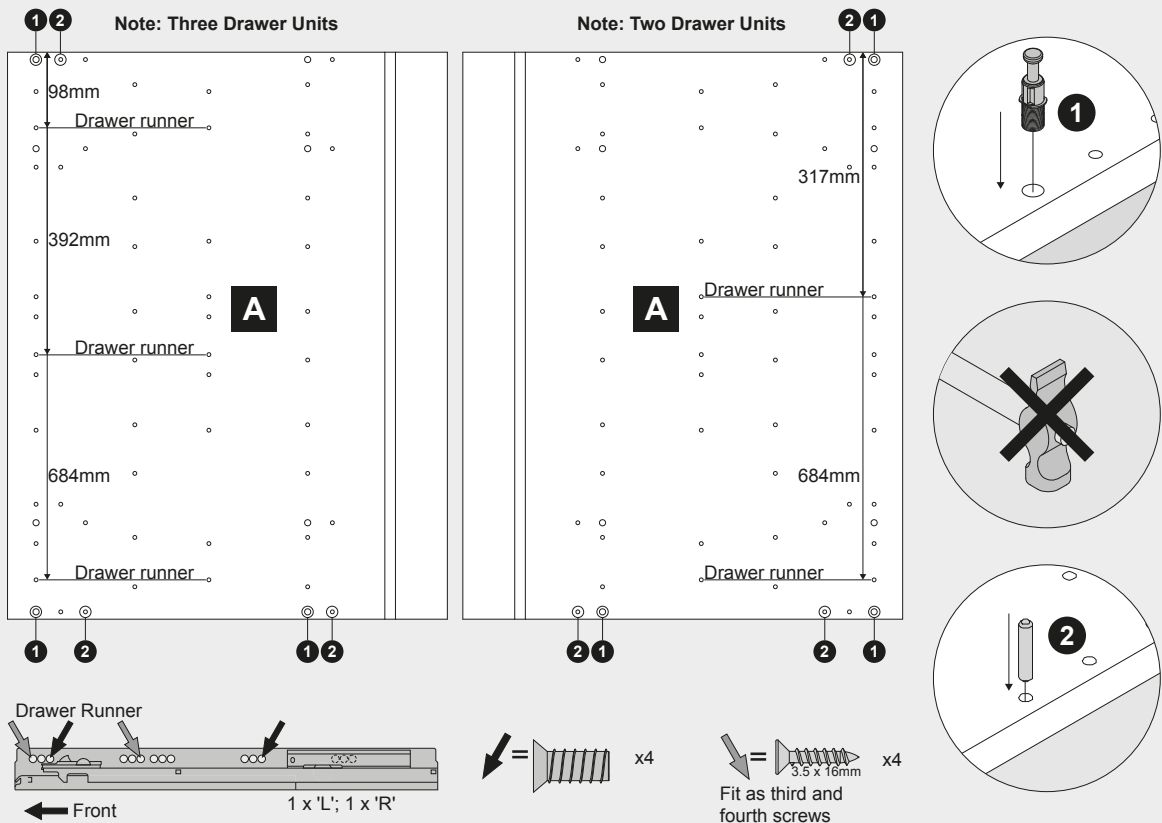
FM 665131

Components

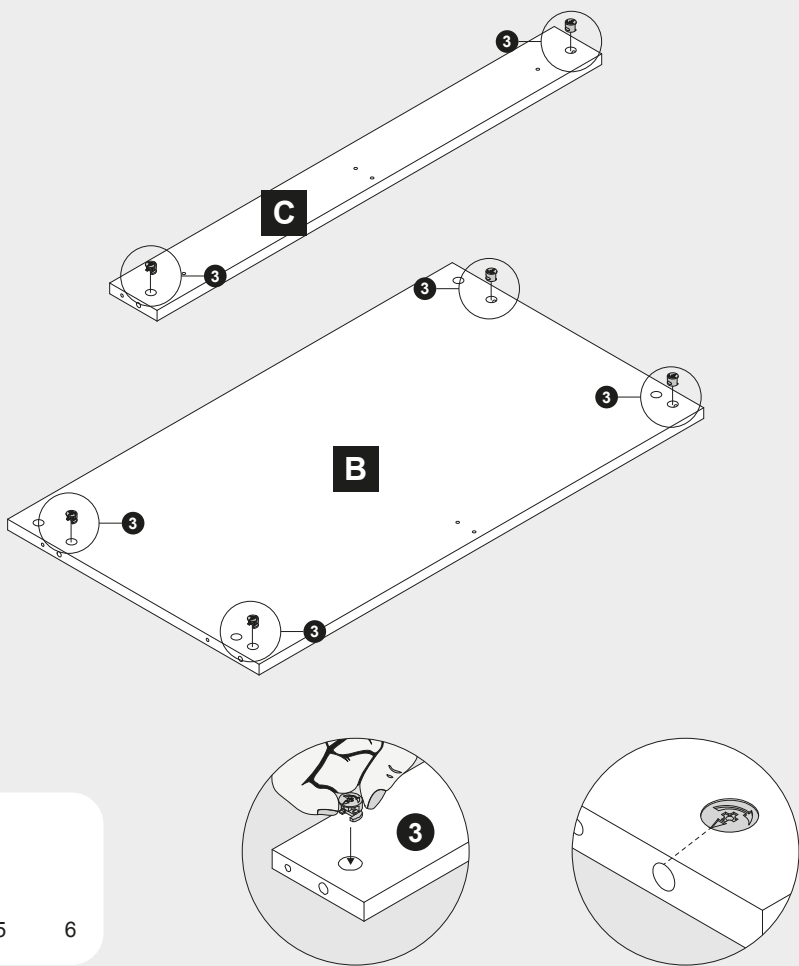


Ref. No.	Item	Quantity	Ref. No.	Item	Quantity	Ref. No.	Item	Quantity	Tools Required
150101	3.5x12mm	6	150308	Screw	2	152401	Bracket	4	Drill 5mm G-Clamp (pair) Medium Crosshead Screwdriver Hammer Large Flathead Screwdriver Tape Measure Spirit Level Bradawl
150202	4x12mm	8	150309	Screw	2	152418	Bracket	4	
150201	4x15mm	16	154068	Bracket	4	152402	Bracket	2	
150199	4.5x45mm	4	154047	Bracket	2	151500	Bracket	2	
154082	Bracket	6							
154085	Bracket	6							
154004	Bracket	6	151999	Bracket	6				

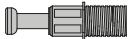
1 — 2 Assembly Instructions



3



1



154082

6

TH

Modification required at this stage, see True Handleless guide for further details.

2



154004

6

3



154085

6

4 — 5

TH Modification required at this stage, see True Handleless guide for further details.

Do Not Over Tighten

Start Locked

6 — 9

45mm 125mm

7 150199 4

8 150101 2
150202 2
154068 2

9 150202 4
154047 2

Note: Countersunk screw goes into back panel D.

10 — 11

10 152401 4 150201 16

11 152418 4

140mm

12 — 14 Installation Instructions

12 150202 2 154068 2

13 150308 2 150309 2

14 Appropriate to wall type (Not supplied) 2

Modification required at this stage, see True Handleless guide for further details.

15 — 16

15 151500 2

16 152402 2
150101 4

17

17 151999 8