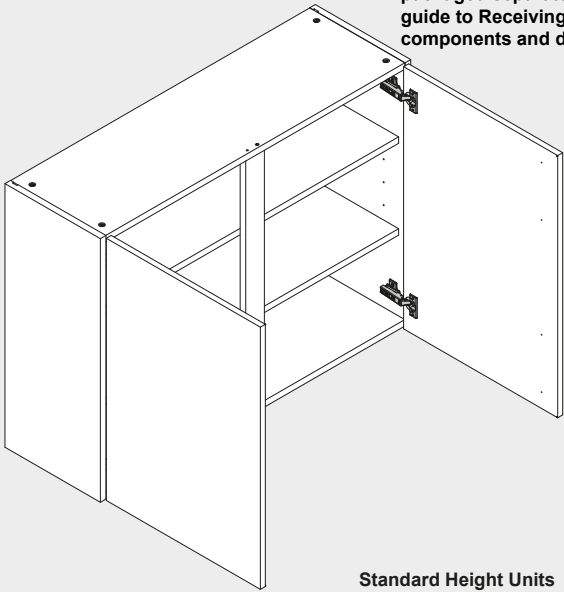


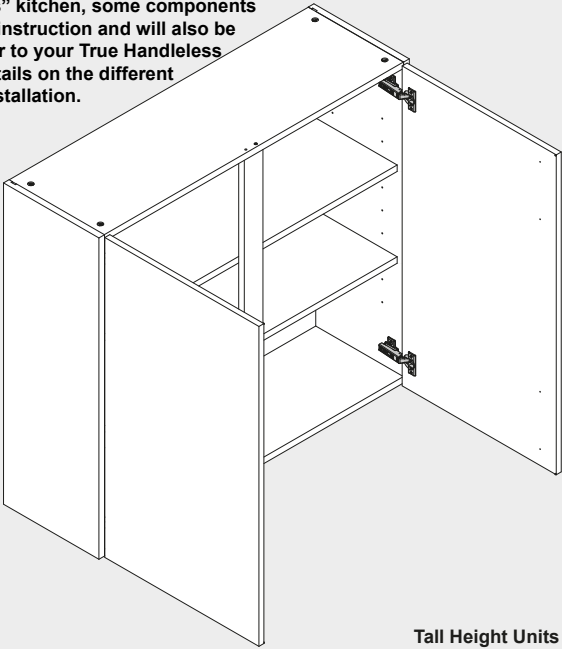
# 800, 900 and 1000 Wall Unit Assembly

TH

Note: If fitting a "True Handleless" kitchen, some components will differ to those shown in this instruction and will also be packaged separately. Please refer to your True Handleless guide to Receiving for further details on the different components and difference in installation.

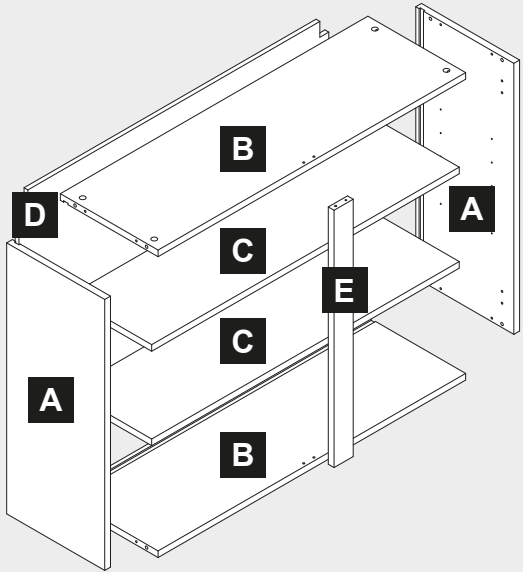


Standard Height Units



Tall Height Units

## Components



## Important Information - True Handleless Kitchens Installers: See Note Above TH

**Caution:** Some pieces of hardware could be hazardous to small children. Keep all these items out of reach and do not leave children unattended in the assembly area.

Please read these instructions carefully before proceeding. Refer to the Guide to Receiving and Installing your Kitchen booklet for further information.

**Note:** Due to variation in wall conditions no screws are supplied for fixing the units to the wall. If in doubt consult an expert. Assemble the unit on a clean solid work surface.

In the interest of continuing improvements we reserve the right to amend or adjust the specifications without prior notice. Errors and omissions excepted.

Every effort has been made to ensure that this product leaves the factory in perfect condition. In the unlikely event that an item is damaged or incorrect, please contact the customer services department.

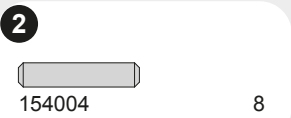
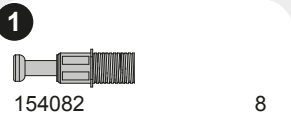
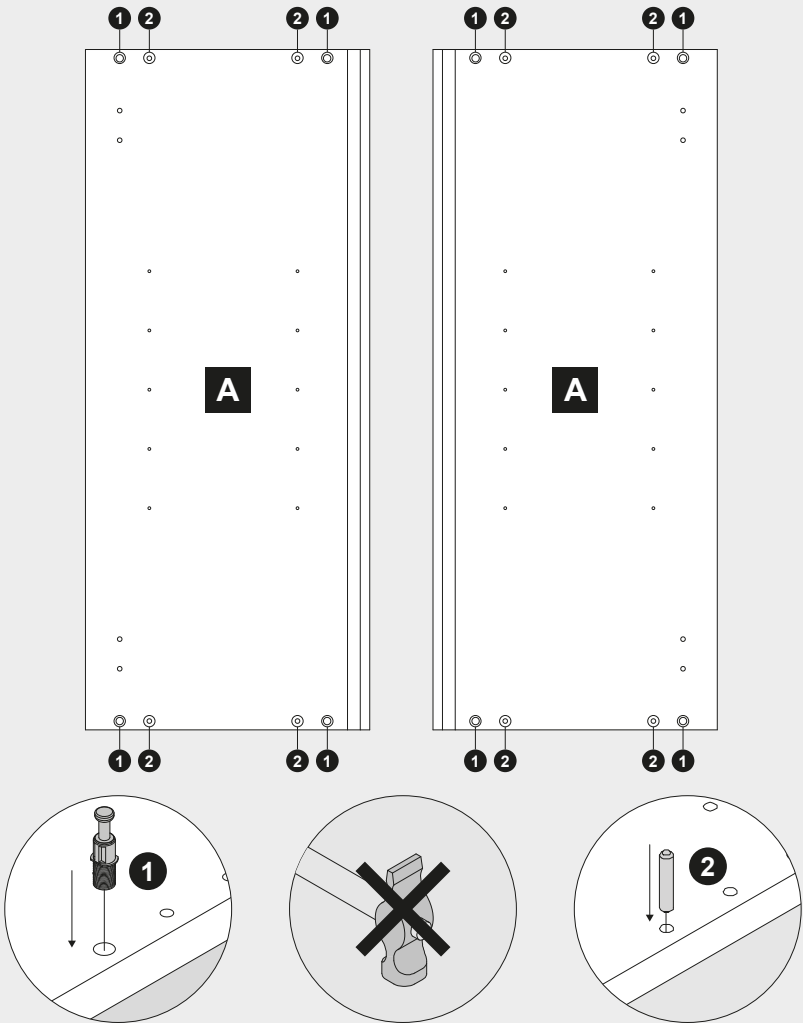


FM 665131

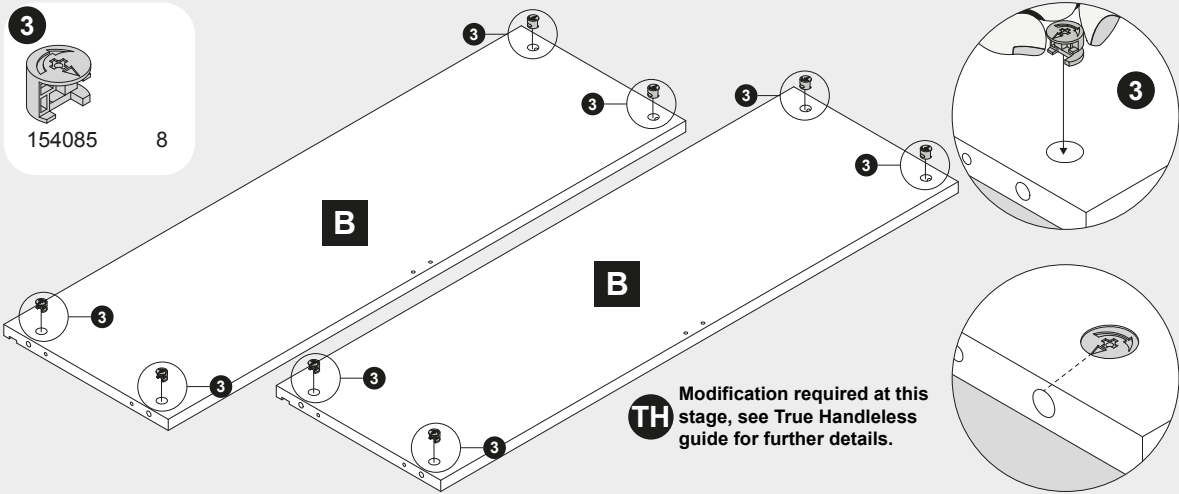
**Note - Fitting Handles:** (1) Decide where you are going to position each handle to maintain symmetry around your kitchen. (2) Measure the handle centres and mark off each door/drawer position. (3) Drill through the door/drawer using a fine drill (<2.5mm), then drill back from the rear face using a 4.5mm drill. (4) Attach with the fixings provided with your handle.

Ref. No.	Item	Quantity	Ref. No.	Item	Quantity	Ref. No.	Item	Quantity	Tools Required
150101	3.5x12mm	8	154027	Corner bracket	10/12	LH - 152246 RH - 152247	Hinge assembly	Pair	Drill G-Clamp (pair) Medium Crosshead Screwdriver Hammer Large Flathead Screwdriver Tape Measure Spirit Level Bradawl
150202	4x12mm	4	152250	L-shaped bracket	2	LH - 152248 RH - 152249	Hinge assembly	Pair	
150126	4x30mm	4	152181	Hinge assembly	4	152201	Bracket	2	
150198	55mm Carcase Screw	2	152162	Bracket	4	152148	Bracket	4	
154082	Screw	8	151999	Cap	4				
154085	Bracket	8							
154004	Bracket	10							
150308	Bracket	2							
150309	Bracket	2							

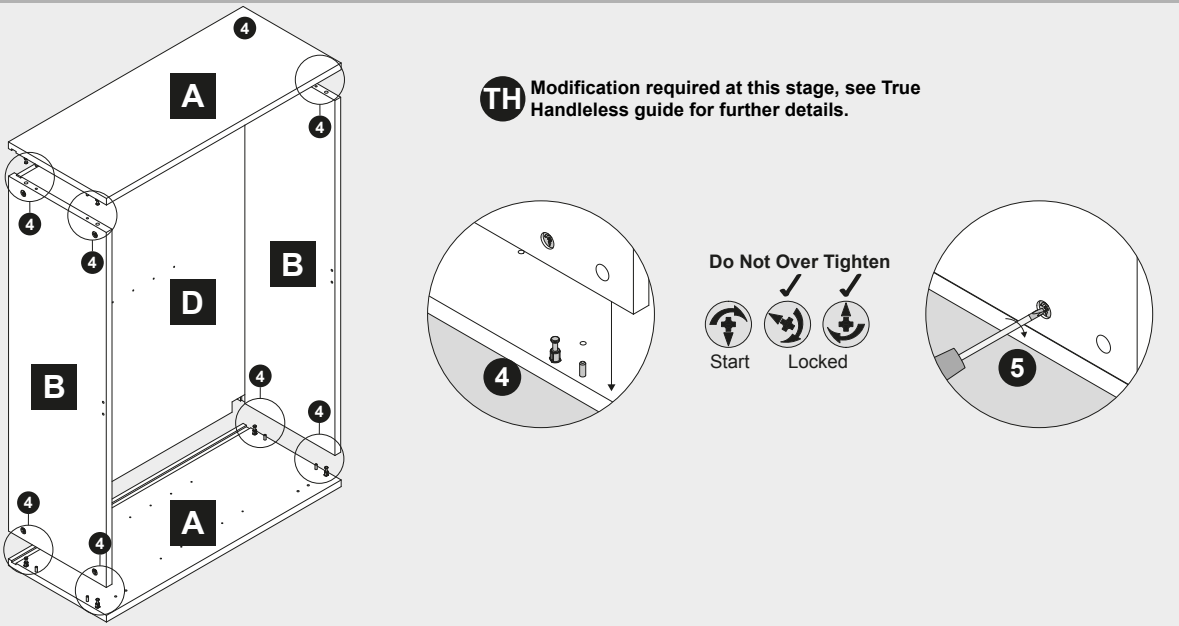
## 1 — 2 Assembly Instructions



## 3



## 4 — 5



6

8

6

154004

2

7

150198

2

8

150202

4

8

152250

2

Note: Holes for top and bottom panels of a 900mm unit will only be partially drilled and must be finished. Use a 5mm drill bit, with scrap wood on other side to drill into.

**TH** Modification required at this stage, see True Handleless guide for further details.

9

9

25mm

9

9

LH - 152246

RH - 152247

Pair

150126

4

10

12

Installation Instructions

10

152201

2

Appropriate to Wall type

(Not supplied)

6

11

12

LH - 152248

RH - 152249

Pair

13

14

13

150308

2

150309

2

13

14

14

Appropriate to Wall type

(Not supplied)

2

15

16

15

154027

10/800

12/1000

18

150101

8

Note: Do not over tighten screws or use a power screwdriver.

18

Softclose ON

Softclose OFF

19

22

21

151999

4

21

22

152148

4

19

20

20

20

20