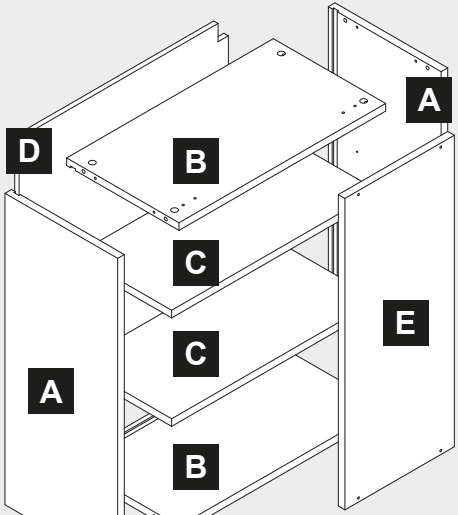
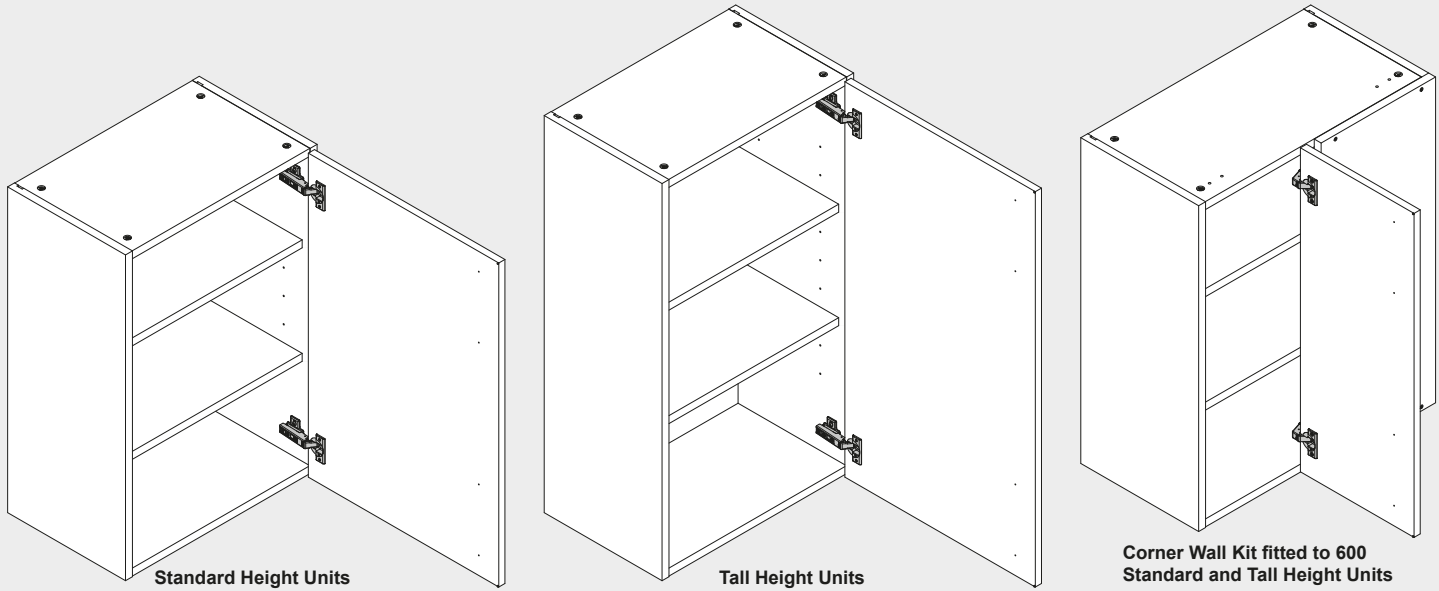


300, 400, 450, 500, 600 Wall and 600 Corner Wall Unit Assembly

TH Note: If fitting a “True Handleless” kitchen, some components will differ to those shown in this instruction and will also be packaged separately. Please refer to your True Handleless guide to Receiving for further details on the different components and difference in installation.

Components



Note: E included in the 600 standard height and tall height Corner Wall Unit conversion kit.

Important Information - True Handleless Kitchens Installers: See Note Above **TH**

Caution: Some pieces of hardware could be hazardous to small children. Keep all these items out of reach and do not leave children unattended in the assembly area. Please read these instructions carefully before proceeding. Refer to the Guide to Receiving and Installing your Kitchen booklet for further information.

Note: Due to variation in wall conditions no screws are supplied for fixing the units to the wall. If in doubt consult an expert. Assemble the unit on a clean solid work surface.

In the interest of continuing improvements we reserve the right to amend or adjust the specifications without prior notice. Errors and omissions excepted.

Every effort has been made to ensure that this product leaves the factory in perfect condition. In the unlikely event that an item is damaged or incorrect, please contact the customer services department.

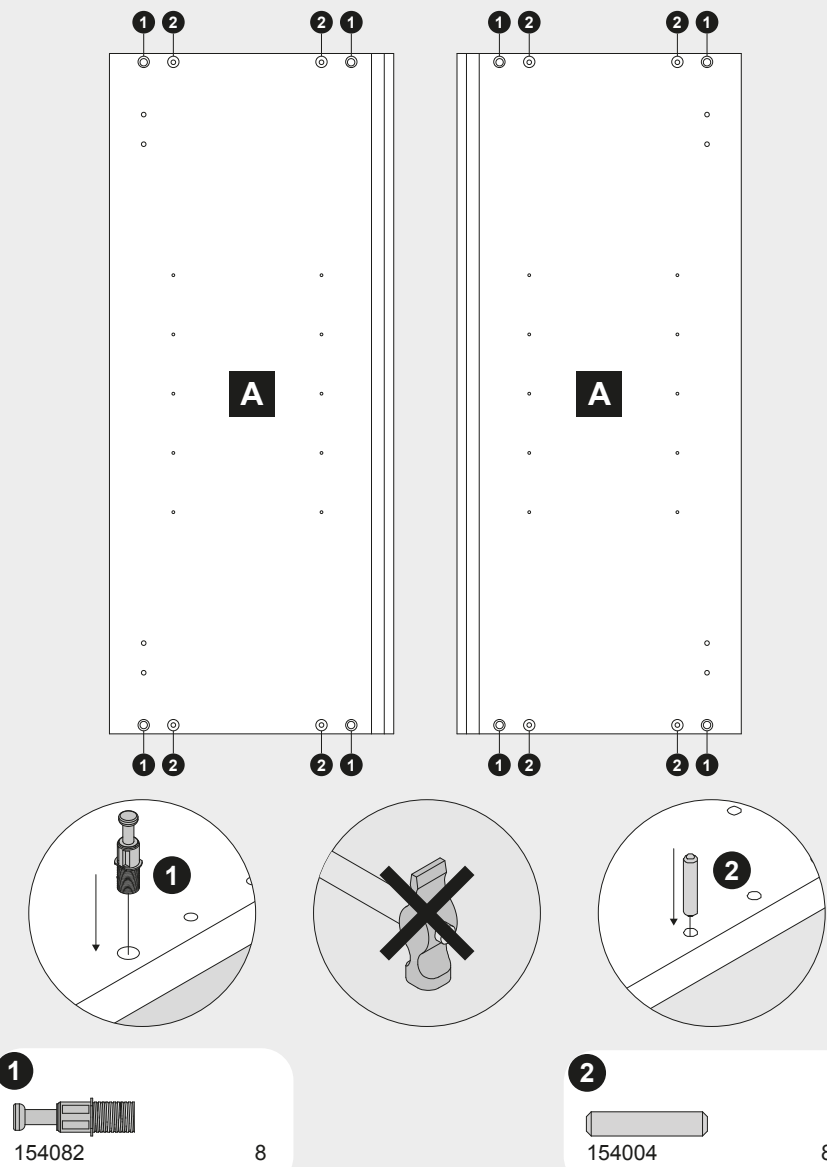


FM 665131

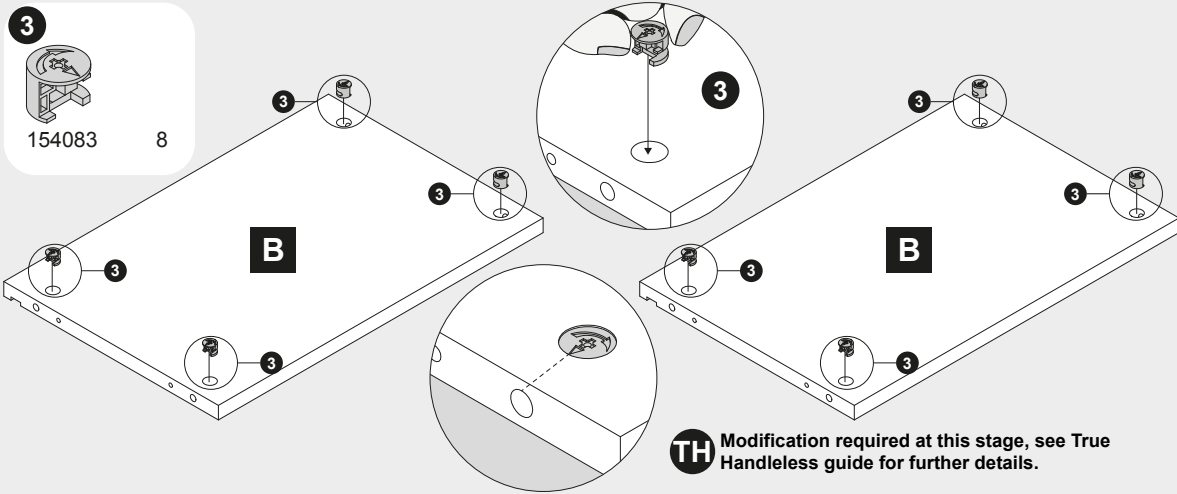
Note - Fitting Handles: (1) Decide where you are going to position each handle to maintain symmetry around your kitchen. (2) Measure the handle centres and mark off each door/drawer position. (3) Drill through the door/drawer using a fine drill (<2.5mm), then drill back from the rear face using a 4.5mm drill. (4) Attach with the fixings provided with your handle.

Ref. No.	Item	Quantity	Ref. No.	Item	Quantity	Ref. No.	Item	Quantity	Tools Required
150101	3.5x12mm	4	152181		2	152201		2	 Drill G-Clamp (pair) Medium Crosshead Screwdriver Hammer Large Flathead Screwdriver Tape Measure Spirit Level Bradawl
150126	4x30mm	4	152162		2	152148		2	
154082		8	LH - 152246 RH - 152247		Pair	Note: The following are supplied in the 600 Corner Wall Unit conversion kit.			
154085		8				150199	4.5x45mm	6	
154004		8	LH - 152248 RH - 152249		Pair	152108		2	
150308		2				152100		2	
150309		2	151999		2				
154027		8							

1 — 2 Assembly Instructions



3



4 — 5

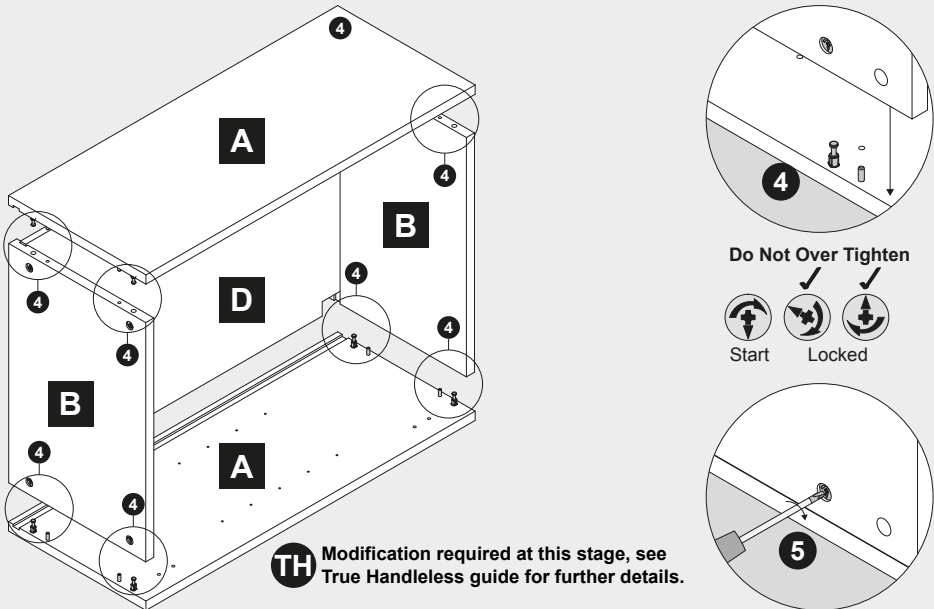




Diagram 6 shows the bottom panel being attached to the side panel. A black callout box with the number 6 points to the bottom panel, which is being secured with screws into the side panel's frame.



150126 4

 Appropriate to Wall type
(Not supplied) 6



9



LH - 152248
RH - 152249

Pair

10

150308 2 150309 2

Diagram 10 shows a circular inset view of the side of the cabinet. A 5mm drill bit is shown drilling a hole into the side panel. A dimension line indicates the hole diameter is 5mm. The number 10 is in a black circle.


Diagram 10 illustrates the process of attaching the side panel to the frame. The main view shows the side panel being positioned against the vertical frame rail. A cam bolt (labeled 10) is used to secure the panel, and a C-clamp is used to hold it in place. A circular inset provides a close-up view of the cam bolt being inserted into the side panel. A 5mm dimension line indicates the gap between the panel and the frame.

11  154027 8

Note: Substitute hinges and plates if using 600 Corner Wall Unit conversion kit.

Note: Do not over tighten screws or use a power screwdriver.


14



150101 8

The diagram shows a close-up of the door handle area. An arrow points to the top position, labeled "Softclose ON". Another arrow points to the bottom position, labeled "Softclose OFF". A plus sign (+) is visible on the handle plate.

17
151999 2

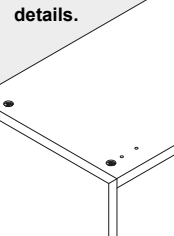


18

152148 2

TH Modification required at this stage, see True Handleless guide for further details.


TH at this stage, see True Handleless guide for further details.



The diagram shows a 3D perspective of a white cabinet. The cabinet has a main body with two internal shelves. A door is attached to the right side of the cabinet. The door is labeled with a black square containing the letter 'E'. There are four screws, each labeled with the number '19', shown being inserted into the door. Two screws are on the top edge and two are on the bottom edge. A circular inset at the bottom right shows a close-up of a screw being inserted into a hole in the door.

Note: It is advisable to fit the hinge plates to Panel E before panel E is fitted to the cabinet.

19



150198 4

TH Modification required at this stage, see True Handleless guide for further details.

Technical drawing of the cabinet assembly showing dimensions and part numbers. The drawing includes the following dimensions and part numbers:

- Top left corner dimensions: 20mm, 64mm, 625mm, 45mm.
- Top right corner dimensions: 625mm, 260mm, 20mm, 64mm.
- Part numbers: 20 (four locations).