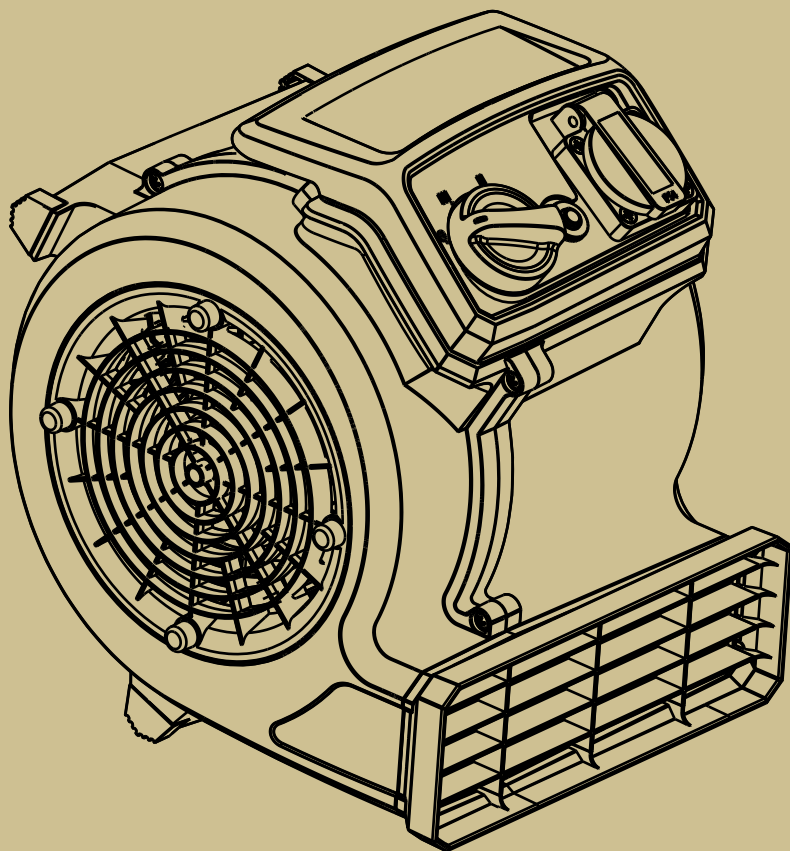


 **Vacmaster**[®]

AM1202 | 124W



ORIGINAL INSTRUCTIONS



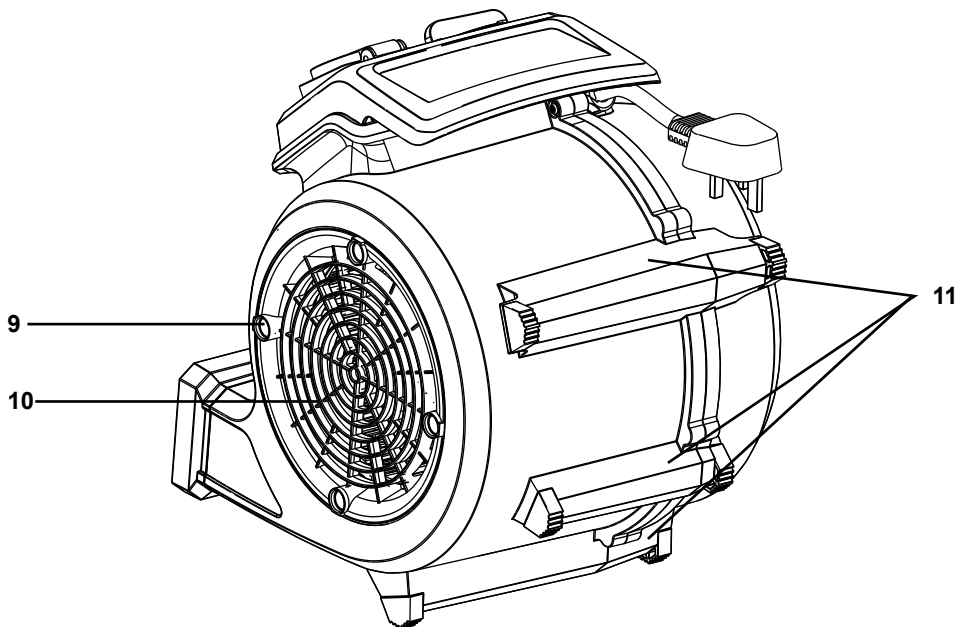
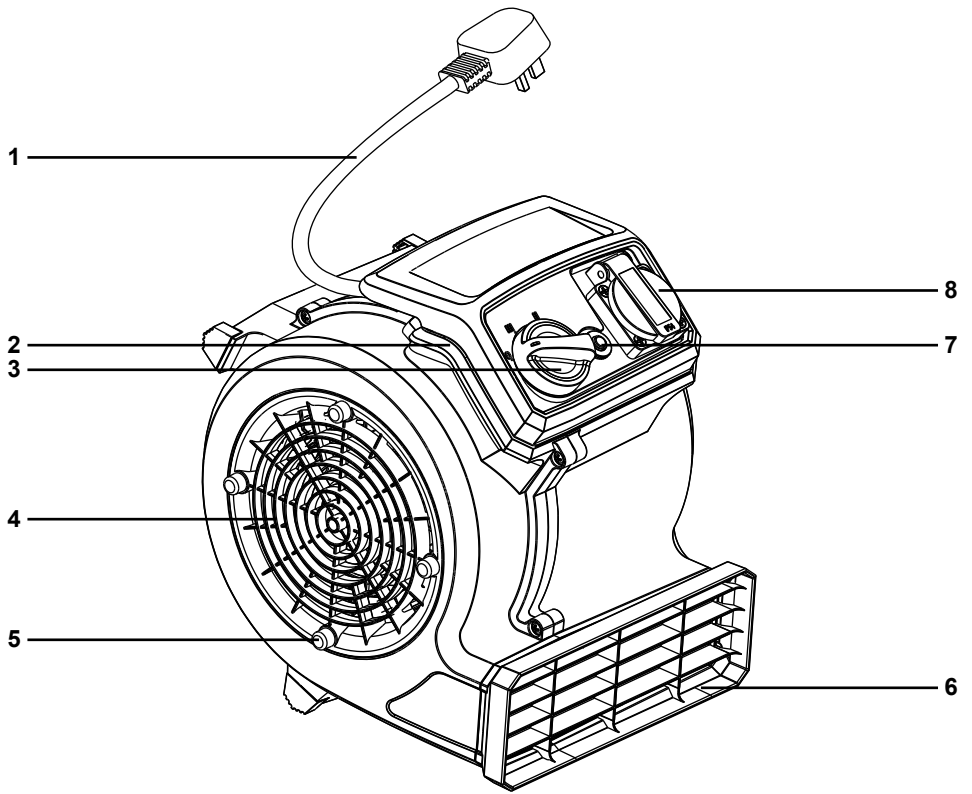




TABLE OF CONTENTS

SECTION	PAGE
Symbols.....	6
Safety Information	7
Grounding Instructions.....	9
Unpacking and Checking Carton Contents	9
Operation.....	9
Maintenance	11
Troubleshooting.....	12
Technical Data	13
Recycling and Disposal	13
Plug/Fuse Replacement (UK & Ireland Only).....	13

Thank you for purchasing this Vacmaster® Air Mover. Feel confident that with Vacmaster® you are obtaining a high quality product engineered for optimal performance.

FOR YOUR SAFETY: CAREFULLY READ AND UNDERSTAND ALL INSTRUCTIONS.

SYMBOLS

	Caution
	Read instruction manual. Failure to follow the warnings and instructions may result in electric shock, fire and/or serious injury.

SAFETY INFORMATION

READ AND UNDERSTAND ALL INSTRUCTIONS BEFORE USING THIS AIR MOVER.

When using the equipment, a few safety precautions must be observed to avoid injuries and damage. Please read the complete operating manual with due care. Keep this manual in a safe place so that the information is always available. If you give the equipment to any other person, give them these operating instructions as well. We cannot accept any liability for damage or accidents which arise due to a failure to follow these instructions and the safety information.

- This appliance can be used by children aged from 8 years and above and persons with reduced physical, sensory or mental capabilities or lack of experience and knowledge if they have been given supervision or instruction concerning use of the appliance in a safe way and understand the hazards involved. Children shall not play with the appliance. Cleaning and user maintenance shall not be made by children without supervision.
- Never leave the appliance switched on unattended, if you leave the work area, switch the appliance off or unplug it from the power supply.
- Do not use this air mover near flammable liquids, gases or explosive vapours like gasoline or other fuels, lighter fluids, cleaners, oil-based paints, natural gas, hydrogen, or explosive dusts like coal dust, magnesium dust, grain dust or gun powder. Sparks inside the motor can ignite flammable vapours or dust.
- Do not use this appliance to blow or move anything that is burning or smoking, such as cigarettes, matches, or hot ashes.
- Do not unplug by pulling on the cord. To unplug, grasp the plug, not the cord.
- Do not use with damaged cord, plug or other parts.
- Do not pull or carry by cord, use cord as handle, close a door on cord, or pull cord around sharp edges or corners.
- Before each use, check the power supply cable for damage. Do not use the equipment if the cable is damaged or worn. Danger of electric shock hazard.
- If the power cable for this equipment is damaged, it must be

replaced by a suitably qualified repair specialist in order to prevent hazards.

- If air mover is not working as it should, or has been dropped, damaged, left outdoors, or dropped into water, take it to a suitably qualified repair specialist for inspection and repair before using it again.
- Make sure that the mains voltage corresponds with the information on the rating plate.
- Only plug the appliance into a socket which is safeguarded by at least 13A.
- For additional protection: It is recommended that this vacuum cleaner can be used in conjunction with residual current device (RCD) with a rated residual current of 30mA or less.
- Do not use with a solid state speed control device.
- Do not expose to rain. Store indoors.
- Do not handle the plug or air mover with wet hands.
- Do not run cord under carpeting. Do not cover cord with throw rugs, runners, or other coverings. Direct cord away from traffic areas where it will not be tripped over.
- Do not cover the ventilation openings. Do not vacuum with any ventilation openings blocked; keep free of dust, lint, hair or anything that may reduce air flow. Never operate this air mover with intake grills removed.
- This air mover is equipped with an over-load protection device which may shut down the unit during operation. To reduce the risk of injury from accidental starting, turn off unit and unplug power cord when not in use or before servicing.
- Keep hair, loose clothing, fingers, and all parts of body away from openings and moving parts.



CAUTION:

- Ensure a dust mask is used when operating in a dusty environment.
- Do not move or carry the air mover while it is operating.
- Only operate on a level, stable surface to prevent the air mover from falling and potentially causing injury or damage to the unit or property.

GROUNDING INSTRUCTIONS

This appliance must be grounded. If it should malfunction or breakdown, grounding provides a path of least resistance for electric current to reduce the risk of electric shock.

This air mover is for use on a nominal 220-240V circuit, and has a grounded plug. The air mover should not be plugged into an outlet if it is not grounded. Do not use with an extension cord.

Unpacking and Checking Carton Contents

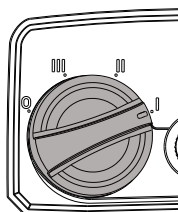
1	Power Cord	7	Reset Button
2	Handle/Cord Storage	8	Power Extension Outlet
3	3-Speed On/Off Switch	9	Mounting Pegs
4	Intake Grill (Left)	10	Intake Grill (Right)
5	Mounting Pegs	11	3-Position Anti-Skid Feet
6	Air Discharge Grill		

OPERATION

1. Switching On/Off

Verify that the 3-speed on/off switch is set to "0" (OFF) position. Connect the mains plug to a suitable power outlet.

Position	Status
0	Off
III	Maximum
II	Medium
I	Low



2. Air Mover Operation

- 1) Place the air mover in the desired position on a stable surface. Ensure there is at least a foot of clearance on each side of the air mover. Avoid placing the air mover where loose fabric, sheets, or other objects can get pulled onto the intake grills.
- 2) Direct air mover at the designated target area, using one of the operational positions (Fig.1).
- 3) Plug in the air mover to a grounded power outlet. See page 9 for Grounding Instructions. **DO NOT USE WITH AN EXTENSION CORD.**
- 4) Turn on the air mover by rotating the 3-speed on/off switch clockwise to the desired power level.
- 5) The air mover is fitted with a power outlet socket near the On/Off Switch.
- 6) When finished operation, turn the 3-speed on/off switch counter-clockwise to the "0" (OFF) position and unplug the power cord from the power outlet.



CAUTION: The air mover is equipped with an overload protection feature. If the air mover is overloaded, it will shut off and will need to be reset before it can be used again. If this occurs, first remove any power tool or other device from the socket. Then set the on/off switch to "0" (OFF) and press the reset button. Check that there are no obstructions preventing airflow into the intake grills before turning on the air mover again.

3. Operational Positions

This air mover has the ability to connect up to 12 units together to maximize air circulation (Fig. 2). To do this, plug the first unit into a grounded electrical outlet. Then plug a second unit into the power socket of the first unit. Each unit can be controlled independently.



WARNING: Do not stack air movers vertically during operation. To reduce risk of overheating or overload, ensure area around intake grills are clear to allow for unobstructed air flow.



WARNING: The total rated amperage for all units, running through the unit plugged into the wall outlet, should never exceed 10A. Do not use an extension cord to connect units, or to connect a unit to the wall outlet.

MAINTENANCE



WARNING: DO NOT STORE OUTDOORS. STORE IN A DRY ENVIRONMENT, AWAY FROM HAZARDOUS MATERIALS, SUCH AS TOXIC, CARCINOGENIC, FLAMMABLE, OR EXPLOSIVE SUBSTANCES.



CAUTION: TO PREVENT DAMAGE TO AIR MOVER, PROPERTY DAMAGE, OR PERSONAL INJURY: DO NOT STACK MORE THAN THREE UNITS HIGH. STACK ONLY ON A STABLE, LEVEL, EVEN SURFACE. DO NOT TRANSPORT STACKED UNITS UNLESS THEY ARE BRACED ON ALL SIDES.



CAUTION: DO NOT TURN ON THE AIR MOVER WHILE IT IS STACKED. THE STACKING PEGS ARE FOR STORAGE PURPOSES ONLY.

1. Maintenance Before and After Each Use

- 1) Inspect the plug and the cord to ensure that it has not been damaged during operation or between uses. If the plug or cord is damaged, do not use the air mover and replace the damaged part immediately.
- 2) Check the air intake and air discharge grills and make sure they are free of blockage.

2. Cord Storage

- 1) Before storing the air mover, ensure the power switch is turned to the OFF position, and unplug the unit from the power outlet.
- 2) Wrap the power cord around the base of the handle.
- 3) Use the attached cord clip to hold the cord in place.

3. Storing the Air Mover

- 1) To conserve space while storing multiple units, this air mover can be stacked together with multiple additional units (Fig. 3).
- 2) To stack, the pegs on the intake grill on the power switch side of the unit must be inserted into the peg receiver on the opposite side of the partner unit.



WARNING: ENSURE THAT THE UNIT IS NEVER OPERATED WITHOUT THE INTAKE GRILLS, AIR DISCHARGE GRILL, AND IMPELLER.

TROUBLESHOOTING



WARNING: TO REDUCE THE RISK OF ELECTRIC SHOCK, UNPLUG BEFORE TROUBLESHOOTING.

PROBLEM	POSSIBLE CAUSE	SOLUTION
The air mover will not operate.	No power supply.	Check the power supply, cord, breakers, and fuses.
	Faulty power cord.	Unplug and check the power cord. If damaged, have it repaired by qualified personnel or contact the after sales helpline.
	Switch in the wrong position.	Move the switch to the "On" position (I, II, or III).
	The switch is faulty.	Have the switch replaced by qualified personnel or contact the after sales helpline.
	Overload protection has engaged, shutting off the air mover.	First check and remove any power tool or other devices from the power receptacle. Then set the switch to the "Off" position (0) and press the reset button.
The air mover runs but makes loud scraping noise.	Damage to the unit has caused deformed housing or misaligned centrifugal fan.	Replace the air mover.
The air mover runs but centrifugal fan does not rotate.	The centrifugal fan and housing are jammed.	Replace the air mover.
	There is a problem with the switch or capacitor.	
The air mover runs briefly then shuts off due to overload protection.	The intake grill or air discharge grill is obstructed.	Remove the obstruction.
	The motor is damaged.	Replace the air mover.
The air mover runs but with excessive vibration.	The centrifugal fan has dirt build up.	Have the air mover inspected by qualified personnel or contact the after sales helpline.
	The centrifugal fan is damaged or the motor is bent.	Replace the air mover.

TECHNICAL DATA



Motor	220-240V ~ 50Hz
Power	124W
Air flow	15m ³ /min

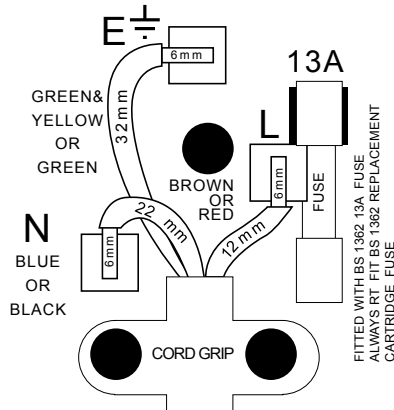
RECYCLING AND DISPOSAL

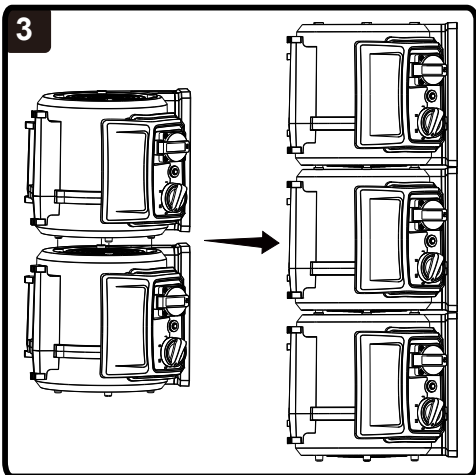
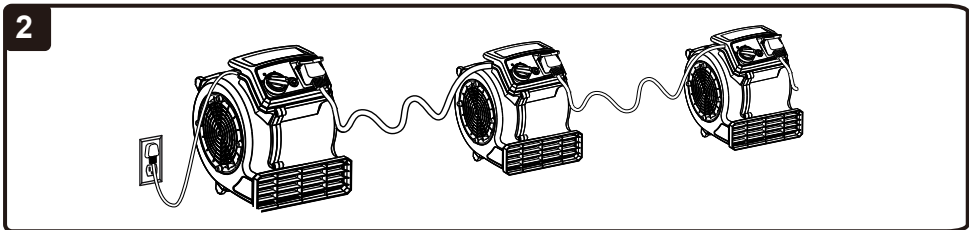
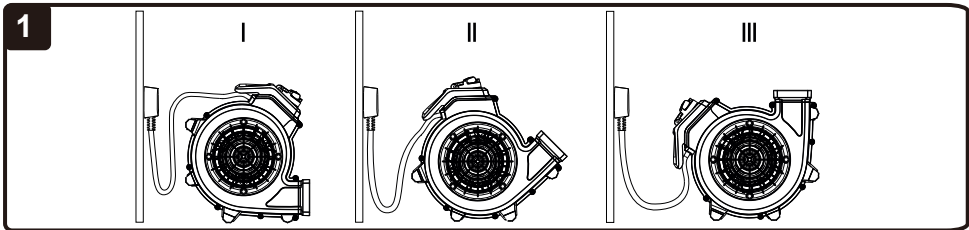


This marking indicates that this product should not be disposed with other household wastes throughout the EU. The machine must be delivered in rigid packaging to avoid damage during transportation. The packaging and the machine itself are manufactured from recyclable materials and should be disposed of accordingly.

PLUG/FUSE REPLACEMENT (UK & IRELAND ONLY)

This product is fitted with a non-rewirable plug. If the plug has to be changed, refer to the picture below.





AM1202
Suzhou Cleva Electric Appliance Co., Ltd.
No.8 Ting Rong Street
Suzhou Industrial Park, Suzhou
Jiangsu Province, China
www.cleva-europe.com
Made in P.R.C