

1: CHECK GATE WIDTH



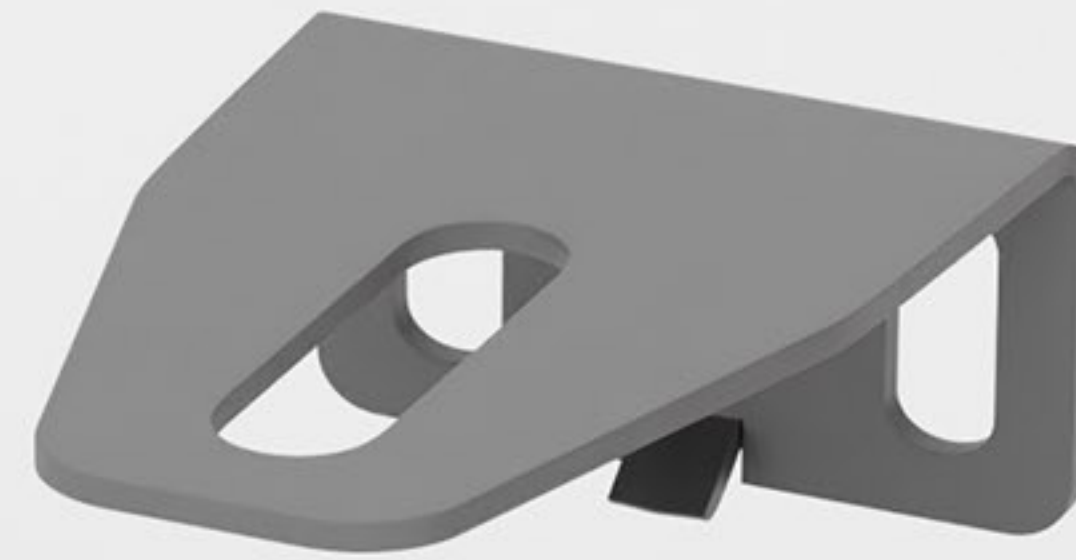
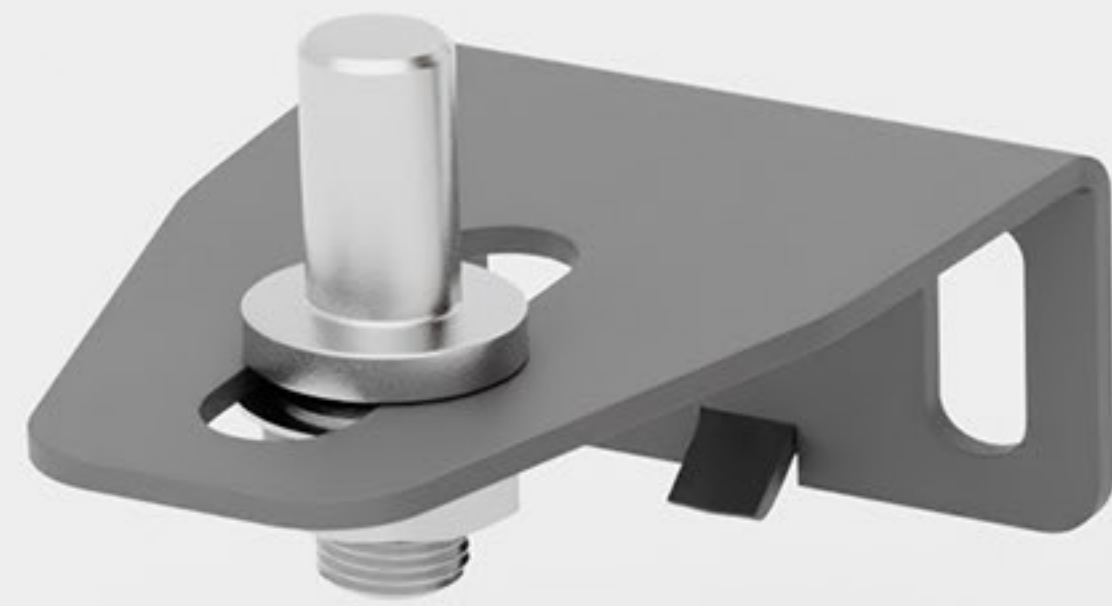


2: MARK & DRILL LOWER BRACKET

NOTES

- 2 X PLACES
- 10MM DRILL





3: PRE-ASSEMBLE LOWER SPIGGOT



**M10 BOLTS
2 x PLACES**

4: FIX LOWER HINGE TO FLOOR

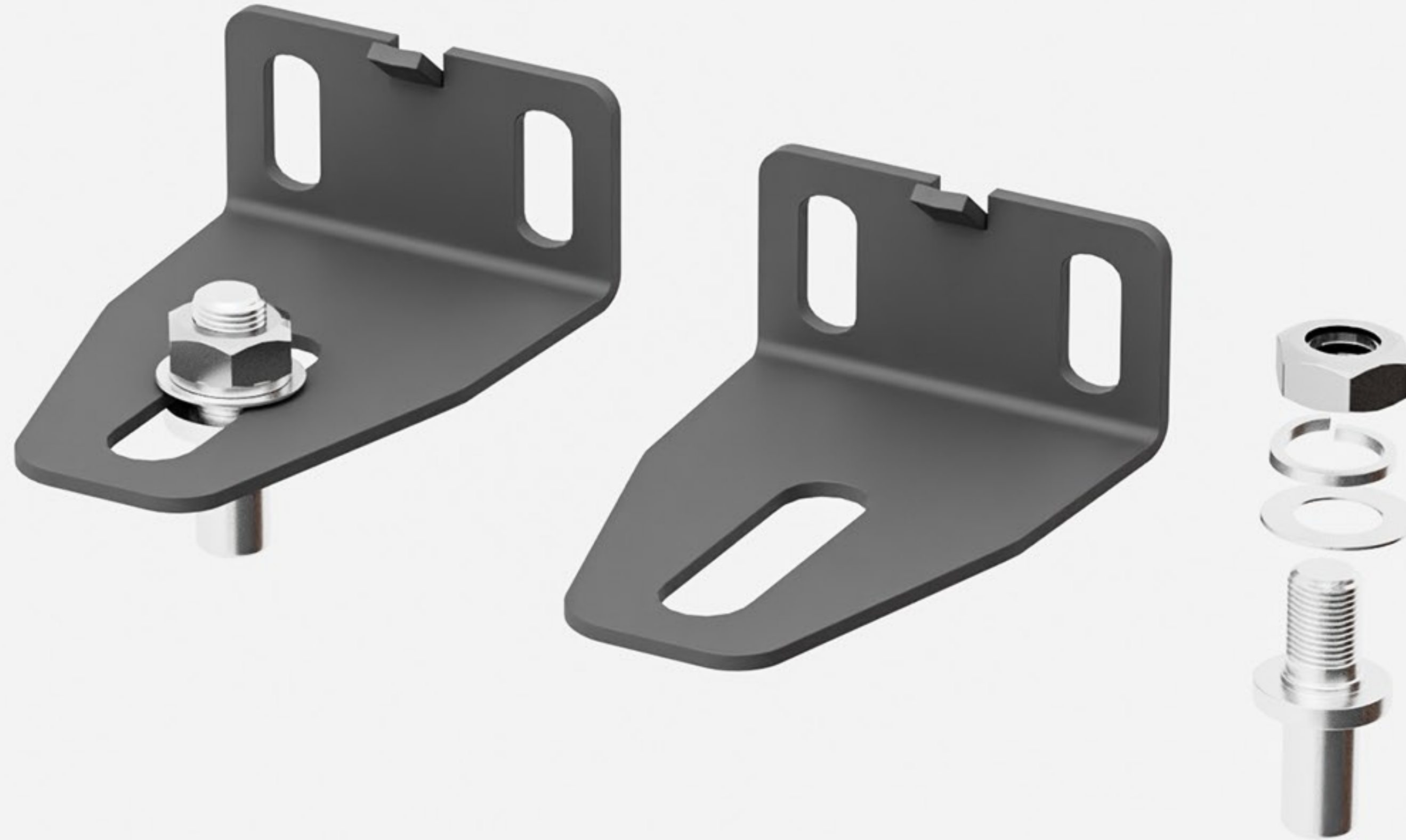


5: LOAD GATE - HOLD SQUARE



TWO PERSON LIFT ADVISED

6: ASSEMBLE UPPER SPIGGOT



NOTES

- OPPOSITE TO LOWER BRACKET

7: MARK UPPER BRACKET



NOTES

- HOLD GATE SQUARE
- MARK 2 X PLACES



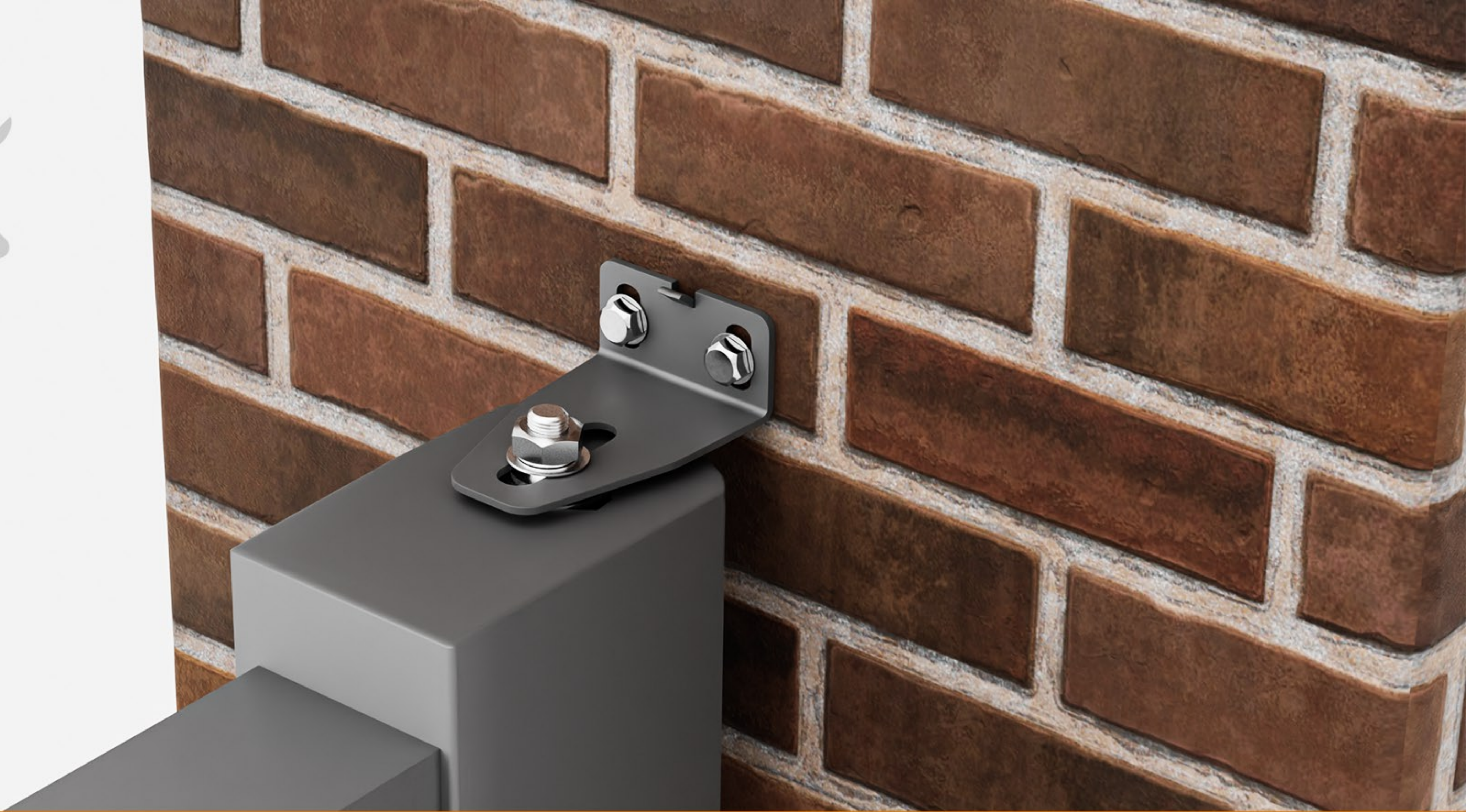


8: DRILL HOLES x 2



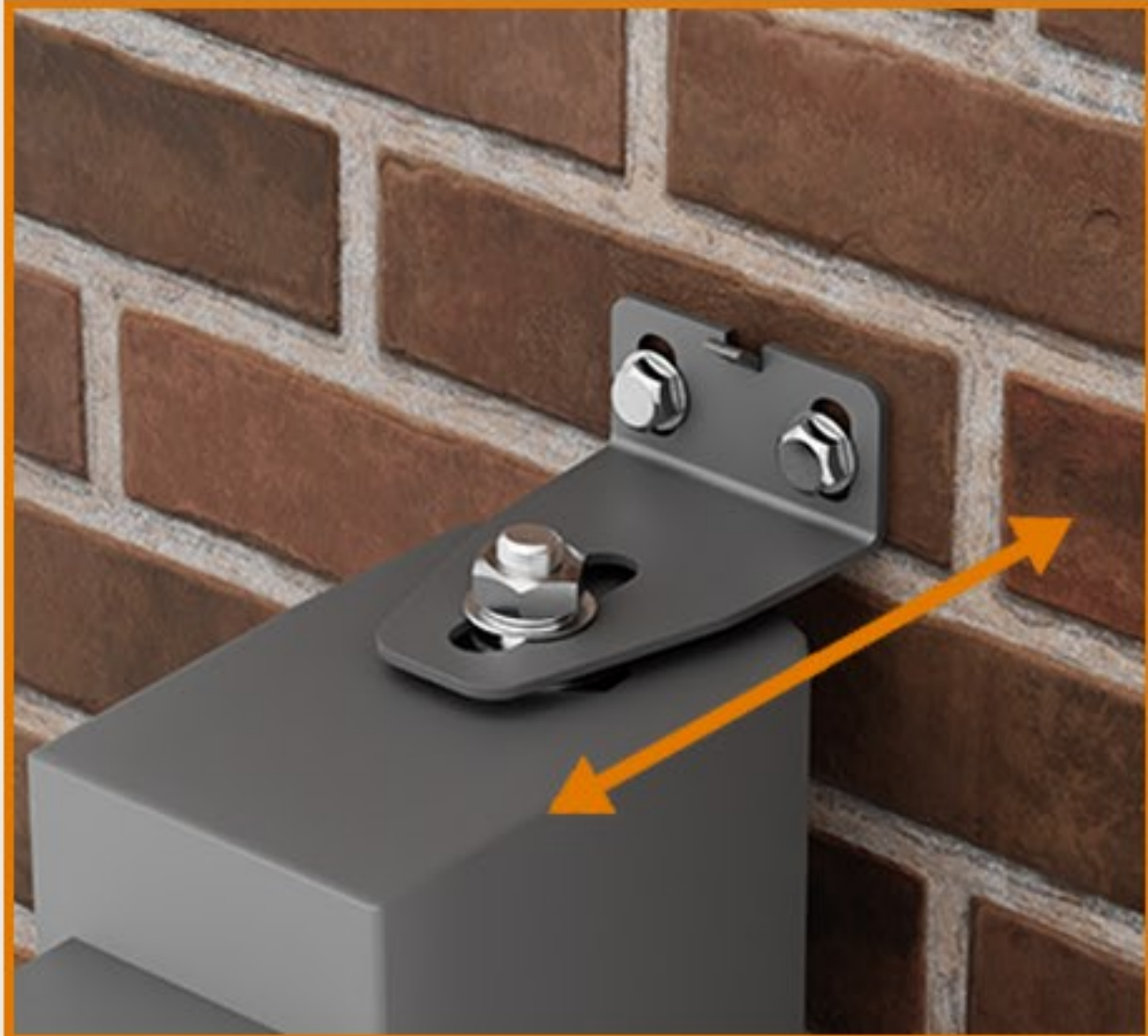
NOTES

- **10MM DRILL**
- **50MM MIN DEPTH**



9: FIX UPPER HINGE

**REPEAT
STEP 2 TO 9
FOR LH GATE**



2 X PLACES

10MM GAP

11: ADJUST UPPER HINGES





12: FIT COVERS - 4 X PLACES

PROJECT COMPLETE

