



TRITON

For a cleaner conscience

ENVI®

Next generation electric showers

User Guide

Welcome to ENVi®



ENVi® Thermostatic Electric DuElec® Diverter Shower in Black Trim

Product Information

- All new experience - Intuitive control with full colour digital display
- Get the look - Select from x3 premium finishes to match your bathroom style
- DuElec® - Seamlessly divert between a luxurious rainfall and 5 spray pattern shower head
- Personalisation - Create x6 individual time and temperature profiles
- Eco conscious - Shower a minute less and save water, save energy and save money
- User feedback - Water, Energy and Cost data on personal shower use
- Enhanced control - Tri-Protect® precise thermostatic temperature operation
- Phased shutdown - reducing unwanted scale build up
- Flexible installation - Tri-HUB can be located in the loft or airing cupboard
- Replacement installation - discover the ENVi® retrofit plate accessory to cover marks from the previous electric shower installation. Visit tritonshowers.co.uk/envi for more information



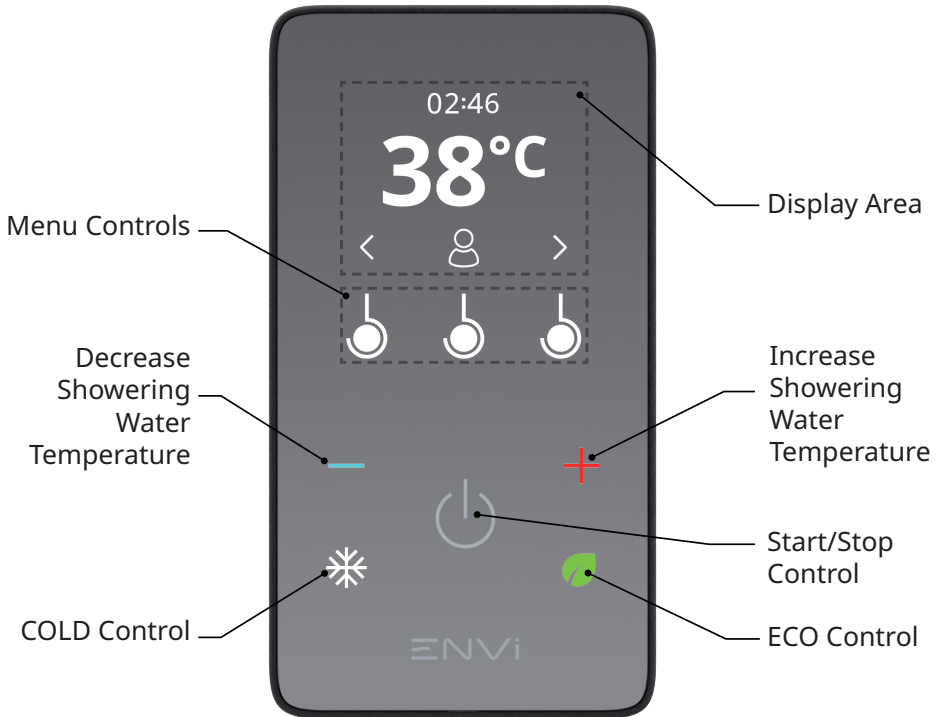
Contents

- 3 Product Information
- 5 ENVi® Controller Layout
- 6 Quick Start
- 7 Switching the Shower On
- 8 Adjusting the Temperature
- 9 ENVi® Mode and User Profiles
- 10 Switching the Shower Off
- 11 - 15 System Settings
- 16 - 19 Care and Cleaning
- 20 ENVi® Product Support

▲ WARNING ▲

This appliance can be used by children aged from 3 years and above and persons with reduced physical, sensory or mental capabilities or lack of experience and knowledge if they have been given supervision or instruction concerning use of the appliance in a safe way and understand the hazards involved. Children may not play with the appliance. Cleaning and user maintenance shall not be made by children.

ENVi® Controller Layout

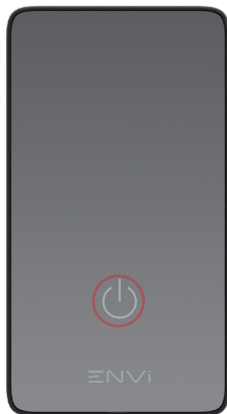


The function of each **Menu Control** adapts to the mode it is used in, and is denoted on-screen above each control by one of the following icons:

- ^ v - **Up/Down:** Navigate items within a menu or sub-menu.
- < > - **Left/Right:** Navigate User Profiles and options within a setting.
- ✓ - **Tick:** Confirm a selection within a menu or setting.
- ✗ - **Cross:** Reply 'No' to an on-screen prompt.
- ↶ - **Back:** Return to the previous menu.
- 👤 👤 - **Profiles:** select User Profiles whilst showering.

The **Menu Controls** will be referred to by their icon name throughout this guide (e.g. **Tick** control). Touch the corresponding **Menu Control** to browse the menu. On-screen icons are not touch controls.

Quick Start



Touch the Start/Stop icon (⏻) to start showering



Touch the — or + icons control to adjust the shower temperature



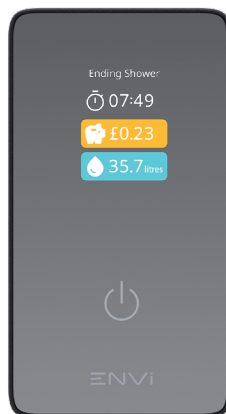
Touch the ❄️ icon to run the shower at ambient water temperature



Touch the 🌿 icon to reduce the shower timer by one minute



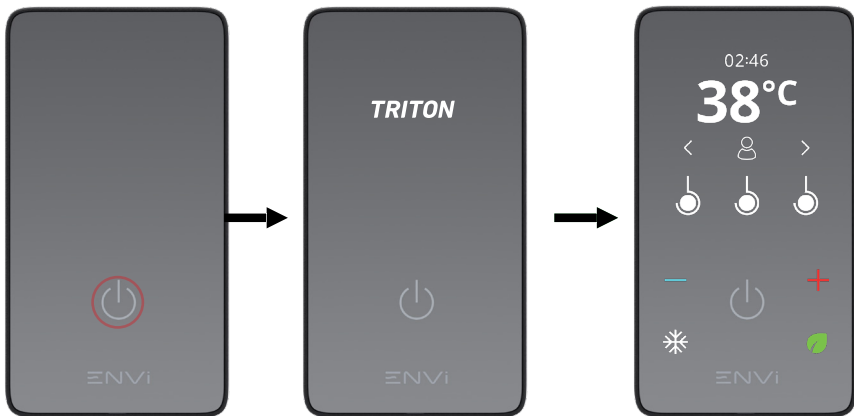
Touch the circular symbols under < and > chevrons to select a User Profile and touch the circular symbols under ✓ to confirm



Touch the Start/Stop icon (⏻) to stop showering and begin phased shut down

Switching the Shower On

Once commissioned, and upon connecting ENVI® to power, the Start/Stop icon (⏻) on the controller is illuminated, touch it to start showering. The shower temperature will be set to the Default Showering Temperature; the shower timer will also start counting down from the Default Showering Time. These default settings can be changed in the System Settings (pg.12).


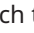


The temperature readout gradually fills blue, indicating how much of the timer has elapsed, in addition to the on-screen timer readout.

ECO Mode is great for your bills and for the planet: using it can save the average household* £85 and 50 kg of CO₂e every year!

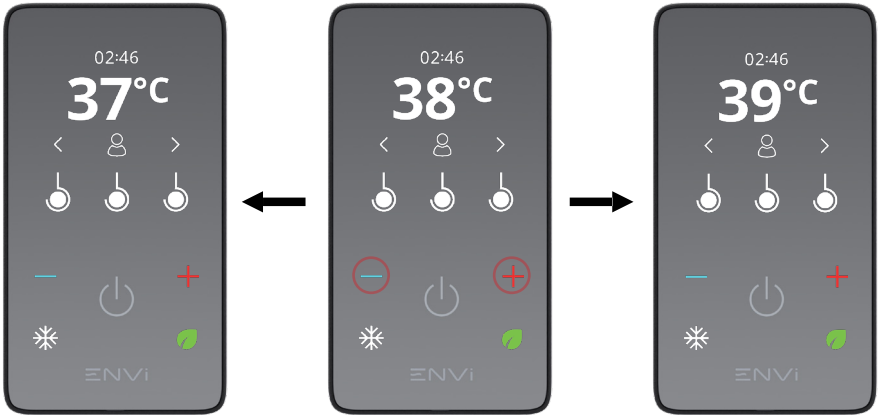
* based on 4 person household using the 9kW model



Touch the  icon whilst showering (with more than two minutes remaining on the timer) to activate ECO mode, which reduces the timer by one minute. The temperature readout fills green with ECO mode active. Touch the  icon again to deactivate ECO mode and restore one additional minute to the timer.

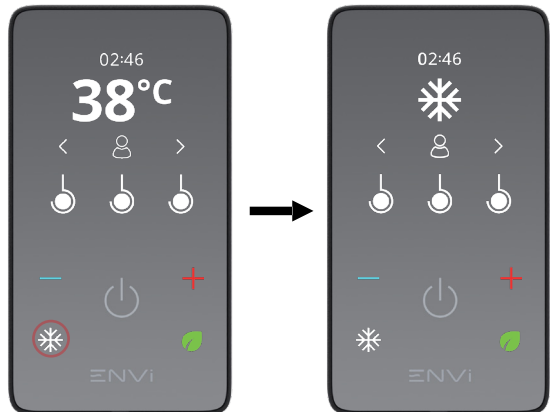
Adjusting the Temperature

The shower temperature can be digitally adjusted by touching the **—** and **+** icons, and it can be set between 32°C and 46°C in 1°C increments. The on-screen temperature display will flash whilst the water is warming or cooling to the shower temperature. ENVi® has thermostatic temperature control, which means the outlet temperature will remain constant even if water is being used elsewhere, ensuring reliable safety and comfort.



ENVi® automatically controls the flow and the power setting, ensuring that the shower runs as efficiently as possible, whilst providing the optimal thermostatic showering experience!

To run the shower at ambient water temperature without heating, touch the ❄️ icon. The shower temperature on the display is replaced by a snowflake whilst this setting is active, and the outlet temperature is not thermostatic. Touch the ❄️ icon again to return to the previously set shower temperature.

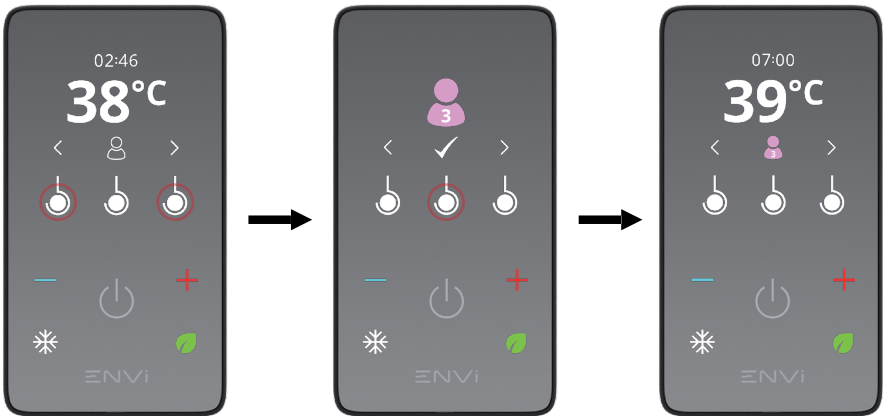


ENVi® Mode & User Profiles

ENVi® Mode activates the option of selecting one of six User Profiles whilst showering. Each User Profile can be configured in the System Settings to personalise shower temperature, duration and more.

Personalising a User Profile is a great way to perfect each showering experience. Not only is your ideal temperature delivered every time, you can be sure that your shower doesn't ever overrun, saving you time and money, whilst reducing your carbon footprint!


When switching on the shower, the Default Profile is selected and default settings are used. Touch the circular symbols under the < and > chevrons to browse between the user profiles and use the circular symbol under the ✓ to confirm selection.



Upon selecting a User Profile, the shower will automatically adjust the shower temperature and reset the timer to the personalised settings for that User Profile. The shower temperature can still be manually adjusted by touching the — and + controls.

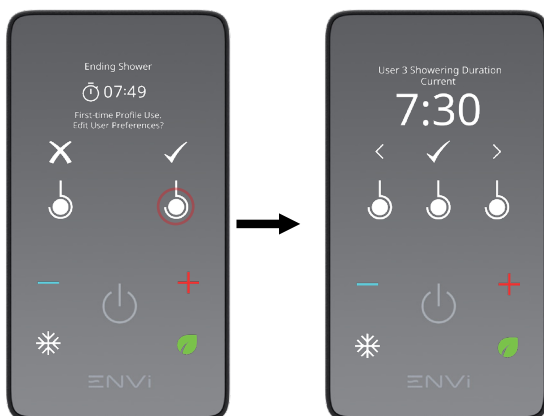
For a simplified showering experience, ENVi® Mode can be deactivated in the System Settings (pg.12), disabling User Profiles and limiting which usage statistics are available for viewing.

Switching the Shower Off

ENVi® will automatically shut down when the timer has elapsed, or if the Start/ Stop icon  is touched whilst showering. The shower will begin Phased Shut Down, which protects the ENVi® Tri-HUB from overheating by purging it of hot water before turning fully off. The duration of the shower and other usage statistics (if enabled) from the shower will be displayed. These statistics are allocated to the active User Profile, if one has been selected.



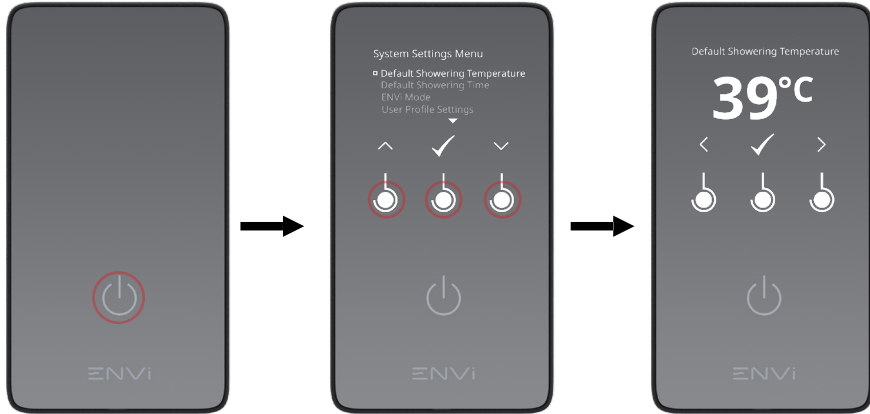
ENVi® can calculate and display the cost of showering at the end of every session! This can be enabled by entering Energy and Water Unit Prices in the System Settings (pg.14).



When ending a shower with a User Profile selected for the first time, the shower displays an option to navigate to the User Profile Settings menu for that User Profile, so that it can be personalised. Touch the circular symbols under the ✓ to navigate to the menu, or touch the circular symbol under the X to advance to the shut down screen.

System Settings

Touch and hold the Start/Stop icon (⏻) for three seconds whilst ENVi® is in Standby to enter the System Settings



Touch the circular symbols under the ^ and v chevrons to navigate menu items, and use the circular symbol under the ✓ to confirm selection.

Touch the circular symbols under the < and > chevrons to browse the options within a setting, and use the circular symbol under the ✓ to confirm changes.

Touch the circular symbol under the ↶ icon to navigate to the previous menu without saving changes. Touch the Start/Stop icon (⏻) whilst anywhere within the System Settings menu to exit System Settings and return to Standby.

Default Showering Temperature

This will set the shower temperature when no user profile is selected whilst showering.

Default Showering Time

This will set the initial duration of the timer, after which ENVi® will automatically stop and enter phased shut down.

ENVi® Mode

This will determine whether User Profiles can be activated whilst showering. If set as 'On' then User Profiles will be available for selection. If set as 'Off'; then User Profiles will not be available for selection, the Menu Controls will be hidden whilst showering, and some usage statistics will be unavailable to be viewed during Shut Down and the System Settings.

System Settings

User Profile Settings

This setting within this sub-menu, customises the showering experience when selecting a User Profile during showering. Select a User Profile from the sub-menu to view and adjust its individual settings.



User Showering Temperature

This will set the shower temperature when the respective User Profile is selected during showering.

User Showering Time

This will set the duration of the timer when the respective User Profile is selected during showering.

On-screen Shower Timer

This will determine whether the timer is displayed or not with the respective User Profile selected. If set to 'Off', although hidden, the timer is still active and ENVI® will shut down once it expires.

Sound

This will determine whether the controller provides audible feedback when a control is touched whilst showering with the respective User Profile selected.

System Settings

View Usage Data

Usage statistics that have been allocated to a User Profile at the end of a showering session can be viewed in this sub-menu. Showering Duration and Water Usage is displayed; Cost will also be displayed if Unit Prices have been set for both Energy and Water. Touch the circular symbols under the < and > chevrons to cycle through User Profiles when viewing usage statistics.

Last Shower Usage Data

This will display the usage statistics from the most recent showering session for each User Profile.

Average Shower Usage Data

This will display the average usage statistics across the five most recent showering sessions for each User Profile, and also the average usage statistics of all users combined.

Reset Usage Data

This will delete and reset all usage data for each User Profile.

Monitoring your household's usage data provides a great benchmark when looking to reduce your bills and carbon footprint. Reducing a User Showering Time to below their average duration ensures that they are saving!



The cost of showering is calculated using the total water and energy used per shower, along with the unit prices for each. Any adjustment to the Energy or Water Unit Price is not retrospective and only applies when calculating the usage of future showering sessions.

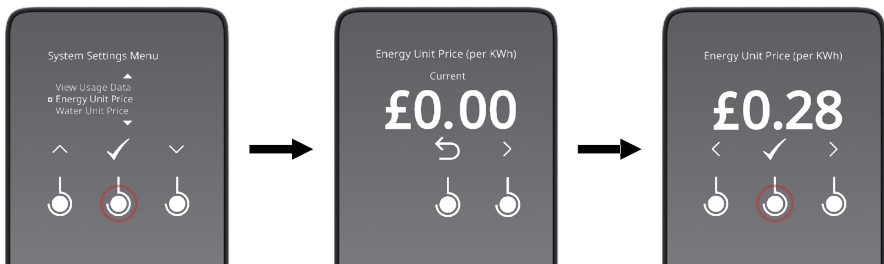
The usage statistics that are calculated by ENVi® are a best estimate, and should only be used as a relative comparison between users, tracking trends over time and assist with choosing personalised User Profile settings. Exact statistics contain a margin of error, and therefore they should not be used or quoted in any other capacity.

System Settings

Energy Unit Price

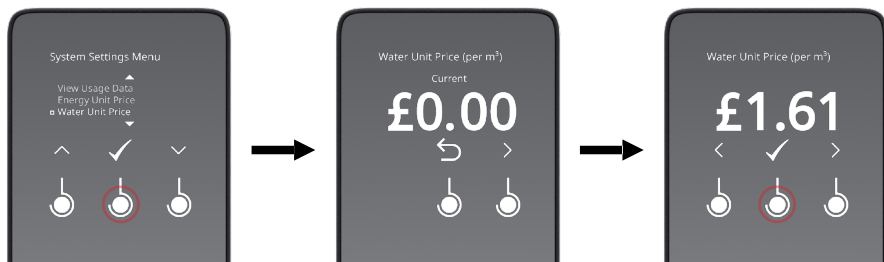
This will set the unit price for the energy used by the shower, which contributes toward the cost calculation within usage data. Please refer to your energy bill and look at the cost per kWh (kilowatt hour) of energy. If this value is set to £0, Cost will not be calculated and will not be displayed during shut down or in the View Usage Data sub-menu. The Water Unit Price must also be set to allow ENVi® to calculate and display the cost of showering.

Cost will not be calculated and will not be displayed during shut down or in the View Usage Data sub-menu. The Water Unit Price must also be set to allow ENVi® to calculate and display the cost of showering.



Water Unit Price

This will set the unit price for the water used by the shower, which contributes toward the cost calculation within usage data. Please refer to your water bill and look at the cost per m³ (cubic metres) of water (total the rate for both water supply and drainage, if applicable). If this value is set to £0, Cost will not be calculated and will not be displayed during shut down or in the View Usage Data sub-menu. The Energy Unit Price must also be set to allow ENVi® to calculate and display the cost of showering.



System Settings

Freezing Precaution

This will perform the Freezing Precaution routine. Please refer to the installation guide for further information.

Thermal Purge

This will perform the Thermal Purge routine. Please refer to the installation guide for further information.

Software Version

This displays the software versions for both the controller and the Tri-HUB. These versions may need to be referred to when using the ENVI® Product Support page or contacting Triton Customer Experience.

Factory Reset

This will reset the shower back to its factory settings. A factory reset can be performed with or without resetting the showering usage data. Should any problem not be resolved by a factory reset without resetting the usage data, perform another reset to include resetting the usage data.

Care and Cleaning

General Notes

Fitting the correct type of shower head or fixed head is critical to the safe performance of your shower, especially if you have an electric shower. Some shower heads are only suitable for use on mixer showers as the flow of water from them can be restricted or stopped completely if used on an electric shower, which can result in a build-up of potential hot water which could, under pressure, be unexpectedly released.

You can therefore, rest assured when you order a genuine Triton electric shower head or fixed head that it has been fully tested for use in the UK on all electric shower types.

Cleaning the Shower Accessories

Triton recommends that all products are cleaned using warm, soapy water.

DO NOT use abrasive or aggressive chemical cleaning products as this may affect the product surface and finish.

Before cleaning, turn off the Tri-HUB at the mains supply to avoid the shower being accidentally switched on. The shower head and fixed head may be cleaned by simply rubbing your thumb over the spray plate.

IT IS IMPORTANT TO KEEP THE SHOWER HEAD AND FIXED HEAD CLEAN TO MAINTAIN THE PERFORMANCE OF YOUR ENVi® SHOWER.

The hardness of the water will determine the frequency of cleaning. For example, if used every day in a very hard water area, it may be necessary to clean the shower head and fixed head on a weekly basis.

Cleaning the ENVi® controller

It is recommended that your ENVi® controller is cleaned regularly with warm, soapy water using a micro fibre cleaning cloth (e.g. E-cloth) or sponge **ONLY**.

The ENVi® controller should only be cleaned when the Tri-HUB is isolated from power.

Many household cleaners contain abrasive and chemical substances and should not be used for cleaning the ENVi® Controller or any of the shower accessories and fittings.

DO NOT use a general purpose cleaning cloth e.g. J-cloth, dish cloth or scourer.

DO NOT use abrasive or aggressive chemical cleaning products as this may affect the product surface finish and invalidate your guarantee.

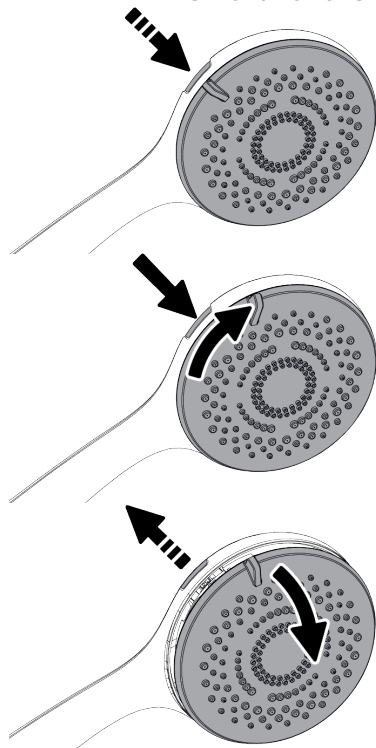
Care and Cleaning

Shower Head

Five shower head spray patterns are available.

Adjust the spray pattern by turning the lever on the shower head in either direction until the desired pattern is obtained. These positions are located at 4, 5, 6, 7 and 8 o'clock, when the shower head is in the vertical position.

Removal of the Spray Plate for De-Scaling



1. Rotate the spray plate clockwise until it reaches the stop position facing the removal button.
2. Press and hold the removal button.

3. With the removal button held in, rotate the face plate clockwise past the button until it stops.

4. Release the button and gently pull the face plate away from the body using the adjustment lever.

DO NOT remove the inner plate. Removing this will invalidate any product warranty.

IMPORTANT

Should any difficulty arise when trying to remove the spray plate, **DO NOT** try to force it out of the body by hand or by using tools such as a screwdriver. Reset the spray plate to the lock position shown in step 6 and repeat steps 1-4.

Care and Cleaning

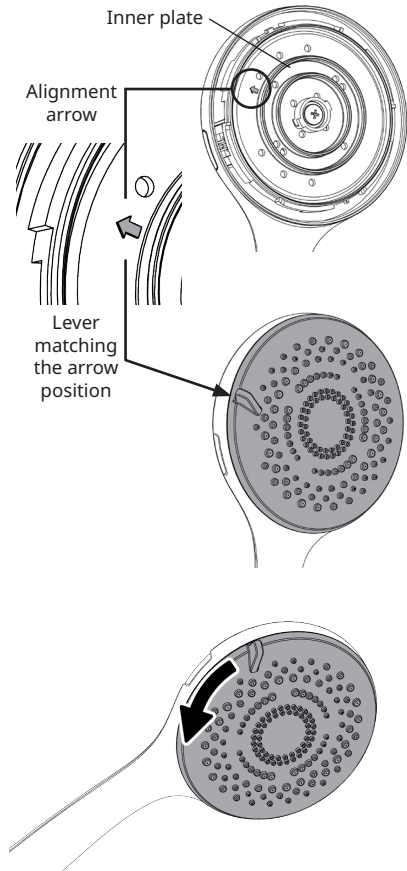
Replacing the Spray Plate

5. The spray plate and face plate **MUST** be aligned correctly for re-installation.
 - a. Ensure that the inner plate is turned fully clockwise until it stops. The alignment arrow position is approximately 9 o'clock when the shower head is in the vertical position.
 - b. Align the lever with the arrow position and gently press the spray plate until the edges sit flush with the body of the shower head.

Should any difficulty arise, DO NOT try to force the spray plate back into position. Please ensure the arrow and lever positions are correct.

6. Once in place, to lock the spray plate back into the mechanism, it **MUST** be rotated fully anti-clockwise until it stops.

IMPORTANT: The shower head should be directed towards waste and the shower switched on to ensure the spray plate is locked into the mechanism before use.



Care and Cleaning

Inspecting the Shower Hose

Your shower hose should be inspected from time to time for signs of damage or internal collapse.

Internal collapse can restrict the flow rate from the shower head and may cause damage to the shower, especially an electric shower.

Triton recommends use of a branded anti-twist hose on all showers to ensure continuous safe performance.

To inspect your hose:

- 1. Unscrew the hose from the shower head and the outlet connection.**
- 2. Inspect the hose for damage, internal kinks, etc.**
- 3. If necessary, replace the hose.**

Tri-HUB Battery Warning

The ENVi® Tri-HUB utilises a rechargeable LIR2032 3.6V or 3.7V coin battery for Freezing Precaution checks to occur whilst the system is not connected to power. If this battery requires attention, the controller indicates a battery warning in the top-left corner of the display whilst showering.



A low battery warning is indicated by a white icon.

This means that the fitted battery is significantly drained, and that it needs to be recharged or replaced with a fresh battery. To recharge the battery and reset the low battery warning, connect ENVi® shower system to power for an hour.

A no battery warning is indicated by a red icon.

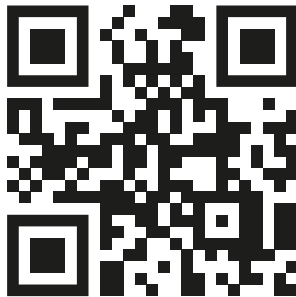
This means that the Tri-HUB does not detect that a battery is present in the unit. This could be because that the battery is fully drained, damaged or missing.

In any case, the battery needs replacing.

Replacement of the battery must be carried out by a suitable person, refer to the installation instructions for further information.

Replacement Parts

Visit www.tritonshowers.co.uk/shower-accessories or scan the QR code below to find genuine Triton **ENVI**⁺ shower accessories.
Next generation electric showers



tritonshowers.co.uk/envisupport

For latest service policy and contact details visit www.tritonshowers.co.uk