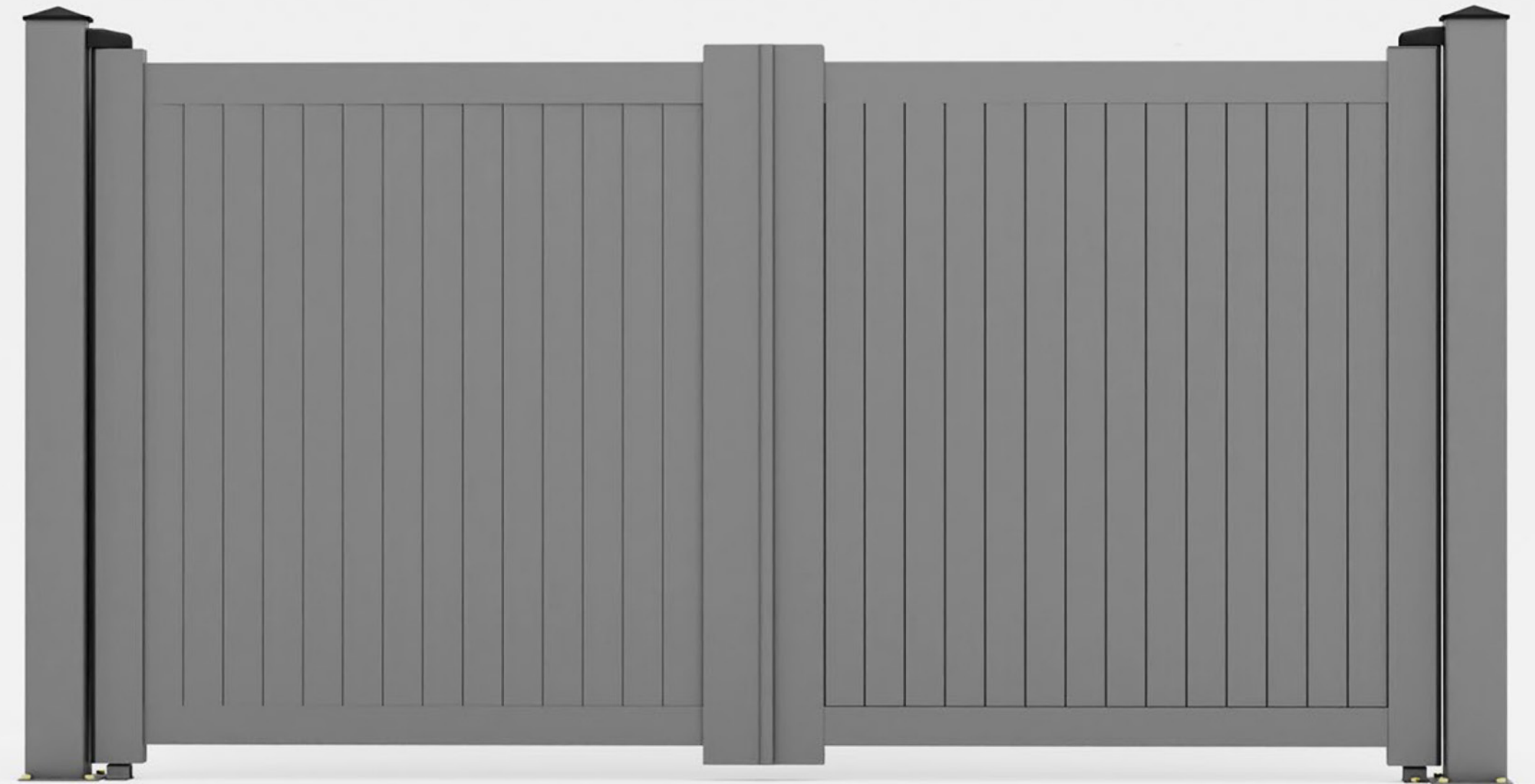


INSTALLATION FITTING INSTRUCTIONS
ALUMINIUM DOUBLE
DRIVEWAY GATE
(BETWEEN POSTS)



CONTENTS

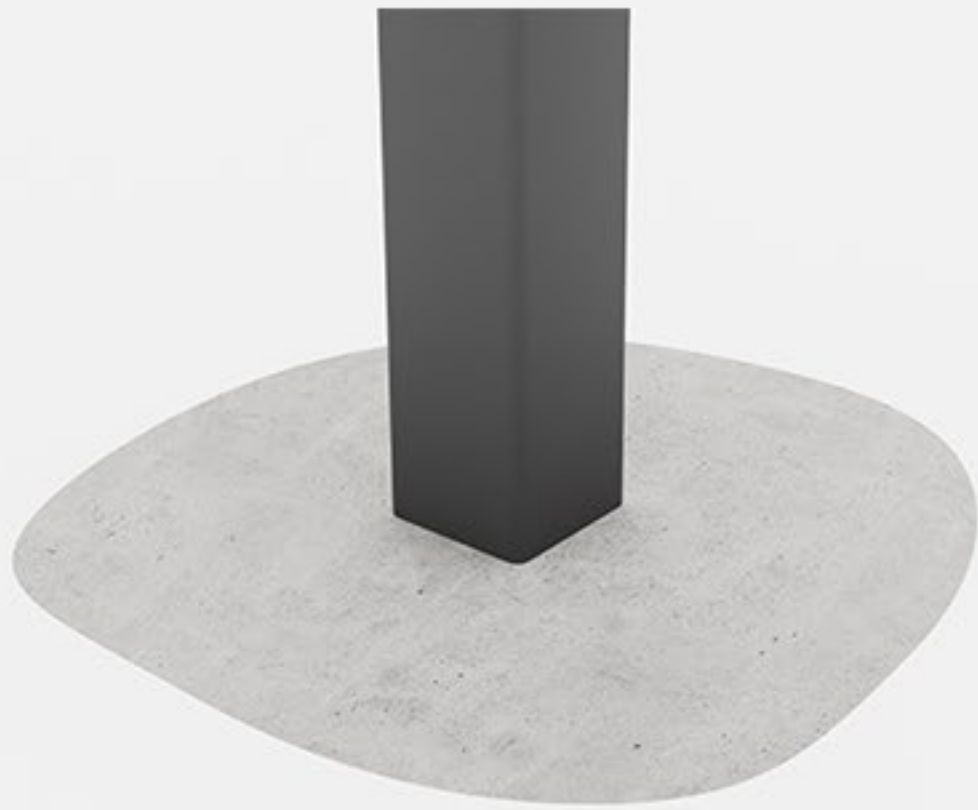
- 1. MARK POSITION OF POSTS**
- 2. FLOOR OR CONCRETE MOUNT**
- 3. DRILL FLOOR BOLTS**
- 4. FIX TO FLOOR**
- 5. DIG POST HOLES**
- 6. CUT 2 X POSTS TO LENGTH**
- 7. CONCRETE POSTS**
- 8. FLOOR SPIGGOT**
- 9. PRE-ASSEMBLE LOWER SPIGGOT**
- 10. FIX LOWER HINGE TO FLOOR**
- 11. ASSEMBLE UPPER SPIGGOT**
- 12. LOAD GATE - HOLD SQUARE**
- 13. MARK UPPER HINGE POSITION &
DRILL POST**
- 14. FIX UPPER HINGE**
- 15. REPEAT STEPS 8-15 FOR L.H. GATE**
- 17. ADJUST UPPER HINGES**
- 18. FIT COVERS – 4 X PLACES**

1: MARK POSITION OF POSTS

**GATE WIDTH
+ 30MM - 60MM**

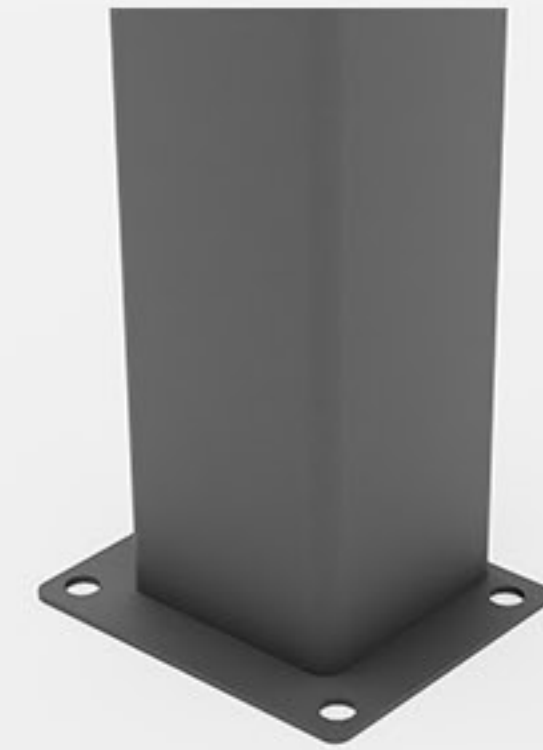


2: FLOOR OR CONCRETE MOUNT



**CONCRETE -
GO TO STEP 5**

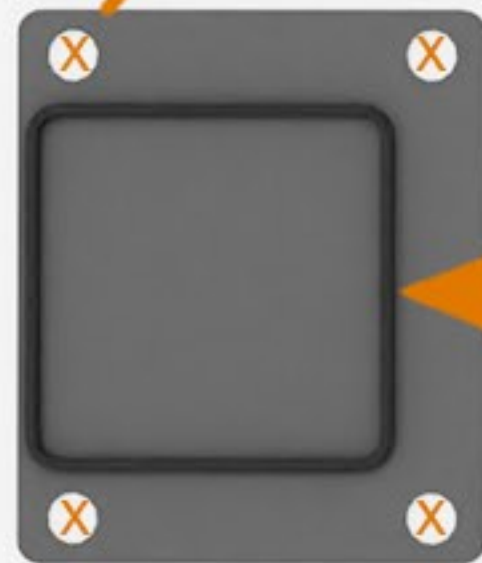
OR



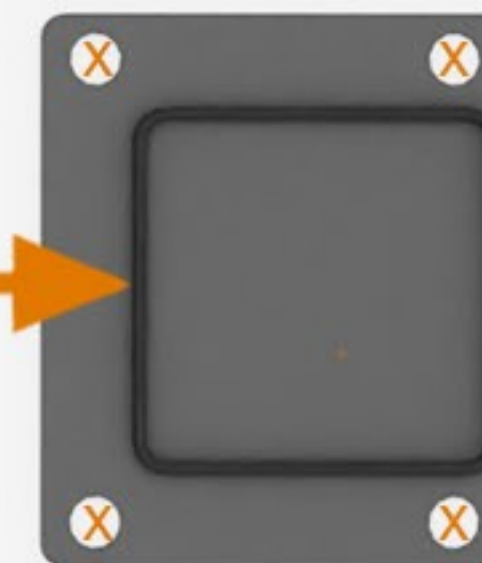
**FLOOR MOUNT -
GO TO STEP 3**

3: DRILL FLOOR BOLTS

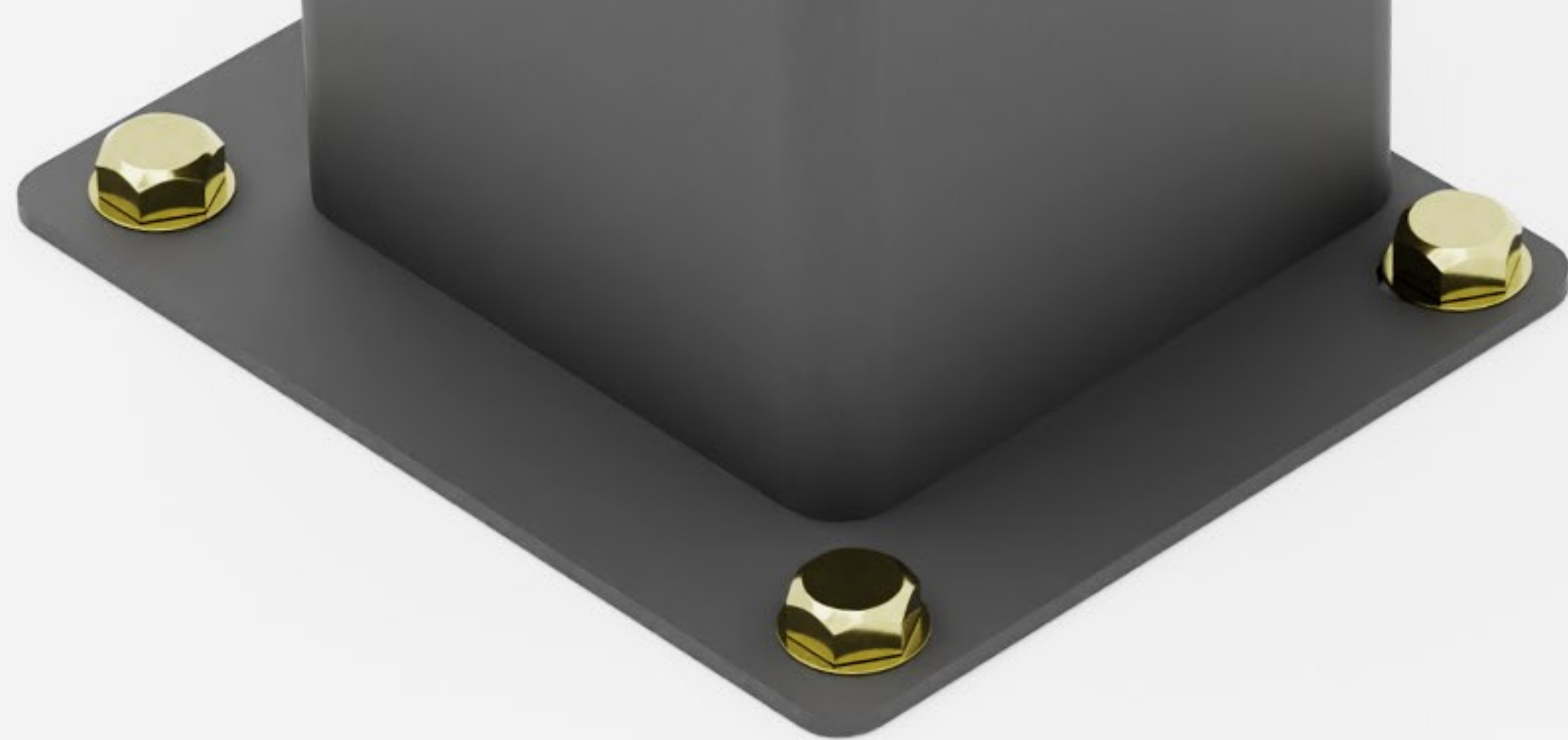
10MM DRILL - 8 PLACES



GATE WIDTH
+ 30MM



4: FIX TO FLOOR



GO TO STEP 8

NOTES

- M10 X 75MM BOLTS
- 8 X PLACES
- WRENCH OR SOCKET SET



***FOR CONCRETE MOUNT ONLY**

5: DIG POST HOLES

**DIG 2 x POST HOLES
MINIMUM 500MM
BELOW GROUND LEVEL**



6: CUT 2 X POSTS TO LENGTH

**GATE HEIGHT
+ 100MM FROM
GROUND LEVEL**



7: CONCRETE POSTS

SET WIDTH BETWEEN POSTS
GATE WIDTH + 30MM

USE QUICKSET CONCRETE

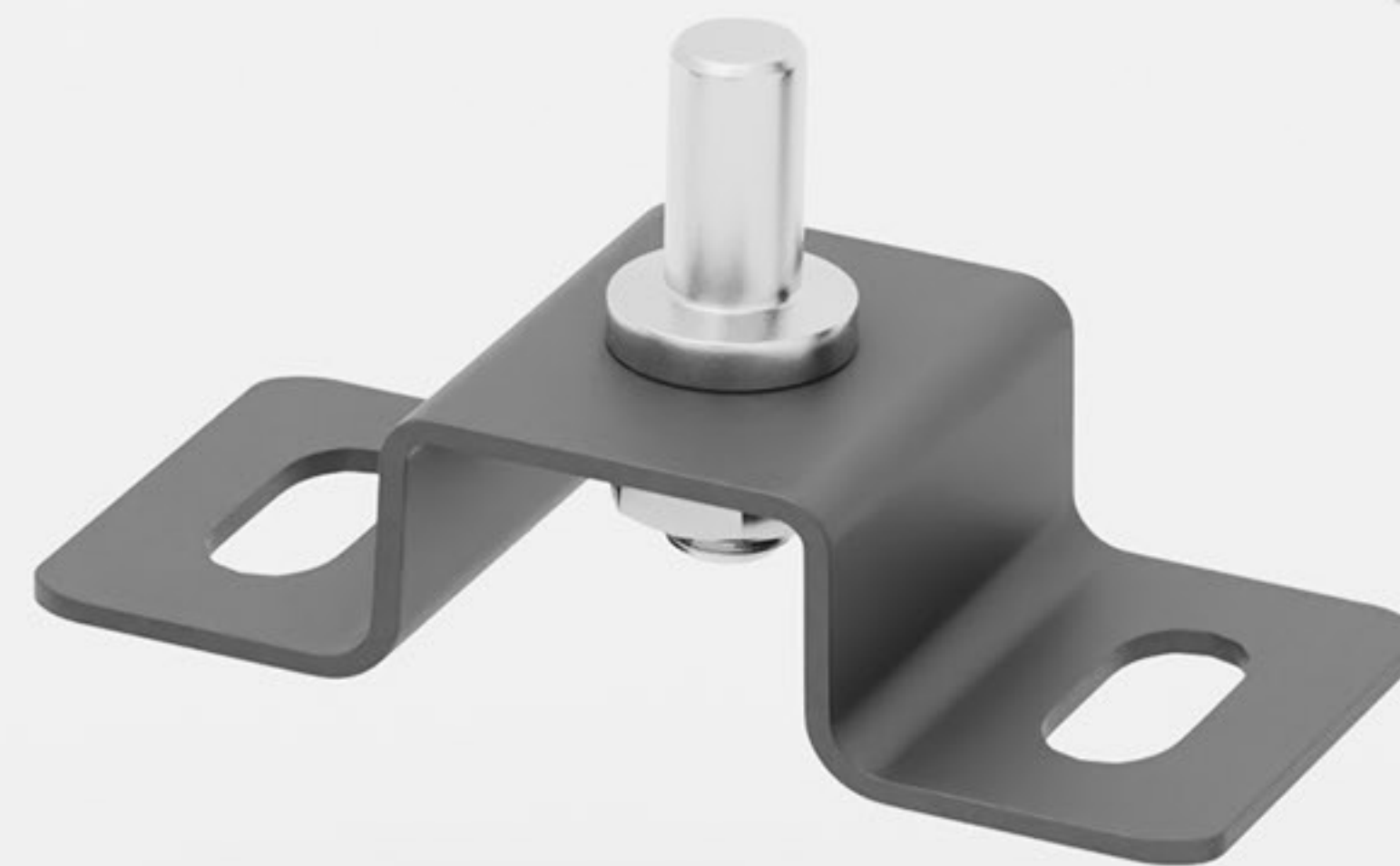
ENSURE POSTS ARE
SQUARE IN BOTH AXIS



NOTES

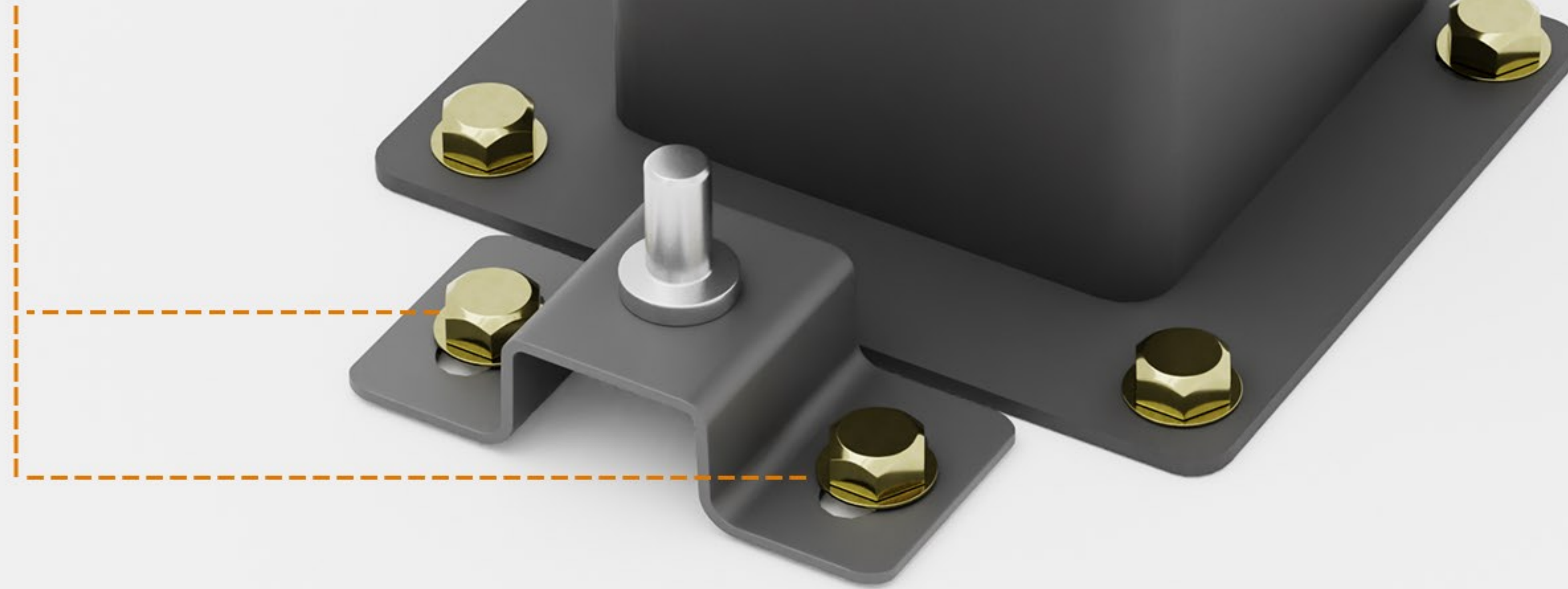
- BRACKET TO POST
40MM MIN
60MM MAX
- DRILL 2 x PLACES
- 10MM DRILL





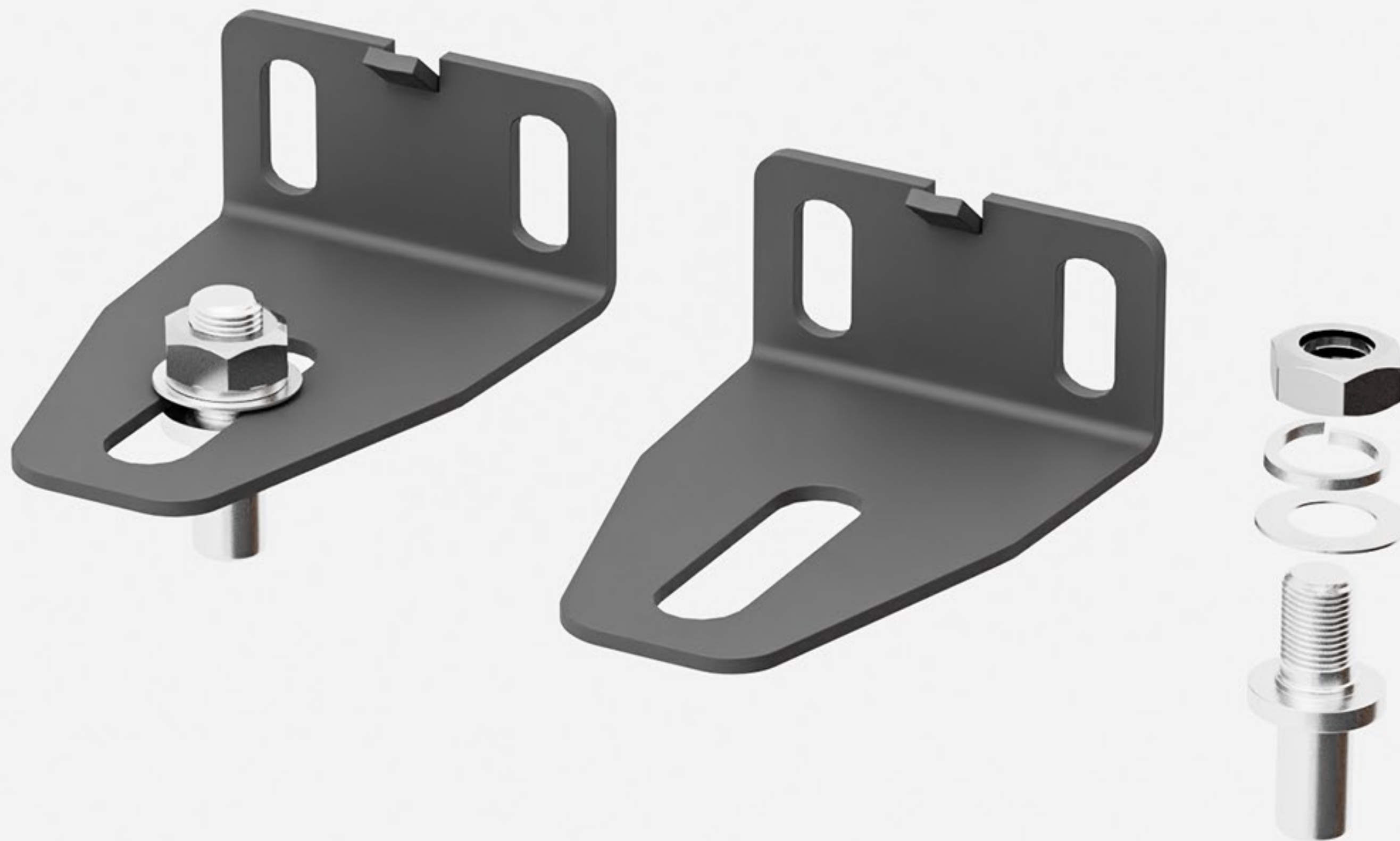
9: PRE-ASSEMBLE LOWER SPIGGOT

**M10 BOLTS
2 x PLACES**



10: FIX LOWER HINGE TO FLOOR

11: ASSEMBLE UPPER SPIGGOT



NOTES

- OPPOSITE TO LOWER BRACKET

12: LOAD GATE - HOLD SQUARE



NOTES

- HOLD GATE SQUARE
- LOAD UPPER HINGE
- MARK 2 X PLACES



13: MARK UPPER HINGE POSITION

NOTES

- DRILL 2 x PLACES
- 12MM DRILL



13: DRILL POST

NOTES

- 2 x M12 x 35MM
- 2 x M12 NUTS
- 4 x WASHERS



14: FIX UPPER HINGE

REPEAT
STEP 8 TO 15
FOR LH GATE

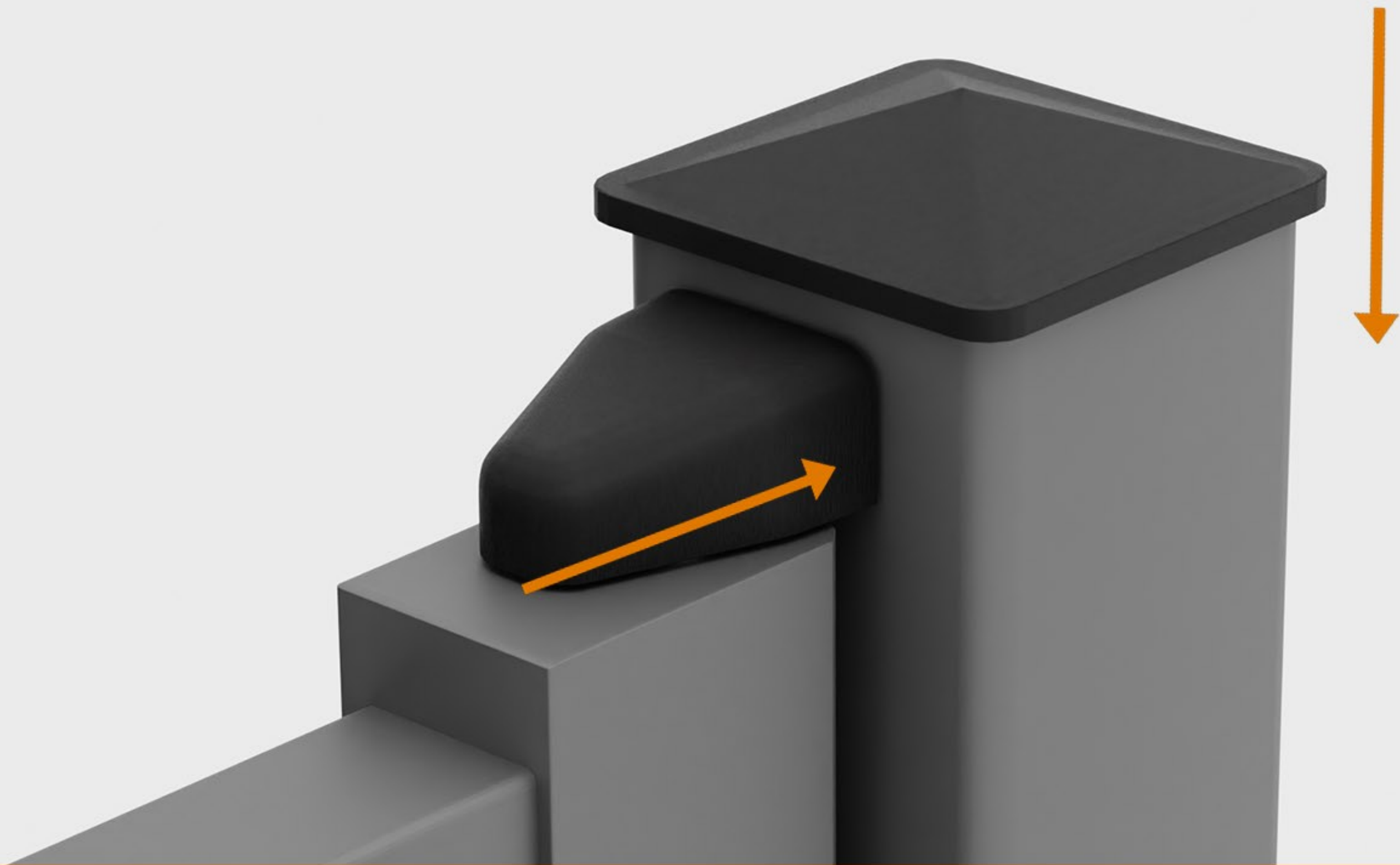


2 X PLACES

10MM GAP

17: ADJUST UPPER HINGES





18 : FIT COVERS - 4 X PLACES

PROJECT COMPLETE

