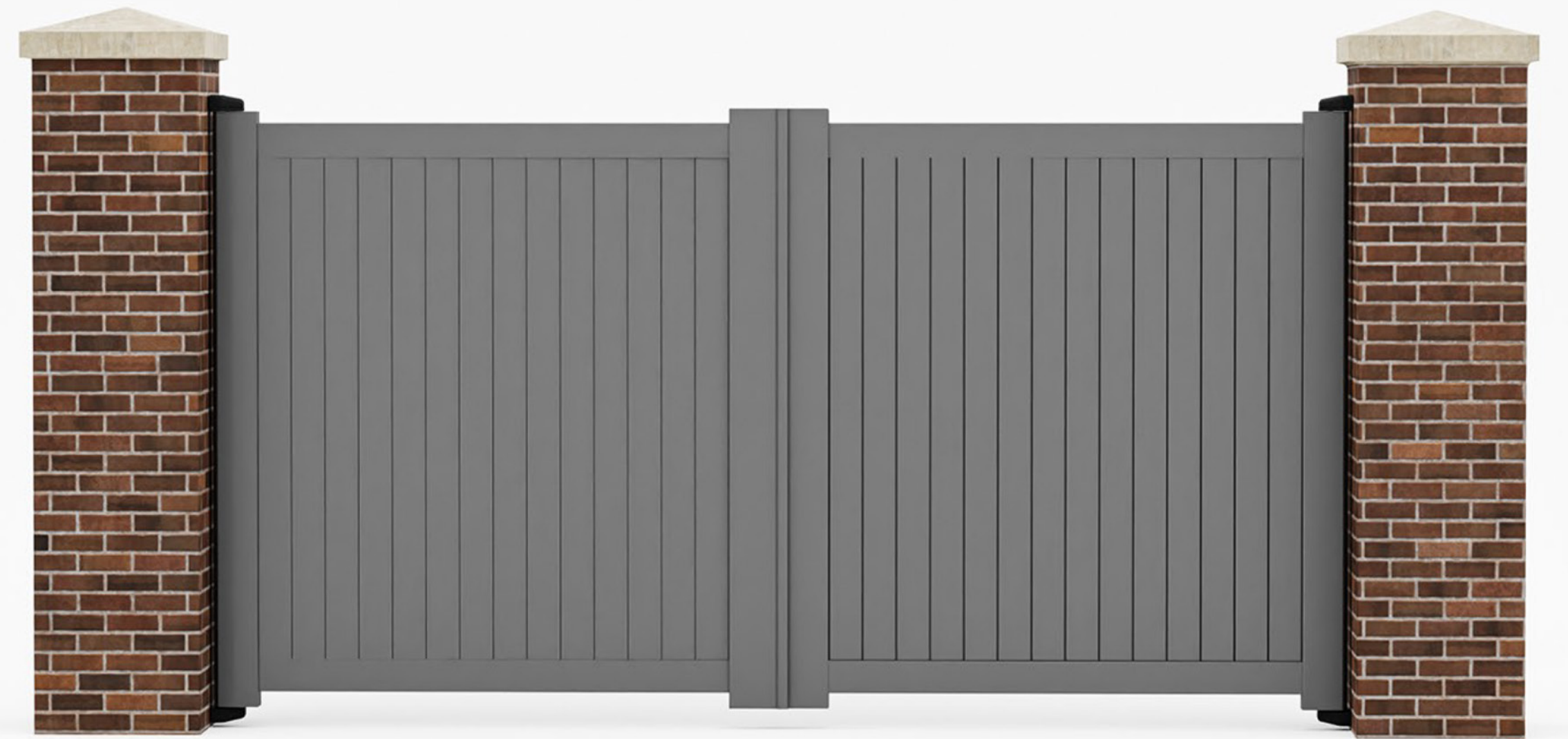


INSTALLATION FITTING INSTRUCTIONS

ALUMINIUM DOUBLE DRIVEWAY GATE

(BRICK TO BRICK USING
WALL MOUNTED HINGES)



CONTENTS



- 1. CHECK WIDTH OF OPENING**
- 2. MARK LOWER BRACKET**
- 3. PRE-ASSEMBLE LOWER SPIGGOT**
- 4. FIX LOWER HINGE TO WALL**
- 5. LOAD GATE – HOLD SQUARE**
- 6. ASSEMBLE UPPER SPIGGOT**
- 7. MARK UPPER BRACKET**
- 8. DRILL HOLES X 2**
- 9. FIX UPPER HINGE**
- 10. REPEAT STEPS 2-9 FOR L.H. GATE**
- 11. ADJUST UPPER HINGES**
- 12. FIT COVERS – 4 X PLACES**



1: CHECK GATE WIDTH



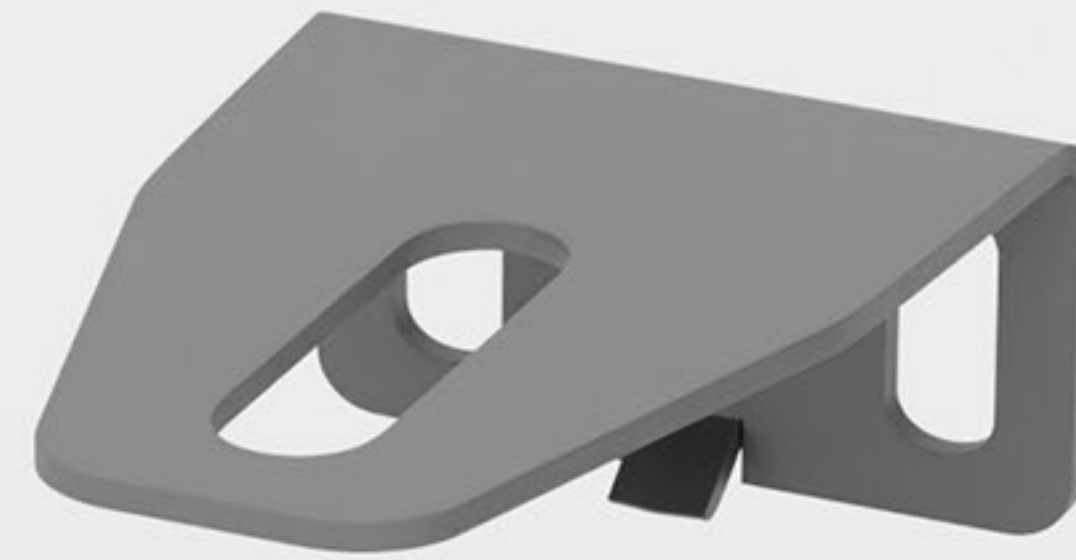
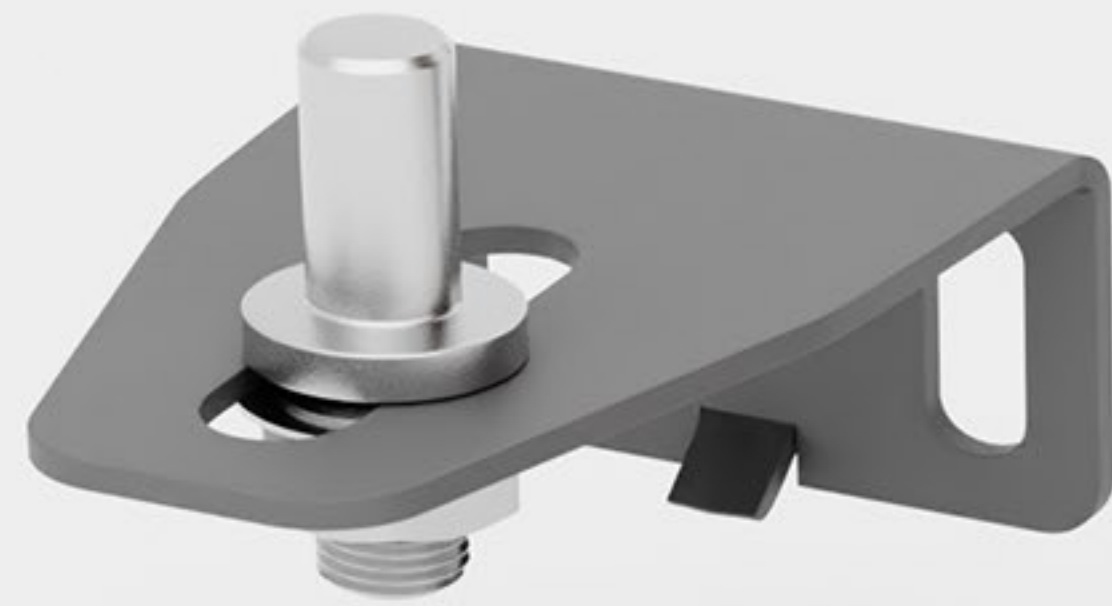


NOTES

- 2 X PLACES
- 10MM DRILL



2: MARK & DRILL LOWER BRACKET



3: PRE-ASSEMBLE LOWER SPIGGOT



**M10 BOLTS
2 x PLACES**

4: FIX LOWER HINGE TO WALL

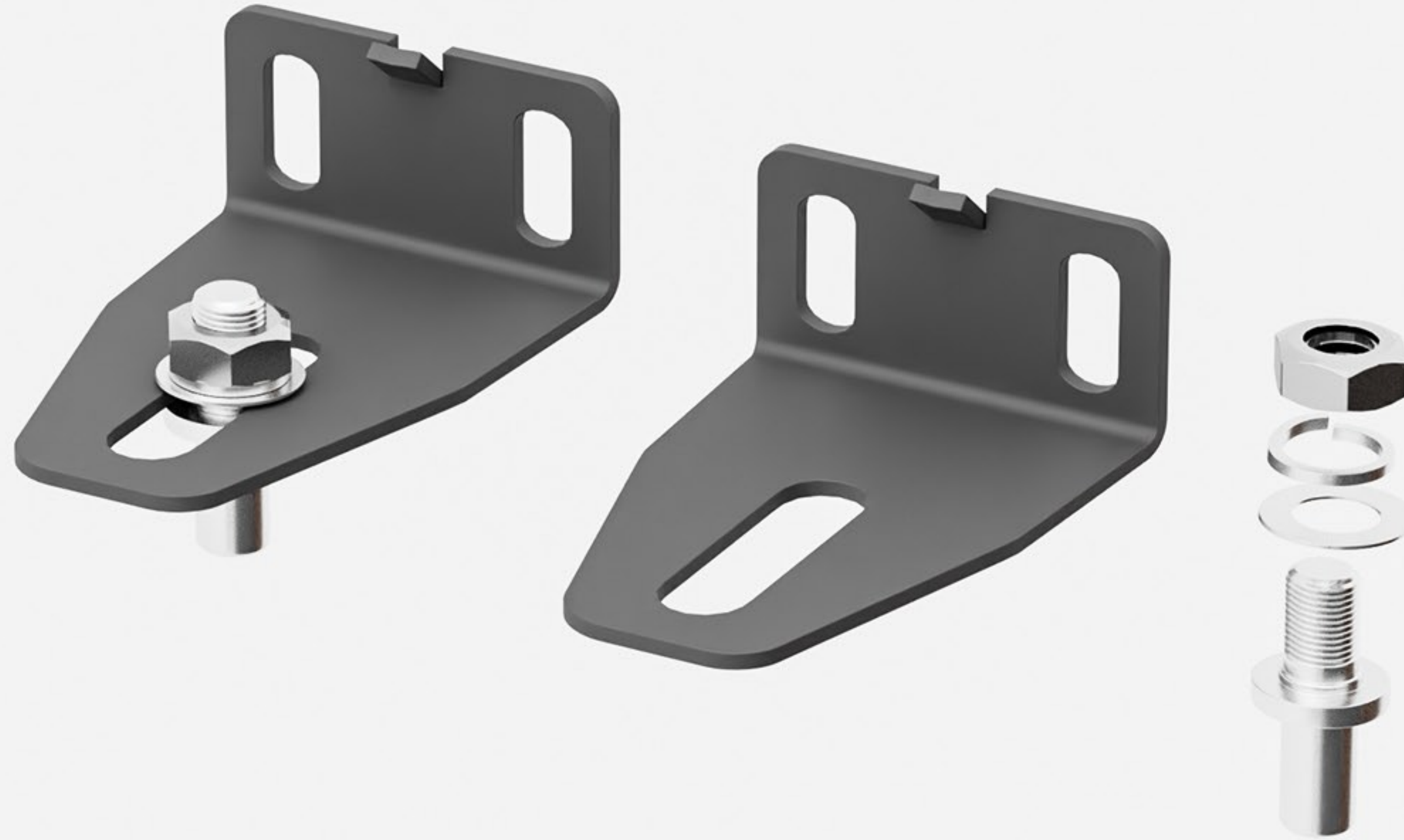


5: LOAD GATE - HOLD SQUARE



TWO PERSON LIFT ADVISED

6: ASSEMBLE UPPER SPIGGOT



NOTES

- OPPOSITE TO LOWER BRACKET

7: MARK UPPER BRACKET



NOTES

- HOLD GATE SQUARE
- MARK 2 X PLACES





8: DRILL HOLES x 2



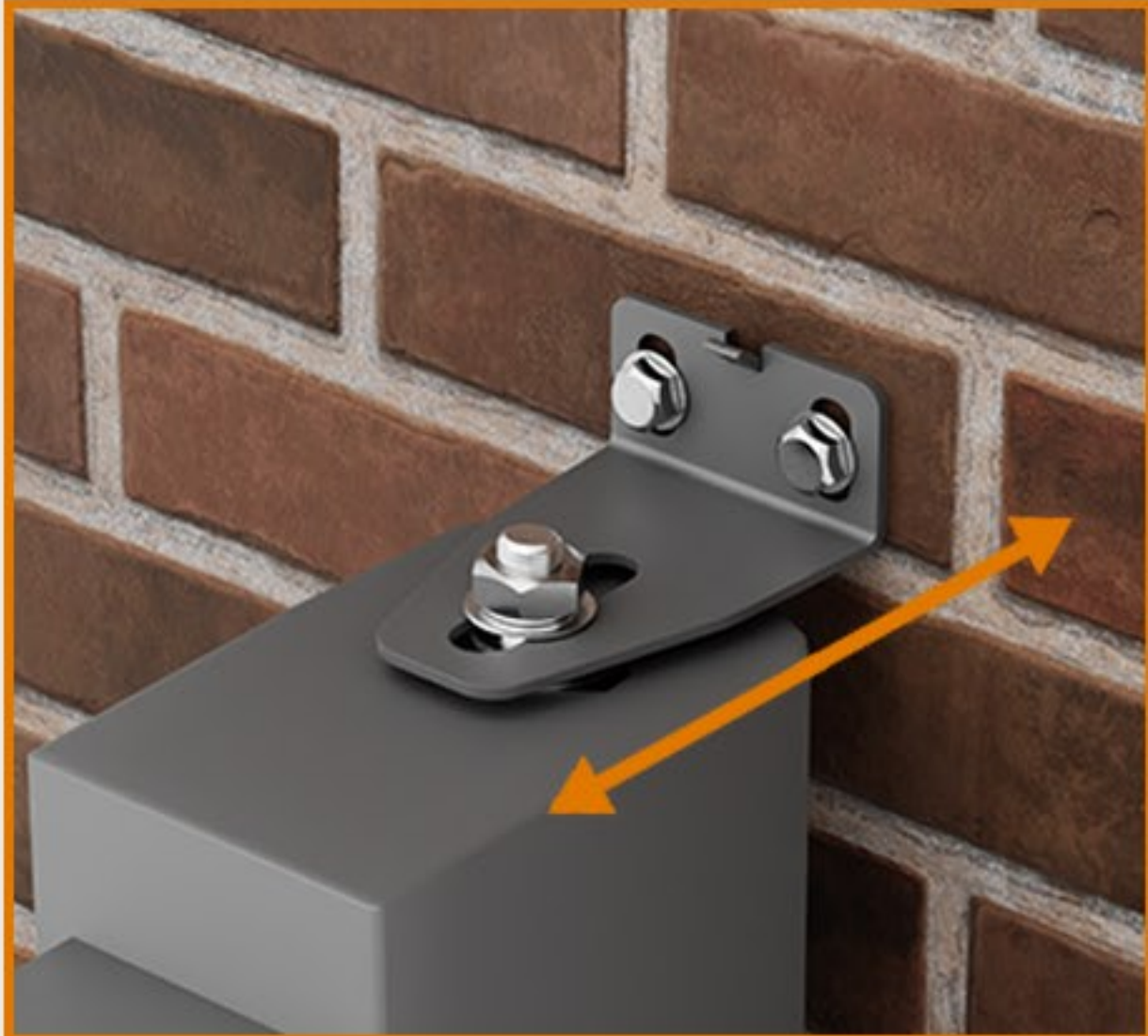
NOTES

- **10MM DRILL**
- **50MM MIN DEPTH**



9: FIX UPPER HINGE

**REPEAT
STEP 2 TO 9
FOR LH GATE**



2 X PLACES

10MM GAP

11: ADJUST UPPER HINGES





12: FIT COVERS - 4 X PLACES

PROJECT COMPLETE

