



The Most Important Tool for Your Knees!

M'ALPINE Kneepads

POCKET KNEEPADS KP-P

Pain Relief for Knees That Work

REDUCE KNEE & BACK PAIN

COMFORT & PROTECTION

ONE SIZE FITS ALL

WASHABLE AT 30°C

ROBUST & LONG LASTING



M'ALPINE Kneepads

Materials
Weight: 0.45kg
Dimensions: Length 200mm, Width 170mm, Depth 20mm
Product composition Redbacks® pad: TPE 100% recyclable
Cover: Neoprene, SBR, CR, PET, Nylon, Polyester

McAlpine & Co Ltd
 info@mcalpinekneepads.com
 www.mcalpinekneepads.com

Patents
United Kingdom 2467646
Europe 2393387
USA 9015862
Canada 2751632
China 102395286A
Australia 2010212195
New Zealand 595004
South Africa 2011/06463

Protects your knees from debris on the floor.

Bonus Feature

16mm penetration protection



McAlpine Kneepads with Redbacks Cushioning Technology meet and surpass the PPE requirements of BS EN 14404:2004+A1:2010 (UK DD99F1) which is a Upright Work Pad 1? ok UKX. La YbXX for a Type 2 level 1 knee pad.

NotfXX Body 277, SATRA Technology Europe, Bracetown Business Park, Clonee, D15 NZP, Republic of Ireland.

sdafg YX ccm++z5H5Hwbc[mzvbyzk mXLa K UntrZrXK Un 7YtrfP] zBcmLa dHcbg [YzBB% . c8zi b]XX? p]Xca

Patented Worldwide
 Redbacks | registered in the UK

F Repeat this for the other leg and your knee pads are ready for use so get working!

E To secure the knee pad, place two fingers inside the pocket and you will feel a flap. Pull this outside pocket to fix knee pads in place.

D The back side of the cover faces away from the knees. Push the knee pad firmly into the pocket allowing it to grip the tapered end points downwards.

G McAlpine Kneepads are designed to fit tightly. Squeeze the knee pad firmly and insert into the pocket opening.

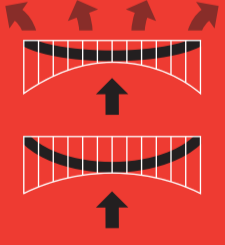
B The knee pad should be inserted into the opening of the trouser pocket.

A Position the coloured side of the fabric cover to face the knee with the tapered end of the knee pad pointing downwards.

Fitting Instructions

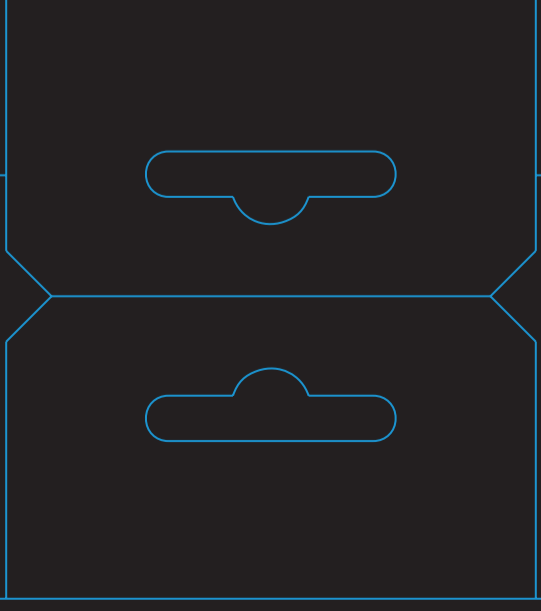
Unlike Foam and Gel, McAlpine Kneepads have 100% recovery. The kneepads are breathable, and when washed do not have to be extracted from your workwear trousers.

Redbacks patented system uses 28 flexible leaf springs embedded within a honeycomb matrix to absorb and spread weight. Unlike any other kneepads the technology disperses pressure away from the knee to provide unrivalled comfort and protection.



The Science Behind the Technology

Helping you work in harmo-knee
 (sorry, that was a bit cor-knee)



McALPINE)kneepads

User Information

Working on the knee can at times be a painful business. It has been found that workers on their knees either extensively or intermittently for work are at risk of developing a number of chronic knee conditions. The mechanical compression arising from kneeling on hard surfaces has been medically linked in several studies to bursitis and other knee disorders.

McAlpine kneepads powered with Redbacks® Technology have been uniquely designed to reduce the load on the knee, using a combination of Thermoplastic elastomers (TPE), polyester spacer fabrics and elastic.

McAlpine kneepads have been designed for users who work for a period of time in a kneeling position but not exclusively for long periods on their knees.

McAlpine kneepads are designed for the user to get up and down on their knees and have comfort in working on their knees without the need to adjust.

McAlpine kneepads powered with Redbacks® Technology have been uniquely designed to reduce the incidence of injury to the users knees they will not reduce the risk of injury completely.

