



Lighting **excellence**

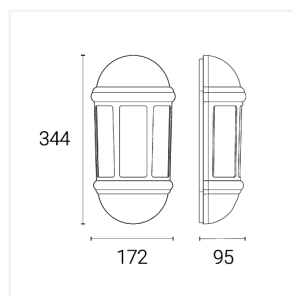
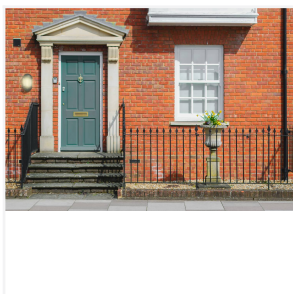


IP65 E27 Half Lantern

IP65 E27 Half Lantern

Code: 4L2/3410

Application Commercial, Garden



Product Features

- Contemporary IP65 polycarbonate lantern, resistant to corrosion suitable for commercial and residential applications (supplied without bulb)
- Suitable for E27 Bulb
- Textured polycarbonate finish and tinted lens
- Ideal for gardens and entrances

Technical Information

Input	220/240V
Operating Temp	-10°C - 40°C
Product Weight without Packaging	0.653 kg

Technical Information

Light Source	E27
Colour / Finish	Graphite
IP Rating	IP65
Class Protection	2
Internal / External	External
Mounting Option	Wall
Warranty (Years)	4
CE Mark	Yes
Height	344 mm