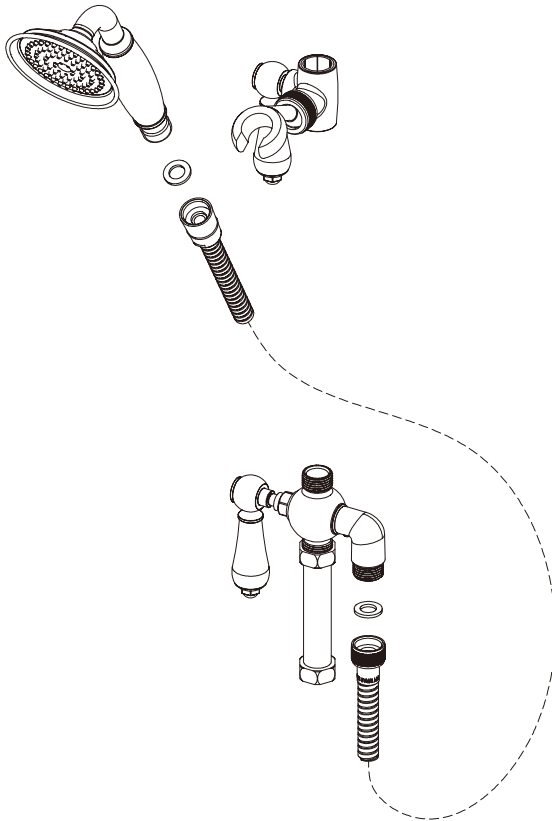


Diverter and handset Kit

(Designed to be used with Mixer Shower)

Fitting instructions

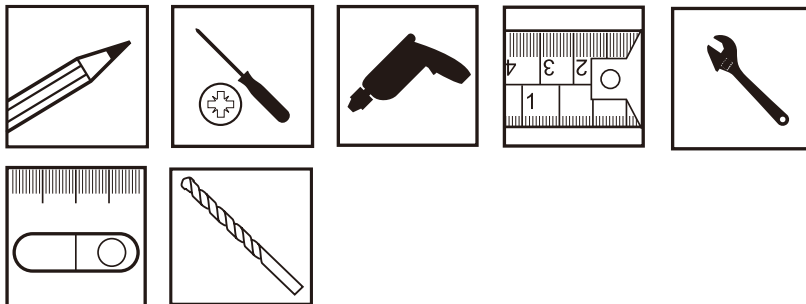


**Please note: Tap head shown is for illustration purposes only.
Please keep these instructions for future reference and request of replacement parts.**

We have taken great care to ensure that this product reaches you in perfect condition. However should any parts be damaged or missing please contact your point of purchase. This does not affect your statutory rights. In addition if you require replacement parts your point of purchase will be happy to assist.

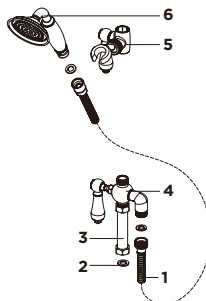
Contents	Page
1. Tools Required	2
2. Before Your Start	3
3. Installation	3-4
4. Aftercare	4

Tools Required (Tools not supplied)



Parts Supplied

NO.	Description	Qty
1	Shower hose	1
2	Sealing washer	1
3	Connect tube	1
4	Diverter	1
5	Slider	1
6	Handset	1



Before Your Start

Hot water should be stored and distributed at a temperature of not less than 60°C which will help minimise the build-up of limescale.

For further details contact your Local Water Authority.

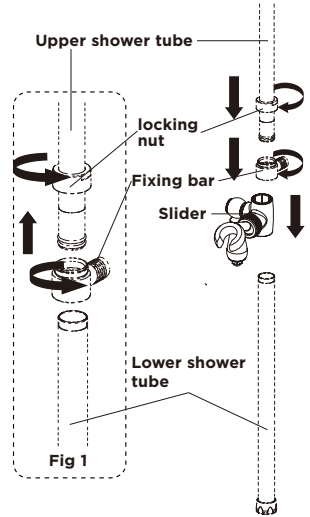
This shower kit should be installed in compliance with the UK Water Supply (Water Fittings) Regulations.

- (a) Identify all components and check pack contents.
- (b) Turn off water mains supply.

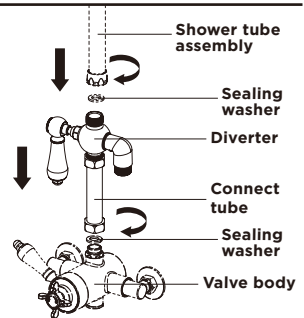
Installation

Install shower valve in desired location.

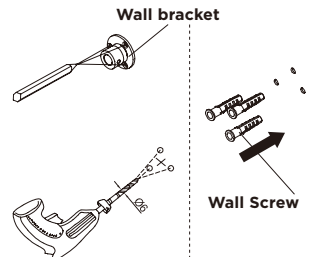
- 1. When fitting the lower shower tube into the slider the fixing bar and locking nut on the lower shower will need to be removed first. See Fig 1.
 - 2. Ensuring the lower shower tube fit into the slider when fixing bar has been removed.
 - 3. Screw the fixing bar to lower shower tube, insert upper shower tube with locking nut to fixing bar and screw locking nut of the upper shower tube to fixing bar.
- Do not tighten.



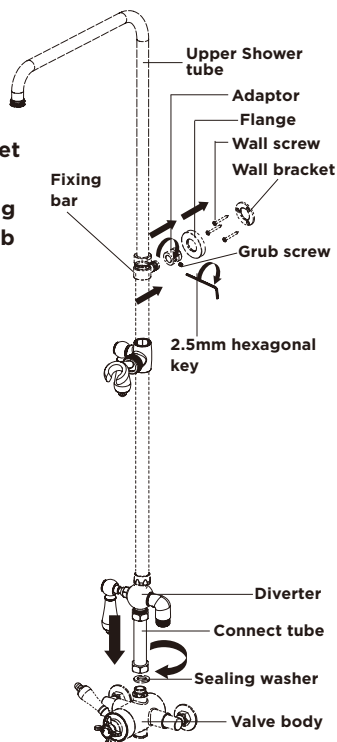
- 4. Fit connect tube with sealing washer to shower valve and diverter.
- 5. Fit this shower tube assembly with sealing washer to the diverter. Do not tighten.



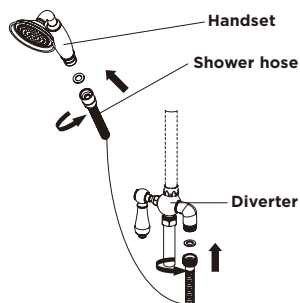
- 6. Hold this assembly to the wall, ensure that the shower tube is vertical and mark screw holes through wall bracket.
- 7. Remove this assembly from shower valve, take care not to damage the product surfaces.
- 8. Drill the holes and insert the wall plugs.



9. Fit wall bracket to the wall using wall screws and tighten.
10. Screw adaptor to the wall bracket and tighten.
11. Push flange onto the adaptor.
12. Re-fit this assembly with sealing washer to the outlet of the valve body, insert fixing bar into the adaptor at the same time. Screw grub screw to adaptor using an 2.5mm hexagonal key, don't over tighten for grub screw before finish install.
13. Tighten all fixing nuts and grub screw.



14. Insert hose seal to cone end provided in pack and connect to handset and tighten. Insert second seal into opposite end of hose and connect to right side outlet of the diverter. **DO NOT OVERTIGHTEN.**
15. Place handset to the handset holder.
16. Turn on the water supply. Letting the water flow, to check all joints and connections for leaks.



Aftercare

Whilst modern plating techniques are used in the manufacture of these fittings, the plating will wear if not cleaned properly. The safest way to clean your product is to wipe with a soft damp cloth. Stains can be removed using washing up liquid. All cleaning powders and liquids will damage the surface of your fitting even the non-scratch cleaners.