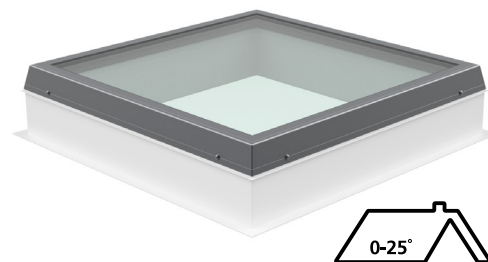


Flat Glass Rooflight

With its anthracite grey frame and double glazed finish, the Keylite Flat Glass Rooflight provides a contemporary alternative to Polycarbonate flat roof products.

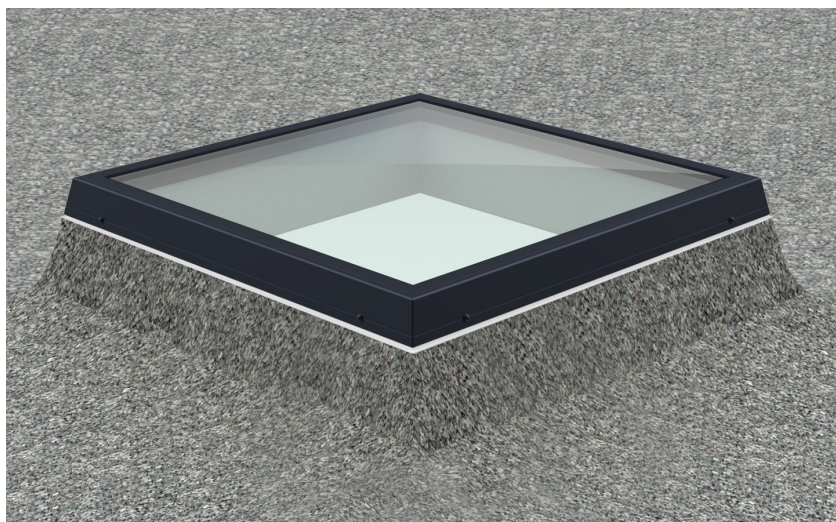


*See note for below 5°

Features

- ▶ **Thermal Performance** - All Keylite Flat Glass Rooflights are supplied with an insulated PVC upstand for increased thermal efficiency and a reduction in heat loss. They boast an impressive 1.26 W/m².K U-Value for the overall unit.
- ▶ **Warm Edge Glazing** - Every Keylite Flat Glass Rooflight has a warm edge glazing unit incorporated into it as standard, to enhance the windows performance and reduce the occurrence of condensation.
- ▶ **Additional Safety** - The glazing unit of all Keylite Flat Glass Rooflights comprises of a 6mm Toughened outer pane, 16mm Argon gas filled cavity and an 8.8mm laminated inner pane. The lamination between the two inner panes means that were an object to make contact with the glass, if the force is sufficient enough to shatter the glass the lamination ensures the glazing unit remains intact and does not fall causing potential harm to the occupants below.
- ▶ **Increased Security** - The unique patented security screw-bolts that mechanically fix the glazed top to the PVC upstand provide the occupiers with increased peace of mind that the unit cannot be breached through simply removing the glazed top.
- ▶ **Operation** - Keylite Flat Glass Rooflights are supplied fixed shut as standard; however additional upgrades to manual and electric operation are also readily available.
- ▶ **Installation** - All Keylite Flat Glass Rooflights are intended to be installed on roof pitches between 5° - 25°.

****This product can be installed on roof pitches below 5° when mounted to an additional upstand at 5°. Were the unit is to be installed below 5° then there is an increased risk of water and dirt lying on the glass where over time there is a chance this could lead to some minor discoloration of the glass.***



Application

- ▶ Keylite recommend installing the Flat Glass Rooflights on a 5° incline as this will allow any surface water to run off the glass effectively to ensure the unit remains watertight. Where the roof pitch is below that, an additional up stand at 5° is required.
- ▶ For installation of units above 2.2m Keylite also recommend electrical operation.

Maintenance

- ▶ The glazing pane of a Keylite Flat Glass Rooflights can be cleaned with a soft, clean cloth/chamois or non-metal squeegee. Clean water will be sufficient for cleaning the pane.
- ▶ The PVC upstand is manufactured from shock resistant PVC and similar to the Glazing Pane, can be cleaned with non-abrasive clothes and clean water. Where stronger cleaning compounds are required in order to remove more stubborn stains please consult the Keylite Technical Department.

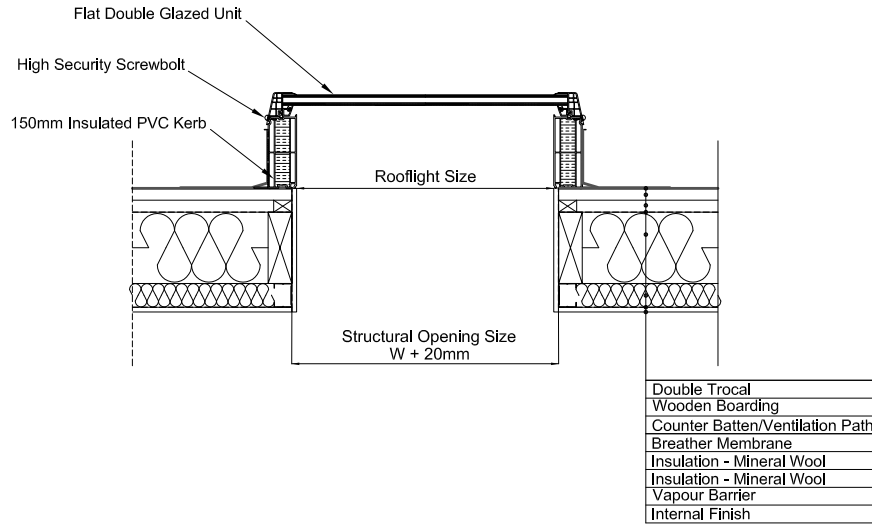
Guarantee

- ▶ **10 Years** – Keylite's hassle free guarantee on Flat Glass Rooflights.
- ▶ **3 Years** – Keylite's hassle free guarantee on, electrics and accessories.

Finish Options

- ▶ **Interior** – White PVC
- ▶ **Exterior** – Grey

Technical Information



Technical Data

Characteristic	Values
Thermal transmittance of rooflight - Rooflight with glazing insulating laminated glass	$U_g = 1.1, U_w = 1.26 \text{ W/m}^2 \cdot \text{K}$
Thermal transmittance of upstand - Splayed PVC upstand with PUR insulation - Vertical PVC upstand with PUR insulation	$U_p = 0.88 \text{ W/m}^2 \cdot \text{K}$ $U_p = 0.92 \text{ W/m}^2 \cdot \text{K}$
Accoustic performance	$R_w = 31 (-1; -1) \text{ dB}$
Air permeability	Class 2
Watertightness	Pass (without penetration of water)
Up-effect loading	UL 3000
Down-effect loading	DL 2500
Impact resistance	CWCT Class 1
Fire rating	Class B-s2, d0
Light transmittance	76%
Glazing	Double glazed 6mm toughened outer 8.8mm laminated inner pane

Size Range

Size Code	Description	S6	R69	S8	S9	R912	S10	R1015	S12
Size WxH (mm)		600x600	600x900	800x800	900x900	900x1200	1000x1000	1000x1500	1200x1200
Structural Opening Size		600x600	600x900	800x800	900x900	900x1200	1000x1000	1000x1500	1200x1200

UK

Unit 3 Gateway Road, Burton Gateway,
Burton upon Trent, DE13 8FL

T: +44 (0) 1283 200 158
E: info@keyliteuk.com

NI & ROI

Derryloran Industrial Est. Sandholes Road,
Cookstown, Co. Tyrone, BT80 9LU

T: +44 (0) 28 8675 8921
E: info@keylite.co.uk