

A-Slate for slate roofs

A-Slate

Article No. F-Aslate-1#

Product properties

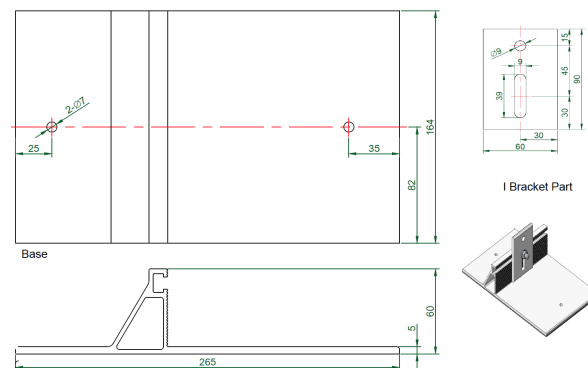
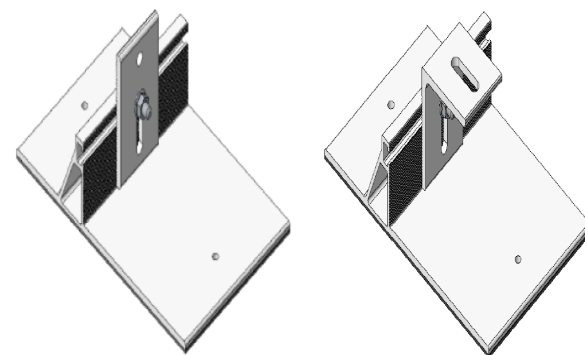
Material	AL6005-T5 and SUS304
Dimensions	264*164 mm
Weight	1.01 kg
Colour	Mill or Black
Pre-assembled	Yes

Application properties

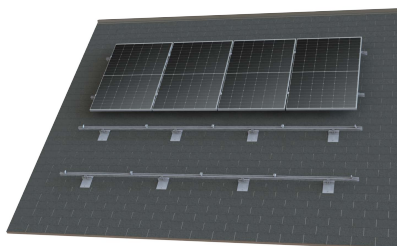
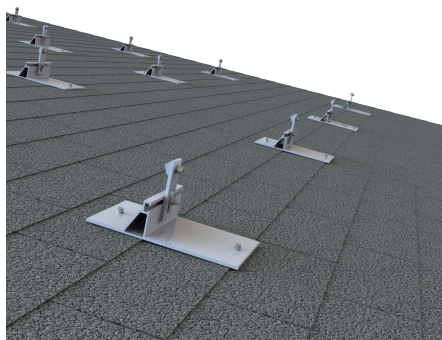
Function	Fixed on pitched slate tile roofs and flat roofs
Max. fastening torque	14.5 Nm
Clamping range	Slate Tile Roofs
Type of modules	Framed Modules
Drive	Hexagon Socket M8
Can be used with Rail system	GS> Rail

Package

Package Detail	10 pcs/ctn
----------------	------------



Installation



Dealer information

