

# ATLANTIC 10



**NEW!**  
**INSTALLATION SYSTEM**  
**1 clic 2go pure+**

\*24h surface water protection as stipulated by NALFA and 48h splash-water protection according to works standard KRONOSPAN WN-103, www.floor-with-more.com.  
 Protection de 24 h de la surface contre l'eau aux termes de la NALFA et protection de 48 h de la surface contre des éclaboussures, d'après la norme d'ouvrage standard KRONOSPAN WN-103, www.floor-with-more.com

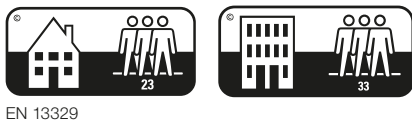


1288 x 195 x 10 mm

- AC5 Abrasion class
- 30 Residential guarantee
- V4 Real groove
- Anti bacterial comfort
- Microscratch protect
- Light-resistant
- Authentic embossed
- Pet-proof
- 1 clic 2go pure+



The laminate floor that can simply do more

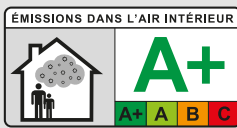


30 year residential warranty\*<sup>1</sup> · Four sided V-groove · A.B.C. Antibacterial surface\*<sup>2</sup> · Microscratch resistant · Light-resistant and colorfast\*<sup>3</sup> · Authentic embossed structure gives a natural look and feel · Pet proof · 1 clic 2go pure+: Clickable short and long edges · For domestic use with heavy utilisation · For commercial use with heavy utilisation

\*<sup>1</sup> The guarantee is valid for domestic use according to the conditions of guarantee. · Die Garantie gilt für den Wohnbereich gemäß Garantiebestimmungen. · La garantie est valable pour l'habitation conformément aux conditions de garantie. · La garantía es válida para uso doméstico de acuerdo a las condiciones de la garantía. Garanția este valabilă pentru spații rezidențiale conform condițiilor de garanție. Detailed terms of guarantee · Ausführliche Garantiebedingungen · Conditions de garantie détaillées · Condiciones de garantía detalladas · Condiții detaliate de garanție: www.krono-original.com \*<sup>2</sup> Tested germs · Getestete Bakterien · Germes testés · Bacterias analizadas · Bacterii testate: Staphylococcus aureus \*<sup>3</sup> According to Level 6 of the Blue Wool Scale · Gemäß Stufe 6 der Blauwollskala · Conformément au niveau 6 sur l'échelle des bleus · Conforme al nivel 6 de la escala de azules · Conform nivelului 6 al scalei lânii albastre



**WARNING:** Drilling, sawing, sanding or machining wood products can expose you to wood dust, a substance known to the State of California to cause cancer. Avoid inhaling wood dust or use a dust mask or other safeguards for personal protection. For more information go to [www.P65Warnings.ca.gov/wood](http://www.P65Warnings.ca.gov/wood).

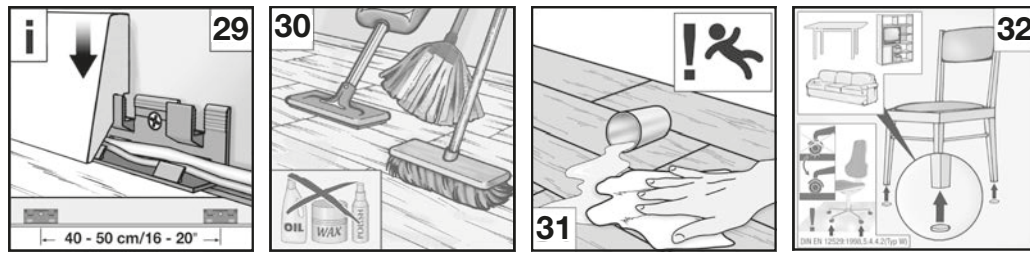
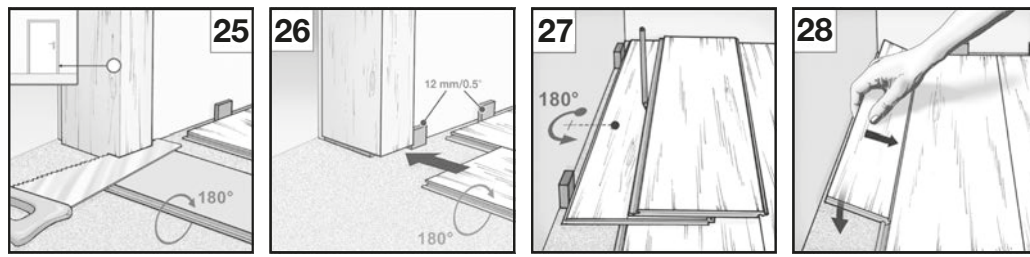
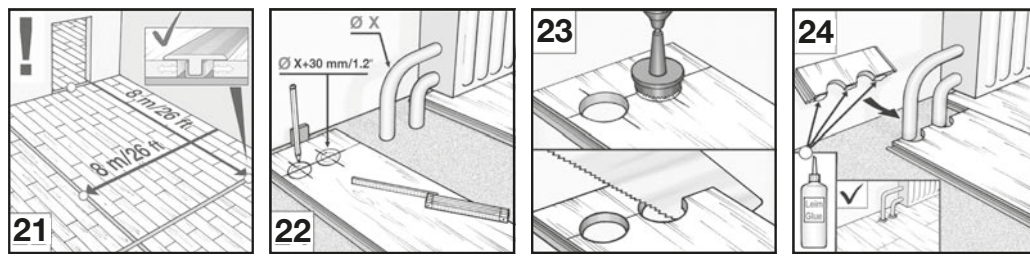
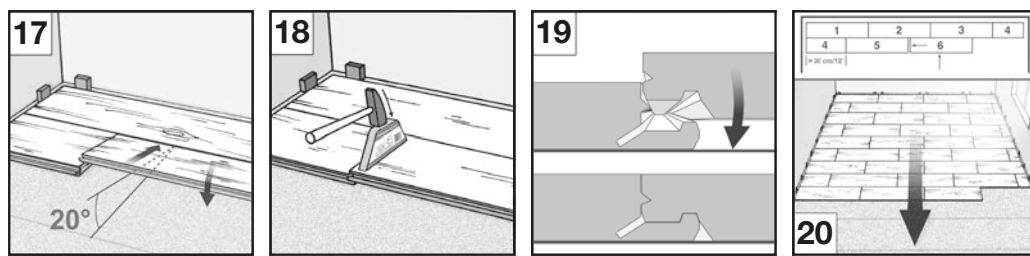
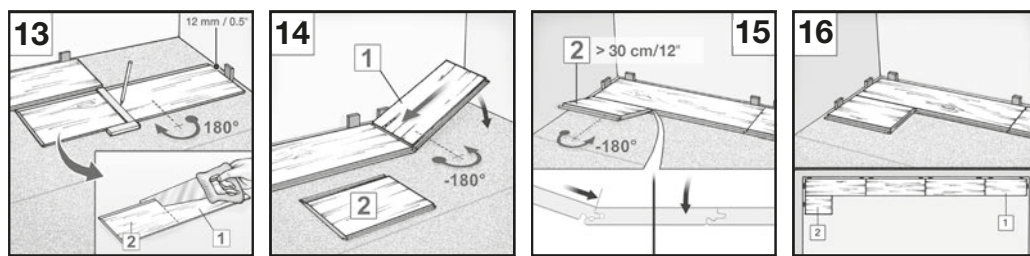
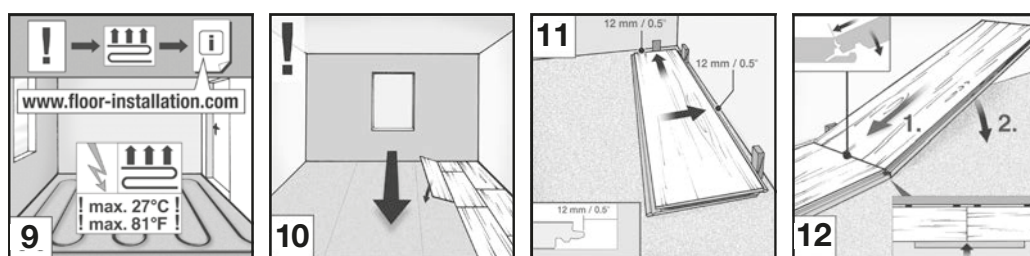
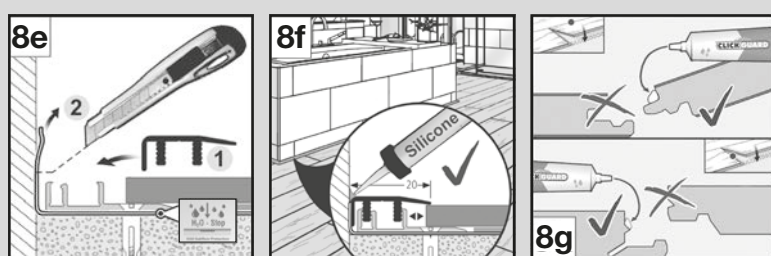
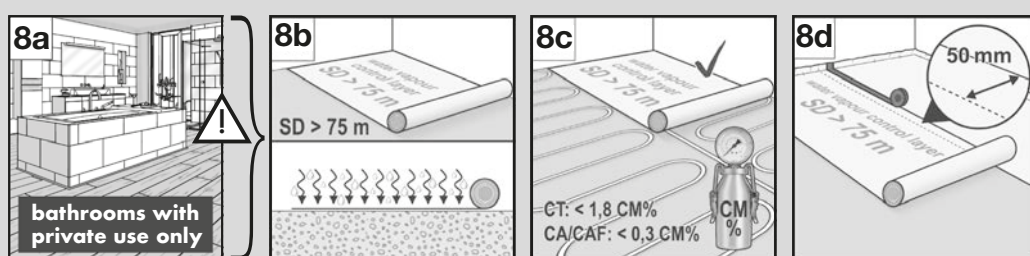
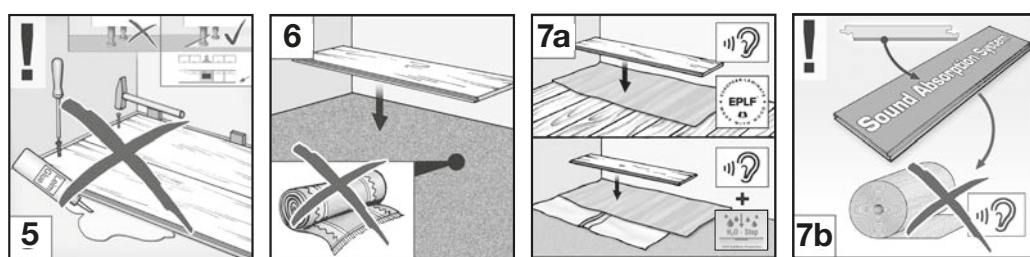
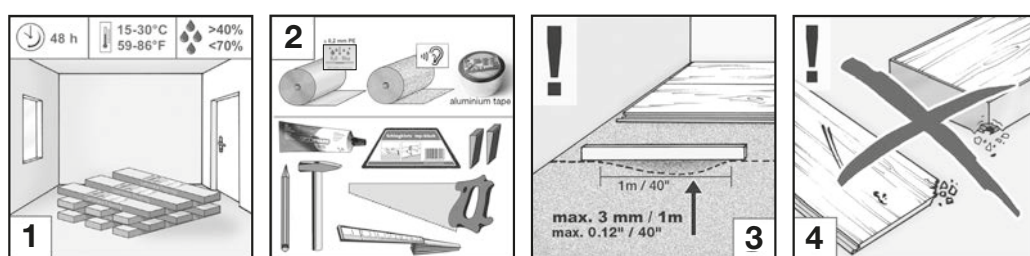


Information sur le niveau d'émission de substances volatiles dans l'air intérieur, présentant un risque de toxicité par inhalation, sur une échelle de classe allant de A+ (très faibles émissions) à C (fortes émissions). Statement on level of emission of volatile substances in indoor air posing a toxic threat during inhaling – on a scale from A+ (very low-emission) to C (high-emission). Angabe über den Grad der Emission von flüchtigen Substanzen in der Raumluft, die ein toxisches Risiko beim Einatmen darstellen, auf einer Skala A+ (sehr emissionsarm) bis C (hohe Emissionen).  
[www.eco-institut.de/e/portfolio/emissions-dans-lair-interieur](http://www.eco-institut.de/e/portfolio/emissions-dans-lair-interieur)

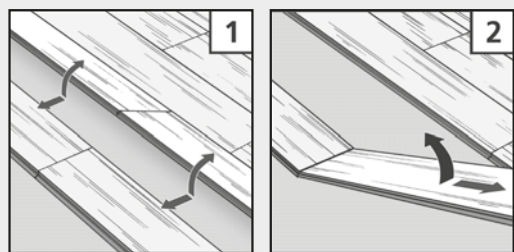




**eng** Before installing the floor, please also refer to the online installation instructions: [www.floor-installation.com](http://www.floor-installation.com)  
**NOTE!** Please check all panels for defects before installation. Any panels with visual defects (visible from a height of 1.5 m / 5 ft) should not be installed.  
**deu** Vor dem Verlegen bitte auch die Online Verlegeanleitung beachten unter: [www.floor-installation.com](http://www.floor-installation.com)  
**HINWEIS!** Bitte Paneele vor dem Verlegen kontrollieren. Bei evtl. Oberflächenfehlern (müssen erkennbar sein aus einer Abstandshöhe von 1,5 m) die betroffenen Paneele aussortieren!  
**fra** Avant la pose, consultez les instructions de pose en ligne : [www.floor-installation.com](http://www.floor-installation.com)  
**ATTENTION!** Vérifiez les lames avant la pose. Unelame présentant un défaut visible (d'une hauteur de 1,5 m) ne doit pas être installée.  
**spa** Antes de colocar el producto, tenga en cuenta las instrucciones de colocación online disponibles en: [www.floor-installation.com](http://www.floor-installation.com)  
**NOTA!** Inspeccione los paneles antes de colocarlos. En caso de que existan fallos en la superficie (deberán poder reconocerse desde una altura de 1,5 m), excluir los paneles afectados.  
**ron** Înainte de a instala podeaua, consultați și instrucțiunile de instalare online: [www.floor-installation.com](http://www.floor-installation.com)  
**NOTĂ!** Verificați defectele tuturor placilor înainte de instalare. Nu trebuie instalate placile cu defecte vizuale (vizibile de la o înălțime de 1,5 m).



**Disassembly/Deinstalation/Le désassemblage/Desinstalación/Dezasablarea:**



Disposal has to be made via residual waste. Die Entsorgung hat über den Restmüll zu erfolgen. Le produit doit être mis au rebut avec les déchets non recyclables. La eliminación de este producto deberá realizarse a través de desecho inorgánico. Eliminarea trebuie făcută prin deșeuri reziduale.