

super natural

AC4, Class 32, 8 mm $\sqrt{4}$

NEW!

INSTALLATION SYSTEM

1 clic 2go pure+



Krono Original
High Quality
Made by Kronospan

everyone's favourite flooring

Guarantee
20
Years

Thickness 8mm
Size 1288 x 195mm
Panels 9 per pack
Coverage 2.26m²



Four sided V-groove



Moisture protection



For domestic use with heavy utilisation

EN 13329



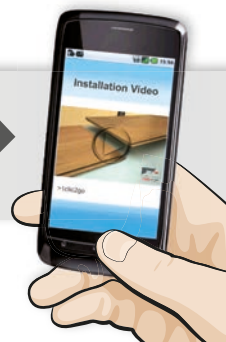
For commercial use with general utilisation



Clickable short and long edges

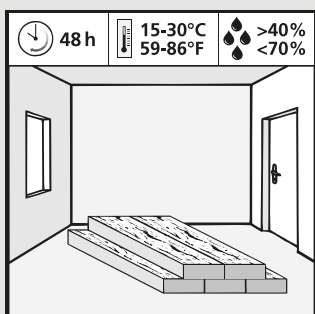


www.krono-original.com



*The guarantee is valid for domestic use according to the conditions of guarantee.

Please ensure you read full instructions overleaf!



Authorised Representative: Kronospan Luxembourg S.A.Z.I. Gadderscheier, 4902 Sanem, Luxembourg e-mail: ar@kronospan.lu



Super Natural

IMPORTANT INFORMATION

It is imperative that the fitting instructions are carefully read before commencing installation. Check each and every panel for obvious defects prior to installation! Claims cannot be accepted for obvious panel defects which are easily noticeable before fitting.

ANY SINGLE UNIT OF FURNITURE PLACED ON A FITTED LAMINATE FLOOR SHOULD NOT EXCEED 115kg IN WEIGHT.

Guarantee

By us, the manufacturer and any person to whom its rights and/or duties under this guarantee are transferred and any successor to its business. To you, the original purchaser and any person to whom the original purchaser's rights under this Guarantee are transferred; For the product **SUPER NATURAL**.

What this Guarantee covers

- We guarantee that the top surface of **SUPER NATURAL** will not wear through, or stain for a period of 20 (twenty) years beginning with the date of purchase by the original purchaser, subject to the terms of this Guarantee.
- This Guarantee does not apply where:
 - the product is supplied to the original purchaser other than in its original packaging;
 - the product is altered or modified other than in accordance with reasonable instructions supplied with the product; for example, as to cutting and gluing;
 - the damage results from any installation, use, cleaning, maintaining or repairing of the product other than in accordance with:
 - specifications supplied in sales literature for the product; or
 - reasonable instructions supplied with the product;
 - the damage results from any intentional, reckless or negligent act or omission of any person other than ourselves or our employees or our agents, or from any act of God, or from any act of any animal;
 - the damage area is the edge of any panel of the product;
 - the damaged area measures less than one square centimetre; or
 - the product is supplied or installed outside the United Kingdom
- You must make any claim under this Guarantee as soon as possible after you notice the damage. This is because delay may make your claim harder to prove. Your claim must be received within 20 (twenty) years beginning with the date of purchase by the original purchaser.
- You must make the claim:
 - by contacting the outlet you purchased from.
 - You must provide reasonable evidence of: the date of purchase by the original purchaser; for example, a copy of the invoice.
- If we ask, you must provide reasonable access and

facilities at the property to ourselves, our employees and our agents for the purposes of assessing the claim and carrying out any work under term 8 below, unless you have reasonable justification to refuse this.

Our liability under this Guarantee

- To the extent that your claim is valid, we will at your option:
 - repair the damaged panels;
 - replace the damaged panels;
 - refund the original purchase price of the damaged panels;
- if the product is not in our current standard range:
 - replace all panels of the product installed or to be installed in the same room as the damaged panels with panels of an equivalent product in our current range; or
 - refund the original purchase price of all panels of the product installed or to be installed in the same room as the damaged panels.

8. To the extent that your claim is valid:

- we will reimburse your reasonable expenses of returning damaged panels, and will deliver replacement panels; and
 - we will de-install panels and install replacement panels at our expense, except to the extent that the damaged area was reasonably visible before it was installed.
9. We will not be liable under this Guarantee for business loss; for example, loss of contracts, loss of profits, loss of revenue or loss of anticipated savings in expenditure.

Law

- This guarantee is in addition to your statutory rights against any person or relating to any matter; for example, your statutory rights relating to the description, quantity, quality or fitness of the product.
- The law of the relevant part of the United Kingdom applies to this Guarantee. Any court proceedings in connection with this Guarantee must be taken in the United Kingdom.

Installation Instructions

IMPORTANT INFORMATION

Please read through the complete laying instructions first! Precisely follow these instructions, in order to retain full warranty and guarantee claims. Please check the panels in good lighting conditions for defects. Once you have used the panels you can no longer make any claims due to defects. **Please note that this laminate flooring is not suitable for wet rooms, e.g. bathrooms and saunas.**

Notes before laying

An important prerequisite for the installation and long preservation of the laminate is a relative air humidity of 40-70%.

- The sub-floor must be absolutely level, dry, clean and firm.
- When laying on mineral surfaces, e.g. concrete, cement screed, anhydrite screed and stone tiles, etc., extra care must be taken.
- Please allow 1 week drying time per cm depth to allow to completely dry out. Fit a Damp Proof Membrane (DPM) between mineral subfloor and underlay/laminate flooring.
- Lamination flooring is installed under "floating" conditions and may not be glued, screwed, nailed, or in any other fashion fixed to the floor!

The placement of very heavy objects, such as fitted kitchens and cupboards behind laying and to lay laminate floor only up to behind the plinth panel. In the event of failure to comply with these requirements any claims for damages shall be excluded.

- We recommend you sort the panels before laying according to the required grain direction and any colour nuances.
- Use the contents of opened packages immediately!

You will need the following to lay the flooring: Impact sound insulation, PE foil, spacing wedges, chock, fitting aid, saw, pencil and folding rule. If required, laminate floor joint sealant, White (PVA) glue D3, jointing compound. Depending on the area of use, there are three laying possibilities open to you:

- Fast, glue-free laying.
- Laying with Laminate flooring joint sealant. Laminate flooring sealant protects the floor from moisture effects acting from above. Laminate flooring sealant does not glue panels down or together.

Preparation

- Store unopened packs in the room to be laid for 48hrs to acclimatise.
- Prepare all tools and underlay.
- Any unevenness in the sub-floor of more than 2mm over 1m must be evened out.
- Check for visual damage to the panels, as once laid no claims can be made.
- The floor must be installed floating, do not glue, nail or screw the floor down.
- Do not lay on carpet, remove before fitting.
- Laminate is not suitable for humid or wet areas.
- If laying over a stone/mineral sub floor, lay a Damp Proof Membrane (DPM), and for enhanced noise reduction use a special absorption product or underlay. Only use foam underlay specified for laminate flooring minimum 1mm, maximum 3mm (CS60kPa) or a High Density Fibreboard.
- Under floor heating can be used, to a maximum of 27°C.

Laying

- Installation with Clickguard™: for the installation of laminate flooring in commercially-utilized rooms, a sealing procedure must be carried out [10]. Clickguard™ protects the flooring from the top down for the long-term against the effects of moisture. The floor lamination can be removed later and newly installed. When using Clickguard™, please follow the installation instructions. In the event that a sealant is to be used, sufficient quantities of Clickguard™ are to be applied to the tongue-spring side [10] (1 layer lengthwise and 1 layer for the width). The excess Clickguard™ should be scraped off from the surface with a plastic spatula after max.15 – 20 minutes.

Eventual remnants (residue) can be removed with household solvent cleanser.

- For best results lay floor in the direction of the light source.
- Begin your installation in the left corner of the room, with the tongue against the wall using spacers to maintain a 10-12mm expansion gap.
- Lay the second panel with the facing edge (short edge) at an angle of 30° into the groove of the previously placed panel. Make sure that the longitudinal edges are aligned. Ensure that they are not offset and form a straight line.
- For ease of measuring rotate the last panel 180°. (Keep expansion gap) Mark and cut.
- Rotate the cut piece and lay as above (11-12)
- Begin the next row using the off-cut from the end of the previous row. (Length >30cm/12")
- Insert the panel section lengthwise in the groove profiling of the first row and lock into place. The transverse joint must be offset by at least 30cm/12" from a row.
- Place a second panel lengthwise in the groove profiling of the panel area and push it into the left at an angle of 20° to the panels already in place. Push this panel downwards until an audible click is heard.
- In doing so, ensure that the panel is inserted and guided cleanly through the longitudinal profile. If the joint does not sit correctly, lightly tap with a tapping block and hammer.
- Continue this process to lay the entire room.
- If the floor exceeds 8m x 8m expansion breaks in the floor are required - use relevant profiles.

Tips & Tricks

- When cutting around heating pipes, place the panel in line both in front and along side to ascertain accurate marks. Include an additional 20mm on top of the pipe diameter for expansion.
- Use a hole saw for accurate cutting then cut the panel across the short edge through the centre of the hole.
- Fit the large piece as normal, and then insert the smaller piece gluing contact areas to hold in place. If space is at a premium, and you are unable to fold down, trim the profile flush using a wood chisel and glue in place.
- To fit floor neatly around door frames and architraves, turn over a panel, offer up to the frame to use as a thickness guide. Using a handsaw flush with the underside of the panel, cut the frame/architrave, and, remove the cut piece.
- Slide the panel under the frame, not forgetting to leave room for expansion.
- When measuring the width for the final row, rotate the panel 180° so the tongue faces the wall, not forgetting space for expansion gaps. Once the panel is cut, lay as normal. The space left for expansion will also allow space to fold the panels down.

Care & Cleaning

- Use a soft brush or vacuum cleaner to remove any surface dust. Do not use abrasive cleaners, steel wool or scouring pads, as they will damage your floor.
- For regular cleaning use a cloth, ensuring it is well wrung, it is important not to apply excess moisture to the floor. We do not recommend steam cleaning this product or using any polishes or chemicals that may damage the laminate surface.
- We recommend protecting your floor – use felt pads under furniture. Moveable furniture/chairs should be on soft castors or placed on a plastic mat. Furthermore, any single piece of furniture placed on the floor should not exceed 115kg in weight. Doormats should be used inside and outside of all external doorways to prevent grit from being carried across the floor, protecting the surfaces from excessive wear and tear.

Maintenance

SUPER NATURAL is virtually maintenance free. All it needs to restore its lustre after most spills is a wipe with a damp cloth. For really tough stains, we recommend using a little acetone. Avoid using excess water as it will damage your flooring and always clean up spillages immediately. To keep your laminated floor in good condition, be sure to:

- Use the floor exclusively under the recommended conditions.
- Put down a mat or rug to eliminate the risk of marks (gravel, soil, etc.) inside doorways and around sinks, etc, to protect from spillages.
- Move furniture carefully to avoid damaging the laminated surface.
- Felt pads are recommended under chairs and heavy furniture.
- Swivel chairs should have castors of a soft-rubber type construction, or place plastic mat under chair.
- Please be aware that this product is not to be cleaned with a steam cleaner. This will render the guarantee invalid.

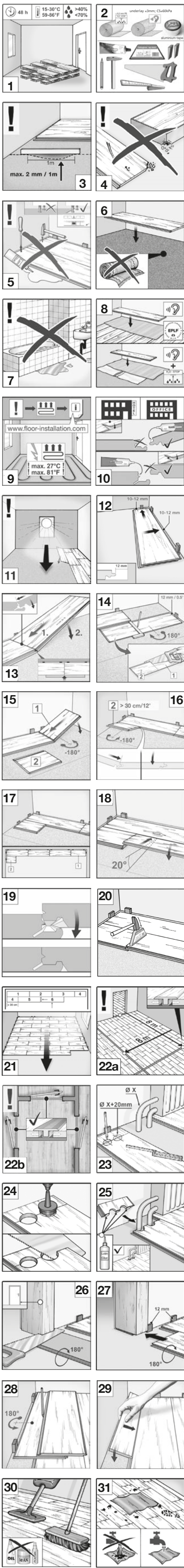
Stain Guide

TYPE OF STAIN	TREATMENT
Fruit, Berries, Juice, Milk, Cream, Soft Drink, Beer, Wine, Tea, Coffee, Urine	Mild cleaning agent
Rubber, Tar, Ink, Asphalt, Lipstick	White spirit or acetone (wipe with a damp cloth)
Chocolate, Shoe Polish, Oil, Grease	Methylated spirits (wipe with a damp cloth)
Blood	Cold Water

Important Note

Laminate flooring is hygroscopic, meaning that it is susceptible to reaction to moisture levels in the atmosphere. It is necessary therefore to ensure that flooring is installed in a stable environment. We recommend the boards are stored and laid in a relative humidity of between 50%-70% and a room temperature of between 18°C and 20°C.

Very dark/black decors are prone to show tiny scuffs and scratches - this is in line with expectation / normal day to day wear & tear. Abrasion resistance - a claim under the guarantee for abrasion defects is justified if an area of at least approx. 12.5mm (half inch) square of the colour has completely rubbed off. However, rub-off defects restricted to the edges of the panels are not covered by the guarantee. This floor is fade resistant - Light fastness Level 6 according to the Blue Wool Scale. Test method according to EN 20105, with the exception of natural ageing.



Disassembly

