

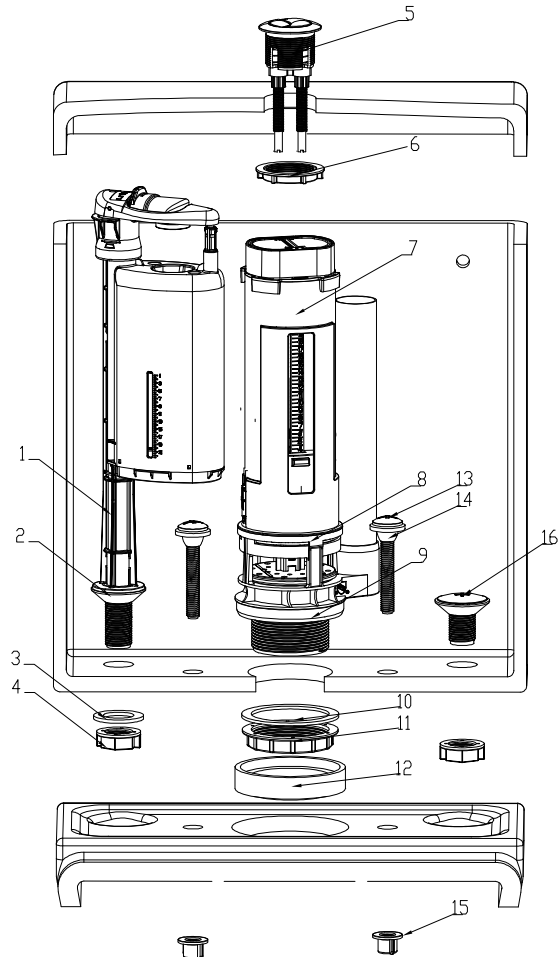
Attaching Cistern to WC

PLEASE READ THESE INSTRUCTIONS PRIOR TO INSTAATION.

These instructions must be carried out in order.

- 1) Use this checklist to ensure all parts are accounted for and not damaged .Under no circumstances should this product be installed if any of the parts are damaged or missing. If there are any installation issues please contact your local branch.
- 2) Ensure the gasket (12) is a tight fit on the flush valve thread. Place cistern onto the WC so that the bolts go through the two small holes as illustrated and fit the locking nuts (15) to secure in place taking care not to over tighten.

Item	Description	Qty
1	Fill valve	1
2	Fill valve triangle gasket	2
3	Fill valve plastic washer	1
4	Fill valve locknut	2
5	Push button	1
6	Push button nut	1
7	Flush valve	1
8	Flush valve base	1
9	Flush valve rubber seal	1
10	Flush valve plastic washer	1
11	Flush valve locknut	1
12	Rubber gasket	1
13	Connecting bolt	2
14	Connecting bolt seal	2
15	Connecting locking nut	2
16	Plug	1



UNIT: mm

INSTRUCTION

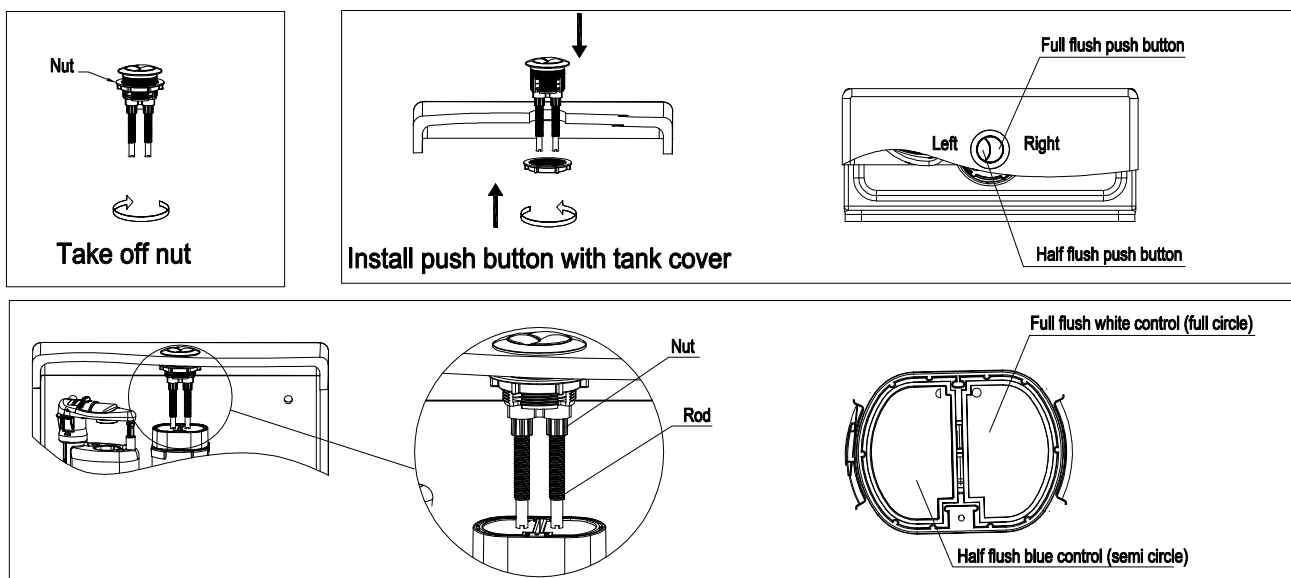
1. Please read carefully the following instruction. In order to avoid injuring body or damaging equipment, please install the equipment following the instruction step by step.
2. The instructions are compiled according to the up-to-date production information. we reserve the rights to make the changes about specifications, packaging and sullyng without prior notice.
3. When valve installed, the point of discharge to the overflow pipe must be greater than 34mm. The water level to the overflow pipe must be greater than 25mm.
4. We shall not be responsible for any failure of using any parts from other companies.
5. Water temperature: 2°C-45°C
6. Water pressure: 0.02Mpa-1Mpa.

Warning

DO NOT USE OR DROP ANY CHLORINE OR ANY CHEMICAL RELATED COMPONENTS. USE OF SUCH PRODUCTS WILL (1) RESULT IN DAMAGE TO CISTERN COMPONENTS AND MAY CAUSE FLOODING AND PROPERTY DAMAGE AND (2) VOID WARRANTY. DO NOT OVERTIGHTEN OR CISTERN/BOWL MAY CRACK.

Notice: If the products is different from the photo shown, please refer to the actual product.

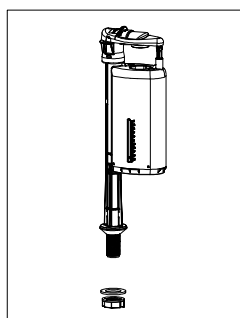
Push-button Installation



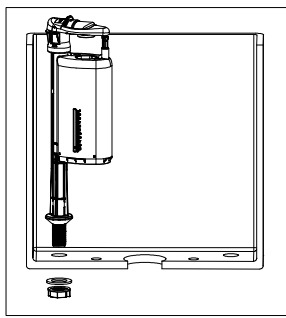
Adjust push button clockwise or anti-clockwise to ensure that the half flush rod is aligned with the blue flush valve control and the full flush rod is aligned with the white flush valve control.

loosen the fixing nut and rotate rod clockwise or anti-clockwise until the rod end makes contact with the push control then re-tighten the fixing nut (if required cut the upper ends of rods using pliers)

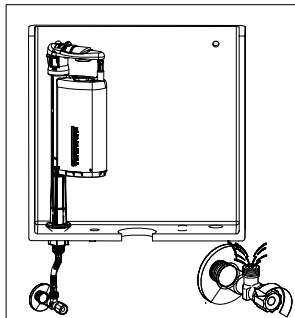
Inlet valve install



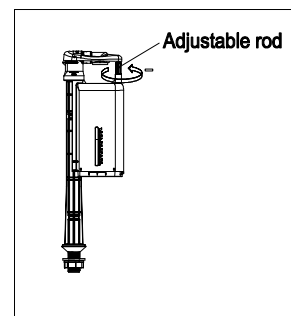
Unscrew the nut and remove the plastic washer.



Insert the fill valve into the installation hole at the bottom of the tank and then install the plastic washer and tighten hex nut.

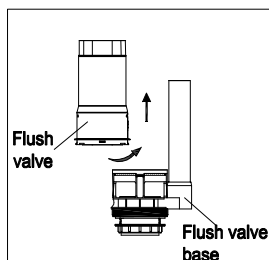


Install water supply line onto the shank of the fill valve and turn on water supply valve/angle stop

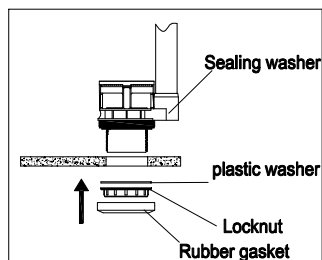


By rotating the blue adjustable rod, the water level increases when rotating clockwise and decreases when rotating counterclockwise

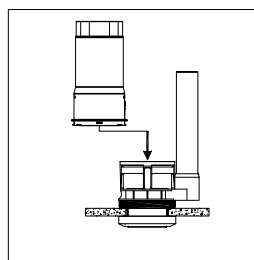
Flush Valve Installation



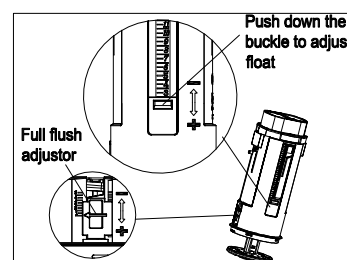
Circumrotate flush valve body and make it remove from the flush valve base



Let pedestal insert into outfall from inside of water tank, cover the plastic washer, then, circumrotate locknut and cover the Rubber gasket, and it can adjust the put angle properly according to the actual size of water tank.



Install flush valve body.



Float up, half flush volume decreases. Float down, half flush volume increases

Full adjustor up, full flush volume decreases. Full adjustor down, full flush volume increases.