

Dansand® NO GROW™

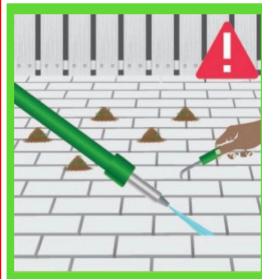
Environmentally friendly weed inhibiting joint filling sand

www.dansand.co.uk



IMPORTANT: Completely remove weeds with an environmentally approved weedkiller before applying Dansand NO GROW. Dansand will not eradicate existing weeds that have roots either in or underneath the joints. Dansand is not a weed killer, it is a weed inhibitor.

Transform your new or tired drive or patio in 3 steps:



1. Remove existing jointing material and clean to a minimum of 40mm. Dansand NO GROW Natural works in joints 1mm - 5mm, other Dansand varieties are available for wider joints. Remember the foundations need to be free draining.



2. Allow the paving and joints to dry before applying Dansand NO GROW. Please don't pour Dansand directly from the bag into the joints, remember to mix the contents before applying to enable all the minerals to evenly distribute (which may have settled during transit).



3. Sweep Dansand NO GROW into the joints and compress, before topping up with a further application. When all the joints are completely filled, clean the surface with a soft brush.

Maintenance: Keep the joints clean, periodically top-up if required due to water and wind erosion.