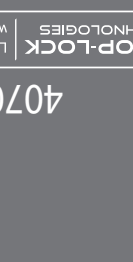




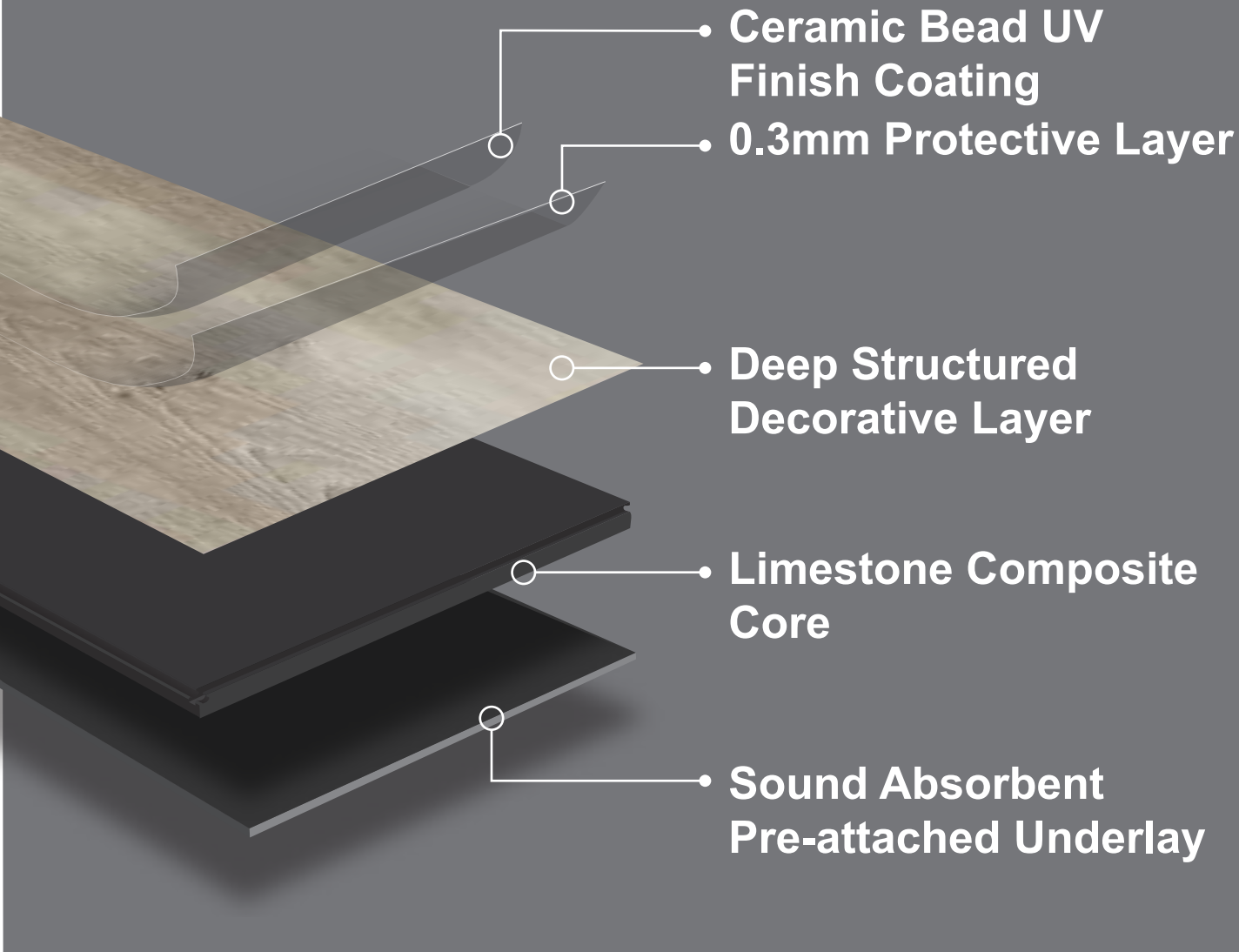
311189
Light Oak
40703062001



NOVOCORE®
The NEXT Revolution in Waterproof Floors
1235 x 192 x 3.5+1 mm
WL: 0.3 mm
13 pcs = 3.08 m²
23.25 kg/box
Made in China

NOVOCORE®

The **NEXT** Revolution in Waterproof Floors



Installation requirements*. Ensure that...

- Subfloor is firm
- Subfloor is flat / level (Deflections over 5 mm within 3 m and unevenness over 1 mm within 20 cm must be leveled.)
- Subfloor is clean and dry
- No additional underlay is used
- Expansion gaps are strictly followed (6-10mm to the wall)
- Flooring is not used in an office or wetroom

*Refer to installation instructions on the reverse for further details. Failure to follow instructions may invalidate the warranty.

Rigid Luxury Vinyl Flooring

With Sound Absorbent Pre-attached Underlay

SPC

100% Waterproof

Sound Absorbent Pre-attached Underlay

No Glue Required

Wear Layer

0.3mm

Easy To Install

Residential Guarantee

15 year

Suitable With Underfloor Heating

Dent And Scratch Resistant

Cut Bevel

Suitable For

Unsuitable For Castor Chairs

No Additional Underlay Required

Plank Size 1235x192x3.5+1mm **Pack Coverage** 3.08m²

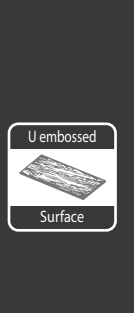


WARNING HEAVY
23.25kg

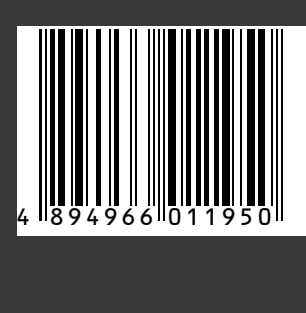
NOVOCORE®

The **NEXT** Revolution in Waterproof Floors

NOVOCORE®
The **NEXT** Revolution in Waterproof Floors
1235 x 192 x 3.5+1 mm
WL: 0.3 mm
13 pcs = 3.08 m²
23.25 kg/box
Made in China



311189
Light Oak
40703062001



Thank you for choosing our flooring. When properly installed and cared for, your new flooring will be easy to maintain and will keep its great look for years.

Please read all the instructions before you begin the installation. Improper installation will void warranty.

I. GENERAL PREPARATIONS

TOOLS REQUIRED: Spacers, rubber mallet, ruler, pencil, tape measure, utility knife.

- Prior to installation, inspect material in daylight for visible faults/damage, including defects or discrepancies in color or shine; check the edges of the flooring for straightness and any damage. No claims on surface defects will be accepted after installation.
- It is preferable to lay boards perpendicular to the window, following the direction of the main source of light. For the best result, make sure to always work from 3 to 4 cartons at a time, mixing the planks during the installation.
- Check if subfloor/site conditions comply with the specifications described in these instructions. If you are not satisfied, do not install, and contact your supplier.
- Flooring products can be damaged by rough handling before installation. Exercise care when handling and transporting these products. Store, transport and handle the flooring planks in a manner to prevent any damage. Store cartons flat, never on edge.
- Flooring products can be heavy and bulky. Always use proper lifting techniques when handling these products. Whenever possible, make use of material-handling equipment such as dollies or material carts. Never lift more than you can safely handle; get assistance.
- Calculate the room surface prior to installation and plan an extra 5-10% of flooring for cutting waste.
- The environment where the flooring is to be installed is critically important with regard to successful installation and continued performance of the flooring products. The flooring is intended to be installed in interior locations only. These interior locations must meet climatic and structural requirements as well.
- In most cases, this product does not need to be acclimated. However, if the boxes of flooring were exposed over 2 hours to extreme temperatures under 50°F / 10°C or over 104°F / 40°C within the 12 hours before the installation, acclimation is required. In this case, keep the boards in room temperature for at least 12 hours in unopened package before you start the installation. The room temperature must be maintained consistent between 70-80°F / 20-25°C before and during the installation.
- Flooring should only be installed in temperature-controlled environments. It is necessary to maintain a constant temperature of 70-80°F / 20-25°C before and during the installation. Portable heaters are not recommended as they may not heat the room and subfloor sufficiently. Kerosene heaters should never be used.
- After installation, make sure that the flooring is not be exposed to temperatures less than 50°F / 10°C or greater than 120°F / 50°C.
- For floor surfaces exceeding 4356 sq. ft. / 400 m² and/or lengths exceeding 66 lineal ft. / 20 m, use expansion moldings.
- This product is designed to be resistant to wear, however no product is guaranteed against scratches or loss of gloss. Please be sure to follow our maintenance instructions to ensure that your floor remains new as long as possible.
- A combination of heat and sunlight can cause most home furnishings to fade and discolor. Avoid exposure to direct sunlight for prolonged periods. During peak sunlight hours, the use of blinds or drapes is recommended.

II. SUBFLOOR INFORMATION

- Inspect your subfloor before you begin, it must be structurally sound, clean, dry, flat, and smooth. High spots and bumps must be leveled. Deflections more than 3/16" / 5 mm within 10 ft. / 3 m radius must be leveled out with an appropriate leveling compound, the same applies to unevenness of more than 1/32" / 1 mm within 8' / 20 cm.

- Ceramic tile floors, ceramic and marble grout joints, and irregularities in concrete should be filled and leveled.

- Depressions, deep grooves, expansion joints and other subfloor imperfections that exceed 4mm wide & 4mm depth must be filled with patching & leveling compound.

- Substrates must be free from excessive moisture or alkali. Remove dirt, paint, varnish, wax, oils, solvents, any foreign matter and contaminants.

- Do not use products containing petroleum, solvents or citrus oils to prepare substrates as they can cause staining and expansion of the new flooring.

- Although this floor is waterproof, it is not aimed to be used as a moisture barrier. The concrete moisture vapor emissions should not exceed 8 lb / 3.63 kg (ASTM F1869) / 90 % RH (ASTM F2170) with a PH limit of 9 / max. 2.5 % moisture content (CM method).

- This product is also not to be installed in areas that have a risk of flooding such as saunas or outdoor areas.

- Existing sheet vinyl floors should not be heavily cushioned and not exceed more than one layer in thickness. Soft underlayment and soft substrates will diminish the products inherent strength in resisting indentations.

WOOD SUBFLOORS

- If this flooring is intended to be installed over an existing wooden floor, it is recommended to repair any loose boards or squeaks before you begin the installation.

- Nail or screw every 6" / 15 cm along joists to avoid squeaking.

- Basements and crawl spaces must be dry. Use of a 6 mil / 0.15 mm poly-film is required to cover 100 % of the crawl space earth.

- We recommend laying the flooring crossways to the existing floorboards.

- All other subfloors - Plywood, OSB, particleboard, chipboard, wafer board, etc. must be structurally sound and must be installed following their manufacturer's recommendations.

CONCRETE SUBFLOORS

- Existing concrete subfloors must be fully cured, at least 60 days old, smooth, permanently dry, clean, and free of all foreign material such as dust, wax, solvents, paint, grease, oils, and old adhesive residue. Curing agents and hardeners could cause bonding failure and should not be used.

- We recommend using a minimum 6 mil / 0.15 mm poly-film as a moisture barrier between the concrete subfloor and the flooring.

DO NOT INSTALL OVER

- Any type of carpet.
- Existing cushion-backed vinyl flooring.
- Floating floor of any type, loose lay, and perimeter fastened sheet vinyl.
- Hardwood flooring / wood subfloors that lay directly on concrete or over dimensional lumber or plywood used over concrete.

IMPORTANT NOTICE

In-floor Radiant Heat: Flooring can be installed over 1/2" / 12 mm embedded radiant heat using the floating method. Maximum operating temperature should never exceed 85°F / 30°C. Use of an in-floor temperature sensor is recommended to avoid overheating.

- Turn the heat off for 24 hours before, during and 24 hours after installation when installing over radiant heated subfloors.
- Before installing over newly constructed radiant heat systems, operate the system at maximum capacity to force any residual moisture from the cementitious topping of the radiant heat system.
- Make sure that the temperature in the room is maintained consistent between 70-80°F / 20-25°C before and during the installation.
- Floor temperature must not exceed 85°F / 30°C.
- Once the installation has been completed, the heating system should be turned on and increased gradually (5-degree increments) until returning to normal operating conditions.
- Refer to the radiant heat system's manufacturer recommendations for additional guidance.

Warning: Electric heating mats that are not embedded into the subfloor are not recommended for use underneath the floors. Using electric heating mats that are not embedded and applied directly underneath the floors could void the warranty for your floor in case of failure. It is best to install the flooring over embedded radiant floor heating systems and adhere to the guidelines listed above.

III. INSTALLATION

- Remove baseboard, quarter-round moldings, wall base, appliances and furniture from room. For best results, door trim should be under-cut to allow flooring to move freely without being pinched. After preparation work, sweep and vacuum the entire work area to remove all dust and debris.

- With a floating floor, you must always ensure you leave a 1/4" / 6 mm gap between walls and fixtures such as pillars, stairs, etc. Avoid applying silicone to the expansion gaps. These gaps will be covered with trim moldings after the floor is installed. **Important notice:** When installing in areas that are exposed to temperature over 40°C and to significant temperature fluctuations the expansion joint may be increased to 10 mm to secure the installation on the entire periphery and from all fixtures in the room.

- Divide sunrooms and rooms containing floor-to-ceiling windows from the surrounding installation area using expansion moldings, and ensure to widen the expansion gap to 10 mm specifically within these designated spaces.

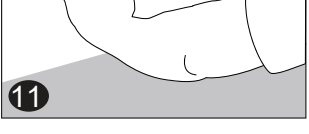
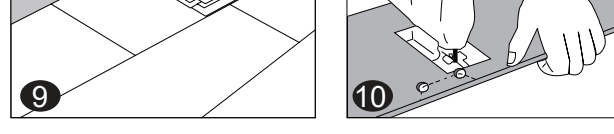
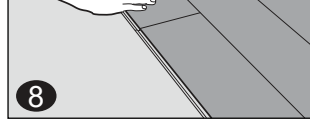
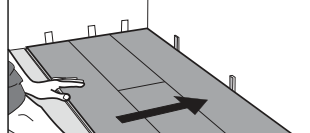
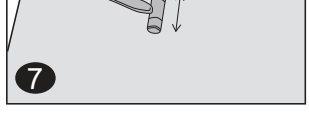
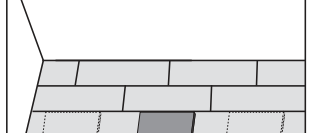
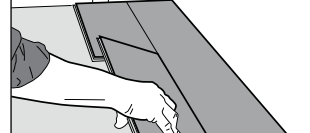
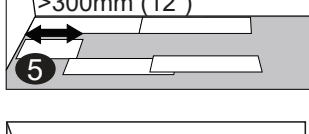
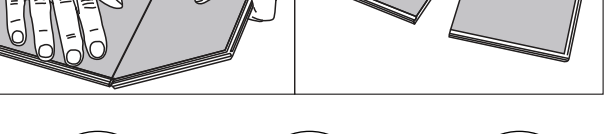
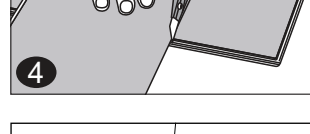
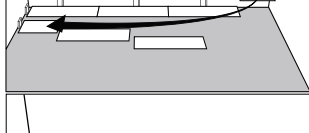
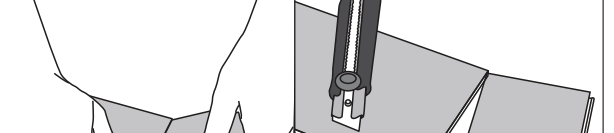
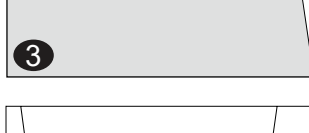
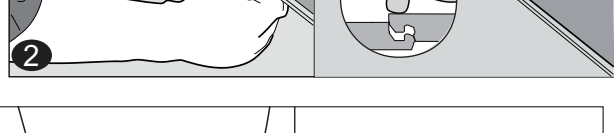
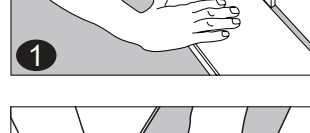
- Whenever possible, plan the layout so that the joints in the planks do not fall on top of joints or seams in the existing substrate. The end joints of the planks should be staggered a minimum of 8" / 20 cm apart. Do not install over expansion joints. Avoid installing pieces shorter than 12" / 30 cm at beginning or end of rows.

- Do not install your kitchen cabinets directly over your floor. The floor's quality can be guaranteed as long as the floor can move freely. Please note when installing heavy loose equipment directly on top of the flooring it is recommended not to exceed 200kg and the foot print of the equipment must not exceed 1200mm x 600mm.

- Decide the installation direction. It is recommended to install the boards perpendicular to the window following the direction of the main source of light.

- Measure the area to be installed: The board width of the last row shall not be less than 2" / 50 mm. If so, adjust the width of the first row to be installed. In narrow hallways, it is recommended to install the floor parallel to the length of the hall.

- This product has a pre-attached underlay. No additional underlay is required for installation. The use of additional underlay could damage the locking mechanism and will void the warranty



- 1. First row, first plank:** After thoroughly cleaning the subfloor, you should begin laying from left to right. Position the first plank so that grooved edge is facing you. Place the floorboard 1/4" / 6 mm from the left wall. Use spacers between the wall and the floorboard.

- 2. First row, second plank:** Drop the plank and gently tap down the end with a rubber mallet so it firmly locks into the previous plank until both are at the same height. Make sure both planks are perfectly aligned. It is crucial that after the short edges of two connecting planks are correctly aligned, and the rubber mallet contacts the plank in the area directly above the short edge, allowing for a correct locking.

Note: Tapping the area close to the short edge, but not directly above it, may result in permanent damage to the joint. Continue installing the first row until you reach the wall on the right.

IMPORTANT: If you notice both planks aren't at the same height or are not well locked together, please follow the disassembling instructions at the bottom of the page, disassemble and check if any debris stuck inside the lock is obstructing. Failure to properly line up the end joint and attempting to force it in while out of alignment could result in permanent damage to the end joint.

- 3. First row, last plank:** At the end of the first row, leave an expansion gap of 1/4" / 6 mm to the wall and measure the length of the last plank to fit.

- 4. To cut the plank:** Use a simple utility knife and ruler, and with the top side facing up, cut heavily and several times on the same axis. The knife will not go through the surface but make a deep cut. You can then lift one half of the plank using your other hand to hold down the second placing it very close to the cut. The plank will split naturally.

- 5. Second row, first plank:** Start the second row with the leftover cut part of the last plank of the previous row. This small plank should measure at least 12" / 30 cm. Otherwise, cut a new plank in half and use it to begin the second row. The end joints of each adjoining row should not be closer than 8" / 20 cm to each other. Whenever practical, use the piece cut from the preceding row to start the next row.

- 6. Second row, second plank:** Click the long side of the plank into the previous row and place it tight to the short end of the previous plank with an angle of 25-30 degrees. Drop the plank and gently tap on the end with a rubber mallet so it firmly locks into the previous plank until both are at the same height. Make sure both planks are perfectly aligned.

- 7. After finishing the installation of every row:** Use scrap pieces and a small hammer or rubber mallet to gently tap the planks into the click of the previous row to make sure they are tightly clicked together and make sure there is no gap between the long side of the planks installed. Any gapping can compromise the whole installation.

- 8. Tip:** After the first 2-3 rows of planks are installed, they should be checked with a string line to ensure that rows are still running straight. If they are not, it could be that the starting wall has some irregularities that caused bowing in the installation. If so, the starting row of planks may have to be scribed and re-trimmed to account for any unevenness in the wall. This can be done without having to disassemble the beginning rows.

- 9. To lay the last row:** Position a loose board exactly on top of the last row laid. Place another board on top, with the tongue side touching the wall. Draw a line along the edge of this boards, to mark the first board. Cut along the edge of this board to mark the first board. Cut along this line to obtain the required width. Insert this cut board against the wall. The last row should be at least 2" / 50 mm wide. The spacers can then be removed.

- 10. Holes for pipes:** Measure the diameter of the pipe and drill a hole that is 1/2" / 12 mm larger. Saw off a piece as shown in the figure and lay the board in place on the floor. Then lay the sawed-off piece in place.

- 11. Door molding and skirting:** Lay a board (with the decorative side down) next to the door molding and saw as shown in the figure. Then slide the floorboard under molding. When the installer needs to cut and install floorboards under door molding. It's recommended to use a high-grab, high-shear, hard-setting adhesive.

INSTALLATION IN WET AREAS

IMPORTANT: This product is not warranted for installation in wet areas with running water and areas with built-in drains, e.g., pool or shower areas.

- Use a T-molding to separate the wet area from the rest of the installation.
- Fill the expansion spaces with a compressible PE foam backer rod and use a flexible 100% silicone sealant around the entire perimeter of the installation before installing moldings. Branded and generic silicone tubes are available at any local home center or hardware store.

IMPORTANT: Do not use acrylic sealant.

- Apply silicone sealant to connections to doorframes or any other fixed objects.

IV. FINISHING THE INSTALLATION

Replace molding or wall base, allowing slight clearance between the molding and planks. Nail the molding to the wall surface, to touch the flooring. At doorways and at other areas where the flooring planks may meet other flooring surfaces, it is preferable to use a "T" molding, or similar, to cover the exposed edge but not pinch the planks. Leave a small gap between the planks and the adjoining surface.

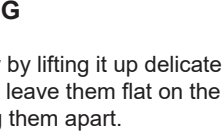
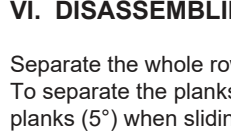
V. MAINTENANCE

- Sweep and vacuum daily using soft bristle attachments.
- Clean up spills and excessive liquids immediately.
- Damp mop as needed and use cleaners recommended for vinyl flooring.
- The use of residential steam mops on this product is allowed. Use at lowest power with a suitable soft pad, and do not hold a steam mop on one spot for an extended period of time (longer than 5 minutes). Refer to the steam mop's manufacturer instructions for proper usage.
- Use proper floor protection devices such as felt protectors under furniture.
- Place a walk-off mat at outside entrances to reduce the amount of dirt brought into your home. Do not use mats with a latex or rubber backing since these backings can cause permanent discoloration.
- Do not use abrasive cleaners, bleach or wax to maintain the floor.
- Do not drag or slide heavy objects across the floor.

VI. DISASSEMBLING

Separate the whole row by lifting it up delicately at an angle.

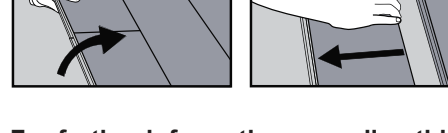
To separate the planks, leave them flat on the ground and slide them apart. If planks do not separate easily, you can slightly lift up the planks (5°) when sliding them apart.



For further information regarding this luxury vinyl floor product, please refer to www.NovoCoreFloor.com.

Warranty Terms and Conditions downloadable on Website

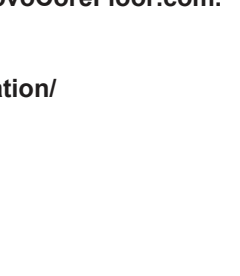
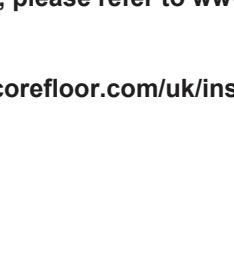
Installation advice available at YouTube link: <https://www.novocorefloor.com/uk/installation/>



25
Wickes Building Supplies Limited
Vision House, Colonial Way,
Watford, WD24 4JL

EN 14041:2004+AC:2006
AB No:0321
DOP No.: WIX-4070
RLVT Flooring with click
4.5mm including 1mm backing
Installation type : Floating

Reaction to fire: Bfl-s1
Formaldehyde emission: E1
Slipperiness: Class DS
Thermal conductivity: 0.098 W/(m.k)



www.NovoCoreFloor.com

FOLLOW US

