

Tropea Beach toilet seat

MODEL IMAGES



FEATURES

Art.No. 547323

- Thermoplast
- SoftClose & TakeOff
- D-Shape
- Wrapover
- Backboard
- flat
- Seat buffer (SPQ2) white, 4 piece
- Lid buffer (DPZX) white, 2 piece
- CO₂ Footprint: 2,91 kg CO₂e
- Net weight: 1,53 kg

COLOUR

- white
- Colour code: 101

SOFT  CLOSE original

TAKE  OFF original

EASY  FIX

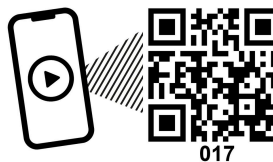
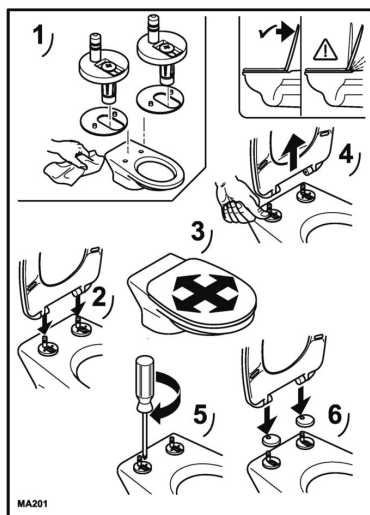
HINGE PICTURES



HINGE

- C4501H
- 413997
- SoftClose original / Hybrid / Expansion dowel (Haro)
- TopFix
- Screw length: 36,8 mm
- Hinge pivot point: 24,3 mm
- Adjustments:
12,5 mm - 24,3 mm

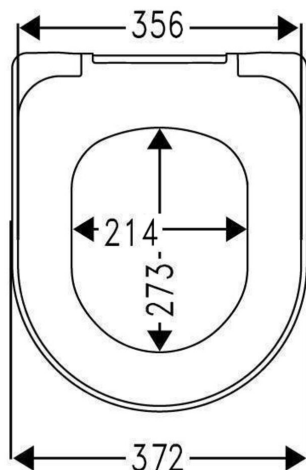
INSTALLATION INSTRUCTIONS



Tropea Beach toilet seat

Dimensioned drawing (mm)

Model length: 411 mm



Various data

Gross weight: 2,28 kg

EAN Number: 4016959235178

Label:



Packed unit:



7 PCE



84 PCE

Inner box dimensions: 383x49x460 mm

CARE INSTRUCTIONS

This toilet seat has been made with care and precision using high-quality and environmentally friendly materials. If you follow a few simple cleaning instructions, you will enjoy this quality product for a long time. The closed, nonporous surface provides the best conditions for optimum hygiene. Do not use abrasive, chlorinated or acidic cleaning agents, as these can cause discolouration, paint peeling or flash rust on the hinges. Neutral soap or mild and natural household washing-up liquids are best for thorough cleaning. After cleaning, wipe with a damp cloth. Leave the toilet seat and seat cover up as long as the flushing process continues or as long as there are stronger cleaning agents in the toilet bowl. Thank you for your attention. Enjoy your new toilet seat.