

Step by step installation guide - Guttering



1 To position the running outlet accurately, hold a plumb line against the fascia directly over the drain. Mark the position on the fascia with a pencil. Fit the outlet no more than 50mm below the level of the roof tiles.



2 Fit a fascia bracket just below the top of the fascia board at one end of the run of guttering (opposite end of the outlet). Tie a plumb line (string) around the base of the bracket.



3 Stretch the plumb line from the bracket along the fascia board and tie it to the outlet. Using a spirit level, check that there is a fall towards the outlet (1.350 is recommended) to encourage water to drain efficiently.



4 Mark the position of the fascia brackets, spacing them no more than 1000mm apart (400mm in areas of heavy snowfall) and no more than 150mm from any angle or stepend.



5 Fix the rest of the fascia brackets. **RECOMMENDED:** Use two 25mm x 5mm roundhead brass or zinc screws when fitting fascia brackets.



6 Starting at the outlet, fit the first length of gutter using the 'back to front' rule (see below).

Fit a union bracket at the other end of the first length and screw it into the fascia, then fit the next length of gutter into it.

Continue joining lengths.

Make sure all joints line up with the insertion depth marked in the fittings.



7 Cut the last section of gutter to fit using a hacksaw and fit a stepend.

REMEMBER: Start by planning your Installation using component diagrams to assist you in selecting the correct materials.

'BACK TO FRONT' RULE: Tilt the gutter to fit under the back clip and snap in at the front.



Roofline, Window and Cladding Systems



Rainwater Systems



Soil & Waste Systems



Underground Drainage Systems



MDPE Systems



Hot & Cold Plumbing Systems

Step by step installation guide - Downpipe



1 Using a plumb line, mark a vertical line on the wall from the outlet to the drain.



2 Hold a downpipe clip centrally over the line and mark the fixing holes on the wall with a pencil. Repeat down the wall, spacing pipe clips no more than 1.8m apart.



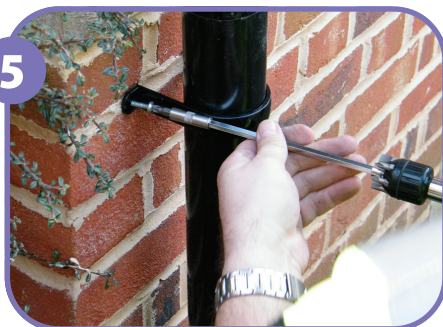
3 Drill the fixing holes.



4a Working from the top downwards, install the downpipe. If additional lengths of downpipe are required, join using a socket and pipe clip.



4b Fit the pipe clips to the downpipe and screw them into the wall.



5 Fit the pipe clips to the downpipe and screw them into the wall.



6 Fit the shoe at the bottom of the downpipe so that it directs water into the drain, if required. Secure the joint with a pipe clip.

RECOMMENDED:
Secure pipe/socket clips with two 32mm x 6.5mm screws.



Roofline, Window and Cladding Systems



Rainwater Systems



Soil & Waste Systems



Underground Drainage Systems



MDPE Systems



Hot & Cold Plumbing Systems