

Selecting the Correct Lintel

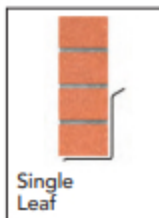
STEP 1: Select Wall Type



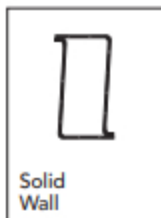
Cavity Wall



Timber Frame



Single Leaf



Solid Wall



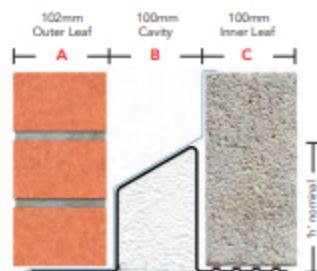
Internal Partition



External Solid Wall

You will need to know:

- A Outer Leaf = 102mm Brick
- B Cavity = 100mm
- C Inner Leaf = 100mm Block



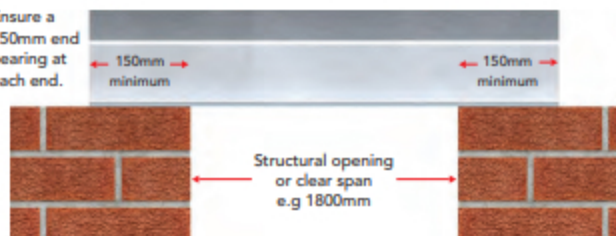
STEP 2: What is the length of the lintel?

How wide is the structural opening?

- 1 Measure the size of the structural opening i.e. the clear span between the masonry supports.
- 2 Add 150mm minimum bearing to each end.

Example lintel length =
 $150 + 1800 + 150 = 2100\text{mm}$

Ensure a 150mm end bearing at each end.



STEP 3: What is the load to be supported by the lintel?

The load on a lintel comes from...

- 1 Masonry
- 2 Roof Loads: Truss/Attic/Cut/...
- 3 Floor Loads: Joists/Slabs/...
- 4 Live Loads: Residential use/
Commercial use/Industrial use/...
- 5 Combination of above



NOTE: The load ratio between outer and inner leaves of the cavity wall will need to be determined. If you are not skilled in assessing loads please contact IG's Technical Team on 01633 486 486 and avail of our free scheduling service.