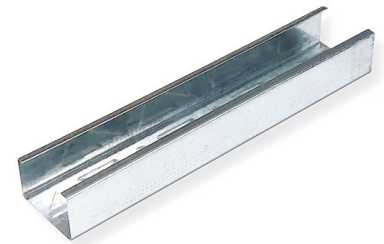


## Product Data Sheet

# Knauf C Stud



**Knauf C Stud is a galvanized lightweight steel section for use in non-load-bearing Knauf partition systems.**

### Areas of Application

To be used as part of a Knauf partition system.

### Compliance Standards

BS EN 14195:2014

### Key Benefits

- Galvanized to protect against corrosive elements
- Easy to cut
- Fully recyclable
- EPD certification available

### Performance Data

Reaction to Fire (R2F)	Yield Strength
A1	NPD

## Technical information

Dimensions and Weights							
Length (mm)	Size/Webb (mm)	Flange (mm)	Gauge (mm)	Weight (kg/piece)	Material Number	Coating Type/Weight (gsm)	Coating thickness (microns nominal in accordance with BS EN 10346:2015)
2400	50	35	0.55	1.4	243861	Zinc – 140	10
2500	50	35	0.55	1.5	243863	Zinc – 140	10
2700	50	35	0.55	1.5	243865	Zinc – 140	10
3000	50	35	0.55	1.7	243869	Zinc – 140	10
3600	50	35	0.55	2.1	243870	Zinc – 140	10
3000	60	35	0.55	1.8	243876	Zinc – 140	10
3600	60	35	0.55	2.2	243877	Zinc – 140	10
2400	70	35	0.55	1.6	243880	Zinc – 140	10
2700	70	35	0.55	1.8	243887	Zinc – 140	10
3000	70	35	0.55	2.0	243889	Zinc – 140	10
3600	70	35	0.55	2.4	243898	Zinc – 140	10
4200	70	35	0.55	2.8	243909	Zinc – 140	10
3600	92	35	0.55	2.6	243923	Zinc – 140	10
4200	92	35	0.55	3.1	243930	Zinc – 140	10
2700	146	35	0.55	2.7	243847	Zinc – 140	10
3000	146	35	0.55	3.0	243848	Zinc – 140	10
3600	146	35	0.55	3.5	243849	Zinc – 140	10
4200	146	35	0.55	4.1	243851	Zinc – 140	10
3600	70	35	0.7	3.0	243917	Zinc – 140	10
4200	70	35	0.7	3.5	243919	Zinc – 140	10
3600	92	35	0.7	3.4	243933	Zinc – 140	10
4200	92	35	0.7	4.0	243935	Zinc – 140	10
4200	146	35	0.7	5.3	243858	Zinc – 140	10

## Sustainability

### Total Recycled Content

15-20%

### Recyclability

Fully recyclable

## Storage and Handling

No temperature constraints, but salt spray and corrosive atmospheric conditions must be avoided. Must be kept in dry conditions.

## Packaging

Components are tied with filament tape and on wooden bearers.

## Disposal/Repair

Separate metal from any non-metal components and recycle in accordance with local authority requirements.

European Waste Catalogue code: 17 08 02

## Health & Safety

Please refer to our Safety Data Sheet for guidance on Personal Protection Equipment required for the handling and installation of this product.

## Application / Installation

Please refer to our system installation instructions for details on how to install C Stud as part of a Knauf system.

## Additional Documentation

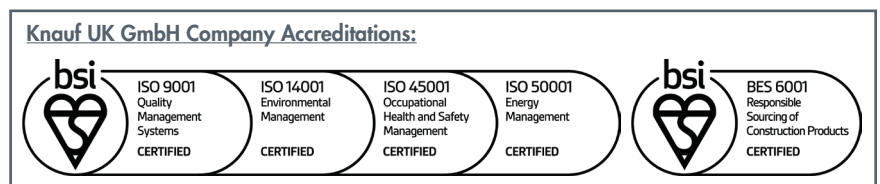
[Declaration of Performance UKCA](#)

[Declaration of Performance CE](#)

[Safety Data Sheet](#)

## Certification

[Environmental Product Declaration](#)



### Customer Service

UK Tel: 0800 521 050  
Eire Tel: 01 4620739  
Email: [cservice@knauf.com](mailto:cservice@knauf.com)

### Technical Service

0800 521050 (option 2)  
Live Webchat 09:00 -17:00  
[technical-uk@knauf.com](mailto:technical-uk@knauf.com)

### Website

[www.knauf.co.uk](http://www.knauf.co.uk)  
[www.knauf.ie](http://www.knauf.ie)

### Address

Knauf  
Kemsley Fields Business Park  
Sittingbourne  
Kent ME9 8SR

KML100462

The information given in this publication is believed to be current and accurate as at the date of publication, but no warranty, express or implied is given. Updates will not be automatically issued.

© Copyright Knauf 2023

Creation Date: 31/08/2023  
Revision Reference: 001  
Revision Date: 31/08/2023