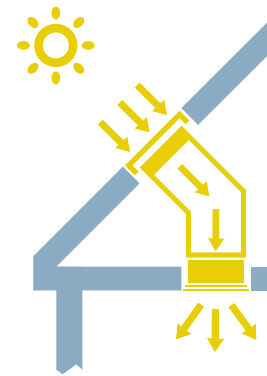


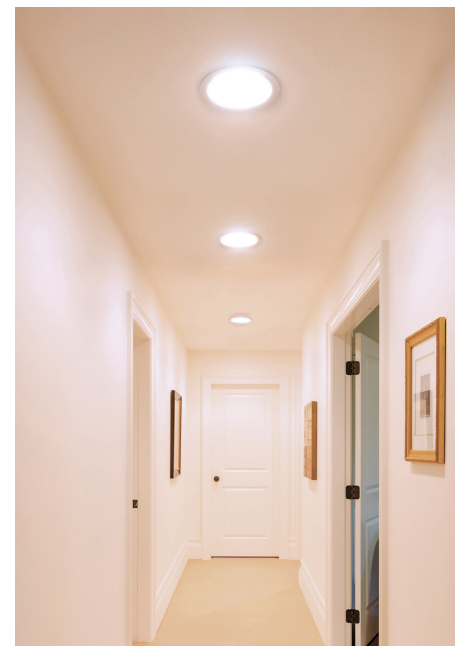
Sunlite Light Tube System

A Keylite Sunlite transports natural daylight into areas where conventional pitched or flat roof windows cannot be used.



Features

- ▶ The Keylite Sunlite System consists of a roof mounted external glazing element designed to look like a small Keylite Roof Window.
- ▶ Transforms dark or windowless rooms, considered ideal for bathrooms, stairways and corridors.
- ▶ Saves energy through reducing the requirement of artificial light.
- ▶ Available with a 'Rigid' or 'Flexible' light tube to suit your roof design. These tubes are lined with a mirrored finished in order to provide optimum specular reflectance.
- ▶ Natural daylight enters the Sunlite via the external glazing element and is reflected down the intermediate tubes and into the property through the double glazed ceiling diffuser.
- ▶ Keylites Sunlite ceiling diffuser is uniquely designed so that it is magnetically secured to the ceiling; the benefits of such an innovation are the reduction in internal fixings as well as the ability to easily remove the diffuser for cleaning purposes
- ▶ The diffuser may also be adapted to allow for additional ventilation purposes below.
- ▶ Square ceiling diffusers are available upon request for installation in place of square tiles on a suspended ceiling.
- ▶ The unique connections on the one-piece glazing element allow for an easier installation due to the snap in twist connectors located along the locking ring resulting in a reduction of industrial tape being used.
- ▶ An optional ventilation flap is provided with the external glazing element so as to combat the risk of condensation occurring.



		Size			
		250mmø	350mmø	450mmø	530mmø
Sunlite Window System					
Flush Fit Glass Sunlite	Rigid System	-	SLRS 350	SLRS 450	SLRS 530
	Flexi-System	-	SLFS 350	SLFS 450	SLFS 530
Polycarbonate Dome Sunlite	Rigid System	SLRS 250	-	-	-
	Flexi-System	-	-	-	-
Flat Roof Polycarbonate Sunlite	Rigid System	-	SLRS 350	SLRS 450	SLRS 530
	Flexi-System	-	SLFS 350	SLFS 450	SLFS 530

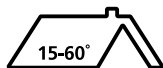
Sunlite Accessories

Sizes	Circular Fluorescent Lamps	Rigid Extension (625mm)
250mmø	SLL 250	SLRE 250
350mmø	SLL 350	SLRE 350
450mmø	SLL 450	SLRE 450
530mmø	SLL 530	SLRE 530

Recommended Usage				
	250 mm (Diameter)	350 mm (Diameter)	450 mm (Diameter)	530 mm (Diameter)
Rigid tube	En suite, WC, Walk-in-wardrobe	Bathroom, Hallway, Small Landing Suitable for rooms 4m x 4m	Bathroom, Landing, Offices, Corridors Suitable for rooms 5m x 5m	Commercial & Retail, Corridors, Offices Suitable for rooms 6m x 6m
Flexi-tube Max. recommended length 2m	-	En suite, WC, Walk-in-wardrobe	Bathroom, Hallway, Small Landings Suitable for rooms 4m x 4m	Living areas, Large Landings, Kitchen Suitable for rooms 5m x 5m

Note: When placing your order please specify Tile, Slate or Flat Roof Flashing. If roof void is more than 2m please call the Keylite Technical Team.

Pitched Roof System



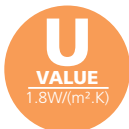
Flush Fit Glass Sunlite

Diameter

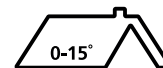
- ▶ 530mm
- ▶ 450mm
- ▶ 350mm

Tube length

- ▶ 2m



Flat Roof System



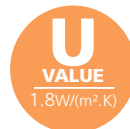
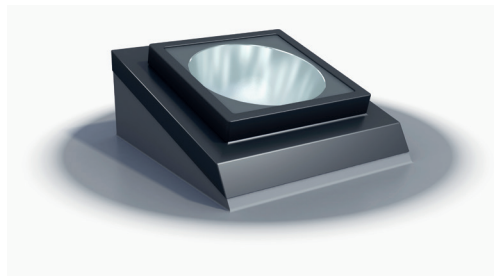
Flat Roof Sunlite

Diameter

- ▶ 530mm
- ▶ 450mm
- ▶ 350mm

Tube length

- ▶ 800mm



Rigid Light Tube System

For optimum performance

Keylite's rigid tube system is made using a hard wearing, mirror finished, polished aluminium tube with 98% reflectance.



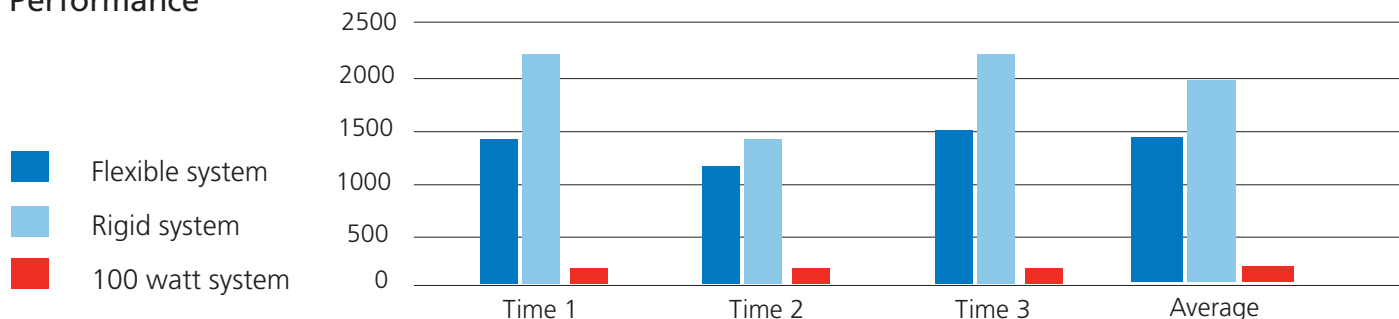
Flexi Light Tube System

For versatility

Recommended for installations where obstructions within the roof prohibit the use of a rigid system.



Performance



UK

Unit 3 Gateway Road, Burton Gateway,
Burton upon Trent, DE13 8FL

T: +44 (0) 1283 200 158
E: info@keyliteuk.com

NI & ROI

Derryloran Industrial Est. Sandholes Road,
Cookstown, Co. Tyrone, BT80 9LU

T: +44 (0) 28 8675 8921
E: info@keylite.co.uk