

**BARDOLINE®
CLASSIC**



BUNGALOW



CARPORT

Made by me!



8803105A - 12/2018 - Not contractually binding. All information given is for illustrative purposes only and may be modified without notice.



**BARDOLINE®
CLASSIC**

**BARDOLINE®
CLASSIC**

Made by me!



Before



After

**QUALITY SHINGLES
FOR ORIGINAL ROOF**

TOOL SHELTER



Aesthetic



Easy to install



Impact resistant



Watertight



A perfect solution for all types of roofs.
Do you feel the need to liven up your new garden shed?

With **BARDOLINE®** you can do it fast, easily and reliably! Try it, you will be amazed!



Fully compliant with regulations



Sustainable product & production because we care about environment!

ONDULINE BUILDING PRODUCTS LTD
Dawson House, 5 Jewry Street
London, EC3N 2EX
onduline.co.uk



Onduline French joint stock company
share capital of €11,323,485.05
RCS Nanterre 552 088 361

Made by me!

Onduline®
Lightweight roofing systems

Onduline®
Lightweight roofing systems

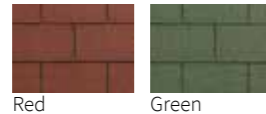
BARDOLINE® CLASSIC

With **BARDOLINE®**, you can cover your auxiliary building roof all by yourself, in a practical and long lasting way. AA Fire rated roof shingles suitable for any type of roof.

BARDOLINE® CLASSIC

Shape and colour range

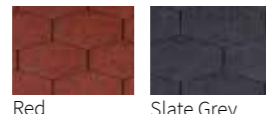
RECTANGULAR



BEAVER

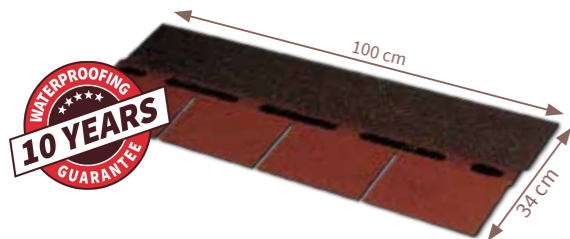


TRIANGULAR



Technical characteristics

Length	100 cm
Width	34 cm
Tiles per m ²	7 pcs
Weight per m ²	9,4 kg



Onduline 5 years warranty for waterproofing, valid if the product has been installed in full compliance with installation recommendations (more on onduline.com).

Installation in few and easy steps



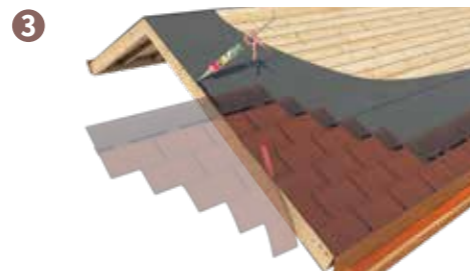
Support and the 1st tile row

Installation is done on full wooden decking only (thickness >24 mm). For pitches < 35% is recommended to install a previous protection layer. Prepare base course cutting lengthways tile tabs. The eaves course is then bonded to the adhesive tabs of the base course.



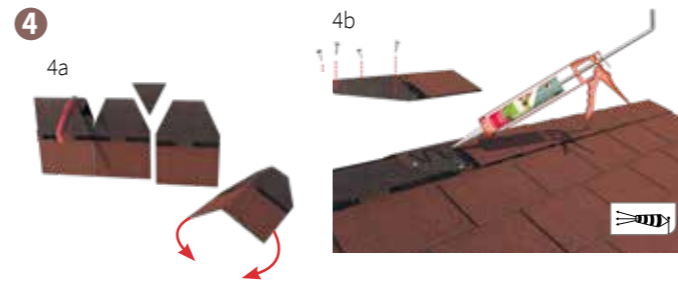
Fixing

Use five 20 mm large headed galvanised nails per shingle. Nail through strip centre band and into the top edge of the lower course.



Installation basic rule

If needed shorten the first left (or right) strip by half a tab. On completion check the tile bonding, use adhesive to reinforce laps as required.



Ridge

To complete the ridge line, start always cutting shingles to make the ridge (see 4a). Make sure that the bitumen shingles are sufficiently covered on both sides of the roof. The direction of the overlap is made in the opposite direction to prevailing winds (see 4b).



Job completed

BARDOLINE® shingles provide an attractive, colored and long lasting finishing to a wide variety of garden buildings.

Accessories



BARDOLINE DETAIL STRIP

Available in matching colours with the roof shingles for seamless finish



GARDEN SHED



Made by me!

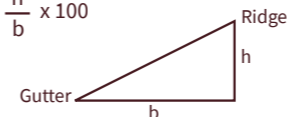
How to cut and trim your product?

You can easily cut the shingles with a roofers' cutter.



CALCULATE THE PITCH OF YOUR ROOF

$$\text{Pitch (\%)} = \frac{h}{b} \times 100$$



Watch the video!