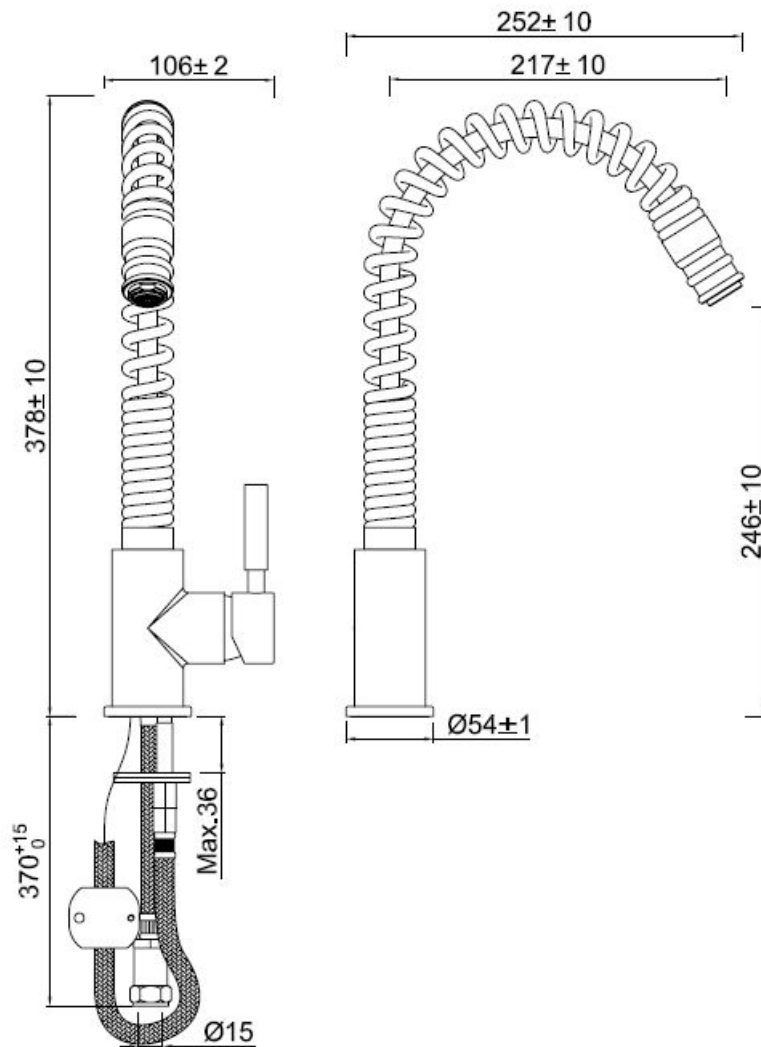


207004 - Spirale Mono mixer

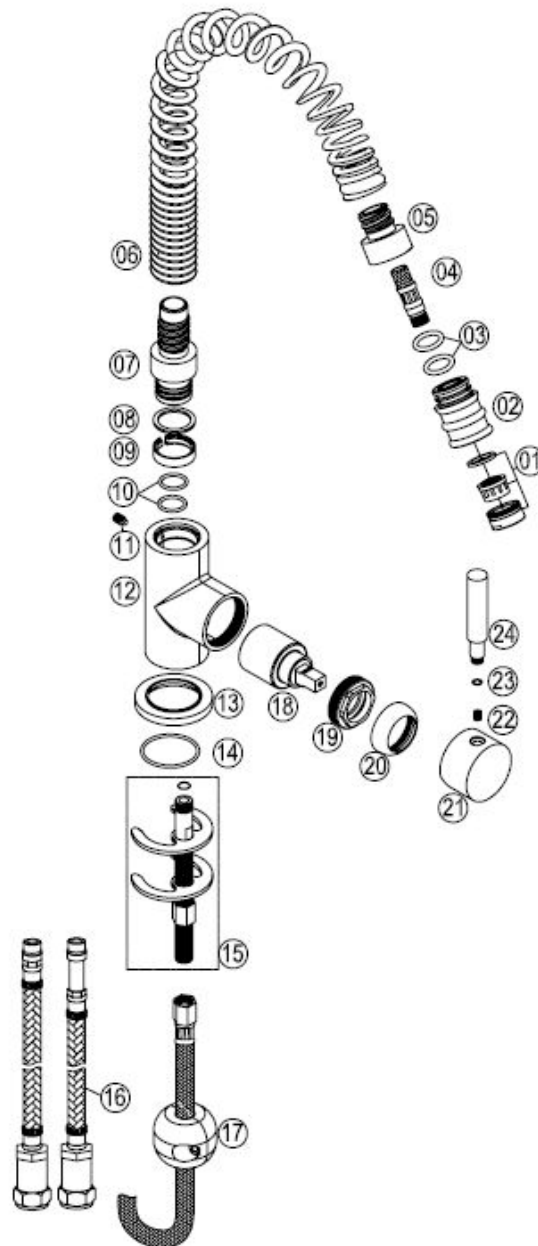
Useful Information	
Minimum operating pressure	0.5 bar
Maximum operating pressure	5 bar
Guarantee Length	5 years



Technical Diagram



Exploded Diagram



Item Number	Supplier Ref	Description	Quantity	Material	Spares Available
1	A06-A	Aerator	1	Brass+PE+EPDM	Yes
2	M9604T-02-04	Adaptor	1	BRASS	No
3	OR021	O Ring	2	EPDM	No
4	BZG12-10-1500	Braided Connectors	1	Stainless Steel+BRASS+EPDM	No
5	M9604T-02-03	Adaptor	1	BRASS	No
6	M9604T-02-02	Spring Spout	1	Stainless Steel	No
7	M9604T-02-01	Adaptor	1	BRASS	No
8	M0112-02-01	Washer	1	POM	Yes
9	M0112-02-02	Block Ring	1	PE	Yes

10	OR131	O ring	2	EPDM	Yes
11	SC4-10SND	Screw	1	Stainless Steel	Yes
12	M9604TZ-01	Tap Body	1	BRASS	No
13	N30-G	Flange	1	ZINC	Yes
14	N25-G	Washer	1	NBR	Yes
15	N9604T	Fixing kit	1	Steel+NBR+Brass	Yes
16	BZG10-1/2"-350-03	Braided Connectors	1	Stainless Steel+BRASS+ EPDM	Yes
17	N9604T-02	Aggravation Piece	1	STEEL+Stainless Steel	Yes
18	35D-1	Cartridge Assembly	1	Ceramic Disc+PPM+NBR	Yes
19	N31-B	Cartridge Clamp	1	BRASS	Yes
20	S90	Valve Cover	1	BRASS	Yes
21	H96-D02	Handle Seat	1	ZINC	Yes
22	SC5-6SN	Screw	1	Stainless Steel	Yes
23	OR027	O Ring	1	EPDM	Yes
24	H96-B01	Handle Lever	1	BRASS	Yes

Flow Rates

FAQ

What should I do if my tap is dripping/leaking?

Cleaning the cartridge (if water dripping from tap)

Before carrying out any maintenance, turn off the mains water supply.

1. Unscrew the lever, loosen the grub screw.
2. Remove the handle, cover,.
3. Remove the cartridge and retaining nut using a suitable spanner, clean the cartridge
4. thoroughly under cold water to remove any build up of limescale or debris.
5. If necessary replace the cartridge.
6. Replace the cartridge into the body, tighten the retaining nut using a suitable
7. spanner.
8. Replace the cover and handle, tighten the grub screw and re-fit lever to handle.

What does the Guarantee Cover?

The Guarantee Covering leakage, manufacturing defects and Chrome plating.

The guarantee does not cover:

- Damage or defects caused by:
 - general wear and tear (including special non-chrome finishes; components such as filters, seals, 'O'rings and washers)
 - incorrect installation
 - repair using non- PPI parts
 - accidental or wilful misuse
 - corrosion and the use of inappropriate cleaning products.
 - system debris including the build up of limescale (which can be controlled through regular servicing and maintenance).
- Compensation for loss of use of the product or consequential loss of any kind.