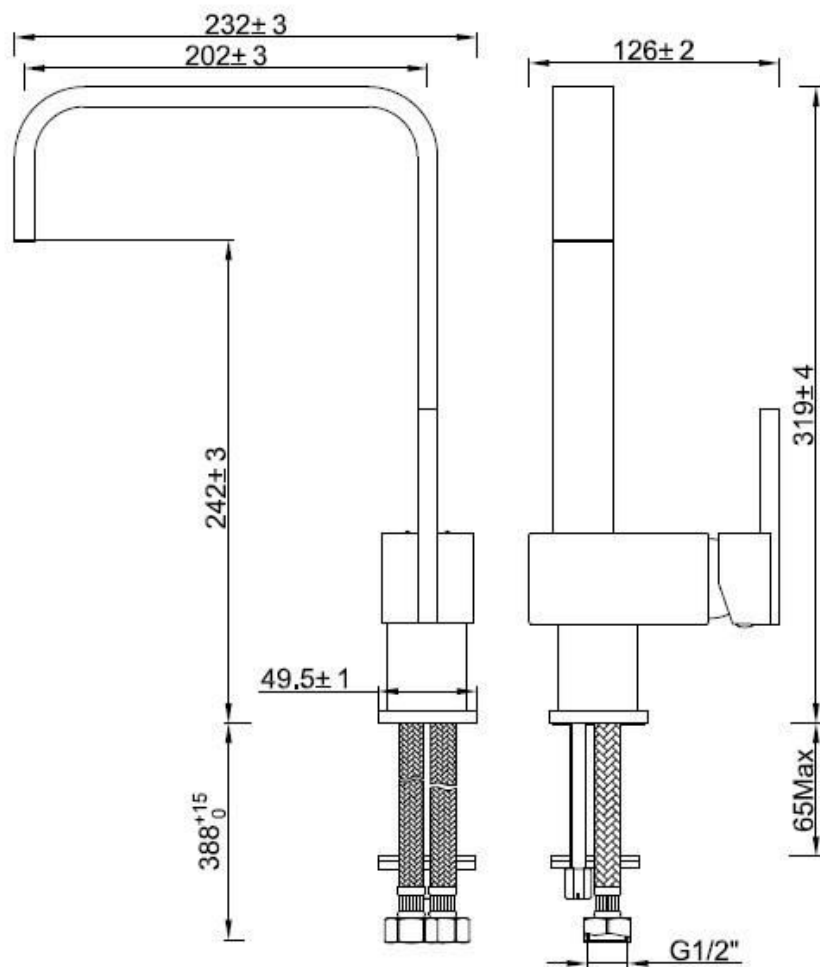


207005 - Curve Mono mixer

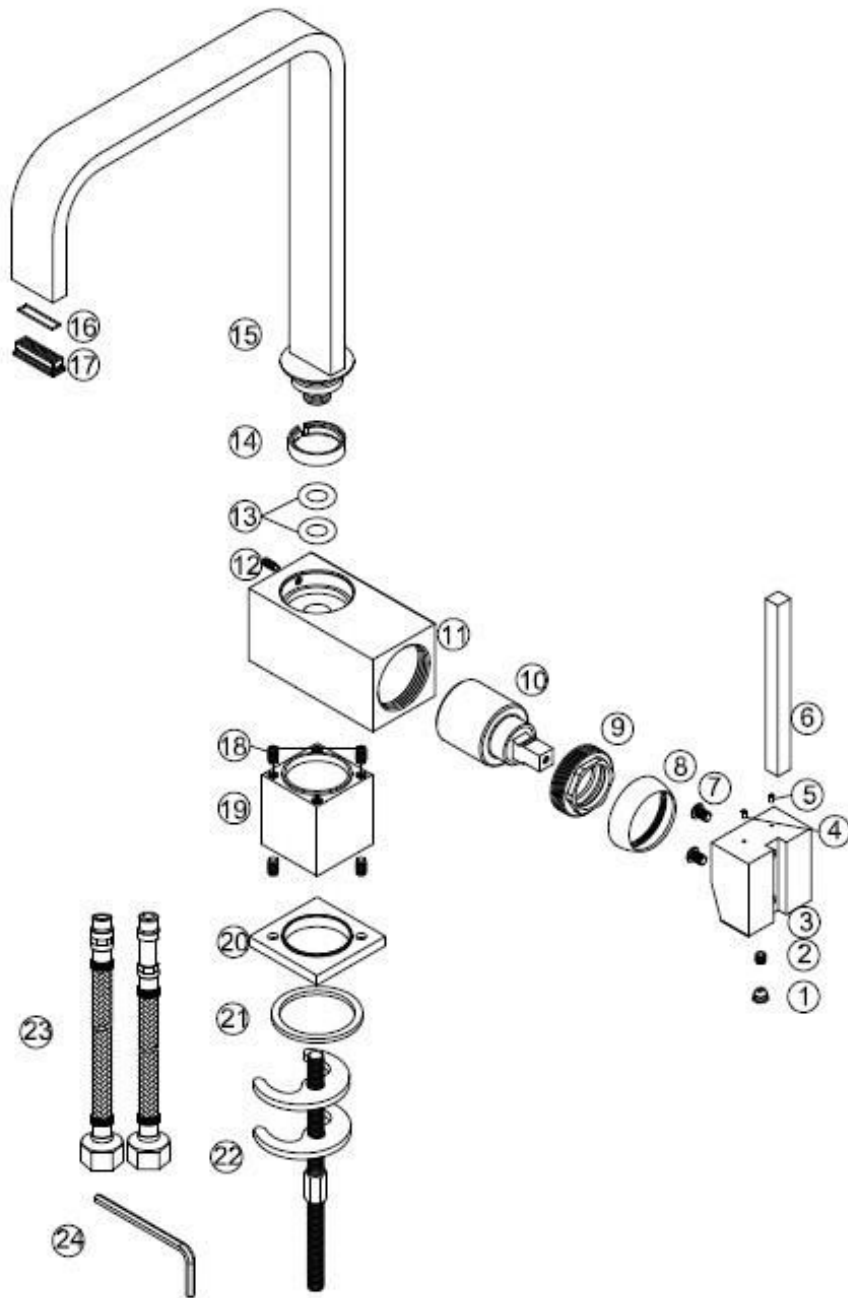
Useful Information	
Minimum operating pressure	0.3 bar
Maximum operating pressure	5 bar
Guarantee Length	5 years



Technical Diagram



Exploded
Diagram



Item Number	Supplier Ref	Description	Quantity	Material	Spares Available
1	P90	Indice	1	ABS	Yes
2	SC5-4SN	Screw	1	Stainless Steel	Yes
3	H247L-Z	Handle Seat	1	ZINC	Yes
4	P247-C	Indice(Cold)	1	ABS	Yes
5	P247-H	Indice(Hot)	1	ABS	Yes
6	H247L-G	Handle Lever	1	BRASS	Yes
7	SC4-6P	Screw	2	Stainless Steel	Yes
8	S90	Valve Cover	1	BRASS	Yes

9	N31-B	Cartridge Clamp	1	BRASS	Yes
10	35D-1X	Cartridge Assembly	1	Ceramic Disc+PPM+NBR	Yes
11	M33247AZ-01	Tap Body	1	BRASS	No
12	SC4-10SND	Screw	1	Stainless Steel	Yes
13	OR040	O ring	2	EPDM	Yes
14	M33247-N1	Block Ring	1	POM	Yes
15	M33247A-02	Spout	1	BRASS	No
16	A247-02	Washer	1	EPDM	Yes
17	A247-01	Flow straightener	1	POM	Yes
18	SC5-8SN	Screw	4	Stainless Steel	No
19	M33247A-03	Body Seat	1	BRASS	No
20	N247-A	Flange	1	BRASS	Yes
21	N134-B02	Washer	1	EPDM	Yes
22	N247-B	Fixing kit	1	Steel+NBR+Brass	Yes
23	BZG10-1/2"-45 0	Braided Connectors	1	Stainless Steel+BRASS+ EPDM	Yes
24	N106DM-03	Allen Key	1	STEEL	Yes

Flow Rates

FAQ

What should I do if my tap is dripping/leaking?

Cleaning the cartridge (if water dripping from tap)

Before carrying out any maintenance, turn off the mains water supply.

1. Remove the cap, grub screw, handle, cover and retaining nut.
2. Remove the cartridge using a suitable spanner, clean thoroughly under cold water to
3. remove any build up of limescale or debris.
4. If necessary replace the cartridge.
5. Replace the cartridge into the body, tighten the valve using a suitable spanner.
6. Replace retaining nut, cover and handle, tighten the grub screw and re-fit cap to

handle.

What does the Guarantee Cover?

The Guarantee Covering leakage, manufacturing defects and Chrome plating.

The guarantee does not cover:

- Damage or defects caused by:
 - general wear and tear (including special non-chrome finishes; components such as filters, seals, 'O'rings and washers)
 - incorrect installation
 - repair using non- PPI parts
 - accidental or wilful misuse
 - corrosion and the use of inappropriate cleaning products.
 - system debris including the build up of limescale (which can be controlled through regular servicing and maintenance).
- Compensation for loss of use of the product or consequential loss of any kind.