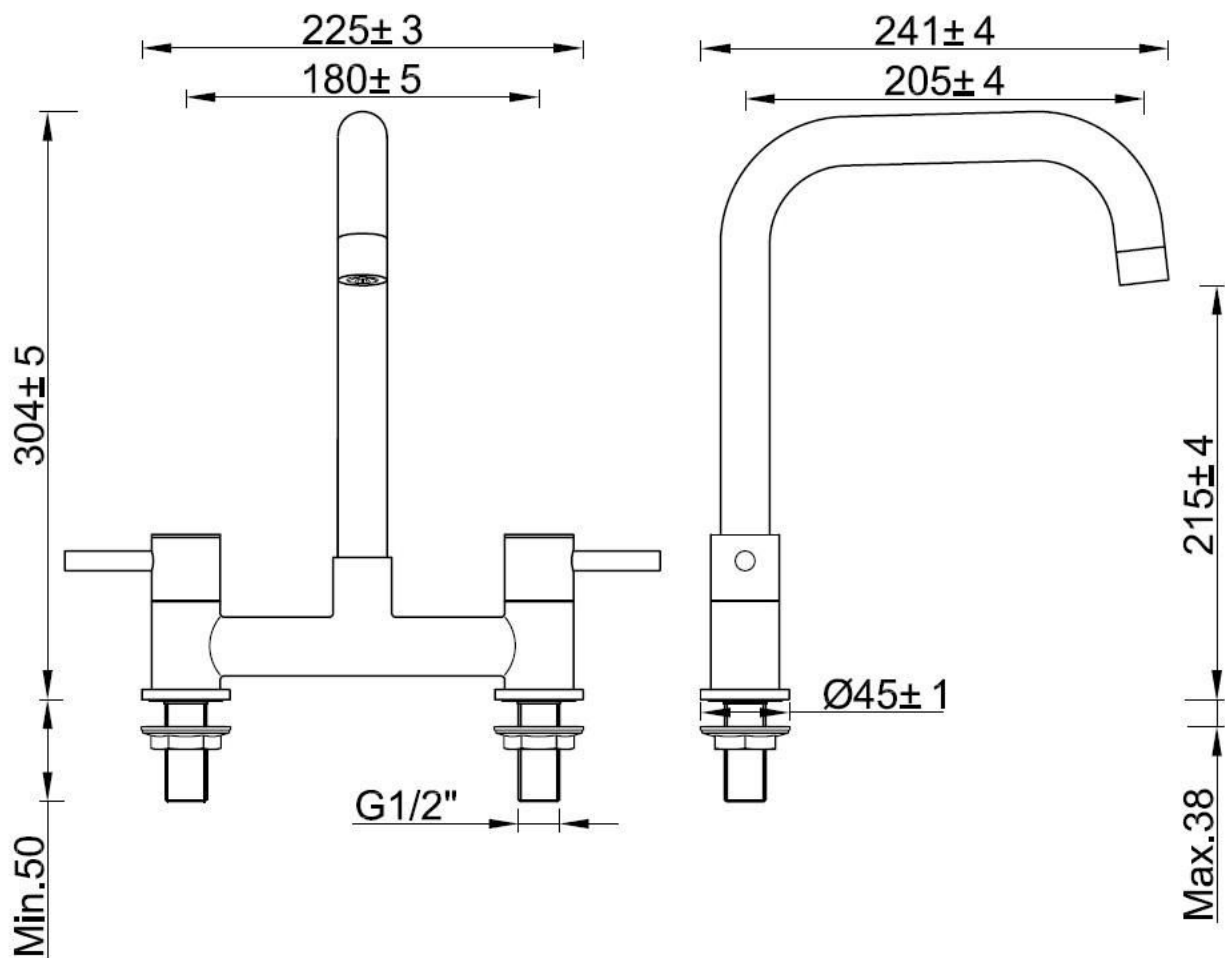


207009 - Seattle Bridge mixer

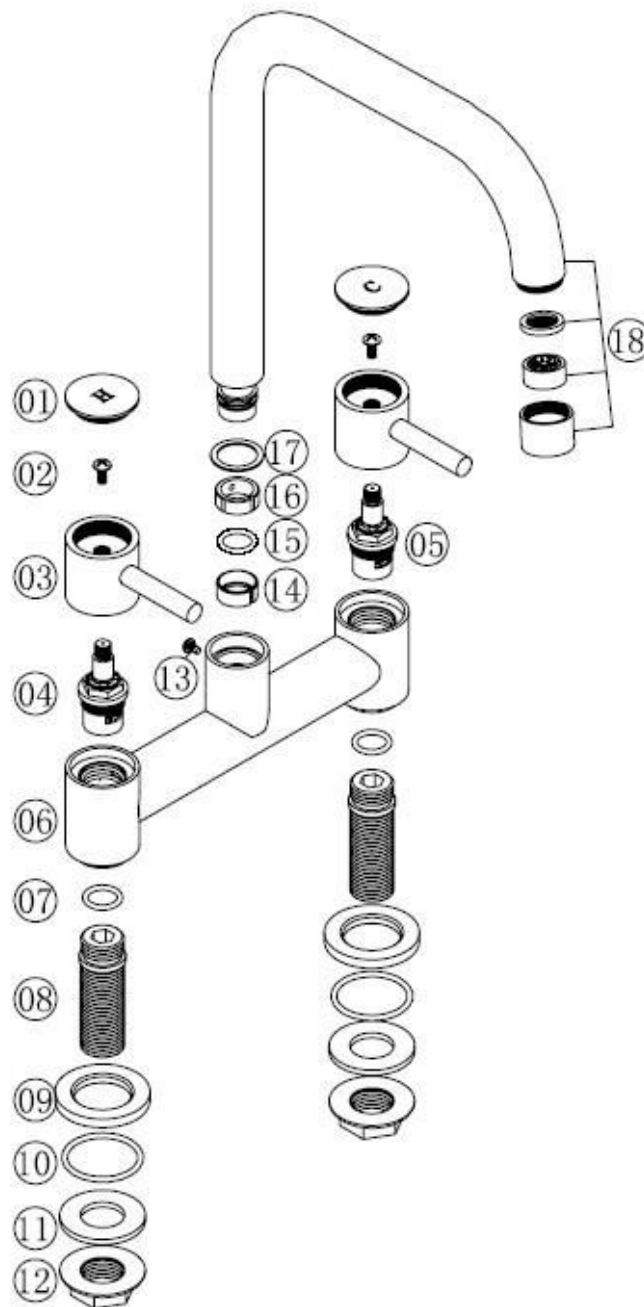
Useful Information	
Minimum operating pressure	0.1 bar
Maximum operating pressure	5 bar
Guarantee length	5 years



Technical Diagram



Exploded Diagram



Item Number	Suppliers Identification code	Item Description	Qty	Price (If purchased as a spare part)
1	H32C-03	Handle Cover	2	Yes
2	SC4-10S	Screw	2	Yes
3	H32-H-Z	Handle Seat	2	Yes
4	VS01-C24	1/2" CD Valve	1	Yes
5	VS01-C24	1/2" CD Valve	1	Yes
6	M3204-01	Tap Body	1	No
7	OR016	O Ring	2	No
8	N15-E-NP	Inlet Leg	2	No
9	M3204-03-B	Flange	2	Yes

10	OR059	O ring	2	Yes
11	N08	Washer	2	Yes
12	N01-C	1/2" Back Nut	2	Yes
13	SC4-7.5S	Screw	1	Yes
14	M3204-02-01	Sleeve	1	Yes
15	OR136	O Ring	1	Yes
16	M9004-02-02	Block Ring	1	Yes
17	M9004-02-03	Washer	1	Yes
18	M3204-02S	Spout	1	

Flow Rates

FAQ

What should I do if my tap is dripping/leaking?

Cleaning the valve (if water dripping from tap)

Before carrying out any maintenance, turn off the mains water supply. If unsure contact a qualified tradesman.

1. Remove the cap, grub screw and handles.
2. Remove the valve using a suitable spanner, clean thoroughly under cold water to remove any build up of limescale or debris.
3. If necessary replace the valve.
4. Replace the valve into the body, tighten the valve using a suitable spanner.
5. Replace the handles, tighten the grub screw and re-fit cap to handles.

What does the Guarantee Cover?

The Guarantee Covering leakage, manufacturing defects and Chrome plating.

The guarantee does not cover:

- Damage or defects caused by:
 - general wear and tear (including special non-chrome finishes; components such as filters, seals, 'O'rings and washers)
 - incorrect installation
 - repair using non- PPI parts
 - accidental or wilful misuse
 - corrosion and the use of inappropriate cleaning products.
 - system debris including the build up of limescale (which can be controlled

- through regular servicing and maintenance).
- Compensation for loss of use of the product or consequential loss of any kind.