

Wickes

USER MANUAL WET 'N' DRY VACUUM & BLOWER



#215735

CONTENTS

INTRODUCTION	2
GENERAL SAFETY INSTRUCTIONS	2
ADDITIONAL SAFETY INSTRUCTIONS	3
IDENTIFICATION OF PARTS	3
ASSEMBLY INSTRUCTIONS	4
DRY VACUUM OPERATION	5
WET VACUUM OPERATION	6
BLOWING OPERATION	7
ELECTRICAL CONNECTION	7
MAINTENANCE & STORAGE	8
TROUBLESHOOTING	8
GUARANTEE	9
ENVIRONMENTAL PROTECTION	9
DECLARATION OF CONFORMITY	10

INTRODUCTION

Thank you for selecting this wet & dry vacuum cleaner. This cleaner is made from high quality materials and requires minimal assembly.

This is a multi-functional appliance. It will pick up all kinds of dry material such as brick dust, nails, broken glass, leaves, litter, wood shavings etc. This vacuum will also suck up liquids and can help unblock sinks. With its blow mode you are able to collect leaves, dust out workshops and garages.

This manual provides you with valuable information in order to get the best performance from your new appliance. Please read and follow the instructions provided before operating.

If properly cared for and maintained, your appliance will give you many years of trouble free operation.

Please retain these instructions for future reference.

GENERAL SAFETY INSTRUCTIONS

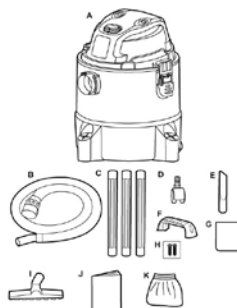
1. Do NOT connect to any AC socket outlet that is damaged.
2. Do NOT use in any of the following locations:
 - a. next to a source of fire,
 - b. an area where oil is likely to splash,
 - c. an area exposed to direct sunlight, or
 - d. an area of very high moisture.
3. To avoid electric shock, do not use in rain and store inside.
4. Never insert your finger or any foreign objects into the air inlet/outlet.
5. Always unplug before cleaning or maintaining the unit.
6. Do NOT cover the unit when in use.
7. If the supply cable of the appliance becomes damaged, stop using immediately. It must be replaced by a qualified engineer.
8. This appliance is fitted with an approved BS1363 13A 3 pin plug and a BS1362 13A fuse. In the event of it requiring replacement, ensure that an equivalent rated and approved component is used.
9. Do NOT modify the cleaner in any way. This may make the cleaner dangerous and will invalidate the guarantee.
10. Only use the appliance for its intended purpose as detailed in these instructions.

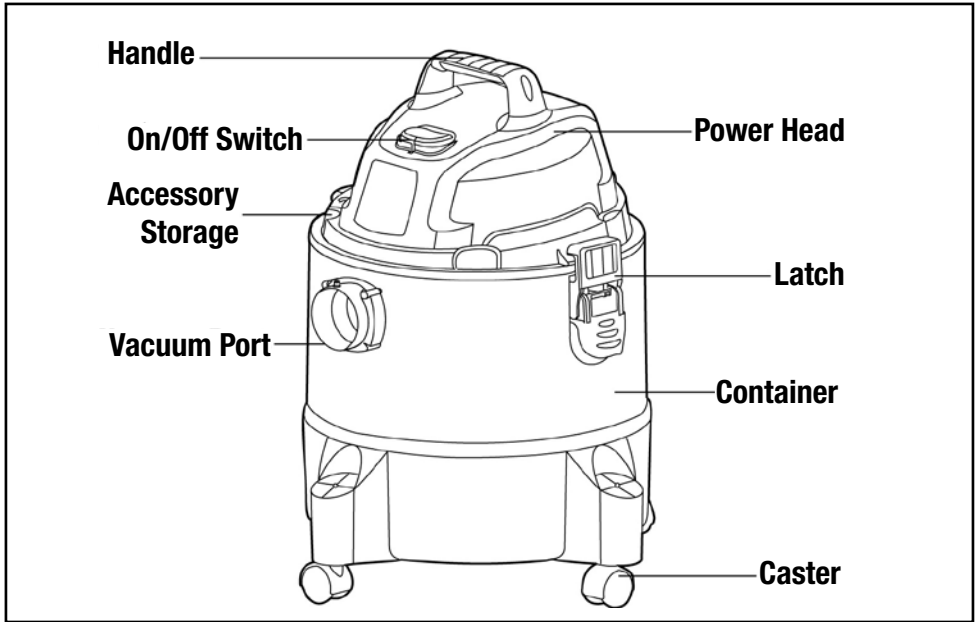
ADDITIONAL SAFETY INSTRUCTIONS

1. Only use attachments provided.
2. Do NOT fully cover the air inlet/outlet while in use.
3. Do NOT vacuum the following:
 - a. substances that are hazardous to health e.g. asbestos,
 - b. hot, burning or smouldering charcoal or ash,
 - c. explosive, volatile, inflammable or combustible liquids e.g. petrol or white spirit, or
 - d. explosive dust e.g. grain or coal.
4. Ensure correct filter is always used.
5. This appliance can be used by children aged from 8 years and above and persons with reduced physical, sensory or mental capabilities or lack of experience and knowledge if they have been given supervision or instruction concerning use of the appliance in a safe way and understand the hazards involved. Children shall not play with the appliance. Cleaning and user maintenance shall not be made by children without supervision.
6. Do NOT let any person sit on the unit.
7. Do NOT pull along by the supply cord.
8. Do NOT attempt to remove any part of the motor casing unless authorized by an authorized technician.
9. Remove the plug from the socket if the unit is not being used for a long periods.
10. Use only the correct power supply – 230V~50HZ
11. Do NOT operate the unit with damaged plug or loose socket point.
12. If you notice liquids leaking from your appliance, switch it off immediately and unplug it.

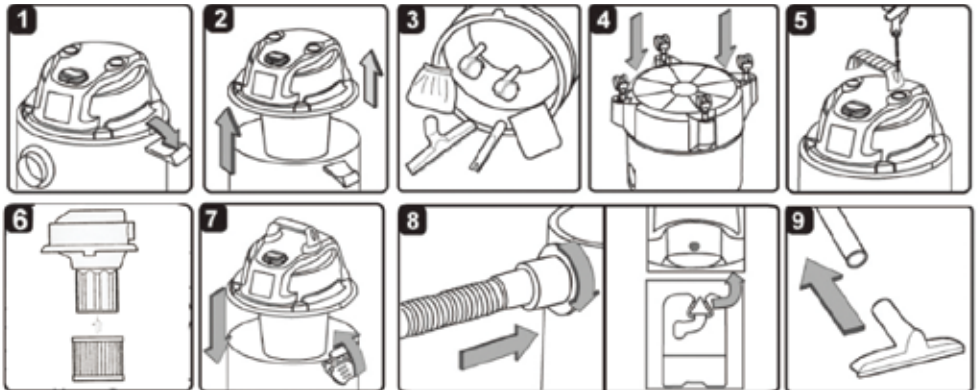
IDENTIFICATION OF PARTS

- A. Vacuum Assembly
- B. Hose
- C. Extension Pipes
- D. Casters
- E. Crevice Tool
- F. Handle
- G. Foam Filter
- H. Handle Screws
- I. Floor Brush
- J. User Manual
- K. Dust Filter





ASSEMBLY INSTRUCTIONS

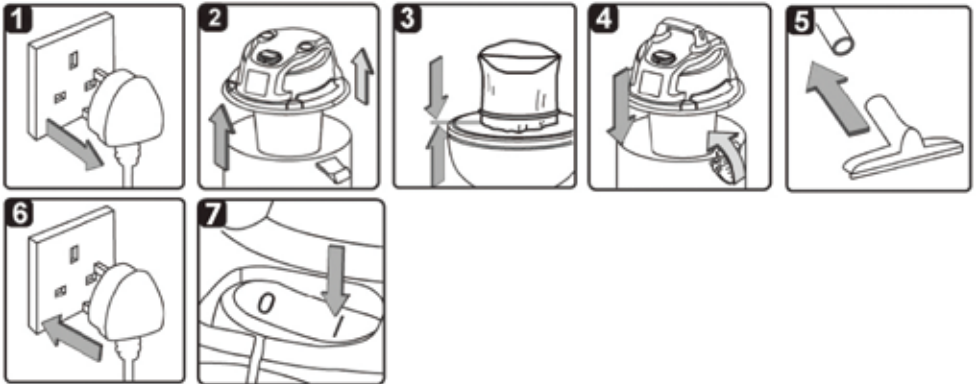


1. Unclamp latches.
2. Lift the power head off the container.
3. Remove the contents from inside the container, check to make sure you have all the listed parts.
4. Insert the casters into their sockets onto the underside of the container and apply pressure until the casters snap into place.
5. Insert the handle into the slots located on the top of the power head and secure it with the 2 screws provided. Do not over tighten.
6. Attach filter (not required for blowing), see dry or wet operation for correct use of filter.
7. Place the power head back onto the container, secure into place by clamping shut the latches.
8. Insert the locking end of the hose (marked with an arrow) into the relevant port of the vacuum and turn to lock into place.
9. The extension pipes and attachments can be pushed onto the hose when required.

DRY VACUUM OPERATION

IMPORTANT!

BEFORE COMMENCING PLEASE ENSURE YOU HAVE READ AND UNDERSTOOD ALL THE SAFETY INSTRUCTION.

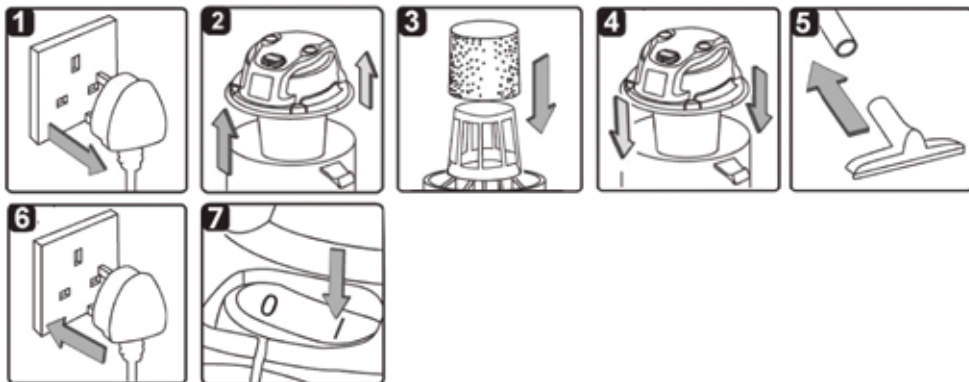


1. Verify that the power cord is disconnected from the power outlet.
2. Remove the power head from the container as shown in the assembly instructions.
3. **Fit the filters to the underside of the power head. Fit the wet foam filter first and fit the dry filter on top of this. Take care not to damage the filters.**
4. Replace the power head onto the container as shown in the assembly instructions.
5. Select the most appropriate attachment for the task you wish to perform.
6. Connect the power cord to a suitable power outlet.
7. Switch on the vacuum and proceed to clean. (I=ON)
8. Switch off the vacuum before emptying. (O=OFF)
9. When emptying the container take care as this may be heavier than you think.
10. Clean filters and change if necessary.

WET VACUUM OPERATION

IMPORTANT!

BEFORE COMMENCING PLEASE ENSURE YOU HAVE READ AND UNDERSTOOD ALL THE SAFETY INSTRUCTIONS.



1. Verify that the power cord is disconnected from the power outlet.
2. Remove the power head from the container as shown in the assembly instructions.
3. Fit the wet foam filter to the underside of the power head; take care not to damage the filter. If this filter has been used in conjunction with the dry filter previously then clean any build up of dust before fitting. The filter can be cleaned using warm soapy water.
4. Replace the power head onto the container as shown in the assembly instructions.
5. Select the most appropriate attachment for the task you wish to perform.
6. Connect the power cord to a suitable power outlet.
7. Switch on the vacuum and proceed to clean. (I=ON)
8. Switch off the vacuum before emptying. (O=OFF)
9. When emptying the container take care as this may be heavier than you think.
10. Clean filters and change if necessary.

IMPORTANT!

When vacuuming large quantities of liquids, do not immerse the nozzle completely in the liquid; leave a gap at the tip of the nozzle opening to allow air inflow. The machine is fitted with a float valve that stops the suction action when the container reaches its maximum capacity. You will notice an increase in motor speed. When this happens, turn off the machine, disconnect from power supply, and empty the liquid into a suitable receptacle or drain. To continue vacuuming, refit the power head to the container. After wet vacuuming, turn the machine off

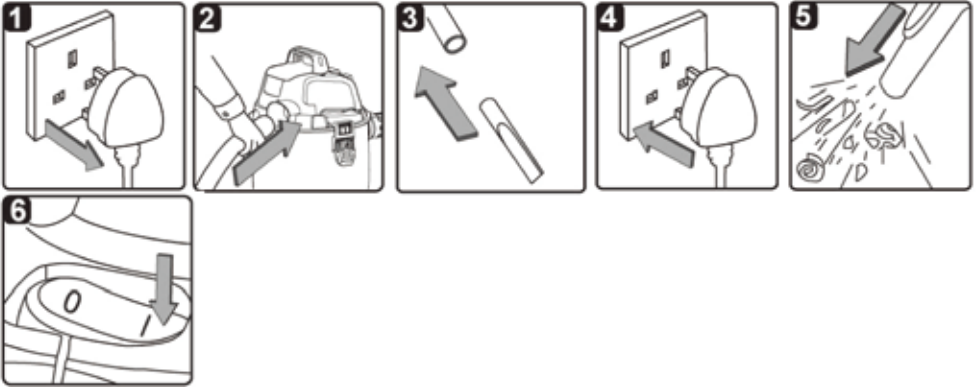
and remove plug from power supply. To prevent the machine becoming mouldy, empty the container, clean and dry the inside and outside of the container and remove the foam filter and allow to air dry before storage.

The float valve is a safety feature. Do not attempt to remove or modify this in any way. If the cleaner should overturn during wet operation switch off immediately and return it to an upright position. Wait for the valve to reset before commencing cleaning.

BLOWING OPERATION

IMPORTANT!

Before commencing please ensure you have read and understood all the safety instructions.



1. Verify that the power cord is disconnected from the power outlet. No filter is required for blowing operations. Ensure that the container is completely empty before commencing.
2. Remove the hose from the vacuum port and place onto the side which shows blow. Lock into place.
3. Select the most appropriate attachment for the task you wish to perform.
4. Connect the power cord to a suitable power outlet.
5. Before switching on, make sure you have a firm hold of the hose end.
6. Switch on the vacuum and proceed to clean. (I=ON)
7. If blowing out dusty environments, wear a suitable dust mask.
8. Protect eyes with suitable safety goggles and ensure no one else is nearby when operating.

ELECTRICAL CONNECTION

This is a double insulated, class II appliance and as such requires no earth connection.
If the supply cord becomes damaged, it must be replaced by a qualified electrician to avoid a hazard.

The cleaner comes with an approved moulded 13 amp BS 1363 plug.
If this should become damaged, replace immediately with an equivalent approved rated plug. Make sure that the damaged plug is discarded and do not reuse.

MAINTENANCE & STORAGE

Remove the plug from the power outlet before commencing any maintenance.

After wet vacuuming, always empty, rinse and dry the container, hose and attachments. If vacuuming sticky spills, clean the tank and attachments with warm soapy water.

The dry filter can be cleaned using soapy water. Rinse and air dry for at least 24 hours. Take care when cleaning as small wood, metal or glass particles could get trapped in this filter. Check airways on hose and attachments to ensure there are no blockages.

The wet filter can be cleaned using warm soapy

water. Dry naturally.

Never use chemical cleaners or an abrasive cloth to clean the vacuum, use a mild detergent and warm water. Dry with a soft dry cloth.

Do not oil the motor.

There are no serviceable parts inside this cleaner other than the filters provided.

Any attempt to service the motor will void the guarantee.

Store in a dry place.

TROUBLESHOOTING

Symptom	Cause	Solution
The cleaner does not work	<ul style="list-style-type: none"> - No power - Functional Fault - Fuse 	<ul style="list-style-type: none"> - Check power supply - Have checked by a qualified person - Replace fuse, always use a BS1362 fuse of the same rating
High pitched noise	<ul style="list-style-type: none"> - Container is full - Hose is blocked 	<ul style="list-style-type: none"> - Empty container - Remove blockage
Dust escaping	<ul style="list-style-type: none"> - Dust filter is damaged or missing - incorrect filters fitted 	<ul style="list-style-type: none"> - Replace dust filter - Ensure correct filters are fitted for specific use
Low suction power	<ul style="list-style-type: none"> - Dust filter is full - Container inlet or hose blocked 	<ul style="list-style-type: none"> - Clean or replace dust filter - Remove blockage

GUARANTEE

1. Subject to paragraph 2, the wet & dry vacuum & blower is guaranteed for a period of 1 year from date of purchase, against manufacturing defects.
2. Wickes must receive a claim under this guarantee no later than 1 year from date of purchase.

The following are excluded from this guarantee:

- product has undergone modification to its original specification and build,
- loss of product and other compensation,
- defects arising from the use of this product other than in accordance with the enclosed instructions or from mistreatment or improper use,
- parts suffering from wear and tear,
- accidental damage, or
- repair or attempted repair by an unauthorised repairer.

A claim must be made by delivering the cleaner to a Wickes store, together with the proof of purchase.

A replacement product is treated as a new product for the purposes of paragraph 1.

Repair to a product does not extend the duration of the guarantee.

3. Claims will be investigated and accepted or rejected as soon as practicable. Accepted claims will be dealt with as follows:
Claims received within 1 year with the proof of purchase. Wickes will exchange with a product of equivalent specification or refund at our option.
4. This guarantee is in addition to and does not affect your statutory rights. If a fault occurs with this product please call our Customer Service number for assistance: Tel: 01604 663 607

ENVIRONMENTAL PROTECTION

Disposal of waste electrical and electronic equipment(WEEE).



When your vacuum cleaner comes to the end of its life or you choose to update or upgrade it by replacing it, please do not dispose of it with your normal household waste, please recycle where facilities exist. When you need to dispose of this fitting, check with your retailer or local authority for suitable options. Regulations encourage the recycling of Waste from Electrical and Electronic Equipment (European "WEEE Directive" effective August 2005).

DECLARATION OF CONFORMITY

We,

Wickes Building Supplies Limited

Declare that this product:

215735 - VQ1220P – Wet & Dry Vacuum Cleaner

Complies with the following Directives and Regulations:

Electrical Equipment (Safety) Regulations 2016

Electromagnetic Compatibility Regulations 2016

The Restriction of the Use of Certain Hazardous Substances in Electrical and Electronic Equipment Regulations 2012

UK REACH (Registration, Evaluation, Authorisation & restriction of Chemicals)

and conforms to the following standards:

Standards specific to this product:

BS EN 60335-1

BS EN 60335-2-2

BS EN 62233

BS EN 55014-1

BS EN 55014-2

BS EN IEC 61000-3-2

BS EN 61000-3-3



1st January 2021

Philip Ansell

Category Technical Manager

Wickes

Vision House

19 Colonial Way

Watford

WD24 4JL