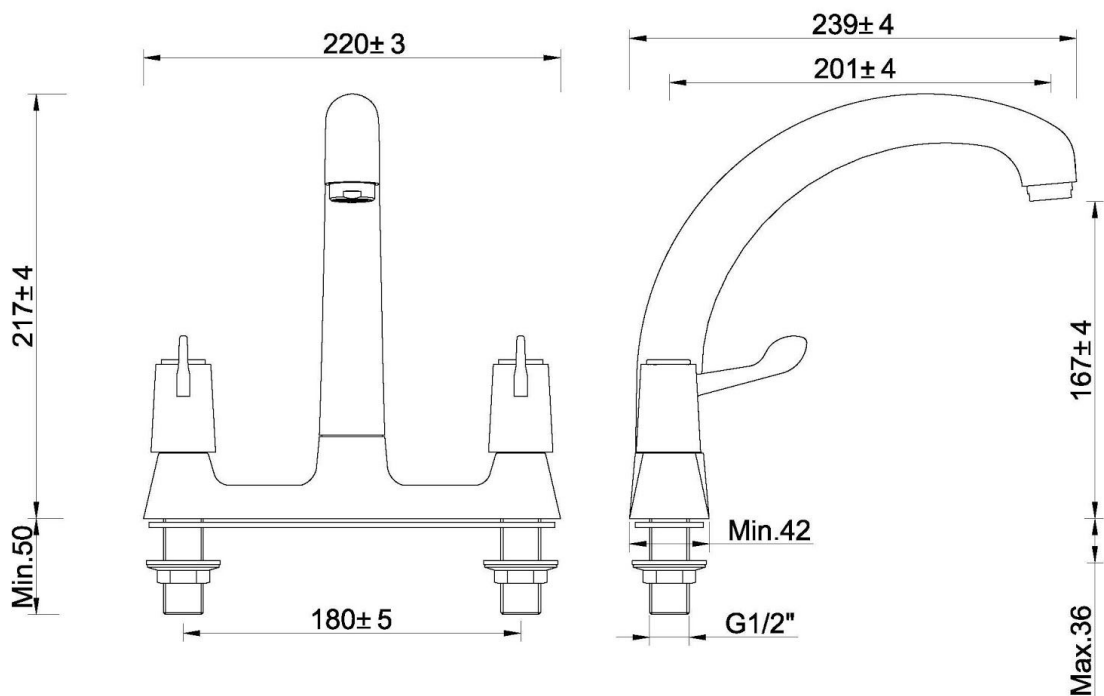


# 410715-Modena Deck mixer

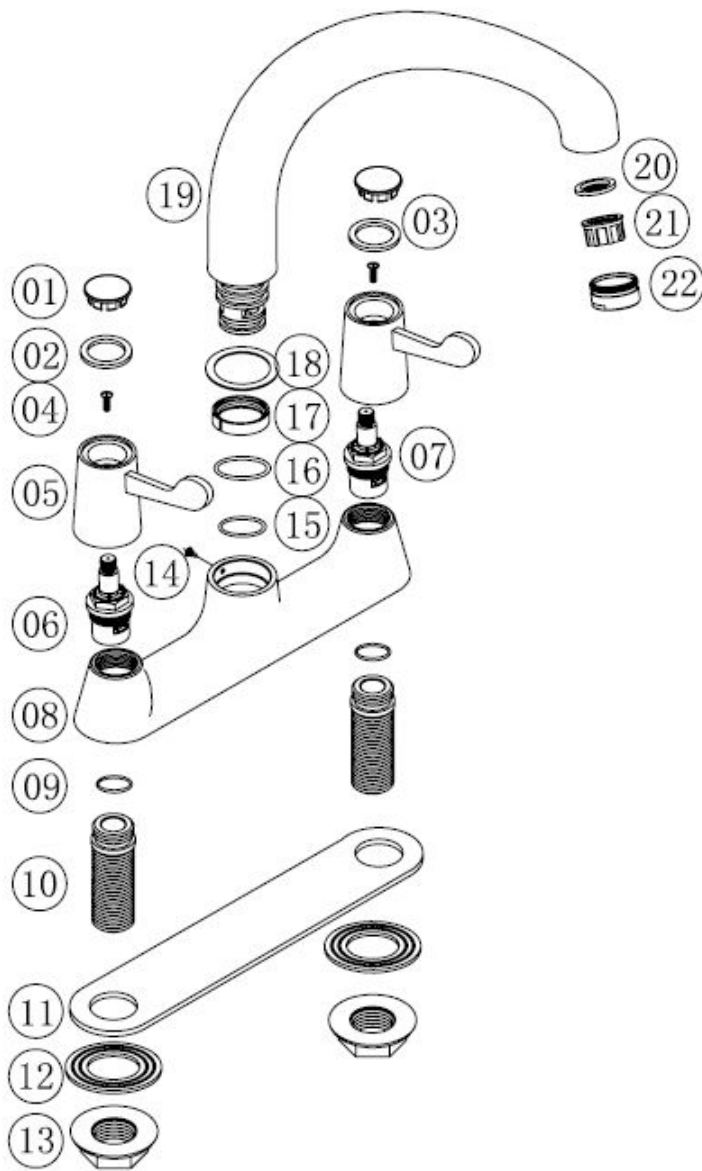
Useful Information	
Minimum operating pressure	0.1 bar
Maximum operating pressure	5 bar
Guarantee length	2 years



## Technical Diagram



ExplodedDiagram



Item Number	Supplier Ref	Item Description	Quantity	Material	Spares Available
1	P51-D	Indice	2	ABS	Yes
2	P51-B H	Indice Seat	1	PE	Yes
3	P51-B C	Indice Seat	1	PE	Yes
4	SC4-12S/L	Screw	2	Stainless Steel	Yes
5	H51-E	Handle	2	ZINC	Yes
6	VS01-C20	1/2" CD Valve	1	BRASS+EPDM+Ceramic Disc	Yes
7	VS01-C20	1/2" CD Valve	1	BRASS+EPDM+Ceramic Disc	Yes
8	M0112-01	Tap Body	1	BRASS	No
9	OR016	O Ring	2	EPDM	No
10	N15-G NP	Inlet Leg	2	BRASS	No
11	N12-B	Washer	1	EVA	Yes
12	N08	Washer	2	NBR	Yes
13	N01-C	1/2" Back Nut	2	ZINC	Yes
14	SC4-7.5S	Screw	1	Stainless Steel	Yes

15	OR014	O ring	1	EPDM	Yes
16	OR015	O Ring	1	EPDM	Yes
17	M33247-N1	Block Ring	1	POM	Yes
18	M0112-02-01	Washer	1	POM	Yes
19	167020-02	Spout	1	BRASS	No
20	A13-04X	Washer	1	EPDM+Stainless Steel	Yes
21	A13-02	Flow straightener	1	POM	Yes
22	A14-04	Flow straightener Shell	1	ABS	Yes

## Flow Rates

## FAQ

### **What should I do if my tap is dripping/leaking?**

Cleaning the valve (if water dripping from tap)

Before carrying out any maintenance, turn off the mains water supply. If unsure contact a qualified tradesman.

1. Remove the cap, grub screw and handles.
2. Remove the valve using a suitable spanner, clean thoroughly under cold water to remove any build up of limescale or debris.
3. If necessary replace the valve.
4. Replace the valve into the body, tighten the valve using a suitable spanner.
5. Replace the handles and indices, tighten the grub screw and re-fit cap to handles.

### **What does the Guarantee Cover?**

The Guarantee Covering leakage, manufacturing defects and Chrome plating

The guarantee does not cover:

- Damage or defects caused by:
  - general wear and tear (including special non-chrome finishes; components such as filters, seals, 'O'rings and washers)
  - incorrect installation
  - repair using non- PPI parts
  - accidental or wilful misuse
  - corrosion and the use of inappropriate cleaning products.
  - system debris including the build up of limescale (which can be controlled through regular servicing and maintenance).
- Compensation for loss of use of the product or consequential loss of any kind.