



# Product Technical Sheet



## I. General

Product Description	Wickes Tube Cutter 3-30mm
SKU	500528
Brand	Wickes
Product image	<div>PRODUCT IMAGE</div>



# Product Technical Sheet



## II. Reference data

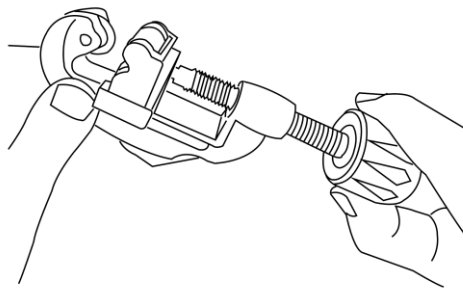
<b>Specification</b>	<p>Designed for cutting copper, aluminum, and thin-walled steel pipes with diameters from 3 to 30mm, this tool features a hardened and tempered cutting wheel, along with a spare cutting wheel housed within the handle knob.</p>
<b>Features and Benefits</b>	<ul style="list-style-type: none"><li>-Quick and easy way to get clean rounded cuts;</li><li>-Made of high-quality Zinc Alloy, which is enduring and resistant to corrosion and rust, safe and long lasting;</li><li>-Adjustable cutting depth designed for fast and safe cutting.;</li><li>-Spare cutting wheel stored in handle;</li><li>-The tube cutter also includes a retractable (fold-away) reamer to clean burrs left after cutting;</li><li>-A hardened and tempered cutting wheel made of high-quality bearing steel.</li></ul>
<b>Application</b>	<ul style="list-style-type: none"><li>-Ranging from 3 to 30mm;</li><li>-Easily cutting copper, aluminum, thin-walled steel pipes;</li><li>-Cuts pipes with wall thickness up to 2 mm;</li><li>-Suitable for cutting water pipes, gas lines, oil pipes.</li></ul>

## III. Instructions & Note

### -Instructions-

#### STEP 1

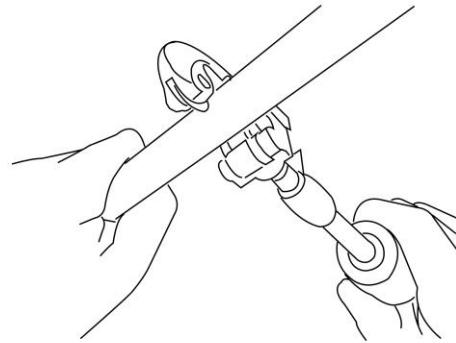
Turn the knob to release the cutting wheel.



#### STEP 2

Put the tube into the cutter and turn the knob clockwise to clamp the tube.

**Note:make sure the knob is tight.**

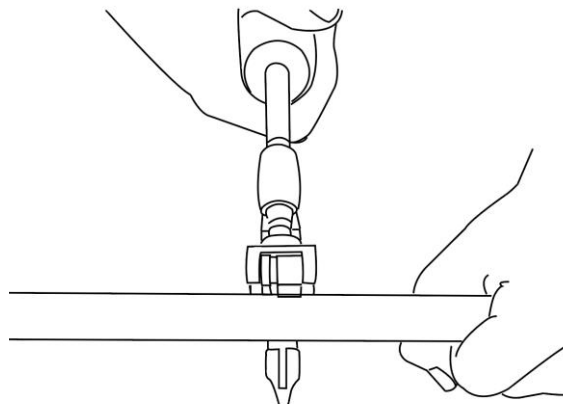


### STEPS

#### STEP 3

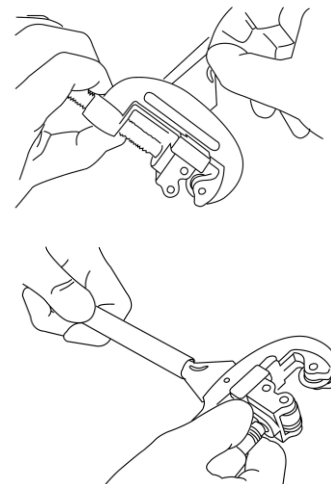
When cutting, hold the pipe with one hand and turn the pipe cutter with the other hand. Every 4 times, check the knob tightness and tighten the knob. Repeat the above operation until the pipe is cut.

**Note:make sure the knob is tight.**



#### STEP 4

After cutting, pull out the side trimming knife, put it into the mouth of the tube and rotate it to trim the remaining burrs.



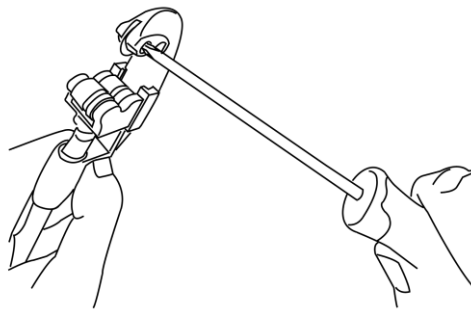
## -Cutting wheel replacement-

### STEPS

#### STEP 1

Remove the blade by turning the screw counterclockwise.

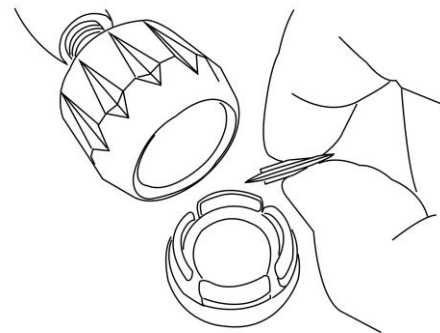
**Note:** Do not touch the edge of the blade, or you might cut your finger. Grasp the base of the cutting wheel.



#### STEP 2

Open knob cover and remove replacement blade.

**Note:** Do not touch the edge of the blade, or you might cut your finger. Grasp the base of the cutting wheel.



#### STEP 3

Align the center hole of the new cutting wheel with the support hole and place it into the wheel part, then turn the screwdriver clockwise to tighten.

**Note:** Do not touch the edge of the blade, or you might cut your finger. Grasp the base of the cutting wheel.

